



RESEARCH ARTICLE

Devonian–Mississippian magmatism related to extensional collapse in Svalbard: implications for radiating dyke swarms

[version 1; peer review: 2 approved]

Jean-Baptiste P. Koehl ^{1,2}, Sebastian Tappe³, Gillian R. Foulger⁴, Ingrid M. Anell²¹Earth and Planetary Sciences, McGill University Faculty of Science, Montreal, Québec, H3A 0E8, Canada²Geosciences, Universitetet i Oslo Institutt for geofag, Oslo, Oslo, 0371, Norway³Geosciences, UiT The Arctic University of Norway, Tromsø, Troms, 9037, Norway⁴Earth Sciences, Durham University Department of Earth Sciences, Durham, England, DH1 3LE, UK

V1 First published: 12 Dec 2024, 4:262
<https://doi.org/10.12688/openreseurope.18798.1>

Latest published: 12 Dec 2024, 4:262
<https://doi.org/10.12688/openreseurope.18798.1>

Abstract

Background

Despite extensive studies of the Mesozoic–Cenozoic magmatic history of Svalbard, little has been done on the Paleozoic magmatism due to fewer available outcrops.

Methods

2D seismic reflection data were used to study magmatic intrusions in the subsurface of eastern Svalbard.

Results

This work presents seismic evidence for west-dipping, Middle Devonian–Mississippian sills in eastern Spitsbergen, Svalbard. The sills crosscut a late Neoproterozoic Timanian thrust system, which was reworked during Caledonian contraction. The sills are unconformably overlain by relatively undeformed Pennsylvanian–Mesozoic sedimentary rocks and crosscut by Cretaceous dykes of the High Arctic Large Igneous Province. The sills probably intruded along extensional fractures during post-Caledonian reactivation–overprinting of the late Neoproterozoic thrust system. Kimberlitic accessory minerals in exposed contemporaneous intrusions and the chemical composition of chromium spinel grains in Upper Triassic sedimentary rocks in Svalbard suggest that the Middle Devonian–Mississippian intrusions in eastern Spitsbergen show affinities with diamond-rich kimberlites in northwestern Russia.

Open Peer Review

Approval Status

	1	2
version 1 12 Dec 2024	 view	 view

1. **Natasha Stanton** , University of Rio de Janeiro State, Rio de Janeiro, Brazil
2. **Alexei Ivanov**, Russian Academy of Sciences, Moscow, Russian Federation

Any reports and responses or comments on the article can be found at the end of the article.

Overall, the sills were emplaced during a regional episode of extension-related Devonian–Carboniferous magmatism in the Northern Hemisphere including the Kola–Dnieper and Yakutsk–Vilyui large igneous provinces.

Conclusions

This work presents the first evidence for extensive Middle Devonian–Mississippian magmatism in Svalbard. These intrusions may be part of the Kola–Dnieper Large Igneous Province and intruded parallel to preexisting, Proterozoic–early Paleozoic orogenic structures. Their strike is inconsistent with a source from a potential mantle plume center in the eastern Barents Sea. Thus, the radiating emplacement pattern of the magmatic intrusions of the Kola–Dnieper Large Igneous Province are not the product of plume-related uplift but of structural inheritance. A similar line of reasoning is successfully applied to intrusions of the Yakutsk–Vilyui and High Arctic large igneous provinces.

Plain language summary

The study presents the first evidence for extensive magmatism in Svalbard in the late Paleozoic at ca. 390–330 Ma. The composition of the magmatic intrusions suggests they are part of a large magmatic province extending thousands of km from Ukraine in the south to the Ural Mountains in the northeast and Svalbard in the northwest. The magmatic rocks intruded along existing tectonic structures formed at ca. 650–550 Ma during the collision of two tectonic plates. This work documents the impact of preexisting structures on subsequent magmatic events, especially in determining preferential pathways for magma in the crust. A similar reasoning can be applied to other contemporaneous groups of intrusions in Russia and to nearby younger intrusions in the Arctic (Yakutsk–Vilyui Large Igneous Province and High Arctic Large Igneous Province), which appear to follow structures related to old plate-collision events. Thus, the apparently radiating pattern displayed by those groups of intrusions is generated by previous episodes of deformation of the crust rather than by uplift and fracturing of the crust around potential mantle plumes, which are focus points of upwelling of magma from the deep Earth interior at the core–mantle boundary.

Keywords

Svalbard, Devonian, Mississippian, Cretaceous, Paleoproterozoic, Neoproterozoic, large igneous province, radiating dyke swarm, Kola–Dnieper Large Igneous Province, Yakutsk–Vilyui Large Igneous Province, High Arctic Large Igneous Province, Timanian Orogen, Caledonian Orogen, inheritance, post-orogenic collapse

Corresponding author: Jean-Baptiste P. Koehl (jeanbaptiste.koehl@gmail.com)

Author roles: **Koehl JBP:** Conceptualization, Data Curation, Formal Analysis, Funding Acquisition, Investigation, Methodology, Project Administration, Resources, Validation, Visualization, Writing – Original Draft Preparation, Writing – Review & Editing; **Tappe S:** Formal Analysis, Investigation, Validation, Writing – Original Draft Preparation, Writing – Review & Editing; **Foulger GR:** Formal Analysis, Investigation, Validation, Writing – Original Draft Preparation, Writing – Review & Editing; **Anell IM:** Validation, Writing – Original Draft Preparation, Writing – Review & Editing

Competing interests: No competing interests were disclosed.

Grant information: This project has received funding from the European Union's Horizon 2020 research and innovation program under the Marie Skłodowska-Curie grant agreement No (101023439).

Copyright: © 2024 Koehl JBP *et al.* This is an open access article distributed under the terms of the [Creative Commons Attribution License](#), which permits unrestricted use, distribution, and reproduction in any medium, provided the original work is properly cited.

How to cite this article: Koehl JBP, Tappe S, Foulger GR and Anell IM. **Devonian–Mississippian magmatism related to extensional collapse in Svalbard: implications for radiating dyke swarms [version 1; peer review: 2 approved]** Open Research Europe 2024, 4:262 <https://doi.org/10.12688/openreseurope.18798.1>

First published: 12 Dec 2024, 4:262 <https://doi.org/10.12688/openreseurope.18798.1>

Introduction

The Devonian–Mississippian was characterized by particularly voluminous magmatism, creating several large igneous provinces (LIPs) in Eurasia including the Altay–Sayan, Yakutsk–Vilyui, and Kola–Dnieper LIPs (Figure 1a). Among these, the Kola–Dnieper LIP is believed to extend from eastern Europe (Pripyat–Dnieper–Donets Rift) to the Barents Sea (Figure 1a). In the Barents Sea, it consists of a broad paleorift and related intrusions located mainly in the Russian sector of the Barents Sea, but also in northern Norway. These follow preexisting, WNW–ESE- to NW–SE-striking, late Neoproterozoic Timanian orogenic structures and NNE–SSW- to NE–SW-striking, early–mid Paleozoic, Caledonian structures (Figure 1b).

Little is known about the western extent of the paleorift and associated Kola–Dnieper LIP. A few studies reported intrusions at Krosspynten, Purpurdalen, and Ekmanfjorden in Svalbard showing affinities with those of the Kola–Dnieper LIP (Evdokimov *et al.*, 2006; Sirotkin *et al.*, 2012; Figure 1a–c). Similarities included evidence of kimberlitic accessory minerals such as pyrope, chromium diopside, moissanite, and chromium spinel xenocrysts (Evdokimov *et al.*, 2006).

Svalbard’s Mesozoic–Cenozoic magmatic history is relatively well constrained, and includes extensive Cretaceous dolerite dykes and sills associated with the High Arctic Large Igneous Province (HALIP; Birkenmajer & Morawski, 1960; Birkenmajer *et al.*, 2010; Burov *et al.*, 1977; Corfu *et al.*, 2013; Foulger *et al.*, 2024; Grogan *et al.*, 2000; Maher, 2001; Nejbart *et al.*, 2011; Parker, 1966; Senger *et al.*, 2013; Senger *et al.*, 2014). The Cenozoic was marked by the emplacement of Miocene tholeiitic basalts and Pleistocene alkali basalts, which occur respectively in northern and northwestern Spitsbergen as lava flows and plugs (Amundsen *et al.*, 1987; Burov, 1965; Gjelsvik, 1963; Griffin *et al.*, 2012; Hansen *et al.*, 2003; Senger *et al.*, 2023; Skjelkvåle *et al.*, 1989).

By contrast, the magmatic history of Svalbard during the Paleozoic is only poorly understood and includes the kimberlitic to lamprophyric intrusions at Krosspynten, Purpurdalen, and Ekmanfjorden (Evdokimov *et al.*, 2006; Sirotkin *et al.*, 2012; Figure 1c), and a few intrusions in southern Spitsbergen (Birkenmajer *et al.*, 2010). Fieldwork in northern Nordaustlandet in 2023 also revealed such rare lamprophyric dyke intrusives. A major challenge is the lack of suitable outcrops and the apparent scarcity of Paleozoic intrusions above sea level.

Late Paleozoic intrusions were reported in subsurface seismic reflection data in Nordmannsfunna in eastern Spitsbergen by Koehl *et al.* (2022a; Figure 1c–d) and more detailed results and analysis of these is presented herein. The study explores possible relationships of the intrusions to the geochemical signatures of minerals in Upper Triassic sedimentary rocks, and to those of coeval, kimberlitic and lamprophyric magmatic systems in other Arctic areas, including the Devonian–Mississippian Yakutsk–Vilyui (Courtilot *et al.*, 2010; Hamilton *et al.*, 2004;

Powerman *et al.*, 2013; Ricci *et al.*, 2013; Tretiakova *et al.*, 2017) and Kola–Dnieper LIPs in northern Russia and eastern Europe (Larionova *et al.*, 2016; Puchkov *et al.*, 2016; Terekhov *et al.*, 2012).

The findings have implications for the tectono-magmatic history of Arctic regions including their mineral exploration potential, as well as for the geometry and extent of Devonian–Mississippian LIPs. This study shows that magmatism emplaced contemporaneously with flood basalts may extend great distances from the main LIP. Those distant magmas were sourced locally and their crustal paths mainly controlled by pre-existing lithospheric structures.

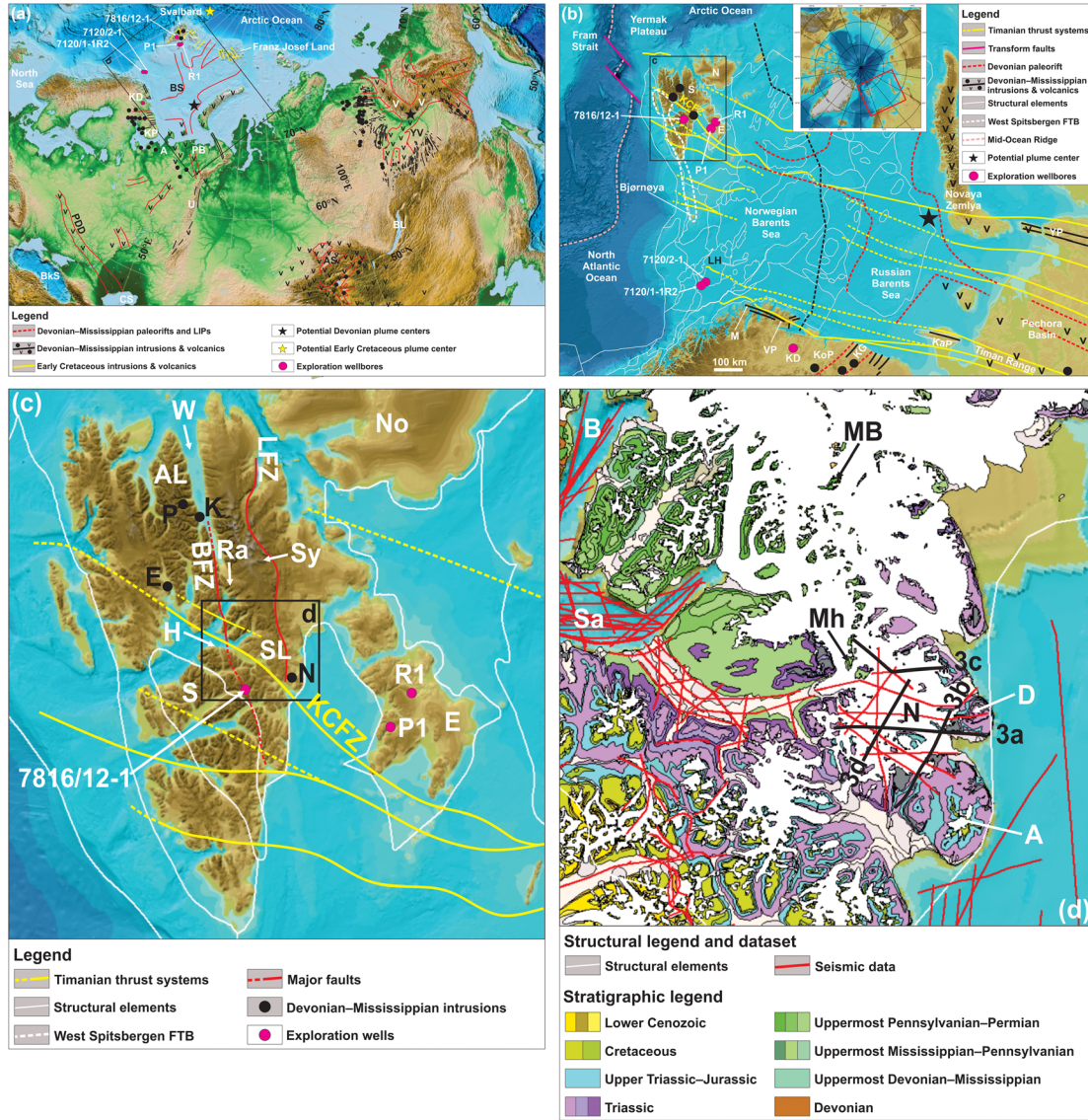
Geological setting

Pre-Devonian deformation of basement rocks at Nordmannsfunna in Svalbard

In Nordmannsfunna (see Figure 1c–d for location), seismic reflection data show that basement rocks are deformed into a major, north- to NNE-plunging antiform, which has been interpreted as a Timanian thrust fault that was folded during the Caledonian Orogeny (Koehl *et al.*, 2022a). The antiform is unconformably overlain by Pennsylvanian–Mesozoic sedimentary strata and offset by the Agardhbukta Fault. The latter is a probable segment of the Lomfjorden Fault Zone (Andresen *et al.*, 1992; Piepjohn *et al.*, 2019), which formed as a Caledonian thrust, was later partly inverted during Devonian–Mississippian late–post-orogenic extension, and mildly reactivated as a Eurekan thrust in the early Cenozoic (Koehl *et al.*, 2022a). Major strike-slip movement along the Lomfjorden Fault Zone is unlikely because of the contiguous nature of Timanian thrust systems across the northwestern Russia, the Barents Sea, and Svalbard, including key examples in Sassenfjorden, Billefjorden, and Nordmannsfunna in central and eastern Spitsbergen (Koehl *et al.*, 2022a; Koehl *et al.*, 2023a; Koehl *et al.*, 2023b; Figure 1c–d).

Devonian–Carboniferous tectonic setting of Svalbard

The Svalbard Archipelago is thought to have had a complex tectonic history in the early Paleozoic up until the Late Devonian when the three basement terranes constituting the archipelago were supposedly accreted during the Caledonian and Svalbardian orogenies along large, N–S-striking fault zones such as the Lomfjorden and Billefjorden fault zones (Harland, 1969; Harland *et al.*, 1974; Harland *et al.*, 1992; Piepjohn, 2000; Figure 1c). However, continuous Timanian (650–550 Ma) thrust systems extending from northwestern Russia to central and southwestern Spitsbergen (Faehrich *et al.*, 2020; Koehl *et al.*, 2022a; Majka *et al.*, 2008) and the western Barents Sea (Koehl *et al.*, 2023c) suggest that the Svalbard Archipelago was already assembled during the late Neoproterozoic. In addition, recent studies suggest that the Late Devonian (–earliest Mississippian?) Svalbardian Orogeny did not occur in Svalbard due to numerous inconsistencies in the structural and paleontological record (Berry & Marshall, 2015; Koehl *et al.*, 2022b; Lindemann *et al.*, 2013; Marshall *et al.*, 2015; Newman *et al.*, 2019;



Newman *et al.*, 2020; Newman *et al.*, 2021; Scheibner *et al.*, 2012). These studies, together with new latest Silurian to latest Devonian geochronological ages for the Keisarhjelm extensional detachment in northwestern Spitsbergen (Braathen *et al.*, 2018), indicate that Svalbard underwent dominantly late–post-Caledonian extensional collapse during the Devonian.

In the latest Devonian, sedimentary rocks of the Billefjorden Group started to deposit during continued extension (Aakvik, 1981; Gjelberg, 1984; McCann & Dallmann, 1996) as suggested by small growth strata in Odellfjellet (Koehl & Muñoz-Barrera, 2018). Extension continued into the Pennsylvanian as indicated by the deposition of hundreds of meters of uppermost Mississippian to lowermost Permian sediments of the Gipsdalen Group in the Billefjorden Trough (Braathen *et al.*, 2011; Cutbill & Challinor, 1965; Gjelberg & Steel, 1981; Pickard *et al.*, 1996; Smyrak-Sikora *et al.*, 2019). It started to decline in the Early–Middle Pennsylvanian (Dallmann, 1993; Koehl & Muñoz-Barrera, 2018; Koehl *et al.*, 2023b; Koehl *et al.*, 2023d).

In the study area, palynological data for rocks of the Malte Brunfjellet Formation yielded a mid–late Early Pennsylvanian age (Scheibner *et al.*, 2015). At Malte Brunfjellet, these rocks overlie unconformably metamorphosed Neoproterozoic basement rocks and are overlain conformably by uppermost Pennsylvanian–earliest Permian carbonate-dominated sedimentary rocks of the Wordiekammen Formation (Dallmann *et al.*, 2009; Dallmann, 2015; Scheibner *et al.*, 2015). Farther south, the latter are overlain conformably by lower Permian rocks of the Gipshuken and Kapp Starostin formations (Andresen *et al.*, 1992; Cutbill & Challinor, 1965; Dallmann *et al.*, 1999; Dallmann *et al.*, 2009; Dallmann, 2015; Haremo & Andresen, 1992).

Devonian–Mississippian magmatism in Siberia, Baltica, and Svalbard

The Devonian–Mississippian was marked by intense magmatism and the formation of LIPs in Siberia and Baltica, the Yakutsk–Vilyui LIP and the Kola–Dnieper LIP respectively (Ernst *et al.*, 2020; Figure 1a). A few related intrusions are also reported from Svalbard (Figure 1a–b), which was part of Baltica from at least the late Neoproterozoic (ca. 650 Ma; Koehl *et al.*, 2022a; Koehl *et al.*, 2023c).

Siberia

Yakutsk–Vilyui LIP

The Yakutsk–Vilyui LIP (Figure 1a) comprises low-magnesium basaltic volcanic and intrusive rocks as well as high-magnesium kimberlites and related rocks. K–Ar, Ar–Ar, Sm–Nd, Lu–Hf, and U–Pb geochronology indicate that the LIP intruded the Siberian Craton during the Late Devonian–Mississippian at 381–338 Ma (Courtilot *et al.*, 2010; Hamilton *et al.*, 2004; Powerman *et al.*, 2013; Ricci *et al.*, 2013; Sun *et al.*, 2014; Sun *et al.*, 2018; Tappe *et al.*, 2018; Tretiakova *et al.*, 2017). The LIP is associated with evaporitic sedimentary basins up to 6 km thick bounded by normal faults with both ENE–WSW and WNW–ESE strikes that formed during extension (Danukalova *et al.*, 2014; Ershova *et al.*, 2014; Polyansky *et al.*, 2013; Polyansky *et al.*, 2017). The LIP has been interpreted to reflect either rift- and plume-related magmatism (Kiselev *et al.*, 2006; Kiselev *et al.*, 2012; Puchkov *et al.*, 2016) or magmatism at an active continental margin (Ivanov, 2015).

Nevertheless, the radiating (triple junction-like) geometry of the dyke swarms and rift basins (Kiselev *et al.*, 2012) have been interpreted as supporting a plume origin.

Altay–Sayan region

The Altay–Sayan region at the southwestern margin of the Siberian Craton (Figure 1a) is characterized by large volumes of gabbroic and granitic intrusions (Predtechensky & Krasnov, 1967; Vorontsov *et al.*, 2013). Magmatism occurred in two episodes during the Early–Middle Devonian (408–393 Ma) and the Late Devonian–Mississippian (Babin *et al.*, 2004; Kuzmin *et al.*, 2010; Malkovets *et al.*, 2003; Predtechensky & Krasnov, 1967; Vorontsov *et al.*, 2021). The geochemical compositions of the intrusive rocks have been variously claimed to be related to plume, subduction, and backarc extensional (Broussolle *et al.*, 2019; Kong *et al.*, 2023; Safonova *et al.*, 2004; Vorontsov *et al.*, 2013). This illustrates the current debate around the current understanding of these magmatic provinces.

Baltica

Kola–Dnieper LIP

Pripyat–Dnieper–Donets Rift

The Pripyat–Dnieper–Donets Rift in eastern Europe is a 2000 kilometers long, WNW–ESE-striking graben or aulacogen that extends from the northeastern edge of the Azov Sea in the southeast to Belarus in the northwest, crosscutting Precambrian rocks of the East European Craton (Chekunov *et al.*, 1992; Stovba *et al.*, 1996; Wilson & Lyashkevich, 1996; Figure 1a). It comprises several basins filled with up to 4 km thick Middle Devonian–Mississippian volcanoclastic and evaporitic successions, such as the Pripyat and Donets troughs (Chekunov *et al.*, 1992; Stephenson *et al.*, 1993; Stovba *et al.*, 1996; Wilson & Lyashkevich, 1996). Ultramafic–mafic rocks such as alkaline basalts dominate the magmatic record and were emplaced both as lava flows, sills, and dykes (Chekunov *et al.*, 1992; Starostenko *et al.*, 2018; Stephenson *et al.*, 1993; Wilson & Lyashkevich, 1996). Interpretations for these magmas include a backarc origin related to the onset of Variscan subduction in central Europe, rifting, and a cluster of mantle plume fingers (Chekunov *et al.*, 1992; Sazonova *et al.*, 2019; Starostenko *et al.*, 2018; Wilson & Lyashkevich, 1996).

Northwestern Russia

In northwestern Russia, Devonian–Mississippian magmatism was widespread and the igneous products are of high economic importance because of the occurrence of critical minerals and diamonds. On the Kola Peninsula, it includes ultramafic-carbonatite complexes of the Kola Alkaline Province (Downes *et al.*, 2005), which intruded Neoproterozoic metasedimentary rocks during the formation of the ENE–WSW-striking Kontozero Graben and associated deposition of lacustrine sediments in the Middle Devonian–Early Mississippian (Kramm *et al.*, 1993). In the Arkhangelsk Alkaline Igneous Province, kimberlites and lamprophyric rocks yielded Late Devonian ages (Kargin *et al.*, 2021; Larionova *et al.*, 2016; Mahotkin *et al.*, 2000).

In the Russian sector of the Barents Sea, Middle Devonian–Mississippian extension resulted in the development of a complex network of basins and highs, some of which can be traced onshore to the Pechora Basin, the Timan Range, the

Kanin Peninsula, and Novaya Zemlya where they display a prominent WNW–ESE strike (Baturin *et al.*, 1991; Klimenko *et al.*, 2011; Lopatin *et al.*, 2001; O’Leary *et al.*, 2004; Pease *et al.*, 2016; Wilson *et al.*, 1999; Figure 1a). Onshore igneous rocks (including those from the Kola super-deep well) comprise dominantly dolerite sills and layered basalts and tuffs of Middle Devonian to Early Mississippian ages (Lopatin *et al.*, 2001; Pease *et al.*, 2016; Wilson *et al.*, 1999).

Possible causes of Devonian–Mississippian rifting and magmatism in northwestern Russia are backarc extension related to far-field effects from subduction in the Urals and/or post-Caledonian extension (Nikishin *et al.*, 1996; O’Leary *et al.*, 2004; Pease *et al.*, 2016; Ziegler, 1988; Zonenshain *et al.*, 1990). A mantle plume has also been proposed (Ernst *et al.*, 2020; Puchkov *et al.*, 2016). Convergence of several Devonian dyke swarms towards a focal point in the Russian sector of the Barents Sea have been cited in support of a mantle plume origin for this LIP-style magmatism (Puchkov *et al.*, 2016).

Northern Norway (‘mainland’)

In northern Norway, Middle Devonian–Mississippian magmatism related to the Kola–Dnieper LIP may include N–S- and NE–SW-striking dolerite dykes on Varanger Peninsula and WNW–ESE-striking in Magerøya and adjacent areas (Figure 1b). These dyke intrusions appear clearly on regional high-resolution magnetic data and coincide with narrow positive anomalies (Koehl *et al.*, 2019; Nasuti *et al.*, 2015). Offshore, they can be traced by high-amplitude seismic reflections (Koehl & Stokmo, 2024). The dolerite dykes in Varanger Peninsula yielded Middle–Late Devonian ages (Guise & Roberts, 2002; Roberts, 2011; Roberts & Walker, 1996; Roberts & Walker, 1997), whereas Mississippian ages were obtained for the

dolerite dykes in Magerøya (Lippard & Prestvik, 1995; Lippard & Prestvik, 1997; Roberts *et al.* 1991).

Svalbard

In James I Land in central Spitsbergen, a few sub-vertical to moderately dipping serpentinized basaltic dykes intrude Lower Devonian sedimentary strata of the Wood Bay Formation (Evdokimov *et al.*, 2006; Sirotkin *et al.*, 2012). One of these dykes is clearly truncated by an erosional unconformity and overlain by presumably Middle Devonian carbonates (Evdokimov *et al.*, 2006). The only carbonate-bearing Devonian rock unit in Spitsbergen, the Skamdalen Member of the Grey Hoek Formation, crops out in Andrée Land in northern Spitsbergen (Dallmann, 2015; Dallmann *et al.*, 2005; Dallmann *et al.*, 2006; Dallmann *et al.*, 2010). In addition, field observations indicate that the overlying carbonate beds are not Devonian but Carboniferous, specifically uppermost Pennsylvanian–lowermost Permian carbonates of the Wordiekammen Formation (Figure 2a). Thus, the basaltic dykes in Ekmanfjorden intruded in the Middle Devonian–early Late Pennsylvanian.

At Krosspynten in Andrée Land (Figure 1c), dozens of dominantly NNW–SSE-trending, up to 4 m-thick picritic dykes crosscut Lower Devonian sedimentary rocks of the Wood Bay Formation and yielded robust Middle Mississippian to Early Pennsylvanian Rb–Sr isochron ages and less reliable latest Silurian–earliest Permian K–Ar ages (Evdokimov *et al.*, 2006). These dykes were previously referred to as monchiquites, a glassy alkaline lamprophyre variety (Gayer *et al.*, 1966). They contain chromium spinel and mantle-derived peridotite xenoliths up to 3 cm in diameter indicating a primitive character and relatively deep origin from the upper mantle. These

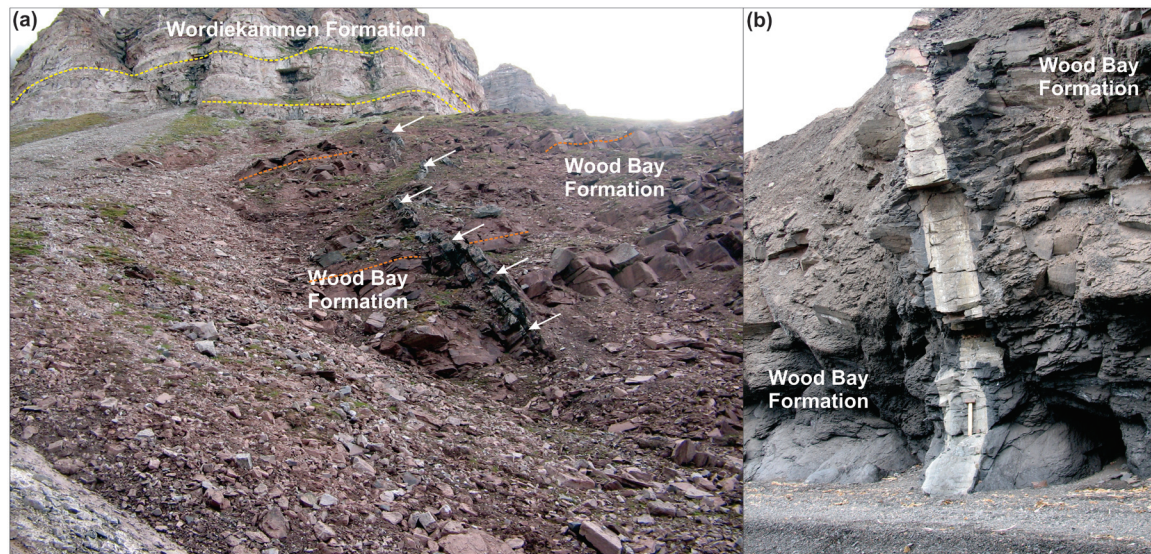


Figure 2. Outcrop photographs of Devonian–Mississippian dykes in (a) Ekmanfjorden and (b) Krosspynten. The basaltic dyke in (a) is depicted by white arrows and terminates below the angular unconformity between gently dipping reddish sedimentary rocks of the Lower Devonian Wood Bay Formation with flat-lying carbonate-dominated strata of the uppermost Pennsylvanian–lowermost Permian Wordiekammen Formation. The photos are from Alexander Sirotkin.

dykes are mildly folded (Figure 2b) probably as a result of Eurekan contraction. Similar minor intrusions were also observed in Systertoppene and Ragnarbreen (see Figure 1c for location), where they truncate late–post-Caledonian granite (Teben'kov *et al.*, 1996).

Other occurrences of Devonian–Mississippian dyke intrusions were reported from central Nordaustlandet and southern Spitsbergen. In Nordaustlandet, 2–5 m thick, 50–100 m long, stepping lamprophyre dykes truncate Caledonian basement rocks (Ohta, 1982). These dykes yielded Late Devonian–Early Mississippian K–Ar ages (376–362 Ma; Krasil'scikov, 1973; Ohta, 1982). In southern Spitsbergen, Birkenmajer *et al.* (2010) obtained Mississippian and Early Devonian K–Ar ages for a metadolerite dyke and hornblende in a gabbroic intrusion at Asbestodden respectively. The Early Devonian age is probably a minimum age as suggested by excess argon in the sample. In addition, their study also includes an Early Permian (whole rock) age for the gabbroic intrusion, which may reflect overprinting during Mesozoic hydrothermal alteration.

Cretaceous Diabasodden Suite in Svalbard

Cretaceous igneous rocks of the HALIP occur regionally as the Diabasodden Suite in Svalbard (Figure 1d; Dallmann *et al.*, 1999; Grogan *et al.*, 2000; Maher, 2001; Nejbort *et al.*, 2011; Senger *et al.*, 2013). They are characterized by dominant meter- to hundred-meter-thick sills in Pennsylvanian–Mesozoic sedimentary strata (Maher, 2001; Nejbort *et al.*, 2011; Senger *et al.*, 2013) and subsidiary dykes mostly occurring in metamorphosed basement rocks (Birkenmajer, 1986; Birkenmajer & Morawski, 1960; Birkenmajer *et al.*, 2010; Frebold, 1935). In the study area, the intrusive bodies are hosted by Pennsylvanian–Mesozoic sedimentary rocks (Dallmann, 2015; Senger *et al.*, 2013). Both the sills and dykes are still in their original emplacement positions (i.e., subhorizontal and subvertical), e.g., the Hatten feeder dyke (Nejbort *et al.*, 2011; Senger *et al.*, 2013), since they were intruded some distance from the main early Cenozoic Eurekan deformation, which shaped the West Spitsbergen Fold-and-Thrust Belt in western Spitsbergen (Figure 1b).

The Diabasodden Suite in Svalbard comprises three major axes of outcrops following major structural trends. In western to southern Spitsbergen and in eastern Spitsbergen to Nordaustlandet, outcrops of early Cretaceous intrusions are found along NNW–SSE-trending axes (Dallmann, 2015; Maher, 2001), i.e., parallel to the Caledonian and Grenvillian tectonic trends (e.g., Bernard-Griffiths *et al.*, 1993; Dallmeyer *et al.*, 1990; Dumais & Brønner, 2020; Gee *et al.*, 1994; Johansson *et al.*, 2004; Johansson *et al.*, 2005; Witt-Nilsson *et al.*, 1998), whereas they occur along a WNW–ESE-trending axis in central Spitsbergen (Dallmann, 2015; Maher, 2001; Senger *et al.*, 2013), i.e., parallel to late Neoproterozoic Timanian fabrics and faults (Koehl *et al.*, 2022a; Koehl *et al.*, 2023b; Figure 1b–c).

Eurekan deformation in eastern Spitsbergen

During the early Cenozoic, Svalbard and Greenland collided, which resulted in formation of the West Spitsbergen Fold-and-Thrust Belt in western Spitsbergen (Bergh & Andresen, 1990; Bergh *et al.*, 2000; Birkenmajer, 1972;

Dallmann, 1988; Dallmann & Maher, 1989; Dallmann *et al.*, 1993; Harland, 1969; Maher, 1988; Maher *et al.*, 1986; Tessensohn, 2001; Welbon & Maher, 1992) and gradually milder deformation in central and eastern Svalbard (Andresen *et al.*, 1992; Haremo & Andresen, 1992; Koehl, 2021; Koehl *et al.*, 2022a). Most early Cenozoic Eurekan structures in eastern Spitsbergen are gently dipping to sub-horizontal deformation zones and décollements (Andresen *et al.*, 1992; Haremo & Andresen, 1992).

In addition, minor early Cenozoic, Eurekan, top-west reverse faulting occurred along the Agardhbukta Fault in Nordmannsfonna (Koehl *et al.*, 2022a). Other workers have argued for major strike-slip movements along the Agardhbukta Fault segment of the Lomfjorden Fault Zone (Piepjohn *et al.*, 2019). However, this proposition is in conflict with the absence of lateral offset of the crustal-scale late Neoproterozoic Timanian thrust system across the Agardhbukta Fault in Nordmannsfonna (Koehl *et al.*, 2022a).

Methods

We used 2D Two-Way Time (TWT) seismic reflection data from the Norwegian National Data Repository for Petroleum Data (DISKOS database – survey ST9201) analyzed in Petrel (version 2021.3) to study a sub-surface magmatic system in Nordmannsfonna, eastern Spitsbergen. An alternative open-source software is OpendTect. Where possible, the seismic interpretation was tied to onshore geological maps produced by the Norwegian Polar Institute and previous studies, which show outcrops of Pennsylvanian to lower Cretaceous sedimentary rocks and Cretaceous dolerite intrusions (Andresen *et al.*, 1992; Dallmann, 2015; Haremo & Andresen, 1992). Notably, Cretaceous dolerite of the Diabasodden Suite at Domen and Agardhfjellet and Pennsylvanian–Permian sedimentary rocks of the Gipsdalen Group at Moskushornet provide robust ties to the interpreted seismic data (svalbardkartet.npolar.no; Figure 1d). Time constraints exist for Pennsylvanian–Permian sedimentary rocks at Malte Brunfjellet, where an Early Pennsylvanian age was obtained based on foraminifer biostratigraphy and cyclostratigraphy (Scheibner *et al.*, 2015).

We identified a few Cretaceous intrusion centers on the seismic data (black-shaded in Figure 3a–d) and the various ties to exploration wells and onshore outcrops allowed segregation of Early Cretaceous intrusions from older ones. Basaltic intrusions generally display high acoustic impedance contrasts with surrounding sedimentary strata and therefore appear as high-amplitude reflections. In contrast, felsic intrusions do not resolve well due to lower density and sonic velocity, thus resulting in lower acoustic impedance contrast (Mark *et al.*, 2018; Phillips *et al.*, 2018a). Bedding surfaces are generally truncated or terminate as onlap, toplap, or downlap reflections, whereas intrusions truncate other reflections though without offset.

One E–W-trending seismic line was depth-converted to illustrate better the west-dipping geometry of the intrusions (Figure 4). To do this, the seismic velocities from Gernigon *et al.* (2018) were used. The seismic data was also tied to the Plurdalen-1 and Raddedalen-1 well bores in Edgeøya (Bro & Shvarts, 1983; Harland & Kelly, 1997; Figure 1b–c). The

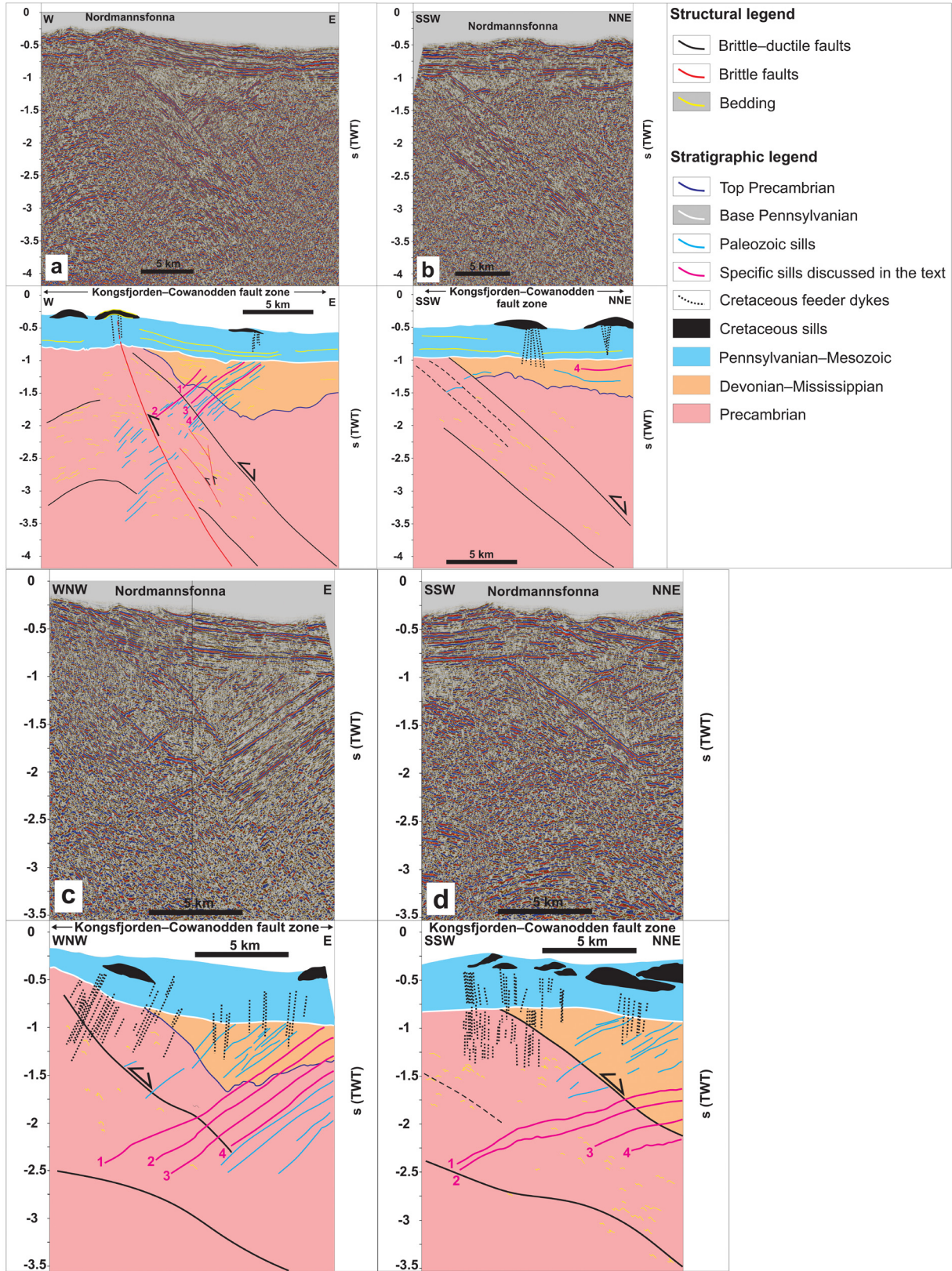


Figure 3. (a–d) Interpreted seismic sections in Nordmannsfonna, eastern Spitsbergen. The seismic profiles show moderately west-dipping, Middle Devonian–Mississippian sills and Cretaceous intrusions related to the HALIP. The profiles also show the Kongsfjorden–Cowanodden fault zone, which formed as a top-SSW Timanian thrust in the late Neoproterozoic and was reactivated and overprinted during the early–mid Paleozoic Caledonian Orogeny, late–post-Caledonian extensional collapse in the Devonian–Carboniferous, and early Cenozoic Eurekan contraction. (a–b) are modified after Koehl *et al.* (2022a).

present study favored the interpretation of Ordovician–Silurian rocks by Bro and Shvarts (1983) in the Raddalen-1 well (see Section 3 in Koehl *et al.*, 2022a for discussion on the well data). The Plurdalen-1 well bore penetrated Lower Devonian red beds dated to ca. 410 Ma (Harland & Kelly, 1997, their figure 5.14).

The Base Pennsylvanian unconformity in Nordmannsfunna was interpreted as a major unconformity truncating both Precambrian rocks and basement-seated structures (e.g., folded Kongsfjorden–Cowanodden fault zone) and Devonian–Mississippian sedimentary rocks and intrusions. This choice is supported by the strong dominance of unconformable contacts between Devonian–Mississippian sedimentary rocks (Red Bay, Andrée Land, and Billefjorden groups) and uppermost Mississippian–Pennsylvanian deposits (Gipsdalen Group) in Svalbard, the Barents Sea, and adjacent Arctic areas (Bugge *et al.*, 1995; Cutbill & Challinor, 1965; Cutbill *et al.*, 1976; Dalhoff *et al.*, 2000; Dalhoff & Stemmerik, 2000; Gjelberg, 1981; Koehl *et al.*, 2018; Koehl *et al.*, 2023b; Koehl & Muñoz-Barrera, 2018; Larssen *et al.*, 2005; Stemmerik *et al.*, 1991; Stemmerik *et al.*, 1998; Stemmerik, 2000; Worsley *et al.*, 2001). The ages of the sedimentary strata and of the major unconformity in the subsurface beneath Nordmannsfunna is further covered in the discussion.

The figures were designed using GlobalMapper (version 13.00) and CorelDraw (version 2017). Alternative open-source software packages are QGIS and GIMP respectively.

Results

Two groups of mafic intrusions were identified in eastern Spitsbergen (Koehl *et al.*, 2022a). The magmatic features that can be directly tied to onshore surface outcrops of Cretaceous dolerite intrusions are presented first as they have implications for the timing of emplacement of the other group of mafic intrusions.

Cretaceous dolerite dykes and sills of the HALIP

At the surface, lenticular bodies of moderate- to high-amplitude reflections several kilometers wide (black-shaded in Figure 3a–d) correlate with outcrops of Cretaceous dolerite sills of the HALIP in eastern Spitsbergen (Diabasodden Suite; Dallmann, 2015; Senger *et al.*, 2013). Just below the Cretaceous sills, the 0.5 second (TWT) thick succession of otherwise undisturbed and relatively undeformed, subhorizontal reflections are, in places, crosscut by high-frequency, subvertical disruption surfaces (dotted black lines in Figure 3a–d), e.g., in Dømen and Agardhfjellet (see Figure 1d for location). Given their relationship with the Cretaceous sills, these disruptions are interpreted as Cretaceous feeder dykes of the Central Spitsbergen Dolerite Centre (Nejbert *et al.*, 2011). This is consistent with the respective subvertical and subhorizontal geometries of Cretaceous dykes and sills of the Diabasodden Suite exposed onshore nearby areas (e.g., Senger *et al.*, 2013 their figures 6b and 12). Unlike the moderate–high-amplitude reflections characterizing the dolerite sills, the Cretaceous dolerite feeder dykes appear as

low-amplitude disruptions because they are sub-vertical and, thus, the acoustic impedance contrast is minimal along the dykes. Although these subvertical disruptions might possibly be artifacts, their occurrence mostly below Cretaceous sills intruded into post-Mississippian sedimentary rocks suggest they are dykes (Figure 3a–d).

West-dipping sills

In NNE–SSW along-strike sections, some of the high-amplitude reflections of the second group of intrusions appear overall sub-horizontal and gently undulating and parallel the axis of the NNE-plunging fold of the Kongsfjorden–Cowanodden fault zone (Figure 3b and d and Figure 5a–d). In E–W cross section, the second group of intrusions is characterized by a swarm of moderately west-dipping, high-amplitude, in places mildly undulating but mostly planar reflections (blue lines in Figure 3a and c). These contrast markedly with the dominantly subvertical low-amplitude or sub-horizontal lenticular character of Cretaceous dolerite dykes and sills respectively (dotted black lines and black bodies in Figure 3b and d). The west-dipping, high-amplitude reflections crosscut but do not offset the Kongsfjorden–Cowanodden fault zone at a c. 120° angle (black lines in Figure 3a–d and Figure 4) and sub-horizontal high- to low-amplitude reflections in the hanging wall of the fault. The latter are interpreted as Devonian–Mississippian sedimentary rocks (yellow lines in orange package in Figure 3a; see Koehl *et al.*, 2022a and Discussion section for further constraints on the age of the strata).

Upwards, the west-dipping, high-amplitude reflections either terminate within Devonian–Mississippian sedimentary rocks or are truncated by a major erosional unconformity. The reflections are difficult to trace within the Kongsfjorden–Cowanodden fault zone (Figure 3a and c), which consists of dense mylonite (Koehl *et al.*, 2022a). However, they show again a high amplitude in the footwall of the fault without offsetting the reflections they crosscut (Figure 3a and c).

The lack of offset across the moderately west-dipping, high-amplitude reflections suggests that they correspond to magmatic intrusions. The lower amplitude of these intrusions within denser mylonitic rocks of the Kongsfjorden–Cowanodden fault zone indicates a probable mafic–ultramafic character (i.e., much denser than felsic intrusions), thus presenting lower acoustic impedance contrast with relatively dense mylonites. Seismic depth conversion suggests a moderate dip for the west-dipping intrusions at Nordmannsfunna (Figure 4). Thus, they are interpreted as sills instead of dykes.

Discussion

Timing of pre-Pennsylvanian ultramafic-mafic intrusions in eastern Spitsbergen

The Nordmannsfunna area exhibits flat-lying carbonate-rich sedimentary rocks of the lower Permian Wordiekammen, Gipshuken, and Kapp Starostin formations overlain by lowermost Triassic–Lower Cretaceous sedimentary rocks (Andresen *et al.*, 1992; Dallmann, 2015; Haremo & Andresen, 1992).

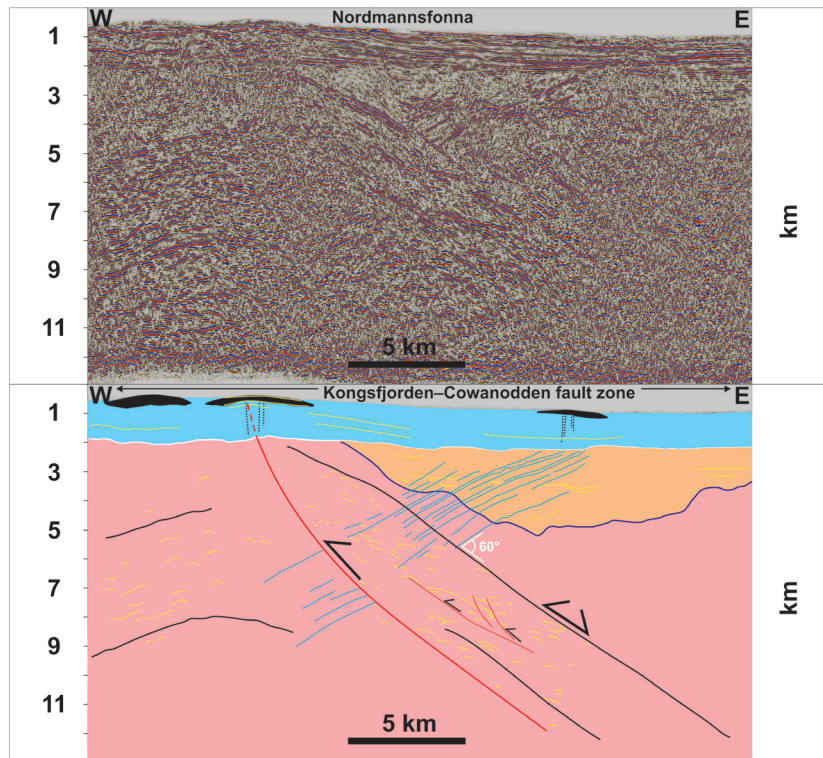


Figure 4. Depth-converted seismic section of **Figure 3a**. The section shows moderately west-dipping geometry of the sills and their intrusion at c. 60° angle off the Kongsfjorden–Cowanodden fault zone at Nordmannsfonna.

These correlate directly with the 0.5 second (TWT) thick succession of sub-horizontal strata seen in seismic data (**Figure 3a–d**). Thus, the erosional truncation of the west-dipping intrusions must be Pennsylvanian in age or older, suggesting a pre-Pennsylvanian age for the system of west-dipping ultramafic–mafic sills (**Figure 3a–d**).

Previous seismic interpretation of data from Nordmannsfonna suggested the presence of Devonian–Mississippian sedimentary rocks in the hanging wall of a major, folded, late Neoproterozoic thrust system, the Kongsfjorden–Cowanodden fault zone (**Figure 3a–d**; [Koehl et al., 2022a](#)). A thick (Lower?) Devonian sedimentary succession in the area is supported by the nearby Plurdalen-1 well in southwestern Edgeøya, which penetrated a c. 1000 m-thick succession of red-bed sedimentary rocks that yielded a ca. 410 Ma Rb–Sr age ([Harland & Kelly, 1997](#), their figure 5.14; see **Figure 1b–c** for location; see [Koehl et al., 2022a](#) for further discussion). Further support is the strong similarity between the Nordmannsfonna portion of the Kongsfjorden–Cowanodden fault zone and the latest Silurian–Devonian core-complex-bounding Keisarhjelmen Detachment in northwestern Spitsbergen ([Braathen et al., 2018](#); [Braathen et al., 2020](#); [Maher et al., 2022](#)). Notable similarities include a north-plunging, pre-Pennsylvanian anticline geometry and km-thick sedimentary successions in the hanging wall of the fault ([Braathen et al., 2018](#); **Figure 3a–d**). Thus, a Devonian–Mississippian age is proposed for the ultramafic–mafic sills in Nordmannsfonna.

Since there is no well control on the age of the rock succession in the hanging wall of the Kongsfjorden–Cowanodden fault zone in Nordmannsfonna, it is possible that the west-dipping, pre-Pennsylvanian intrusions are pre-Caledonian in age. Nevertheless, a critical factor in ascribing a Devonian–Mississippian (i.e., post-Caledonian) age to these intrusions is the early–mid Paleozoic reworking of the late Neoproterozoic Kongsfjorden–Cowanodden fault zone. Caledonian tectonism folded the fault into a 15–20 km wide, NNE-plunging anticline, whereas the west-dipping intrusions are only mildly undulating in places (**Figure 3a and c** and **Figure 5a–d**).

This age can be further constrained by considering other Devonian–Mississippian intrusions in central and western Spitsbergen. Examples are basaltic dykes in Ekmanfjorden and Mississippian picritic dykes at Krosspynten and in Purpurdalen, which intrude upper Lower Devonian rocks ([Evdokimov et al., 2006](#); [Sirotkin et al., 2012](#)) of the Dicksonfjorden Member of the Wood Bay Formation ([Blomeier et al., 2003](#); [Dallmann, 2015](#); [Friend et al., 1966](#); [Friend & Moody-Stuart, 1972](#)). The basaltic dykes in Ekmanfjorden are truncated by uppermost Pennsylvanian–lowermost Permian strata of the Wordiekammen Formation (**Figure 2a**; [Evdokimov et al., 2006](#); [Sirotkin et al., 2012](#)). The sills at Nordmannsfonna are proposed to also intrude rocks of the Dicksonfjorden Member of the Wood Bay Formation because of the widespread distribution of this reddish rock unit in Svalbard ([Dallmann & Piepjohn, 2020](#); [Friend et al., 1966](#);

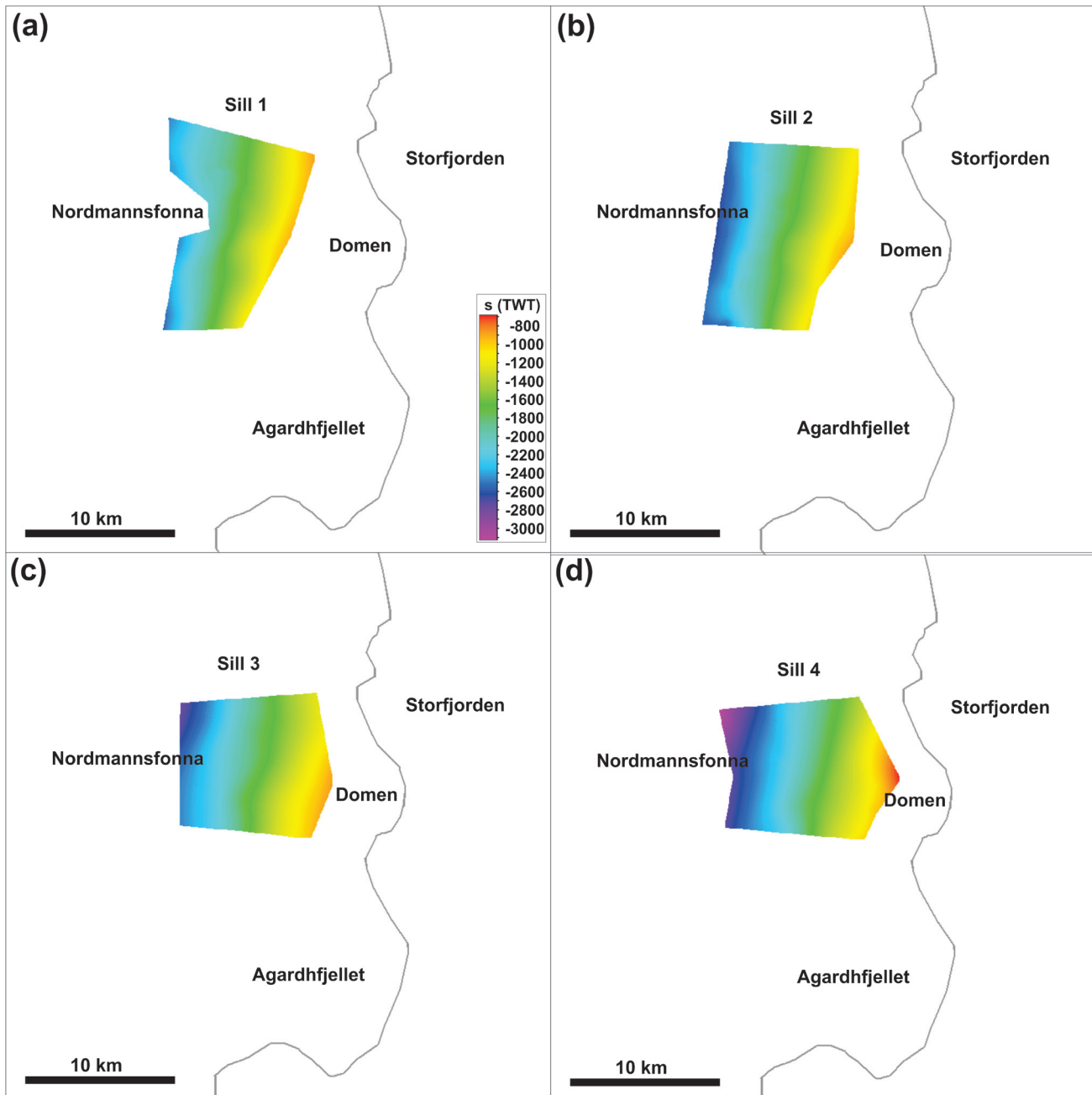


Figure 5. Time maps of the four Middle Devonian–Mississippian sills. The sills are highlighted in fuchsia and numbered 1–4 in Figure 3a–d. The maps delineate the N–S strike and moderately west-dipping geometry of the sills.

Friend & Moody-Stuart, 1972; Harland & Kelly, 1997). Hence, a Middle Devonian–Mississippian age is proposed for the ultramafic–mafic sills.

Model for the development of Devonian–Mississippian intrusions in Svalbard

Nordmannsfonna

Devonian–Mississippian sills in Nordmannsfonna truncate the late Neoproterozoic, NNE-dipping Kongsfjorden–Cowanodden

fault zone (Figure 6a), which was folded and reactivated and/or overprinted during the Caledonian Orogeny (Figure 6b). Devonian–Mississippian inversion of the fault is suggested by the presence of Devonian (to Mississippian?) sedimentary rocks in the hanging wall of the fault in the east (Figure 3a and c and Figure 6c; Koehl *et al.*, 2022a). The sills intruded at a c. 60° angle to the Kongsfjorden–Cowanodden fault zone, possibly along extensional fractures (tension gashes? Beach, 1975) formed through reactivation and/or overprinting of the fault during

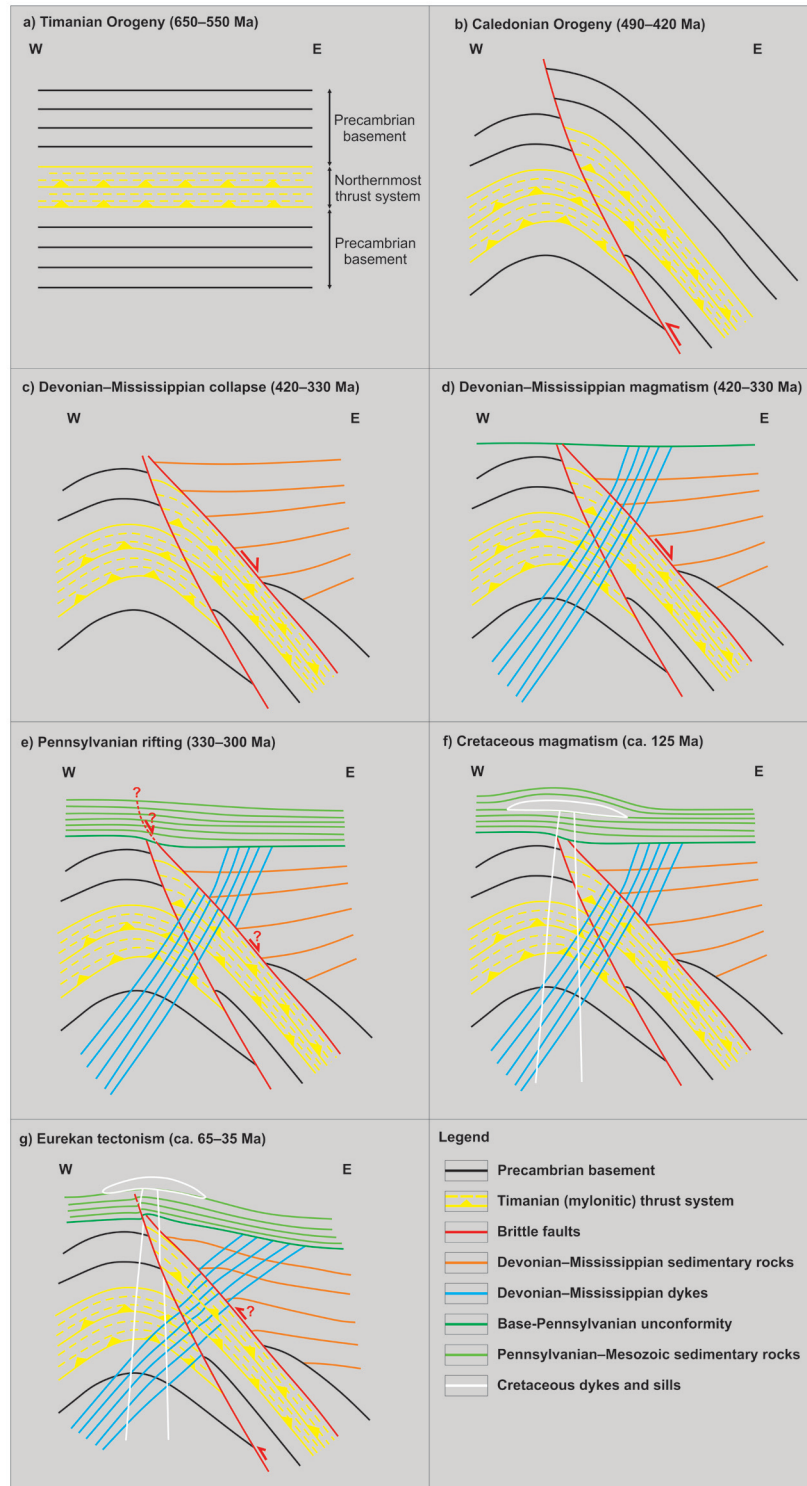


Figure 6. Tectonic history of pre-Pennsylvanian sills at Nordmannsfonna. (a) Formation of a late Neoproterozoic NNE-dipping thrust system (Kongsfjorden–Cowanodden fault zone). (b) Top-west Caledonian thrusting along the east-dipping Agardhbukta Fault and folding of the Kongsfjorden–Cowanodden fault zone at the eastern flank of the Caledonian anticline and deposition of syn-tectonic Devonian (–Mississippian?) sedimentary strata during post-Caledonian collapse. (c) Inversion of the Kongsfjorden–Cowanodden fault zone at the eastern flank of the Caledonian anticline and deposition of syn-tectonic Devonian (–Mississippian?) sedimentary strata during post-Caledonian collapse. (d) Intrusion of west-dipping sills in the Devonian–Mississippian. (e) Regional erosion in the latest Mississippian and deposition of Pennsylvanian sedimentary rocks, along a high-angle splay of the inverted Kongsfjorden–Cowanodden fault zone. (f) Deposition of Mesozoic sedimentary strata and intrusion of Cretaceous dolerite of the HALIP. (g) Partial erosion of Pennsylvanian–Mesozoic strata and minor, early Cenozoic, reactivation of the Kongsfjorden–Cowanodden fault zone and Agardhbukta Fault during the Eureka tectonic event and mild folding and offset of overlying post-Caledonian sedimentary rocks, intrusions, and base-Pennsylvanian unconformity. Note the back-tilting (i.e., clockwise rotation) of Middle Devonian–Mississippian sills in the hanging wall of the Agardhbukta Fault and of the Kongsfjorden–Cowanodden fault zone. Figure is from Koehl *et al.* (2022a).

late–post-Caledonian extensional collapse (Figure 6d). Magma intruded where the thrust system was thinnest (Figure 6c–d). Despite the geometrical and seismic facies similarities of the intrusions in Nordmannsfonna and Pennsylvanian–Permian intrusions of the Skagerrak LIP in southern Norway (Phillips *et al.*, 2018a) normal-fault-block tilting is not considered because of the lack of tilting of sedimentary strata in the hanging wall of the Kongsfjorden–Cowanodden fault zone (Figure 3a and c). Devonian–Mississippian magma emplacement was followed by deposition of Pennsylvanian to Mesozoic sedimentary strata, intrusion of Early Cretaceous sills and dykes of the HALIP, and mild Eureka folding and reactivation of the Kongsfjorden–Cowanodden fault zone (Figure 6e–g Koehl *et al.*, 2022a).

Ekmanfjorden

The situation in Ekmanfjorden (Figure 1c) is similar to that described for the intrusions in Nordmannsfonna. The main difference is the strike of the intrusions, which is WNW–ESE (320–330°) with a steep dip (60–70°) to the southwest (Figure 2a). This is probably due to the NNE-dipping

geometry of the Kongsfjorden–Cowanodden fault zone in this area, i.e., absence of Caledonian reworking (Figure 7a). As in Nordmannsfonna, the dykes intruded at a 60° angle to the fault, most likely along extensional fractures (tension gashes?) formed during extensional reactivation of mylonitic thrust surfaces during late–post-Caledonian extensional collapse (Figure 7b). Cretaceous intrusions of the HALIP also intruded along a WNW–ESE-striking axis (e.g., Hatten feeder dyke; Senger *et al.*, 2013), i.e., likely along the Kongsfjorden–Cowanodden fault zone (Figure 7c).

Possible relationship to diamond-rich intrusions in northwestern Russia

Kimberlitic accessory minerals (e.g., chromium spinel, chromium diopside, moissanite, and pyrope) in the dykes at Krosspynten and Purpurdalen (Evdokimov *et al.*, 2006; Sirotkin *et al.*, 2012) suggest that Middle Devonian–Mississippian intrusions in Svalbard might have a composition similar to that of kimberlitic dyke swarms of the Kola–Dnieper LIP in northwestern Russia (Larionova *et al.*, 2016; Puchkov *et al.*, 2016; Terekhov *et al.*, 2012). Considering the overlapping time constraints

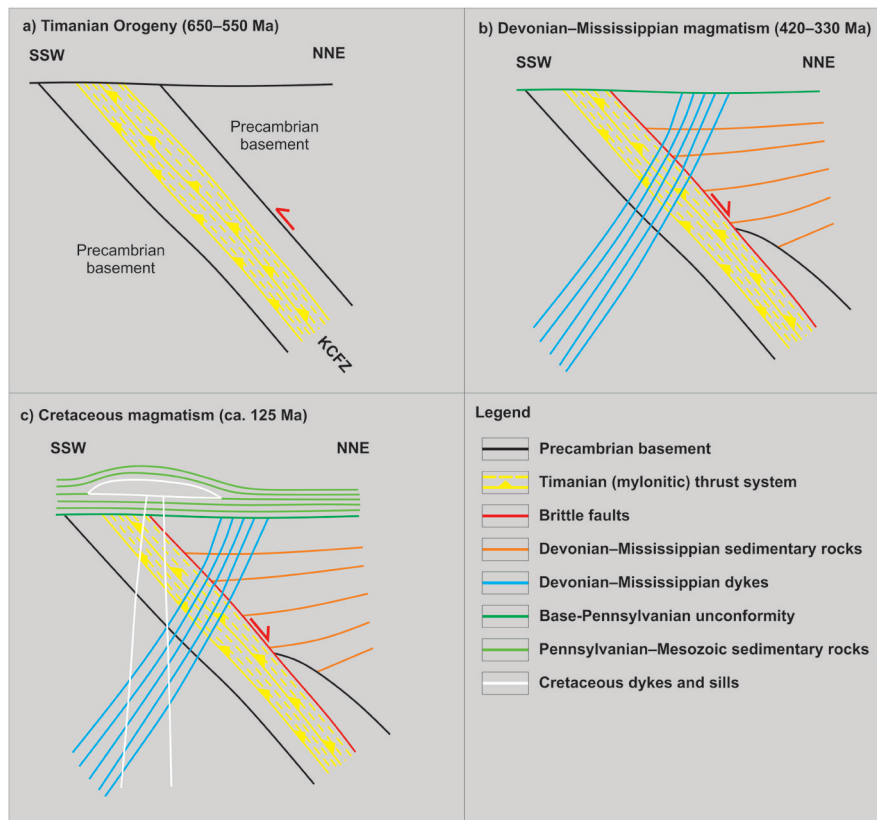


Figure 7. Tectonic history of Middle Devonian–Mississippian (–earliest Late Pennsylvanian?) basaltic dykes in Ekmanfjorden. (a) Formation of the NNE-dipping Kongsfjorden–Cowanodden fault zone (KCFZ) during the Timanian Orogeny in the late Neoproterozoic. (b) Deposition of several kilometers thick, Lower Devonian, collapse-related sedimentary rocks of the Wood Bay Formation along the inverted Kongsfjorden–Cowanodden fault zone and intrusion of Middle Devonian–Mississippian dykes sub-perpendicular to the fault. (c) Deposition of Mesozoic sedimentary strata and intrusion of Cretaceous dolerite of the HALIP along a WNW–ESE-trending axis, i.e., parallel to the fault. Notice that in this case, the Eureka event possibly led to mild (km-scale) sinistral strike-slip movements along the Kongsfjorden–Cowanodden fault zone, which are not relevant to the intrusion of the dykes in Ekmanfjorden.

for emplacement of the sills in Nordmannsfonna (present study; Figure 3a–d) and in Systertoppene and Ragnarbreen (Teben'kov *et al.*, 1996; Figure 1c), it is possible that these too may have a composition similar to that of the dyke swarms in northwestern Russia.

This inference is supported by evidence from Upper Triassic sandstones of the De Geerdalen Formation in Svalbard, which contain detrital chromium spinel grains compositionally similar to spinel group minerals from kimberlites and related rocks (Svånå Harstad, 2016, his figures 6.48 and 6.49). Based on the absence of Triassic magmatic rocks in Svalbard, Svånå Harstad (2016) argued that the chromium spinel in the De Geerdalen Formation in Edgeøya, Hopen, and central–southern Spitsbergen originated from Lower Triassic Siberian Trap ultramafic magmatic rocks in northern Russia. Such an origin is plausible given the age peak at ca. 250 Ma for detrital zircon in the De Geerdalen Formation in Svalbard (Bue & Andresen, 2014, their figure 6). The Siberian flood volcanic province in northern Russia comprises numerous alkaline–ultramafic complexes, and kimberlitic to lamprophyric rocks of these minor intrusions could be a source of detrital chromium-rich spinel (e.g., Augland *et al.*, 2019; Reguir *et al.*, 2021; Sun *et al.*, 2014). However, Triassic kimberlite magmatism is also known from northern Canada (Tappe *et al.*, 2018; Zurevinski *et al.*, 2008) and cannot be excluded as a source of detrital chromium-spinel.

Regardless, spinel group minerals are sensitive to oxidation-related alteration and therefore do not typically travel as far from their magmatic sources as other heavy minerals such as zircon and garnet (Dare *et al.*, 2016; Griffin *et al.*, 1997; Haugaard *et al.*, 2021). Thus, a proximal source for chromium spinel in the Upper Triassic De Geerdalen Formation is more likely than magmatic rocks in northern Russia or Canada. In addition, the distance between Svalbard and the Siberian Traps or Arctic Canada is rather large, which suggests that detrital Siberian spinel would occur in fine-grained, clay-dominated sedimentary rocks similar to the Ural-sourced Triassic formations in the Norwegian sector of the Barents Sea, which are the offshore time-equivalent of the De Geerdalen Formation (e.g., Snadd Formation; Seim *et al.*, 1988; Smelror *et al.*, 2009).

Since chromium spinel was found in sandstone (i.e., relatively coarse-grained sedimentary rocks), the sediment source is likely proximal to the depocenter (e.g., McLaren & Bowles, 1985). Thus, it is probable that the detrital chromium spinel in the De Geerdalen Formation derived from nearby magmatic rocks in Svalbard, e.g., Devonian–Mississippian dykes of central (Evdokimov *et al.*, 2006) and eastern Spitsbergen (present study; Figure 3a–d). Since they potentially have a composition similar to kimberlitic and ultramafic-alkaline magmatism in northwestern Russia such as on the Kola Peninsula (Puchkov *et al.*, 2016), additional magmatic sources of the detrital chromium spinel population could be the ultramafic–mafic dykes in Nordaustlandet (Krasil'scikov, 1973; Ohta, 1982), and/or primitive magmatic rocks from Loppa High (and other basement highs) in the Barents Sea (Norsk Hydro, 1986). This is supported by U–Pb ages of detrital zircons suggesting that sediments of the De Geerdalen Formation partly derived from Devonian–Mississippian sedimentary rocks on a second or

third cycle (Bue & Andresen, 2014, their figure 6) and by the erosional truncation of Devonian–Mississippian dykes in Nordmannsfonna (Figure 3a and c).

Another possible line of evidence for a Devonian–Mississippian origin of the detrital chromium spinel grains is the absence of rocks of the Upper Triassic De Geerdalen Formation in Nordmannsfonna and nearby areas, which suggests that the area was subjected to erosion during the Middle–Late Triassic. This is further supported by paleosols (Enga, 2015; Lord *et al.*, 2022) and shallow marine to terrestrial sedimentary rocks (Johansen, 2016) in the De Geerdalen Formation onshore Edgeøya and in the Snadd Formation in the Barents Sea. These suggest an environment prone to erosion during the Late Triassic evolution of Svalbard and surrounding areas.

Coal fragments were found in the Middle–Upper Triassic Barentsøya, Tschermafjellet, De Geerdalen and Wilhelmsøya formations in exploration well 7816/12-1 in Reindalen (Eide *et al.*, 1991; see location in Figure 1c). Coal also occurs in the southeastern Barents Sea (Smelror *et al.*, 2009) but the fragility of coal makes it unlikely to have been transported as large (centimeter-sized) fragments over long distances, suggesting a nearby source. Since no autochthonous coal has been reported from the Triassic sedimentary rocks of Svalbard and nearby areas of the Barents Sea (Dallmann *et al.*, 1999; Smelror *et al.*, 2009), the presence of coal fragments in Triassic sedimentary rocks suggests reworking and redeposition of Mississippian coal measures.

Middle Devonian–Mississippian sills in Nordmannsfonna are presently overlain by a c. 1.5 km thick succession of Lower Pennsylvanian–Mesozoic sedimentary rocks (Figure 4), including the Malte Brunfjellet Formation (Scheibner *et al.*, 2015) and the Wordiekammen, Gipshuken, and Kapp Starostin formations (Dallmann *et al.*, 1999; Dallmann, 2015). This suggests that the sills were likely eroded during the Late Mississippian–earliest Pennsylvanian but were subsequently buried below Lower Pennsylvanian–Middle Triassic sedimentary rocks, including deposition of the De Geerdalen Formation during the Late Triassic. Nevertheless, the abundant Devonian–Mississippian zircons in sandstones of the De Geerdalen Formation (Bue & Andresen, 2014) suggests that Devonian–Mississippian igneous rocks were exposed nearby during the Late Triassic. A possible source is the Loppa High, where potential Mississippian intrusions were penetrated by exploration wells (Norsk Hydro, 1986). There, exploration well 7120/2-1 penetrated dolerite intrusions, which yielded an inconclusive, probably biased 179 Ma (latest Early Jurassic) K–Ar age, which should be treated as a minimum (<https://factpages.sodir.no/en/wellbore/PageView/Exploration/All/473>; Norsk Hydro, 1986). The dolerites are unconformably covered by sedimentary rocks equivalent to those of the latest Mississippian Landnøringsvika Formation in Bjørnøya and Hultberget Formation in Spitsbergen (Norsk Hydro, 1986). The Loppa High is a long-lived basement high, which is cored by a folded late Neoproterozoic thrust system (Koehl *et al.*, 2023c) and was repeatedly eroded during the Paleozoic–Mesozoic (Indrevær *et al.*, 2017 their figure 5a; Anell *et al.*, 2019; Koehl *et al.*, 2023c their supplement S2).

The sources of Triassic sediments in Svalbard are still a matter of debate and some studies argue for a dominant (south-) easterly source (e.g., the Urals; [Anell *et al.*, 2014](#); [Gilmullina *et al.*, 2021](#); [Smelror *et al.*, 2009](#)). Others suggest sourcing from the (north-) west (Laurentia; [Bue & Andresen, 2014](#)). [Bue and Andresen \(2014\)](#) argue that Early–Middle Triassic sediments in Svalbard were sourced from northern Greenland and then reworked and redeposited during the Late Triassic as suggested by the mixing of Early–Middle Triassic zircons with Late Triassic zircons in Upper Triassic rocks of the De Geerdalen Formation. This model is further supported by rare specimens of *Leschikisporis aduncus* spores in Upper Triassic strata of the De Geerdalen Formation on Hopen, which are abundant in the underlying Lower–Middle Triassic sedimentary rocks and therefore considered to be reworked ([Paterson & Mangerud, 2015](#)). Sourcing Lower–Middle Triassic sediments from the (north-) west and their reworking during the Late Triassic is therefore plausible. It would have allowed transport of chromium spinel grains eroded from the Middle Devonian–Mississippian ultramafic–mafic intrusions in Nordmannsfonna or nearby areas towards the (south-) east, e.g., towards Edgeøya where the chromium spinel was found ([Svåná Harstad, 2016](#)).

A Devonian–Mississippian Large Igneous Province in Arctic Norway and Russia

The sills at Nordmannsfonna and those previously identified at Krosspynten, Purpurdalen, and Ekmanfjorden ([Evdokimov *et al.*, 2006](#); [Gayer *et al.*, 1966](#); [Sirotkin *et al.*, 2012](#)) and Systertoppane and Ragnarbreen ([Teben'kov *et al.*, 1996](#); [Figure 1c](#)) suggest an episode of widespread mantle-derived magmatism in Svalbard during the Middle Devonian–Mississippian. Extensive magmatism in Svalbard at that time is supported by the Mississippian age obtained for a metadolerite in southern Spitsbergen ([Birkenmajer *et al.*, 2010](#)).

Indirect evidence for widespread Late Devonian–Mississippian magmatism in Svalbard comes from the 377–326 Ma ^{40}Ar – ^{39}Ar ages for micaschists and mylonite in Oscar II Land in western Spitsbergen, which suggest a post-Caledonian thermal event ([Michalski *et al.*, 2017](#)). Since the Svalbardian event (presumed Late Devonian–earliest Mississippian E–W-oriented contraction) is unlikely to have occurred on Svalbard ([Koehl *et al.*, 2022b](#)), the thermal event recorded by these Late Devonian–Mississippian ^{40}Ar – ^{39}Ar ages may be regional magmatism possibly related to late–post-Caledonian extensional collapse and/or rifting. Note that the latest Devonian–earliest Mississippian ages for amphibolite-facies metamorphism on Prins Karls Forland ([Kosminska *et al.*, 2020](#)) are associated with extensional kinematics ([Schneider *et al.*, 2018](#)), i.e., with the collapse of the Caledonides ([Koehl *et al.*, 2022b](#)).

A Mississippian age was recently obtained for dolerite dykes in exploration well 7120/2-1 (see completion report at www.sodir.no) on Loppa High in the western Barents Sea

([Norsk Hydro, 1986](#)). Extensive Devonian–Mississippian magmatism in the western Barents Sea region is supported by abundant ignimbrite and basalt in sidewall cores at 2505–3502 m depth within (Upper Devonian–?) Mississippian sedimentary rocks in well 7120/2-1 (see completion report at www.sodir.no).

Analogous Mississippian dolerite dykes are known from northern Finnmark in northern Norway ([Lippard & Prestvik, 1995](#); [Lippard & Prestvik, 1997](#); [Roberts *et al.*, 1991](#)). Late Devonian dykes occur in eastern Finnmark ([Guise & Roberts, 2002](#)), on the Kola Peninsula, the Arkhangelsk Province ([Larionova *et al.*, 2016](#); [Roberts & Onstott, 1995](#); [Terekhov *et al.*, 2012](#)), and in the Ural Mountains and the Pay–Khoy Ridge on the Yugorsky Peninsula in northwestern Russia ([Puchkov *et al.*, 2016](#); [Shaybekov, 2010](#)).

[Puchkov *et al.* \(2016\)](#) postulated a Devonian plume center in the southeastern Barents Sea at the center of a multi-armed Devonian paleorift ([Figure 1a–b](#)). A NE–SW-trending arm extends from the southeastern Barents Sea to the Kola Peninsula, where it continues as the Kontozero Graben ([Kramm *et al.*, 1993](#)) hosting diamond-rich kimberlitic dyke swarms of Devonian age ([Larionova *et al.*, 2016](#); [Terekhov *et al.*, 2012](#); [Figure 1b](#)). Another rift segment strikes WNW–ESE and extends from the southeastern Barents Sea to the Pechora Basin and the Yugorsky Peninsula in the southeast. There it comprises a major, hundreds of km-long Devonian dolerite dyke swarm ([Puchkov *et al.*, 2016](#); [Shaybekov, 2010](#); [Figure 1a–b](#)). Yet another WNW–ESE-striking arm extends from the rift's center in the southeastern Barents Sea to eastern Svalbard, near the location of the newly reported sills in Nordmannsfonna ([Figure 1a–b](#)). Thus, it is conceivable that the mantle plume center inferred by [Puchkov *et al.* \(2016\)](#) generated the Devonian dykes on the Kola Peninsula ([Terekhov *et al.*, 2012](#)) as well as the Middle Devonian–Mississippian sills in eastern Spitsbergen ([Figure 3a–d](#)) and dykes in central ([Evdokimov *et al.*, 2006](#); [Gayer *et al.*, 1966](#); [Sirotkin *et al.*, 2012](#); [Teben'kov *et al.*, 1996](#)) and southern Spitsbergen ([Birkenmajer *et al.*, 2010](#)).

The newly identified intrusions in Nordmannsfonna and those already known in Svalbard ([Evdokimov *et al.*, 2006](#); [Gayer *et al.*, 1966](#); [Sirotkin *et al.*, 2012](#)), as well as potential analogs from the Loppa High ([Norsk Hydro, 1986](#)), suggest that the Middle Devonian–Mississippian Kola–Dnieper LIP extends all the way to Svalbard and the western Barents Sea. The revised LIP thus extends c. 2000 km along a WNW–ESE-trending axis from the Yugorsky Peninsula in northwestern Russia to Svalbard and over 3200 km from the Pripyat–Dnieper–Donets Rift to Svalbard along a N–S-trending axis ([Figure 1a](#)). This would require intense plume-related magmatism to have occurred thousands of kilometers from the presumed plume center in the southeastern Barents Sea ([Puchkov *et al.*, 2016](#); [Figure 1a–b](#)). The west-dipping character of the newly reported ultramafic–mafic sills from eastern Spitsbergen ([Figure 3a–d](#),

Figure 4, and Figure 5a–d) is inconsistent with these magmatic bodies forming part of a giant radiating dyke swarm sourced from a plume center in the southeastern Barents Sea (Puchkov *et al.*, 2016; Figure 1a–b). The observations argue instead for a local lithospheric mantle source beneath Svalbard, e.g., due to mantle decompression during late–post-Caledonian extensional collapse.

Devonian–Mississippian magmatism in Baltica and Siberia and implications radiating dyke swarms

Magmatism contemporaneous with the Kola–Dnieper LIP occurred in the Yakutsk–Vilyui LIP during the Late Devonian–Mississippian (Courtilot *et al.*, 2010; Hamilton *et al.*, 2004; Powerman *et al.*, 2013; Ricci *et al.*, 2013; Tretiakova *et al.*, 2017) and in the Altay–Sayan LIP during the Early Devonian–Mississippian (Babin *et al.*, 2004; Broussolle *et al.*, 2019; Kong *et al.*, 2023; Kuzmin *et al.*, 2010; Malkovets *et al.*, 2003; Predtechensky & Krasnov, 1967; Safonova *et al.*, 2004; Vorontsov *et al.*, 2013; Vorontsov *et al.*, 2021).

The strong similarities between the Kola–Dnieper LIP and the Yakutsk–Vilyui LIP, including their (extensional) structural styles, suggest a similar setting of emplacement. More specifically, both LIPs are characterized by multi-arm paleorifts and numerous magmatic bodies have kimberlitic and alkaline mafic to ultramafic compositions. Dyke swarms seem to radiate from potential plume centers in the southeastern Barents Sea and southern Vilyui Rift respectively (Figure 1a). Some studies suggested that both LIPs originated from mantle plumes sourced from the edge of the African Large Low-Shear Velocity Province (Puchkov *et al.*, 2016). This model relies on Large Low-Shear Velocity Provinces being stationary and underlying the appropriate regions and on accurate plate reconstructions back to Paleozoic times. The model is also based on the converging pattern displayed by giant radiating dyke swarms, from which magmatic plume centers are commonly inferred (Ernst *et al.*, 1995; Ernst & Buchan, 1997; Minakov *et al.*, 2017; Puchkov *et al.*, 2016).

Similarities in magmatism of the Kola–Dnieper LIP and the Altay–Sayan LIP are more tenuous. Notably, the timing of the first phase of magmatism (Early–Middle Devonian) only partly overlaps with the Kola–Dnieper LIP (Babin *et al.*, 2004; Malkovets *et al.*, 2003; Predtechensky & Krasnov, 1967). In addition, the Altay–Sayan LIP consists dominantly of granites with very few mafic–ultramafic rocks (Predtechensky & Krasnov, 1967; Safonova *et al.*, 2004; Vorontsov *et al.*, 2013), which contrasts with the dominance of mafic–ultramafic intrusions in the Kola–Dnieper LIP (Larionova *et al.*, 2016; Mahotkin *et al.*, 2000; Pease *et al.*, 2016; Puchkov *et al.*, 2016; Terekhov *et al.*, 2012; Wilson *et al.*, 1999). Nevertheless, some studies suggest an intermediate composition between intraplate (ocean-island-basalts-like) and active margin (island-arc-basalts-like) magmatism. Consequently, the influence of a mantle plume on the Devonian–Mississippian magmatism recorded by the Altay–Sayan LIP was suggested (e.g.,

Kuzmin *et al.*, 2010; Vorontsov *et al.*, 2013; Vorontsov *et al.*, 2021), possibly the same plume proposed to be the source of the Yakutsk–Vilyui LIP (Kuzmin *et al.*, 2010).

In the study area (Figure 1d) and elsewhere in Spitsbergen (Figure 1c), the intrusion of Middle Devonian–Mississippian mantle-derived magmatic rocks is probably related to late–post-Caledonian, collapse-related reactivation–overprinting along preexisting Timanian thrust systems (Figure 6 and Figure 7). This line of reasoning may be applied to the mafic–ultramafic intrusions of the entire Kola–Dnieper LIP (Figure 1a). In northeastern Norway (Figure 1b), WNW–ESE- and NE–SW-striking Late Devonian–Mississippian dolerite dykes intruded respectively parallel to Timanian thrusts and along bedding surfaces, the latter of which were folded into tight, northwest-plunging folds during the Caledonian Orogeny (Koehl *et al.*, 2019; Koehl & Stokmo, 2024; Nasuti *et al.*, 2015).

On the Kola Peninsula (Figure 1a–b), NE–SW-striking ultramafic–mafic dykes and the related Kontozero Graben formed parallel to preexisting Caledonian grain (Koehl *et al.*, 2022a their figure 5 showing Caledonian grain extending onto the Kola Peninsula). Finally, in the Urals, Kanin Peninsula, Pechora Basin, Yugorsky Peninsula, and Novaya Zemlya (Figure 1a–b), Devonian–Mississippian intrusions follow inherited Timanian thrust systems (Korago *et al.*, 2004; Kostyuchenko *et al.*, 2006; Lopatin *et al.*, 2001; Lorenz *et al.*, 2004; Olovyanishnikov *et al.*, 2000; Figure 1b). Thus, the existence of a mantle plume in the Barents Sea is not required to explain the radiating pattern of Devonian–Mississippian dyke swarms in this region.

In eastern Europe, the Pripyat–Dnieper–Donets Rift developed parallel to the Tornquist Zone, which is a long-lived zone of deformation and magmatism along the southwestern edge of the East European Craton (Abramovitz *et al.*, 1999; Cotte *et al.*, 2002; Coward, 1990; Graversen, 2009; Hossein Shomali *et al.*, 2006; Narkiewicz *et al.*, 2015; Pegrum, 1984; Phillips *et al.*, 2018b; Tappe *et al.*, 2016). Evidence for late Neoproterozoic deformation along the Tornquist Zone is preserved in exotic Gondwanan terranes in the southwest (Belka *et al.*, 2003; Narkiewicz & Petecki, 2017; Zelazniewicz *et al.*, 2009). However, this major structure may be as old as Paleoproterozoic (Koehl *et al.*, 2024). Thus, in this case too, a mantle plume is not required to explain the geometry of the Pripyat–Dnieper–Donets Rift and dyke swarms in the Urals, which all appear to radiate from the Caspian Sea in map view, but most likely emplaced along preexisting late Neoproterozoic (or older) orogenic structures.

A similar approach can be applied to the Yakutsk–Vilyui and Altay–Sayan LIPs, whose emplacement may have been influenced by pre-Devonian orogenic structures. Possible candidates to have facilitated intrusion of magma of the Altay–Sayan LIP are orogenic structures of the late

Neoproterozoic–early Paleozoic Central Asian Orogenic Belt/Baikalian Orogen, which occur on the southern rim of the Siberian Craton and largely overlap with the location of the Altay–Sayan LIP (Filatova & Khain, 2008; Lehman *et al.*, 2010; Wang *et al.*, 2021).

In eastern Siberia, the NE–SW-striking southwestern dyke swarm of the Yakutsk–Vilyui LIP coincides with and runs parallel to structures of the Akitkan Orogen (Didenko *et al.*, 2009; Donskaya *et al.*, 2009; Donskaya, 2020), which extends from the Baikal Lake to the elbow-shaped corner of the Verkhoiansk Mountains where a potential plume center was proposed (Figure 1a). Farther north, the northwestern dyke swarm of the Yakutsk–Vilyui LIP strikes NW–SE, i.e., parallel to overlapping Paleoproterozoic shear zones and deformation belts of the Hapschan Orogen/Khapchan Belt, which separates the Anabar Province from the Olenek Province (Donskaya, 2020; Gusev *et al.*, 2021; Sears & Price, 2000). Thus, the radiating pattern of dykes of the Yakutsk–Vilyui LIP is most likely related to inherited Paleoproterozoic orogenic structures rather than to radial uplift around a mantle plume center in eastern Siberia.

Other examples of radiating dyke swarms are the Early Cretaceous dykes related to the HALIP in Svalbard, Franz Josef Land, and Arctic Canada, which appear to converge in the Arctic Ocean north of Franz Josef Land and Svalbard (Figure 1a). In Franz Josef Land, Cretaceous dolerite intrusions strike WNW–ESE (Minakov *et al.*, 2017; Shipilov & Karyakin, 2014; Figure 1a). In Svalbard, they strike N–S in the northeast and the southwest, and WNW–ESE in central Spitsbergen (Dallmann, 2015; Grogan *et al.*, 2000; Maher, 2001; Nejbert *et al.*, 2011; Senger *et al.*, 2013), i.e., parallel to well-known Caledonian fabrics and structures in northeastern (e.g., Dumais & Brönnner, 2020; Flood *et al.*, 1969; Gee *et al.*, 1994; Johansson *et al.*, 2004; Johansson *et al.*, 2005; Ohta, 1982; Witt-Nilsson *et al.*, 1998) and southwestern Svalbard (Birkenmajer, 1975; Birkenmajer, 2004; Manby, 1986) and to Timanian thrust systems in central Spitsbergen (Koehl, 2020; Koehl, 2021; Koehl *et al.*, 2022a; Koehl *et al.*, 2023b). In Arctic Canada, Early Cretaceous dolerite dykes strike NE–SW from Melville Island to Ellesmere Island and N–S in Axel Heiberg Island (Ernst & Buchan, 1997; Jackson & Halls, 1988; Kingsbury *et al.*, 2016; Figure 1) and are parallel to structures formed during the M’Clintock Orogeny (Estrada *et al.*, 2018; Powell & Schneider, 2022).

Mantle plume models are by default widely applied to explain LIPs worldwide (e.g., Burke & Torsvik, 2004; Ernst, 2014; Ernst *et al.*, 2019). However, geochemical data do not necessarily require deep origins and constraints from magmatic rocks remain inconclusive as to whether upwelling mantle plume sources produced certain LIPs (Hawkesworth & Schersten, 2007; Tappe *et al.*, 2020). Thus far, structural evidence such as giant radiating dyke swarms have been assumed

to indicate mantle plume activity (e.g., Ernst *et al.*, 1995; Ernst & Buchan, 1997; Minakov *et al.*, 2017; Puchkov *et al.*, 2016). The present work shows, however, that the apparent radiating pattern of some groups of intrusions extending hundreds to thousands of km is merely controlled by preexisting orogenic structures (e.g., Kola–Dnieper LIP, Yakutsk–Vilyui LIP, and HALIP). As such, even if the magma was sourced from a plume center, the apparently radiating pattern of these groups of intrusions is not the product of plume-related uplift as defined in Ernst *et al.* (1995). Thus, interpretation of intrusions as radiating swarms and their use in supporting mantle plumes must be evaluated on an individual basis.

Conclusions

- 1) Abundant Middle Devonian–Mississippian sills occur in the subsurface of eastern Svalbard.
- 2) These sills probably intruded along extensional fractures in reactivated–overprinted portions of a major late Neoproterozoic (Timanian) thrust system, the Kongsfjorden–Cowanodden fault zone, during late–post-Caledonian, collapse-related extension.
- 3) Middle Devonian–Mississippian intrusions in Svalbard show affinities with and were likely emplaced in a similar extensional setting as ultramafic–mafic intrusions in northwestern Russia, as suggested by kimberlitic accessory minerals and the chemical composition of chromium spinel in Upper Triassic sedimentary rocks in eastern Svalbard.
- 4) The Middle Devonian–Mississippian ultramafic–mafic intrusions in Svalbard may represent part of a vast regional magmatic province that extends from the Ural Mountains in the east to Svalbard in the northwest, and possibly to the Pripyat–Dnieper–Donets Rift in the southwest.
- 5) This study suggests that the radiating patterns of ultramafic–mafic dyke swarms in late–post-orogenic extensional provinces, rifts, and Large Igneous Provinces can be controlled by inherited orogenic structures and are therefore not necessarily the product of plume-related uplift.

Data availability statement

The data is public (CC-0) and may be accessed from the Norwegian National Data Repository for Petroleum Data (DISKOS repository) by contacting the Norwegian Offshore Directorate by email at <https://www.sodir.no/en/diskos/>.

Acknowledgements

The authors thank the Norwegian Offshore Directorate for access and permission to publish seismic data in Svalbard.

References

- Aakvik R: **Fasies analyse av Undre Karbonske kullførende sedimenter, Billefjorden, Spitsbergen.** Ph.D. Thesis, University of Bergen, Bergen, Norway, 1981; 219.
- Abramovitz T, Landes M, Thybo H, *et al.*: **Crustal velocity structure across the Tornquist and Iapetus Suture Zones—a comparison based on MONA LISA and VARNET data.** *Tectonophysics.* 1999; **314**(1–3): 69–82.
[Publisher Full Text](#)
- Amante C, Eakins BW: **ETOPO1 1 Arc-Minute Global Relief Model: procedures, data sources and analysis.** NOAA Technical Memorandum NESDIS NGDC-24, National Geophysical Data Center, NOAA, 2009; [access date: 2024.06.27].
[Reference Source](#)
- Amundsen HEF, Griffin WL, O'Reilly SY: **The lower crust and upper mantle beneath northwestern Spitsbergen: evidence from xenoliths and geophysics.** *Tectonophysics.* 1987; **139**(3–4): 169–185.
[Publisher Full Text](#)
- Andresen A, Haremo P, Swensson E, *et al.*: **Structural geology around the southern termination of the Lomfjorden Fault Complex, Agardhdalen, East Spitsbergen.** *Norsk Geol Tidsskr.* 1992; **72**: 83–91.
[Reference Source](#)
- Anell J, Braathen A, Olaussen S: **Regional constraints of the Sørkapp Basin: a Carboniferous relic or a Cretaceous depression?** *Mar Pet Geol.* 2014; **54**: 123–138.
[Publisher Full Text](#)
- Anell J, Indrevær K, Saerck CS: **Influence of structural highs on Triassic deposition on the western Barents Shelf.** *Geological Society, London, Special Publications*, 2019; **495**: 29–41.
[Publisher Full Text](#)
- Augland LE, Ryabov VV, Vernikovsky VA, *et al.*: **The main pulse of the Siberian Traps expanded in size and composition.** *Sci Rep.* 2019; **9**(1): 18723.
[PubMed Abstract](#) | [Publisher Full Text](#) | [Free Full Text](#)
- Babin GA, Vladimirov AG, Kruk N, *et al.*: **Age of the initiation of Minusa Basins, Southern Siberia.** *Doklady Earth Sciences.* 2004; **395**(3): 307–310.
[Reference Source](#)
- Baturin D, Fedukhina T, Savostin L, *et al.*: **A geophysical survey of the Spitsbergen margin and surrounding areas.** *Mar Geophys Res.* 1991; **16**: 463–484.
[Publisher Full Text](#)
- Beach A: **The geometry of en-echelon vein arrays.** *Tectonophysics.* 1975; **28**(4): 245–263.
[Publisher Full Text](#)
- Belka Z, Valverde-Vaquero P, Dörr W, *et al.*: **Accretion of first Gondwana-derived terranes at the margin of Baltica.** Palaeozoic Amalgamation of Central Europe, edited by: Winchester, J. A., Pharaoh, T. C. and Verniers, *J Geological Society, London, Special Publications*, 2003; **201**: 19–36.
[Publisher Full Text](#)
- Bergh SG, Andresen A: **Structural development of the tertiary fold-and-thrust belt in east Oscar II Land, Spitsbergen.** *Polar Res.* 1990; **8**(2): 217–236.
[Publisher Full Text](#)
- Bergh SG, Maher Jr, HD, Braathen A: **Tertiary divergent thrust directions from partitioned transpression, Brøggerhalvøya, Spitsbergen.** *Norsk Geol Tidsskr.* 2000; **80**(2): 63–82.
[Publisher Full Text](#)
- Bernard-Griffiths J, Peucat JJ, Ohta Y: **Age and nature of protoliths in the Caledonian blueschist–eclogite complex of western Spitsbergen: a combined approach using U–Pb, Sm–Nd and REE whole-rock systems.** *Lithos.* 1993; **30**(1): 81–90.
[Publisher Full Text](#)
- Berry CM, Marshall JEA: **Lycopoid forests in the early Late Devonian paleoequatorial zone of Svalbard.** *Geology.* 2015; **43**(12): 1043–1046.
[Publisher Full Text](#)
- Birkenmajer K: **Tertiary history of Spitsbergen and continental drift.** *Acta Geol Pol.* 1972; **22**(2): 193–218.
[Reference Source](#)
- Birkenmajer K: **Caledonides of Svalbard and Plate Tectonics.** *Bull Geol Soc Denmark.* 1975; **24**: 1–19.
[Reference Source](#)
- Birkenmajer K: **Tertiary tectonic deformation of lower cretaceous dolerite dykes in a Precambrian terrane, South-West Spitsbergen.** *Studia Geologica Polonica.* 1986; **89**: 31–44.
- Birkenmajer K: **Caledonian basement in NW Wedel Jarlsberg Land south of Bellsund, Spitsbergen.** *Pol Polar Res.* 2004; **25**(1): 3–26.
[Reference Source](#)
- Birkenmajer K, Krajewski KP, Pecskay Z, *et al.*: **K–Ar dating of basic intrusions at Bellsund, Spitsbergen, Svalbard.** *Polish Polar Research.* 2010; **31**(1): 3–16.
[Reference Source](#)
- Birkenmajer K, Morawski T: **Dolerite intrusions of Wedel-Jarlsberg Land Vestspitsbergen.** *Studia Geologica Polonica.* 1960; **4**: 103–123.
- Blomeier D, Wisshak M, Joachimski M, *et al.*: **Calcareous, alluvial and lacustrine deposits in the old red sandstone of central north Spitsbergen (Wood Bay Formation, Early Devonian).** *Norw J Geol.* 2003; **83**(4): 281–298.
[Reference Source](#)
- Braathen A, Bælum K, Maher HD Jr, *et al.*: **Growth of extensional faults and folds during deposition of an evaporite-dominated half-graben basin; the Carboniferous Billefjorden Trough, Svalbard.** *Norsk Geol Tidsskr.* 2011; **91**: 137–160.
[Reference Source](#)
- Braathen A, Ganerød M, Maher H Jr, *et al.*: **Devonian extensional tectonics in Svalbard; Raudfjorden's synclinal basin above the Keisarhjelmen detachment.** 34th Nordic Geological Winter Meeting, January 8th– 10th 2020, Oslo, Norway, 2022.
- Braathen A, Osmundsen PT, Maher H, *et al.*: **The Keisarhjelmen detachment records silurian-devonian extensional collapse in Northern Svalbard.** *Terra Nova.* 2018; **30**(1): 34–39.
[Publisher Full Text](#)
- Bro EG, Shvarts VH: **Processing results from drill hole Raddedalen-1, Edge Island, Spitzbergen Archipelago, All-Russian Research Institute for Geology and Mineral Resources of the World Ocean, St. Petersburg, Pangaea, Report 5750.** 1983.
[Publisher Full Text](#)
- Broussolle A, Sun M, Schulmann K, *et al.*: **Are the Chinese Altai “terranes” the result of juxtaposition of different crustal levels during Late Devonian and Permian orogenesis.** *Gondwana Res.* 2019; **66**: 183–206.
[Publisher Full Text](#)
- Bue EP, Andresen A: **Constraining depositional models in the Barents Sea region using detrital zircon U–Pb data from Mesozoic sediments in Svalbard.** In: *Sediment Provenance Studies in Hydrocarbon Exploration and Production*, edited by: Scott, R. A., Smyth, H. R., Morton, A. C. and Richardson, N., *Geological Society, London, Spec. Publi.* 2014; **386**: 261–279.
[Publisher Full Text](#)
- Bugge T, Mangerud G, Elvebakk G, *et al.*: **The Upper Palaeozoic succession on the Finnmark Platform, Barents Sea.** *Norsk Geol Tidsskr.* 1995; **75**: 3–30.
[Reference Source](#)
- Burke K, Torsvik TH: **Derivation of Large Igneous Provinces of the past 200 million years from long-term heterogeneities in the deep mantle.** *Earth Planet Sci Lett.* 2004; **227**(3–4): 531–538.
[Publisher Full Text](#)
- Burov YuP: **Peridotite inclusions and bombs in the trachybasalts of Sverre Volcano in Vestspitsbergen, National Lending Library for Science and Technology, Boston Spa Yorkshire, England.** 1965; 268–279.
- Burov YuP, Krasil'scikov AA, *et al.*: **The age of Spitsbergen Dolerites (from isotopic dating).** *Norsk Polarinstittut Årbok.* 1975, 1977; 101–108.
[Reference Source](#)
- Chekunov AV, Garvish VK, Kutas RI, *et al.*: **Dnieper–Donets palaeorift.** *Tectonophysics.* 1992; **208**(1–3): 257–272.
[Publisher Full Text](#)
- Corfu F, Polteau S, Planke S, *et al.*: **U–Pb geochronology of cretaceous magmatism on Svalbard and Franz Josef Land, Barents Sea Large Igneous Province.** *Geol Mag.* 2013; **150**(6): 1127–1135.
[Publisher Full Text](#)
- Cotte N, Pedersen HA; TOR Working Group: **Sharp contrast in lithospheric structure across the Sorgenfrei–Tornquist Zone as inferred by Rayleigh wave analysis of TOR1 project data.** *Tectonophysics.* 2002; **360**(1–4): 75–88.
[Publisher Full Text](#)
- Courtillot V, Kravchinsky VA, Quidelleur X, *et al.*: **Preliminary dating of the Vilyui traps (Eastern Siberia): Eruption at the time of Late Devonian extinction events?** *EPSL.* 2010; **300**(3–4): 239–245.
[Publisher Full Text](#)
- Coward MP: **The Precambrian, Caledonian and Variscan framework to NW Europe.** In: *Tectonic Events Responsible for Britain's Oil and Gas Reserves*, edited by: Hardman, R. F. P. and Brooks, J., *Geological Society, London, Special Publications*, 1990; **55**: 1–34.
[Publisher Full Text](#)
- Cutbill JL, Challinor A: **Revision of the stratigraphical scheme for the Carboniferous and Permian of Spitsbergen and Bjørnøya.** *Geol Mag.* 1965; **102**(5): 418–439.
[Publisher Full Text](#)
- Cutbill JL, Henderson WG, Wright NJR: **The Billefjorden Group (Early Carboniferous) of central Spitsbergen.** *Norsk Polarinst Skr.* 1976; **164**: 57–89.
[Reference Source](#)
- Dalhoff F, Stemmerik L: **Depositional history of the fluvial Lower Carboniferous Sortebakker Formation, Wandel Sea Basin, Eastern North Greenland.** *Geology of Greenland Survey Bulletin.* 2000; **187**: 65–77.
[Publisher Full Text](#)
- Dalhoff F, Vigran JO, Stemmerik L: **Stratigraphy and palynology of the Lower Carboniferous Sortebakker Formation, Wandel Sea Basin, eastern North Greenland.** *Geology of Greenland Survey Bulletin.* 2000; **187**: 51–63.
[Publisher Full Text](#)

- Dallmann WK: **The structure of the Berzeliustinden area: evidence for thrust wedge tectonics in the Tertiary fold-and-thrust belt in Spitsbergen.** *Polar Res.* 1988; **6**(2): 141–154.
[Publisher Full Text](#)
- Dallmann WK: **Notes on the stratigraphy, extent and tectonic implications of the Minkinfjellet Basin, Middle Carboniferous of central Spitsbergen.** *Polar Res.* 1993; **12**(2): 153–160.
[Publisher Full Text](#)
- Dallmann WK: **Geoscience Atlas of Svalbard.** Norsk Polarinstitut, Tromsø, Norway, Rapportserie nr. **148.** 2015.
[Reference Source](#)
- Dallmann WK, Andresen A, Bergh SG, *et al.*: **Tertiary fold-and-thrust belt of Spitsbergen Svalbard.** *Norsk Polarinstitut Meddelelser.* 1993; **128**: 51.
- Dallmann WK, Dypvik H, Gjelberg JG, *et al.*: **Lithostratigraphic Lexicon of Svalbard.** Norwegian Polar Institute, Polar Environmental Centre, Tromsø, Norway, 1999; 322.
[Reference Source](#)
- Dallmann WK, Elvevold S, Piepjohn K, *et al.*: **Geological map of Svalbard 1:100.000, sheet C5G, Åsgardfonna.** Norwegian Polar institute, Temakart 46, 2010.
- Dallmann WK, Maher HD Jr: **The Supanberget area – basement imbrication and detached foreland thrusting in the Tertiary fold-and-thrust belt.** *Svalbard Polar Res.* 1989; **7**(2): 95–107.
- Dallmann WK, Ohta Y, Piepjohn K, *et al.*: **Geological map of Svalbard 1:100.000, sheet B6G, Eidsvollfjellet.** Norwegian Polar institute, Temakart 39, 2006.
- Dallmann WK, Piepjohn K: **The structure of the Old Red Sandstone and the Svalbardian Orogenic Event (Ellesmerian Orogeny) in Svalbard.** *Norg Geol Unders B Spec Publi.* 2020; **15**: 106.
- Dallmann WK, Piepjohn K, Blomeier D, *et al.*: **Geological map Svalbard 1:100000, sheet C8G, Billefjorden.** Norsk Polarinstitut Temakart 43, 2009.
- Dallmann WK, Piepjohn K, McCann A, *et al.*: **Geological map of Svalbard 1:100.000, sheet B5G, Woodfjorden.** Norwegian Polar institute, Temakart 37, 2005.
- Dallmeyer RD, Peucat JJ, Hirajima T, *et al.*: **Tectonothermal chronology within a blueschist-eclogite complex, west-central Spitsbergen, Svalbard: Evidence from ⁴⁰Ar/³⁹Ar and Rb-Sr mineral ages.** *Lithos.* 1990; **24**(4): 291–304.
[Publisher Full Text](#)
- Danukalova MK, Kuzmichev AB, Aristov VA: **Upper devonian depositional system of Bel'kov Island (New Siberian Islands): an intracontinental rift or a continental margin?** *Geotecton.* 2014; **48**(5): 390–412.
[Publisher Full Text](#)
- Dare MS, Tarduno JA, Bono RK, *et al.*: **Detrital magnetite and chromite in Jack Hills quartzite cobbles: further evidence for the preservation of primary magnetizations and new insights into sediment provenance.** *Earth Planet Sci Lett.* 2016; **451**: 298–314.
[Publisher Full Text](#)
- Didenko AN, Vodovozov VY, Pisarevsky SA, *et al.*: **Palaeomagnetism and U-Pb dates of the Palaeoproterozoic Akitkan group (South Siberia) and implications for pre-Neoproterozoic tectonics.** In: *Palaeoproterozoic Supercontinents and Global Evolution*, edited by: Reddy, S. M., Mazumder, R., Evans, D. A. D. and Collins, A. S., *Geol Soc Spec Publ.* 2009; **323**: 145–163.
[Publisher Full Text](#)
- Donskaya TV: **Assembly of the Siberian Craton: constraints from Paleoproterozoic granitoids.** *Precambrian Res.* 2020; **348**: 105869.
[Publisher Full Text](#)
- Donskaya TV, Gladkochub DP, Pisarevsky SA, *et al.*: **Discovery of archaean crust within the Akitkan orogenic belt of the Siberian craton: new insight into its architecture and history.** *Precambrian Res.* 2009; **170**(1–2): 61–72.
[Publisher Full Text](#)
- Downes H, Balaganskaya E, Beard AD, *et al.*: **Petrogenetic processes in the ultramafic, alkaline and carbonatitic magmatism in the Kola Alkaline Province: a review.** *Lithos.* 2005; **85**(1–4): 48–75.
[Publisher Full Text](#)
- Dumais MA, Brönnner M: **Revisiting Austfonna, Svalbard, with potential field methods - a new characterization of the bed topography and its physical properties.** *Cryosphere.* 2020; **14**(1): 183–197.
[Publisher Full Text](#)
- Eide JR, Ree R, Rockman PO: **Final well report - 7816/12-1 July 1991.** Norsk Hydro A.S., Harstad, Norway, 1991; 121.
- Enga J: **Paleosols in the Triassic De Geerdalen and Snadd formations.** Master's Thesis, Norwegian University of Science and Technology, Trondheim, Norway, 2015.
[Reference Source](#)
- Ernst RE: **Large igneous provinces.** Cambridge University Press, Cambridge, UK, 2014; 1–653.
[Publisher Full Text](#)
- Ernst RE, Buchan KL: **Giant radiating dyke swarms: their use in identifying pre-mesozoic large igneous provinces and mantle plumes.** In: *Large Igneous Provinces: Continental, Oceanic, and Planetary Flood Volcanism*, edited by: Mahoney, J. J. and Coffin, M. F., *Geophysical Monograph Series.* 1997; **100**: 297–333.
[Publisher Full Text](#)
- Ernst RE, Head JW, Parfitt E, *et al.*: **Giant radiating dyke swarms on Earth and Venus.** *Earth Sci Rev.* 1995; **39**(1–2): 1–58.
[Publisher Full Text](#)
- Ernst RE, Liikane DA, Jowitt SM, *et al.*: **A new plumbing system framework for mantle plume-related continental large igneous provinces and their mafic-ultramafic intrusions.** *Journal of Volcanology and Geothermal Research.* 2019; **384**: 75–84.
[Publisher Full Text](#)
- Ernst RE, Rodygin SA, Grinev OM: **Age correlation of large igneous provinces with Devonian biotic crises.** *Glob Planet Change.* 2020; **185**: 103097.
[Publisher Full Text](#)
- Ershova VB, Khudoley AK, Prokoviev AV: **Early visean paleogeography of northern Siberia: new evidence of rift to draft transition along the eastern margin of Siberia.** *J Asian Earth Sci.* 2014; **91**: 206–217.
[Publisher Full Text](#)
- Estrada S, Mende K, Gerdes A, *et al.*: **Proterozoic to cretaceous evolution of the western and central Pearya Terrane (Canadian High Arctic).** *J Geodyn.* 2018; **120**: 45–76.
[Publisher Full Text](#)
- Evdokimov AN, Burnaeva MY, Radina ES, *et al.*: **The first find of kimberlitic accessory minerals in mafic-ultramafic dikes in Spitsbergen.** *Dokl Earth Sc.* 2006; **407**(1): 275–279.
[Publisher Full Text](#)
- Faehrich K, Majka J, Schneider D, *et al.*: **Geochronological constraints on Caledonian strike-slip displacement in Svalbard, with implications for the evolution of the Arctic.** *Terra Nova.* 2020; **32**(4): 290–299.
[Publisher Full Text](#)
- Filatova NI, Khain VE: **Development of the Verkhoyansk-Kolyma orogenic system as a result of interaction of adjacent continental and Oceanic plates.** *Geotecton.* 2008; **42**(4): 258–285.
[Publisher Full Text](#)
- Flood B, Gee DG, Hjelle A, *et al.*: **The geology of Nordaustlandet, northern and central parts.** *Norsk Polarinst Skr.* 1969; **146**: 1–145.
[Reference Source](#)
- Foulger GR, Nikichin AM, Aleshina KF, *et al.*: **The remarkable parallels between the North East Atlantic and Arctic regions.** *Tectonophysics.* 2024; **880**: 230317.
[Publisher Full Text](#)
- Frebold H: **Geologie von Spitzbergen, der Bäreninsel, des König Karl- und Franz-Joseph-Landes.** Gebrüder Borntraeger, Germany, 1935; 1–195.
[Reference Source](#)
- Friend PF, Heintz N, Moody-Stuart M: **New unit terms for the Devonian of Spitsbergen and a new stratigraphical scheme for the wood bay formation.** *Polarinst. Årbok,* 1965, 1966; 59–64.
- Friend PF, Moody-Stuart M: **Sedimentation of the wood bay formation (Devonian) of Spitsbergen: regional analysis of a late orogenic basin.** *Norsk Polarinst Skr.* 1972; **157**: 80.
[Reference Source](#)
- Gayer RA, Gee DG, Harland WB, *et al.*: **Radiometric age determinations on rocks from Spitsbergen.** *Norsk Polarinstitut Skriftr.* 1966; **137**: 43.
[Reference Source](#)
- Gee DG, Björklund L, Stølen LK: **Early Proterozoic basement in Ny Friesland-implications for the Caledonian tectonics of Svalbard.** *Tectonophys.* 1994; **231**(1–3): 171–182.
[Publisher Full Text](#)
- Gernigon L, Brönnner M, Dumais MA, *et al.*: **Basement inheritance and salt structures in the SE Barents Sea: insights from new potential field data.** *J Geodyn.* 2018; **119**: 82–106.
[Publisher Full Text](#)
- Gilmullina A, Klausen TG, Paterson NW, *et al.*: **Regional correlation and seismic stratigraphy of Triassic Strata in the Greater Barents Sea: implications for sediment transport in Arctic basins.** *Basin Res.* 2021; **33**(2): 1546–1579.
[Publisher Full Text](#)
- Gjelberg JG: **Upper Devonian (Famennian) – Middle Carboniferous succession of Bjørnøya, a study of ancient alluvial and coastal marine sedimentation.** *Norsk Polarinst Skr.* 1981; **174**: 67.
[Reference Source](#)
- Gjelberg JG: **Early-Middle Carboniferous sedimentation on Svalbard. A study of ancient alluvial and coastal marine sedimentation in rift- and strike-slip basins.** Ph.D. thesis, University of Bergen, Bergen, Norway, 1984; 306.
[Reference Source](#)
- Gjelberg JG, Steel RJ: **An outline of Lower-Middle carboniferous sedimentation on Svalbard: effects of tectonic, climatic and sea level changes in rift basin sequences.** In: *Geology of the North Atlantic Borderlands*, edited by: Kerr, J.W. and Ferguson, A. J., *Can Soc Of Petrol Geol Mem.* 1981; **7**: 543–561.
[Reference Source](#)
- Gjelsvik T: **Remarks on the structure and composition of the Sverrefjellet volcano, Bockfjorden, Vestspitsbergen.** *Norsk Polarinstitut Årbok.* 1963; **1962**: 50–54.
- Graversen O: **Structural analysis of superosed fault systems of the Bornholm horst block, Tornquist Zone, Denmark.** *Bull Geol Soc Denmark.* 2009; **57**: 25–49.
[Publisher Full Text](#)

- Griffin WL, Fisher NI, Friedman JH, *et al.*: **Statistical techniques for the classification of chromites in diamond exploration samples.** *J Geochem Explor.* 1997; **59**(3): 233–249.
[Publisher Full Text](#)
- Griffin WL, Nikolic N, O'Reilly SY, *et al.*: **Coupling, decoupling and metasomatism: evolution of crust–mantle relationships beneath NW Spitsbergen.** *Lithos.* 2012; **149**: 115–135.
[Publisher Full Text](#)
- Grogan P, Nyberg K, Fotland B, *et al.*: **Cretaceous magmatism south and east of Svalbard: evidence from seismic reflection and magnetic data.** *Polarforschung.* 2000; **68**(1): 25–34.
[Publisher Full Text](#)
- Guise PG, Roberts D: **Devonian ages from ⁴⁰Ar/³⁹Ar dating of plagioclase in dolerite dykes, eastern Varanger Peninsula, North Norway.** *Norges geologiske undersøkelse.* 2002; **440**: 27–37.
[Reference Source](#)
- Gusev NI, Sergeevam LY, Skublov SG: **Evidence of subduction of the paleoproterozoic oceanic crust in the khapchan belt of the anabar shield, Siberian craton.** *Petrology.* 2021; **29**(2): 95–113.
[Publisher Full Text](#)
- Hamilton MA, Sobolev NV, Stern RA, *et al.*: **SHRIMP U-Pb dating of a perovskite inclusion in diamond: evidence for a syneruption age for diamond formation, Sytykanskaya kimberlite pipe, Yakutia region, Siberia.** 8th International Kimberlite Conference, 22nd–27th June 2023, Victoria, British Columbia, Canada, Extended Abstracts, 2004; **8**: 1–4.
[Publisher Full Text](#)
- Hansen HE, Amundsen HEF, Snow JE, *et al.*: **A comparison of peridotites from the Molloy Deep and the Gakkle Ridge with mantle xenolites from Spitsbergen.** EGS–AGU–EUG Joint Assembly, 6th–11th April 2003, Nice, France, 2003; 13638.
[Reference Source](#)
- Haremo P, Andresen A: **Tertiary décollements thrusting and inversion structures along Billefjorden and Lomfjorden Fault Zones, East Central Spitsbergen.** In: *Structural and Tectonic Modelling and its Application to Petroleum Geology.* edited by: Larsen, R. M., Brekke, H., Larsen, B. T. and Talleraas, E., Norwegian Petroleum Society (NPF) Special Publications, 1992; **1**: 481–494.
[Publisher Full Text](#)
- Harland WB: **Contribution of Spitsbergen to understanding of tectonic evolution of North Atlantic region.** AAPG Memoirs, 1969; **12**: 817–851.
[Publisher Full Text](#)
- Harland WB, Cutbill LJ, Friend PF, *et al.*: **The Billefjorden fault zone, Spitsbergen – the long history of a major tectonic lineament.** *Norsk Polarinst Skr.* 1974; **161**: 1–72.
[Reference Source](#)
- Harland WB, Kelly SRA: **Eastern Svalbard platform.** In: *Geology of Svalbard.* edited by: Harland, W. B., Geol Soc London Mem. 1997; **17**: 521.
[Publisher Full Text](#)
- Harland WB, Scott RA, Auckland KA, *et al.*: **The ny Friesland orogen, Spitsbergen.** *Geol Mag.* 1992; **129**(6): 679–708.
[Publisher Full Text](#)
- Haugaaard R, Waterton P, Ootes L, *et al.*: **Detrital chromites reveal slave craton's missing komatiite.** *Geology.* 2021; **49**(9): 1079–1083.
[Publisher Full Text](#)
- Hawkesworth C, Schersten A: **Mantle plumes and geochemistry.** *Chem Geol.* 2007; **241**(3–4): 319–331.
[Publisher Full Text](#)
- Hossein Shomali Z, Roberts RG, Pedersen LB, *et al.*: **Lithospheric structure of the Torquist Zone resolved by nonlinear P and S teleseismic tomography along the TOR array.** *Tectonophysics.* 2006; **416**(1–4): 133–149.
[Publisher Full Text](#)
- Indrevær K, Gabrielsen RH, Faleide JJ: **Early Cretaceous synrift uplift and tectonic inversion in the Loppa High area, southwestern Barents Sea, Norwegian shelf.** *J Geol Soc.* London, 2017; **174**(2): 242–254.
[Publisher Full Text](#)
- Ivanov AV: **Why volatiles are required for cratonic flood basalt volcanism: two examples from the Siberian craton.** In: *The Interdisciplinary Earth: A Volume in Honor of Don L. Anderson.* edited by: Foulger, G. R., Lustrino, M., and King, S. D., Geological Society of America Special Paper, 2015; **514**: 325–338.
[Publisher Full Text](#)
- Jackson KC, Halls HC: **Tectonic implications of paleomagnetic data from sills and dykes in the Sverdrup basin, Canadian Arctic.** *Tectonics.* 1988; **7**(3): 463–481.
[Publisher Full Text](#)
- Jakobsson M, Mayer L, Coackley B, *et al.*: **The International Bathymetric Chart of the Arctic Ocean (IBCAO) Version 3.0.** *Geophys Res Lett.* 2012; **39**(12): L12609.
[Publisher Full Text](#)
- Johansen SA: **Depositional environments of the upper triassic snadd formation on the loppa high, SW Barents Sea.** Master's Thesis, UiT The Arctic University of Norway in Tromsø, Tromsø, Norway, 2016; 1–83.
[Reference Source](#)
- Johansson Å, Gee DG, Larionov AN, *et al.*: **Greenvillian and caledonian evolution of eastern Svalbard - a tale of two orogenies.** *Terra Nova.* 2005; **17**(4): 317–325.
[Publisher Full Text](#)
- Johansson AE, Larionov A, Gee DG, *et al.*: **Greenvillian and Caledonian tectono-magmatic activity in northeasternmost Svalbard.** In: *The Neoproterozoic Timanide Orogen of Eastern Baltica.* edited by: Gee, D. G. and Pease, V., Geol Soc London Memoirs. 2004; **30**(1): 207–232.
[Publisher Full Text](#)
- Kargin AV, Nosova AA, Sazonova LV, *et al.*: **Ultramafic alkaline rocks of Kepino cluster, Arkhangelsk, Russia: different evolution of kimberlite melts in sills and pipes.** *Minerals.* 2021; **11**(5): 540.
[Publisher Full Text](#)
- Kingsbury CG, Ernst RE, Cousens BL, *et al.*: **The high arctic LIP in Canada: trace element and Sm-Nd isotopic evidence for the role of mantle heterogeneity and crustal assimilation.** *Norwegian Journal of Geology.* 2016; **96**(2): 97–118.
[Publisher Full Text](#)
- Kiselev AI, Ernst RE, Yarmolyuk VV, *et al.*: **Radiating rifts and dyke swarms of the middle Paleozoic Yakutsk plume of eastern Siberian craton.** *J Asian Earth Sci.* 2012; **45**: 1–16.
[Publisher Full Text](#)
- Kiselev AI, Yarmolyuk VV, Egorov KN, *et al.*: **Middle paleozoic basic magmatism of the Northwestern Vilyui rift: composition, sources, and geodynamics.** *Petrology.* 2006; **14**(6): 588–608.
[Publisher Full Text](#)
- Klimenko SS, Anischenko LA, Antoshkina AI: **The timan-pechora sedimentary basin: palaeozoic reef formations and petroleum systems.** In: *Arctic Petroleum Geology.* edited by: Spencer, A. M., Embry, A. F., Gautier, D. L., Stoupakova, A. V. and Sørensen, K., Geological Society, London, Memoirs. 2011; **35**: 223–236.
[Publisher Full Text](#)
- Koehl JBP: **Impact of Timanian thrusts on the Phanerozoic tectonic history of Svalbard.** EGU General Assembly, Keynote presentation, Vienna, Austria, 2020.
[Publisher Full Text](#)
- Koehl JBP: **Early Cenozoic Eurekan strain partitioning and decoupling in central Spitsbergen, Svalbard.** *Solid Earth.* 2021; **12**(5): 1025–1049.
[Publisher Full Text](#)
- Koehl JBP: **The myth of the De Geer Zone [version 1; peer review: 1 approved with reservations, 1 not approved].** *Open Res Eur.* 2024.
[Publisher Full Text](#)
- Koehl JBP, Allaart L, Noormets R: **Devonian-Carboniferous extension and Eurekan inversion along an inherited WNW-ESE-striking fault system in Billefjorden, Svalbard [version 1; peer review: 1 approved, 2 not approved].** *Open Res Eur.* 2023b; **3**: 124.
[PubMed Abstract](#) | [Publisher Full Text](#) | [Free Full Text](#)
- Koehl JBP, Bergh SG, Henningsen T, *et al.*: **Middle to late Devonian—Carboniferous collapse basins on the Finnmark platform and in the southwesternmost Nordkapp basin, SW Barents sea.** *Solid Earth.* 2018; **9**(2): 341–372.
[Publisher Full Text](#)
- Koehl JBP, Bergh SG, Osmundsen PT, *et al.*: **Late Devonian-Carboniferous faulting and controlling structures and fabrics in NW Finnmark.** *Norw J Geol.* 2019; **99**(3): 459–499.
[Publisher Full Text](#)
- Koehl JBP, Christophersen G, Collombin M, *et al.*: **Devonian-Mississippian faulting controlled by WNW-ESE-striking structural grain in Proterozoic basement rocks in Billefjorden, central Spitsbergen.** *Geologica Acta.* 2023a; **21**(7): 1–16.
[Publisher Full Text](#)
- Koehl JBP, Jolley DW, Pease A, *et al.*: **Sub-basalt thrust systems on the Færoe continental shelf and their implications for the late Paleoproterozoic-Cenozoic tectonic evolution of the margin.** *Open Res Eur.* 2024 awaiting peer review.
- Koehl JBP, Magee C, Anell I: **Timanian thrust systems and their implications for late Neoproterozoic-Phanerozoic tectonic evolution of the northern Barents Sea and Svalbard.** *Solid Earth.* 2022a; **13**: 85–115.
- Koehl JBP, Marshall JEA, Lopes GM: **The timing of the Svalbardian Orogeny in Svalbard: a review.** *Solid Earth.* 2022b; **13**(8): 1353–1370.
[Publisher Full Text](#)
- Koehl JBP, Muñoz-Barrera JM: **From widespread Mississippian to localized Pennsylvanian extension in central Spitsbergen, Svalbard.** *Solid Earth.* 2018; **9**(6): 1535–1558.
[Publisher Full Text](#)
- Koehl JBP, Polonio I, Rojo-Moraleda LA: **Timanian fold-and-thrust belt and Caledonian overprint in the selis ridge imaged by new 3D seismic attributes and spectral decomposition.** *Tektonika.* 2023c; **1**(1): 76–100.
[Publisher Full Text](#)
- Koehl JBP, Stokmo EMB: **Caledonian reactivation and reworking of Timanian thrust systems and implications for latest Mesoproterozoic-mid Paleozoic**

- tectonics and magmatism in northern Norway and the southern Barents Sea [version 1; peer review: 1 approved with reservations, 1 not approved]. *Open Res Eur.* 2024.
[Publisher Full Text](#)
- Koehl JBP, Taule C, Collombin M: **Middle Pennsylvanian megabreccia along the Odelfjellet Fault in Billefjorden, central Spitsbergen.** *Norwegian Journal of Geology.* 2023d; **103**(1): 1–24.
[Publisher Full Text](#)
- Kong LZ, Jiang YD, Li PF, *et al.*: **Devonian subduction retreat recorded in the Chinese Altai Orogen: Petro-structural and geochronological constraints from orogenic lower crust migmatite-granite complexes.** *J Asian Earth Sci.* 2023; **244**: 105540.
[Publisher Full Text](#)
- Korago EA, Kovaleva GN, Lopatin BG, *et al.*: **The precambrian rocks of Novaya Zemlya.** In: The Neoproterozoic Timanide Orogen of Eastern Baltica, edited by: Gee, D. G. and Pease, V., *Geol Soc London Mem.* 2004; **30**: 135–143.
[Publisher Full Text](#)
- Košmińska K, Spear FS, Majka J, *et al.*: **Deciphering late Devonian-early Carboniferous P-T path of mylonitized garnet-mica schists from Prins Karls Forland, Svalbard.** *J Metamorph Geol.* 2020; **38**(5): 471–493.
[Publisher Full Text](#)
- Kostyuchenko A, Sapozhnikov R, Egorin A, *et al.*: **Crustal structure and tectonic model of northeastern Baltica, based on deep seismic and potential field data.** In: European Lithosphere Dynamics, edited by: Gee, D. G. and Stephenson, R. A., *Geol Soc London Mem.* 2006; **32**: 521–539.
[Publisher Full Text](#)
- Kramm U, Kogarko LN, Kononova VA, *et al.*: **The kola alkaline province of the CIS and Finland: precise Rb-Sr ages define 380-360 Ma age range for all magmatism.** *Lithos.* 1993; **32**(1): 33–44.
[Publisher Full Text](#)
- Krasil'scikov AA: **Stratigraphy and palaeotectonics of the Precambrian - early Palaeozoic of Spitsbergen [in Russian].** NIIGA Trudy, 1973; **172**.
- Kuzmin MI, Yarmolyuk VV, Kravchinsky VA: **Phanerozoic hot spot traces and palaeogeographic reconstructions of the Siberian continent based on interaction with the African large low shear velocity province.** *Earth Sci Rev.* 2010; **102**(1–2): 29–59.
[Publisher Full Text](#)
- Larionova YO, Sazonova LV, Lebedeva NM, *et al.*: **Kimberlite age in the Arkhangelsk province, Russia: Isotopic geochronologic Rb-Sr and ⁴⁰Ar/³⁹Ar and mineralogical data on phlogopite.** *Petrology.* 2016; **24**(6): 562–593.
[Publisher Full Text](#)
- Larsen GB, Elvebakk G, Henriksen LB, *et al.*: **Upper palaeozoic lithostratigraphy of the Southern part of the Norwegian Barents Sea.** *Norges geol unders Bull.* 2005; **444**: 45.
[Reference Source](#)
- Lehman J, Schulmann K, Lexa O, *et al.*: **Structural constraints on the evolution of the central Asian Orogenic belt in SW Mongolia.** *Am J Sci.* 2010; **310**(7): 575–628.
[Publisher Full Text](#)
- Lindemann FJ, Volohonsky E, Marshall JEA: **A bonebed in the Hørbreen Formation (Famennian-Viséan) on Spitsbergen.** NorskGeologiskForening Abstracts and Proceedings, 1, Winter Meeting, Oslo, 8-10th January, 2013.
- Lippard SJ, Prestvik T: **Permo-Karbonskebasaltgangerpà Magerøya - Noen nye feltobservasjoner og foreløpige petrografiske og geochemiske data.** *Geonytt.* 1995; **22**(1): 1995.
- Lippard SJ, Prestvik T: **Carboniferous dolerite dykes on Magerøy: new age determination and tectonic significance.** *Norsk Geologisk Tidsskrift.* 1997; **77**: 159–163.
[Reference Source](#)
- Lopatin BG, Pavlov LG, Orgo VV, *et al.*: **Tectonic structure of Novaya Zemlya.** *Polarforschung.* 2001; **69**: 131–135.
[Reference Source](#)
- Lord GS, Mørk A, Haugen T, *et al.*: **Stratigraphy and palaeosol profiles of the upper triassic Isfjorden member, Svalbard.** *Norwegian Journal of Geology.* 2022; **102**: 202215.
[Publisher Full Text](#)
- Lorenz H, Pystin AM, Olovyanishnikov VG, *et al.*: **Neoproterozoic high-grade metamorphism of the Kanin Peninsula, Timanide Orogen, northern Russia.** In: The Neoproterozoic Timanide Orogen of Eastern Baltica, edited by: Gee, D. G. and Pease, V., *Geol Soc London Mem.* 2004; **30**: 59–68.
[Publisher Full Text](#)
- Maier HD Jr: **Photointerpretation of tertiary structures in platform cover strata of interior Oscar II Land, Spitsbergen.** *Polar Res.* 1988; **6**(2): 155–172.
[Reference Source](#)
- Maier HD Jr: **Manifestations of the cretaceous high Arctic Large Igneous Province in Svalbard.** *J Geol.* 2001; **109**(1): 91–104.
[Publisher Full Text](#)
- Maier H, Braathen A, Ganerød M, *et al.*: **Core complex fault rocks of the Silurian to Devonian Keisarhjelmen detachment in NW Spitsbergen.** In: New Developments in the Appalachians-Caledonian-Variscan Orogen, edited by: Kuiper, Y. D., Murphy, J. B., Nance, R. D., Strachan, R. A. and Thompson, M. D., *GSA Spec Paper.* 2022; **54**: 265–286.
[Publisher Full Text](#)
- Maier HD Jr, Craddock C, Maier K: **Kinematics of tertiary structures in upper Paleozoic and Mesozoic strata on Midterhuken, west Spitsbergen.** *Geol Soc Am Bull.* 1986; **97**(12): 1411–1421.
[Publisher Full Text](#)
- Mahotkin IL, Gibson SA, Thompson RN, *et al.*: **Manifestations of the cretaceous high Arctic large igneous province in Svalbard.** *J Petrol.* 2000; **41**(2): 201–227.
[Publisher Full Text](#)
- Majka J, Mazur S, Manecki M, *et al.*: **Late Neoproterozoic amphibolite-facies metamorphism of a pre-caledonian basement block in Southwest Wedel Jarlsberg Land, Spitsbergen: new evidence from U-Th-Pb dating of monazite.** *Geol Mag.* 2008; **145**(6): 822–830.
[Publisher Full Text](#)
- Malkovets VG, Litasov YuD, Travin AV, *et al.*: **Volcanic pipes as clues to upper mantle petrogenesis: mesozoic Ar-Ar dating of the Minusinsk basalts, South Siberia.** *Int Geol Rev.* 2003; **45**(2): 133–142.
[Publisher Full Text](#)
- Manby GM: **Mid-Palaeozoic metamorphism and polyphase deformation of the forland complex, Svalbard.** *Geol Mag.* 1986; **123**(6): 651–663.
[Publisher Full Text](#)
- Mark NJ, Schofield N, Pugliese S, *et al.*: **Igneous intrusions in the Faroe Shetland Basin and their implications for hydrocarbon exploration; new insights from well and seismic data.** *Mar Pet Geol.* 2018; **92**: 733–753.
[Publisher Full Text](#)
- Marshall J, Lindemann FJ, Finney S, *et al.*: **A Mid Famennian (Late Devonian) spore assemblage from Svalbard and its significance.** CIMP Meeting, Bergen, Norway, 17–18th September, 2015.
- McCann AJ, Dallmann WK: **Reactivation of the long-lived Billefjorden fault zone in north central Spitsbergen, Svalbard.** *Geol Mag.* 1996; **133**(1): 63–84.
[Publisher Full Text](#)
- McLaren P, Bowles D: **The effects of sediment transport on grain-size distributions.** *J Sediment Petrol.* 1985; **55**(4): 457–470.
[Publisher Full Text](#)
- Michalski K, Manby G, Nejbort K, *et al.*: **Using palaeomagnetism and isotopic data to investigate late to post-caledonian tectonothermal processes within the Western Terrane of Svalbard.** *J Geol Soc London.* 2017; **174**: 572–590.
[Publisher Full Text](#)
- Minakov A, Yarushina V, Faleide JJ, *et al.*: **Dyke emplacement and crustal structure within a continental large igneous province, Northern Barents Sea.** In: *Circum-Arctic Lithosphere Evolution.* Edited by: Pease, V. and Coakley, B., Geological Society, London, Special Publications, 2017; **460**(1): 1–25.
[Publisher Full Text](#)
- Narkiewicz M, Maksym A, Malinowski M, *et al.*: **Transcurrent nature of the teisseyre-tornquist zone in central Europe: results of the POLCRUST-01 deep reflection seismic profile.** *Int J Earth Sci.* 2015; **104**: 775–796.
[Publisher Full Text](#)
- Narkiewicz M, Petecki Z: **Basement structure of the paleozoic platform in Poland.** *Geological Quarterly.* 2017; **61**(2): 502–520.
[Publisher Full Text](#)
- Nasuti A, Roberts D, Gernigon L: **Multiphase mafic dykes in the caledonides of northern Finnmark revealed by a new high-resolution aeromagnetic dataset.** *Norwegian Journal of Geology.* 2015; **95**(3,4): 251–263.
[Publisher Full Text](#)
- Nejbort K, Krajewski KP, Dubinska E, *et al.*: **Dolerites of Svalbard, North-West Barents sea shelf: age tectonic setting and significance for geotectonic interpretation of the high-Arctic large igneous province.** *Polar Res.* 2011; **30**(1): 7306.
[Publisher Full Text](#)
- Newman MJ, Burrow CJ, den Blaauwen JL: **The Givetian vertebrate fauna from the Fiskekløfta Member (Mimerdalen Subgroup), Svalbard. Part I. Stratigraphic and faunal review. Part II. Acanthodii.** *Norw J Geol.* 2019; **99**(1): 1–16.
[Publisher Full Text](#)
- Newman MJ, Burrow CJ, den Blaauwen JL: **A new species of ischnacanthiform acanthodian from the Givetian of Mimerdalen, Svalbard.** *Norw J Geol.* 2020; **99**(4): 619–631.
[Reference Source](#)
- Newman MJ, Burrow CJ, den Blaauwen JL, *et al.*: **A new actinopterygian *Cheirolepis jonesi* nov. sp. from the Givetian of Spitsbergen, Svalbard.** *Norw J Geol.* 2021; **101**(1): 202103.
[Publisher Full Text](#)
- Nikishin AM, Ziegler PA, Stephenson RA, *et al.*: **Late precambrian to triassic history of the East European Craton: dynamics of sedimentary basin evolution.** *Tectonophysics.* 1996; **268**(1–4): 23–63.
[Publisher Full Text](#)
- Norsk Hydro: **Final Report well 7120/2-1, License 109, April 1986.** Norwegian Offshore Directorate, Factpages, 1986.
[Reference Source](#)
- Ohta Y: **Lithostratigraphy of the Hecla Hoek rocks in central Nordaustlandet and their relationships to the Caledonian granitic-migmatitic rocks.** In: *Hecla Hoek rocks in central and western Nordaustlandet.* Edited by: Ohta Y, Norsk Polarinstittut Skrifter, 1982; **178**: 41–60.

- O'Leary N, White N, Tull S, *et al.*: **Evolution of the timan-pechora and South Barents sea basins.** *Geol Mag.* 2004; **141**(2): 141–160.
[Publisher Full Text](#)
- Olovyanishnikov VG, Roberts D, Siedlecka A: **Tectonics and sedimentation of the meso- to neoproterozoic timan-varanger belt along the Northeastern margin of Baltica.** *Polarforschung.* 2000; **68**(1): 267–274.
[Reference Source](#)
- Parker JR: **Folding, faulting and dolerite intrusions in the Mesozoic rocks of the fault zone of central Vestspitsbergen.** *Norsk Polarinstitutt Årbok.* 1966; **1964**: 47–56.
- Paterson NW, Mangerud G: **Late Triassic (Carnian - Rhaetian) palynology of Hopen, Svalbard.** *Rev Palaeobot Palynol.* 2015; **220**: 98–119.
[Publisher Full Text](#)
- Pease V, Scarrow JH, Silva IGN, *et al.*: **Devonian magmatism in the Timan Range, Arctic Russia — subduction, post-orogenic extension, or rifting?** *Tectonophysics.* 2016; **691**(Part A): 185–197.
[Publisher Full Text](#)
- Pegrum RM: **The extension of the Tornquist Zone in the Norwegian North Sea.** *Norsk Geologisk Tidsskrift.* 1984; **64**(4): 39–68.
- Phillips TB, Jackson CAL, Bell RE, *et al.*: **Oblique reactivation of lithosphere-scale lineaments controls rift physiography - the upper-crustal expression of the Sorgenfrei-Tornquist Zone, Offshore southern Norway.** *Solid Earth.* 2018b; **9**(2): 403–429.
[Publisher Full Text](#)
- Phillips TB, Magee C, Jackson CAL, *et al.*: **Determining the three-dimensional geometry of a dike swarm and its impact on later rift geometry using seismic reflection data.** *Geology.* 2018a; **46**(2): 119–122.
[Publisher Full Text](#)
- Pickard NA, Eilertsen F, Hanken NM, *et al.*: **Stratigraphic framework of Upper Carboniferous (Moscowian- Kasimovian) strata in Biinsow Land, Central Spitsbergen: palaeogeographic implications.** *Norsk Geologisk Tidsskrift.* 1996; **76**: 169–185.
- Piepjohk K: **The Svalbardian-Ellesmerian deformation of the Old Red Sandstone and the pre-Devonian basement in NW Spitsbergen (Svalbard).** In: *New Perspectives on the Old Red Sandstone.* edited by: Friend, P. F. and Williams, B. P.J., Geol Soc London Spec Publi. 2000; **180**: 585–601.
[Publisher Full Text](#)
- Piepjohk K, Dallmann WK, Elvevold S: **The Lomfjorden Fault Zone in eastern Spitsbergen (Svalbard).** In: *Circum-Arctic Structural Events: Tectonic Evolution of the Arctic Margins and Trans-Arctic Links with Adjacent Orogens.* edited by: Piepjohk, K Strauss, J.V Reinhardt, L. and McClelland, W.C. GSA Spec Paper. 2019; **541**: 95–130.
[Publisher Full Text](#)
- Polyansky OP, Prokopiev AV, Babichev AV, *et al.*: **The rift origin of the Vilyui basin (East Siberia), from reconstructions of sedimentation and mechanical mathematical modeling.** *Russian Geology and Geophysics.* 2013; **54**(2): 121–137.
[Publisher Full Text](#)
- Polyansky OP, Prokopiev AV, Koroleva OV, *et al.*: **Temporal correlation between dyke swarms and crustal extension in the middle Palaeozoic Vilyui rift basin, Siberian platform.** *Lithos.* 2017; **282–283**: 45–64.
[Publisher Full Text](#)
- Powell JW, Schneider DA: **Phanerozoic record of Northern Ellesmere Island, Canadian High Arctic, Resolved through ⁴⁰Ar/³⁹Ar and (U-Th)/He geochronology.** *Tectonics.* 2022; **41**(9): e2021TC007065.
[Publisher Full Text](#)
- Powerman V, Shatsillo A, Coe R, *et al.*: **Palaeogeography of the Siberian platform during middle Palaeozoic Times (~450–400Ma): new palaeomagnetic evidence from the Lena and Nyuya rivers.** *Geophy J Int.* 2013; **194**(3): 1412–1440.
[Publisher Full Text](#)
- Predtechensky NN, Krasnov VI: **Intermontane depressions in the Altai-Sayan region.** *International Symposium in the Devonian system, 6th-8th September 1967.* Calgary, Alberta, Canada, 1967; **1**: 463–472.
[Reference Source](#)
- Puchkov V, Ernst RE, Hamilton MA, *et al.*: **A Devonian >2000-km-long dolerite dyke swarm belt and associated basalts along the Urals-Novozemelian fold-belt: part of an East-European (Baltica) LIP tracing the Tuzo Superswell.** *GFF.* 2016; **138**(1): 6–16.
[Reference Source](#)
- Reguir EP, Salnikova EB, Yang P, *et al.*: **U-Pb geochronology of calcite carbonatites and jacupirangite from the Guli alkaline complex, Polar Siberia, Russia.** *Mineral Mag.* 2021; **85**(4): 469–483.
[Publisher Full Text](#)
- Ricci J, Quidelleur X, Pavlov V, *et al.*: **New ⁴⁰Ar/³⁹Ar and K-Ar ages of the Viluy traps (Eastern Siberia): further evidence for a relationship with the Frasnian-Famennian mass extinction.** *Palaeogeogr Palaeoclimatol Palaeoecol.* 2013; **386**: 531–540.
[Publisher Full Text](#)
- Roberts D: **Age of the Hamningberg dolerite dyke, Varanger Peninsula, Finnmark: Devonian rather than Vendian - a revised interpretation.** *Norges Geologiske Undersøkelse Bulletin.* 2011; **451**: 32–36.
[Reference Source](#)
- Roberts D, Mitchell JG, Andersen TB: **A post-Caledonian dyke from Magerøy North Norway: age and geochemistry.** *Norw J Geol.* 1991; **71**: 289–294.
[Reference Source](#)
- Roberts D, Onstott TC: **⁴⁰Ar/³⁹Ar laser microprobe analyses and geochemistry of dolerite dykes from the Rybachi and Sredni Peninsulas, NW Kola, Russia.** *Norges Geologiske Undersøkelse Special Publication,* 1995; **7**: 307–314.
- Roberts D, Walker N: **Late Vendian U-Pb zircon age of a dolerite dyke from near Hamningberg, Varanger Peninsula - a preliminary report.** *NGU Report.* 1996; **96**(162): 1–15.
[Reference Source](#)
- Roberts D, Walker N: **U-Pb zircon age of a dolerite dyke from near Hamningberg, Varanger Peninsula, North Norway, and its regional significance.** *NGU Bulletin.* 1997; **432**: 95–102.
[Reference Source](#)
- Safonova IV, Buslov MM, Iwata K, *et al.*: **Fragments of Vendian-Early Carboniferous Oceanic Crust of the Paleo-Asian Ocean in foldbelts of the Altai-Sayan Region of Central Asia: geochemistry, biostratigraphy and structural setting.** *Gondwana Res.* 2004; **7**(3): 771–790.
[Publisher Full Text](#)
- Sazonova LV, Nosova AA, Yutkina EV, *et al.*: **Genesis and evolution of mantle melts of the devonian mafic-ultramafic rocks from the Eastern Azov Region (Dnieper-Donets Rift, Ukraine): evidence from clinopyroxene geochemistry.** *Petrology.* 2019; **27**(6): 633–654.
[Publisher Full Text](#)
- Scheibner C, Blomeier D, Forke H, *et al.*: **From terrestrial to shallow-marine depositional environments: reconstruction of the depositional environments during the Late Carboniferous transgression of the Lomfjorden Trough in NE Spitsbergen (Malte Brunfjellet Formation).** *Norw J Geol.* 2015; **95**(2): 127–152.
[Publisher Full Text](#)
- Scheibner C, Hartkopf-Fröder C, Blomeier D, *et al.*: **The mississippian (lower carboniferous) in northeast Spitsbergen (Svalbard) and a re-evaluation of the Billefjorden Group.** *Zeitschrift der Deutschen Gesellschaft für Geowissenschaften.* 2012; **163**(3): 293–308.
[Publisher Full Text](#)
- Schneider DA, Faehrich K, Majka J, *et al.*: **⁴⁰Ar/³⁹Ar geochronologic evidence of Eureka deformation within the West Spitsbergen Fold and Thrust Belt.** In: *Circum-Arctic Structural Events: Tectonic Evolution of the Arctic Margins and Trans-Arctic Links with Adjacent Orogens.* edited by: Piepjohk, K, Strauss, J. V., Reinhardt, L. and McClelland, W. C., GSA Special Paper, 2018; **541**: 1–16.
[Publisher Full Text](#)
- Sears JW, Price RA: **New look at the Siberian connection: No SWEAT.** *Geology.* 2000; **28**(5): 423–426.
[Publisher Full Text](#)
- Seim A, Møgster T, Klausen OA, *et al.*: **Completion report well 7224/7-1, exploration division, exploration department, statoil, Northern Norway.** 1988; 1–254.
[Reference Source](#)
- Senger K, Betlem P, Helland-Hansen A, *et al.*: **Multi-disciplinary geoscientific expedition to Woodfjorden, NW Svalbard: Field sites, methods, and preliminary results.** *Czech Polar Reports.* 2023; **13**(2): 142–161.
[Publisher Full Text](#)
- Senger K, Planke S, Polteau S, *et al.*: **Sill emplacement and contact metamorphism in a siliciclastic reservoir on Svalbard, Arctic Norway.** *Norw J Geol.* 2014; **94**: 155–169.
[Reference Source](#)
- Senger K, Roy S, Braathen A, *et al.*: **Geometries of doleritic intrusions in central Spitsbergen, Svalbard: an integrated study of an onshore-offshore magmatic province with applications to CO₂ sequestration.** *Norw J Geol.* 2013; **93**: 143–166.
[Reference Source](#)
- Shaybekov RI: **Rare earth elements and precious metals in the gabbro-dolerites of Pai-Khoy (Yugorski peninsula).** *Lithosphera.* 2010; **6**: 83–96.
[Reference Source](#)
- Shipilov EV, Karyakin YV: **Dikes of Hayes Island (Frantz Josef Land Archipelago): Tectonic Position and Geodynamic Interpretation.** *Doklady Earth Sciences.* 2014; **457**: 814–818.
[Publisher Full Text](#)
- Sirotkin AN, Chebdevsky VS, Evdokimov AN, *et al.*: **Late Paleozoic alkaline-ultra-based magmatism and the prospects of the Al-Masinosin of the Archipelago Spitsbergen [in Russian]. Intelligence and the protection of the subsoil, The Ministry of Natural Resources and Ecology of the Russian Federation.** *Russian Geological Society.* 2012; 63–71.
- Skjeltvåle BL, Amundsen HEF, O'Reilly SY, *et al.*: **A primitive alkali basaltic stratovolcano and associated eruptive centres, northwestern Spitsbergen: volcanology and tectonic significance.** *Journal of Volcanology and Geothermal Research.* 1989; **37**: 1–19.
[Publisher Full Text](#)
- Smelror M, Petrov OV, Larssen GB, *et al.*: **Geological Atlas of the Barents Sea.** Geological Survey of Norway, Trondheim, Norway, 2009.
[Reference Source](#)

- Smyrak-Sikora AA, Johannessen EP, Olaussen S, *et al.*: **Sedimentary architecture during carboniferous rift initiation - the arid Billefjorden Trough, Svalbard.** *J Geol Soc London.* 2019; **176**(2): 225–252.
[Publisher Full Text](#)
- Starostenko V, Janik T, Yegorova T, *et al.*: **Lithospheric structure along wide-angle seismic profile GEORIFT 2013 in Pripjat-Dnieper-Donets Basin (Belarus and Ukraine).** *Geophys J Int.* 2018; **212**(2): 1932–1962.
[Publisher Full Text](#)
- Stemmerik L: **Late Palaeozoic evolution of the North Atlantic margin of Pangea.** *Palaeogeogr Palaeoclimatol Palaeoecol.* 2000; **161**(1–2): 95–126.
[Publisher Full Text](#)
- Stemmerik L, Dalhoff F, Larsen BD, *et al.*: **Wandel Sea Basin, eastern North Greenland.** *Geology of Greenland Survey Bulletin.* 1998; **180**: 55–62.
[Publisher Full Text](#)
- Stemmerik L, Vigran JO, Piasecki S: **Dating of late Paleozoic rifting events in the North Atlantic: new biostratigraphic data from the uppermost Devonian and Carboniferous of East Greenland.** *Geology.* 1991; **19**(3): 218–221.
[Publisher Full Text](#)
- Stephenson RA, the EUROPROBE Intraplate Tectonics and Basin Dynamics Dnieper-Donets and Polish Trough working groups: **Continental rift development in Precambrian and Phanerozoic Europe: EUROPROBE and the Dnieper-Donets Rift and Polish Trough basins.** *Sediment Geol.* 1993; **86**(1–2): 159–175.
[Publisher Full Text](#)
- Stovba S, Stephenson RA, Kivshik M: **Structural features and evolution of the Dniepr-Donets Basin, Ukraine, from regional seismic reflection profiles.** *Tectonophysics.* 1996; **268**(1–4): 127–147.
[Publisher Full Text](#)
- Sun J, Liu CZ, Tappe S, *et al.*: **Repeated kimberlite magmatism beneath Yakutia and its relationship to Siberian flood volcanism: insights from *in situ* U-Pb and Sr-Nd perovskite isotope analysis.** *Earth Planet Sci Lett.* 2014; **404**: 283–295.
[Publisher Full Text](#)
- Sun J, Tappe S, Kostrovitsky SI, *et al.*: **Mantle sources of kimberlites through time: a U-Pb and Lu-Hf isotope study of zircon megacrysts from the Siberian diamond fields.** *Chem Geol.* 2018; **479**: 228–240.
[Publisher Full Text](#)
- Svånå Harstad T: **Sandstone Provenance of the De Geerdalen Formation, Svalbard.** Master's Thesis, Norwegian University of Science and Technology, 2016; 1–125.
[Reference Source](#)
- Tappe S, Budde G, Stracke A, *et al.*: **The tungsten-182 record of kimberlites above the African superplume: Exploring links to the core-mantle boundary.** *Earth Planet Sci Lett.* 2020; **547**: 116473.
[Publisher Full Text](#)
- Tappe S, Smart KA, Stracke A, *et al.*: **Melt evolution beneath a rifted craton edge: $^{40}\text{Ar}/^{39}\text{Ar}$ geochronology and Sr-Nd-Hf-Pb isotope systematics of primitive alkaline basalts and lamprophyres from the SW Baltic Shield.** *Geochim Cosmochim Acta.* 2016; **173**: 1–36.
[Publisher Full Text](#)
- Tappe S, Smart KA, Torsvik TH, *et al.*: **Geodynamics of kimberlites on a cooling earth: clues to plate tectonic evolution and deep volatile cycles.** *Earth Planet Sci Lett.* 2018; **484**: 1–14.
[Publisher Full Text](#)
- Teben'kov AM, Ohta Y, Balashov JA, *et al.*: **Newtontoppen granitoid rocks, their and Rb-Sr age.** *Polar Res.* 1996; **15**(1): 67–80.
- Terekhov EN, Baluev AS, Przhivalgovsky ES: **Structural setting and geochemistry of devonian dikes in the kola peninsula.** *Geotectonics.* 2012; **46**(1): 69–84.
[Publisher Full Text](#)
- Tessensohn F: **Intra-continental fold belts, case 1: west spitsbergen, federal institute for geosciences and natural resources.** *Polar Issue.* 2001; **7**: 1–773.
- Tretiakova IG, Belousova EA, Malkovets VG, *et al.*: **Recurrent magmatic activity on a lithosphere-scale structure: crystallization and deformation in kimberlitic zircons.** *Gondwana Res.* 2017; **42**: 126–132.
[Publisher Full Text](#)
- Vorontsov AA, Fedoseev GS, Andryushchenko SV: **Devonian volcanism in the Minusa basin in the Altai-Sayan area: geological, geochemical, and Sr-Nd isotopic characteristics of rocks.** *Russ Geol Geophys.* 2013; **54**(9): 1001–1025.
[Publisher Full Text](#)
- Vorontsov A, Yarmolyuk V, Drill S, *et al.*: **Magmatism of the Devonian Altai-Sayan Rift System: geological and geochemical evidence for diverse plume-lithosphere interactions.** *Gondwana Res.* 2021; **89**: 193–219.
[Publisher Full Text](#)
- Wang J, Su Y, Zheng J, *et al.*: **Petrogenesis of early Carboniferous bimodal-type volcanic rocks from the Junggar Basin (NW China) with implications for Phanerozoic crustal growth in Central Asian Orogenic Belt.** *Gondwana Res.* 2021; **89**: 220–237.
[Publisher Full Text](#)
- Welbon AI, Maher Jr HD: **Tertiary tectonism and basin inversion of the St. Jonsfjorden region, Svalbard.** *J Struct Geol.* 1992; **14**(1): 41–55.
[Publisher Full Text](#)
- Wilson M, Lyashkevich ZM: **Magmatism and the geodynamics of rifting of the Pripjat-Dnieper-Donets rift, East European Platform.** *Tectonophysics.* 1996; **268**(1–4): 65–81.
[Publisher Full Text](#)
- Wilson M, Wijbrans J, Fokin PA, *et al.*: **$^{40}\text{Ar}/^{39}\text{Ar}$ dating, geochemistry and tectonic setting of Early Carboniferous dolerite sills in the Pechora basin, foreland of the Polar Urals.** *Tectonophysics.* 1999; **313**(1–2): 107–118.
[Publisher Full Text](#)
- Witt-Nilsson P, Gee DG, Hellman FJ: **Tectonostratigraphy of the Caledonian Atomfjella Antiform of northern Ny Friesland, Svalbard.** *Norsk Geol Tidsskr.* 1998; **78**: 67–80.
[Reference Source](#)
- Worsley D, Agdestein T, Gjelberg JG, *et al.*: **The geological evolution of Bjørnøya, Arctic Norway: implications for the Barents Shelf.** *Norsk Geol Tidsskr.* 2001; **81**(3): 195–234.
[Reference Source](#)
- Zelazniewicz A, Bula Z, Fanning M, *et al.*: **More evidence on Neoproterozoic terranes in Southern Poland and Southeastern Romania.** *Geol Quart.* 2009; **53**(1): 93–124.
[Reference Source](#)
- Ziegler PA: **Evolution of the Arctic-North Atlantic and the western Tethys - a visual presentation of a series of paleogeographic-paleotectonic maps.** AAPG Memoir, 1988; **43**: 164–196.
[Publisher Full Text](#)
- Zonenshain LP, Kuzmin MI, Natapov LM: **Geology of the USSR: a plate tectonic synthesis.** *Geodynamics Series.* 1990; **21**: 1–242.
[Publisher Full Text](#)
- Zurevinski SE, Heaman LM, Creaser RA, *et al.*: **The Churchill kimberlite field, Nunavut, Canada: petrography, mineral chemistry, and geochronology.** *Can J Earth Sci.* 2008; **45**(9): 1039–1059.
[Publisher Full Text](#)

Open Peer Review

Current Peer Review Status:  

Version 1

Reviewer Report 23 January 2025

<https://doi.org/10.21956/openreseurope.20341.r49580>

© 2025 Ivanov A. This is an open access peer review report distributed under the terms of the [Creative Commons Attribution License](#), which permits unrestricted use, distribution, and reproduction in any medium, provided the original work is properly cited.



Alexei Ivanov

Russian Academy of Sciences, Moscow, Russian Federation

The paper by Koehl et al. "Devonian-Mississippian magmatism related to extensional collapse in Svalbard: implications for radiating dyke swarms" is devoted to the identification of intrusive rocks in East Spitsbergen using seismic data and the association of these data with geological maps. The authors attempt (successfully) to identify Devonian intrusive rocks and draw some general geodynamic implications. In my opinion, the paper is of good quality and can be published after minor revisions. See comments below.

1. Fig. 1. Panel d is not indicated as d.
2. Little is known about the western extent of the paleorift – Svalbard is located to north not west. Please rephrase.
3. Ultramafic–mafic rocks such as alkaline basalts dominate - alkaline basalts are not ultramafic. Please rephrase.
4. On the Kola Peninsula, it includes ultramafic-carbonatite complexes of the Kola Alkaline Province (Downes et al., 2005) – one reference here is probably not enough. At least, credit to Kogarko, 1987 [Ref 1] should be made.
5. The Early Devonian age is probably a minimum age as suggested by excess argon in the sample. – what is the evidence for excess argon?

General comment: Not cited paper by Burzyński et al., 2018 [Ref 2] could be of interest.

References

1. Kogarko L: Alkaline rocks of the eastern part of the Baltic Shield (Kola Peninsula). *Geological Society, London, Special Publications*. 1987; **30** (1): 531-544 [Publisher Full Text](#)
2. Burzyński M, Michalski K, Manby G, Nejbort K: Mineralogical, Rock-Magnetic and Palaeomagnetic Properties of Metadolerites from Central Western Svalbard. *Minerals*. 2018; **8** (7). [Publisher Full Text](#)

Is the work clearly and accurately presented and does it cite the current literature?

Yes

Is the study design appropriate and does the work have academic merit?

Yes

Are sufficient details of methods and analysis provided to allow replication by others?

Yes

If applicable, is the statistical analysis and its interpretation appropriate?

Not applicable

Are all the source data underlying the results available to ensure full reproducibility?

Yes

Are the conclusions drawn adequately supported by the results?

Yes

Competing Interests: No competing interests were disclosed.

Reviewer Expertise: Igneous petrology, geochemistry, geochronology

I confirm that I have read this submission and believe that I have an appropriate level of expertise to confirm that it is of an acceptable scientific standard.

Reviewer Report 15 January 2025

<https://doi.org/10.21956/openreseurope.20341.r48634>

© 2025 Stanton N. This is an open access peer review report distributed under the terms of the [Creative Commons Attribution License](#), which permits unrestricted use, distribution, and reproduction in any medium, provided the original work is properly cited.



Natasha Stanton 

University of Rio de Janeiro State, Rio de Janeiro, RJ, Brazil

The authors present an article on the Devonian-Missipian magmatism at Svalbard and Discuss its genesis and correlations with the regional LIP of the High Arctic. The article covers a very relevant subject in Plate Tectonics, presenting high quality data and very interesting results that clearly show the interplay between tectonics and magmatism through successive deformational Periods. The results point out the direct correlation between the basement orogenic structures and the mafic-ultramafic intrusions, showing the impact of preexisting thrusts, and fault zones on the emplacement of sills and dykes, specially on the focusing pathways for the magmatism. The authors present a complete review of the existing plume hypotheses for the origin of radiating dyke swarms, showing that in most cases the structural inheritance constitutes the best explanation for the dykes and other intrusives formation. The observations are well presented and the interpretations are original. The study is a great contribution to our understanding of the mechanisms of magma emplacement, specially in the context of the plate tectonic cycles, and for

the knowledge of the Svalbard.

Is the work clearly and accurately presented and does it cite the current literature?

Yes

Is the study design appropriate and does the work have academic merit?

Yes

Are sufficient details of methods and analysis provided to allow replication by others?

Yes

If applicable, is the statistical analysis and its interpretation appropriate?

Not applicable

Are all the source data underlying the results available to ensure full reproducibility?

Yes

Are the conclusions drawn adequately supported by the results?

Yes

Competing Interests: No competing interests were disclosed.

Reviewer Expertise: Marine Geophysics applied to geotectonics

I confirm that I have read this submission and believe that I have an appropriate level of expertise to confirm that it is of an acceptable scientific standard.
