

ORIGINAL RESEARCH

Serglycin is part of the secretory repertoire of LPS-activated monocytes

Ingrid Benedicte M. Kolseth¹, Trine Marita Reine¹, Tram Thu Vuong¹, Astri Jeanette Meen¹, Qiong Fan¹, Trond Geir Jenssen^{2,3}, Line Mariann Grønning-Wang¹, & Svein Olav Kolset¹

¹Department of Nutrition, Institute of Basic Medical Sciences, University of Oslo, Oslo, Norway

²Department of Transplant Medicine, Section of Nephrology, Oslo University Hospital, Rikshospitalet, Oslo, Norway

³Metabolic and Renal Research Group, UiT The Arctic University of Norway, Tromsø, Norway

Keywords

Cytokines, inflammation, lipopolysaccharide, monocytes, serglycin

Correspondence

Ingrid Benedicte Moss Kolseth, Department of Nutrition, Institute of Basic Medical Sciences, University of Oslo, Oslo, Norway.

Tel: 0047 90834083; Fax: 0047 22851398;

E-mail: ingridbenedicte@gmail.com

Funding information

This study was supported by grants from The Norwegian Extrafoundation for Health and Rehabilitation, The Norwegian Diabetes Association, and The Throne Holst Foundation.

Received: 15 August 2014; Revised: 13 November 2014; Accepted: 18 December 2014

Final version published online 11 February 2015.

Immunity, Inflammation and Disease
2015; 3(1): 23–31

doi: 10.1002/iid3.47

Abstract

Monocytes play multiple roles in the immune system, and are active in both acute and chronic diseases. Patients exposed to bacterial infections depend on monocytes in defense reactions, but excessive immune reactions may also cause morbidity through systemic inflammatory responses. Few studies have addressed the importance of proteoglycans, and in particular, the hematopoietic serglycin, in such monocyte immune reactions. Adherent primary monocytes were cultured in absence and presence of LPS. Media were analyzed by ELISA for detection of serglycin. Lysed cell fractions were used to determine the mRNA level of serglycin. Monocytes were also cultured on chamber slides to investigate if serglycin could be detected intracellularly by immunocytochemistry. Monocytes secreted serglycin, and LPS-stimulation increased the secretion. Secretion of inflammatory cytokines increased to a larger extent than serglycin. mRNA levels of serglycin were also increased, suggesting both increased expression and secretion. Immunocytochemistry revealed the presence of serglycin in intracellular vesicles, many destined for secretion. Serglycin containing vesicles increased in number and size when the cells were exposed to LPS. Intracellular vesicle localization and secretion of the proteoglycan serglycin is shown for the first time in primary human monocytes. Monocyte activation by LPS increased the expression and secretion of serglycin, suggesting roles for serglycin in inflammatory processes.

Introduction

Non-resolving inflammation is a driving force in several acute and chronic diseases, and postulated to be one of the greatest contributors to the medical burden in developed countries.

Exaggerated or insufficient inflammatory responses from the innate immune system can lead to organ dysfunction and shock [1]. Excessive inflammatory responses also cause morbidity and mortality in chronic diseases such as diabetes mellitus, atherosclerosis, and autoimmune diseases [2–4]. Monocytes are potent innate immune cells, representing 2–10% of total leukocyte counts in circulating blood. They are important in immediate responses to infections, and

the non-classical and the intermediate subpopulations are increased in numbers in several acute and chronic diseases [5]. Pattern recognition receptors on the immune cells recognize pathogen-associated molecular patterns or damage-associated molecular patterns. Lipopolysaccharide (LPS) is a classic pathogen-associated molecular pattern which is found in the outer cell membrane of gram-negative bacteria. Monocytes are activated when LPS bind to Toll-like receptor 4 [6]. This activates a cascade of intracellular signaling pathways, culminating in increased production of cytokines such as tumor necrosis factor (TNF) α , interleukin (IL)-1 α , IL-1 β , IL-6, CXCL8, and transforming growth factor (TGF)- β [2, 6].

Human blood monocytes are divided into three subsets; the classical strongly CD14-positive (CD14⁺⁺CD16⁻) monocyte, the intermediate CD14- and CD16-positive monocyte (CD14⁺⁺CD16⁺), and the non-classical monocyte, which is strongly CD16-positive (CD14⁺CD16⁺⁺). The intermediate and the non-classical monocyte together are often referred to as CD16⁺ (CD16-positive) monocytes [7]. By serum deprivation for 90 min, human peripheral blood mononuclear cells (PBMC) will adhere *in vitro*. Such adherent monocytes are dominated by CD16-positive cells [8]. Levels of these cells are expanded in septic patients, in patients suffering from chronic kidney disease, during inflammatory diseases, and in patients with localized infections [9–12]. These cells are potent producers of TNF α and IL-1 β in response to LPS [8, 13].

Monocytes also secrete proteoglycans (PGs) in response to LPS-stimulation [14]. PG secretion in human monocytes is increased with various immunological stimuli, such as LPS [14]. In early studies the secreted PGs were identified based on the nature of their glycosaminoglycan chains, not the protein core. Primary human monocytes express almost exclusively PGs with chondroitin 4-sulfate chains, whereas differentiated macrophages express both chondroitin 4-sulfate and chondroitin 4,6-disulfate (Chondroitin sulfate E) [15, 14, 16]. Serglycin has been identified as the major PG in human monocyte cell lines [16, 17], but has not been studied to any great extent in primary human monocytes. The major part is constitutively secreted under *in vitro* conditions and has an approximate molecular weight over 220 kDa [18]. Cell fractions of primary human monocytes have previously been shown to contain more free chondroitin sulfate chains than intact PGs [16]. In murine macrophages serglycin is also the major secreted PG [16, 19], increased after LPS stimulation and important for the secretion of TNF α . Also, in endothelial cells LPS increase the secretion of serglycin [20]. Serglycin has earlier been shown to co-localize with inflammatory mediators in secretory vesicles in endothelial cells, cytotoxic T-cells and mast cells, suggesting a role for serglycin in storage and secretion of inflammatory mediators [21, 22]. CD16-positive cells have been shown to be potent producers of classic pro-inflammatory mediators [10, 13, 23]. The aim of this study was to investigate serglycin expression, localization, and secretion in cultured primary human CD16-positive monocytes [8], before and after LPS stimulation. Results presented suggest that serglycin expression and secretion is part of the inflammatory response in human monocytes and can be detected in intracellular vesicles.

Materials and Methods

Human monocyte culture

Peripheral blood mononuclear cells (PBMC) were obtained from Buffy coats suspended in endotoxin-free PBS (Sigma),

using Lymphoprep density gradient (Axis-Shield Poc AS) according to the manufacturers instruction. The PBMC fraction was suspended in RPMI1640 with L-glutamine (Gibco) and antibiotics (penicillin and streptomycin (Sigma)) and 5 mM of glucose (Sigma) without serum, and plated onto plastic chamber slides (Nalge Nunc International). Monocytes were allowed to adhere for 90 min at 37°C/5% CO₂, before washing three times with RPMI1640 to remove non-adherent cells. The adherent cells were then cultured in RPMI1640, with L-glutamine/antibiotics, 10% heat inactivated fetal calf serum (Sigma), and 5 mM of glucose, and in presence or absence of 1 μ g/ml LPS derived from *Escherichia coli* (O26:B26 from Sigma–Aldrich (Sigma)). The cultures were incubated for 3, 6 and 24 h, respectively. Adherent cells obtained by this method have previously been shown to be highly enriched in CD16-positive monocytes, as 60% of the cells in such cultures are CD16high. Only 20% of the cells were shown to be of the main blood monocyte population (CD14high)—also referred to as classical monocytes [8].

Serglycin ELISA

Serglycin released from the adherent monocytes was measured in culture supernatants using an enzyme-linked immunosorbent assay (ELISA) according to Niemann *et al.* [24], using the Genesis software, on Thermo Electron Corporation Multiskan EX.

Quantitative real-time PCR

RNA from primary monocytes was isolated using the E.Z.N. A total RNA kit 1 (Omega Bio-Tek). RNasin[®] Plus RNase Inhibitor (Promega) was added to the isolated RNA, and the RNA was stored at –80°C for later reverse transcription to cDNA. From each sample, 90 ng of total RNA was reverse transcribed using High Capacity RNA-to-cDNA Kit (Applied Biosystems). Quantitative real-time (qRT) PCR was performed with TaqMan Gene Expression Master Mix (Applied Biosystems), cDNA and dH₂O up to 20 μ l. Specific mRNA levels were determined by qRT-PCR performed on ABI PRISM 7900 HT Sequence detector system (Applied Biosystems), using TaqMan gene expression assays (catalogue no. Hs01004159_m1 for serglycin) and the housekeeping genes β -actin and RPL30 (catalogue no. Hs99999903_m1 and Hs00265497_m1, respectively; Applied Biosystems). All samples were run in triplicates, and the housekeeping genes and target genes were run on the same plate. The relative mRNA level for each transcript was calculated by the $\Delta\Delta$ cycle threshold (Ct) method [25].

Immunocytochemistry

Adherent monocytes grown on chamber slides were washed three times in PBS, fixed in 4% paraformaldehyde for

10 min, and washed in PBS for 10 min. Both primary and secondary antibodies were diluted in 1.25% BSA containing 0.2% saponin and spun at 13000 rpm for 5–10 min at 4°C before use. The cells were incubated with primary antibody affinity purified rabbit anti-human serglycin (1 µg/ml, kindly provided by N. Borregaard) or the affinity purified concentration matched irrelevant control for serglycin (rabbit anti-Hemocyanin (KLH), Sigma–Aldrich), overnight at 4°C in a dark humidity chamber. Some wells were only incubated with dilution buffer without primary antibodies, to test for specificity of the secondary antibody. The slides were then washed twice for 5 min in PBS and incubated with a secondary antibody, Alexa Fluor 488 conjugated goat anti-rabbit IgG (1:600, Invitrogen), for 90 min in a dark humidity chamber at room temperature. Finally, the slides were washed in PBS for 10 min, washed in MQ-H₂O, air dried, and mounted using SlowFade Gold antifade reagent with DAPI (Invitrogen). Cells were examined with an Olympus FluoView FV1000 confocal microscope (Olympus Corporation, Tokyo, Japan) and a PlanApo 60x/1.40 oil objective. All images were obtained by sequential scanning under the same setting using FV10-ASW 3.1 software. Image processing was performed with Photoshop CS4 software (Adobe).

Statistical analysis

Data in Figures 1 and 2 were analyzed with GraphPad Prism 5.03. Differences between the groups were analyzed using the non-parametrical Wilcoxon matched pairs test. Differences of $P \leq 0.05$ were considered significant. Differences between the groups in Figure 3 were analyzed using the non-parametric Friedman test for repeated measures, with multiple corrections performed with the Dunns post-hoc test with columns to be compared selected on the basis of experimental design.

Results and Discussion

LPS increased the secretion and expression of serglycin in monocytes

To investigate the possible implications of serglycin in monocytes exposed to LPS stimulation, supernatants were subjected to ELISA using an antibody against human serglycin. The results obtained show that serglycin is a secretory product of LPS-activated human primary monocytes. The PG serglycin has previously been shown to be a secretory product of the monocyte-like cell lines U937 [16] and THP-1 cells [17]. In this study serglycin secretion in primary human monocytes is demonstrated for the first time.

In monocytes incubated with LPS, secretion of serglycin was significantly increased 3.3 times after 3 h, as can be seen

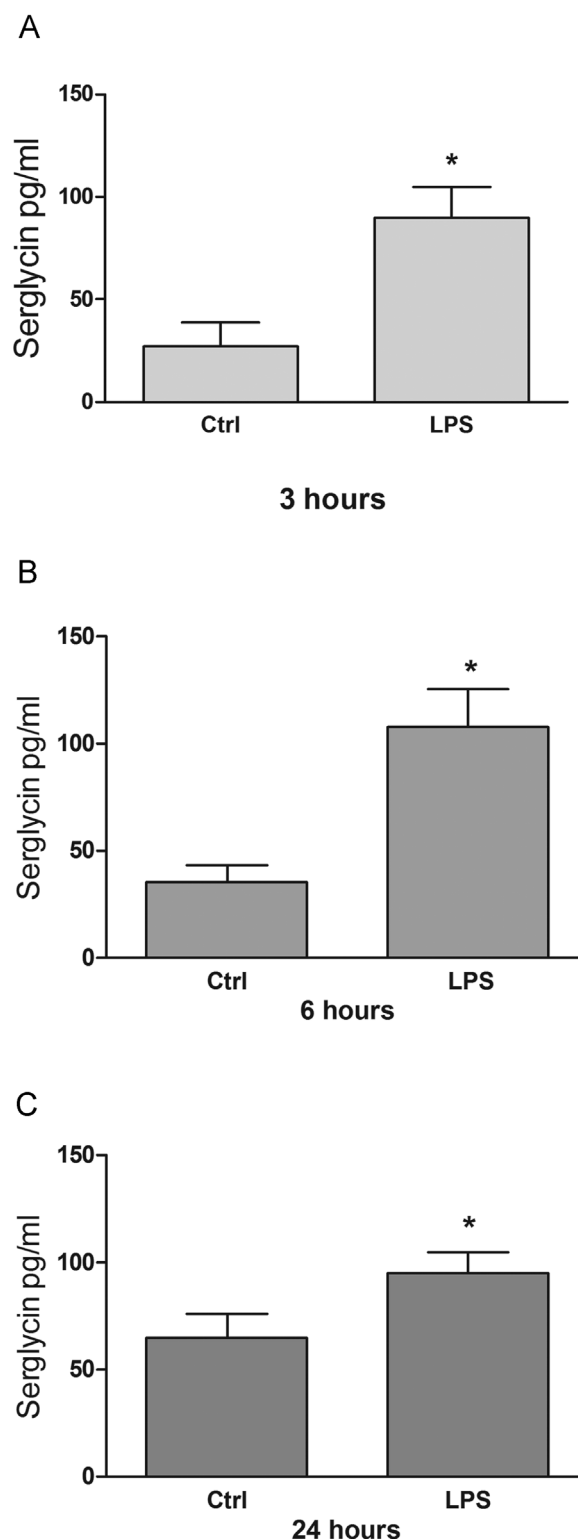


Figure 1. Secretion of serglycin in LPS-activated human adherent monocyte cultures is increased. Cultures of adherent human monocytes from seven separate donors were exposed to either LPS (1 µg/ml) or saline for 3 (A), 6 (B), or (C) 24 h, at 37°C with 5% CO₂. Secreted serglycin found in the media was quantified by ELISA. * $P \leq 0.05$.

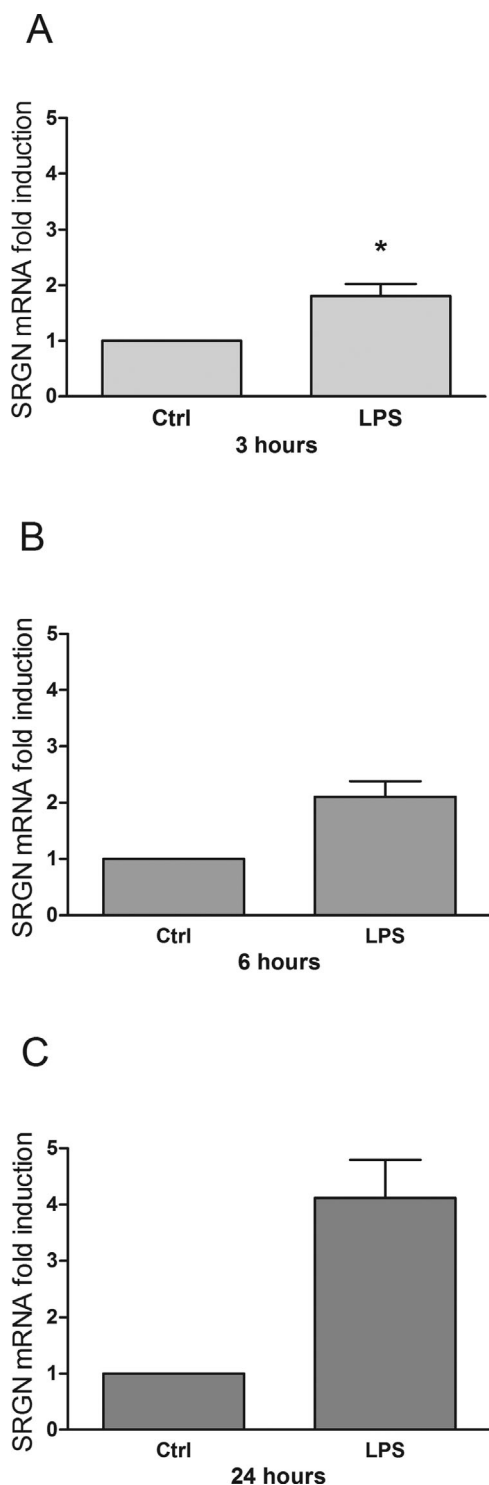


Figure 2. Serglycin mRNA expression in LPS-activated human primary monocytes is increased. Adherent monocytes from 4–6 healthy persons were exposed to LPS (1 μ g/ml) or saline for 3 (A), 6 (B), and 24 (C) hours, at 37°C with 5% CO₂. RNA was isolated and assayed for serglycin by quantitative RT-PCR. Data are shown as mean fold change from monocytes exposed to saline. * $P \leq 0.05$.

in Figure 1A. After 6 h the increase was 3.0 times, whereas the stimulatory effects observed after 24 h incubation were weaker (approximately 1.5 times)—but still significant. In addition, the increased secretion of serglycin is supported by a corresponding increased mRNA expression (Fig. 2), evident by the doubling of mRNA levels after 3 and 6 h and approximately fourfold increase after 24 h compared to controls. In unstimulated cells the increase in serglycin secretion is time dependent and lower than in LPS stimulated cells. The effect of LPS on serglycin is rapid and secretion is sustained at this high level through the entire incubation period. It is worth noting that the high serglycin secretion is followed by a higher level of serglycin mRNA in stimulated compared to control cells after 24 h, suggesting feedback mechanisms in the LPS treated cells.

In control cells there is a constitutive and low secretion of serglycin, while the secretion of chemokines and cytokines is at a very low level and not increasing with time. The effect of LPS on the secretion of chemokines and cytokines was determined by a multiplex antibody bead kit. LPS was a potent inducer of secretion of TNF- α , IL-1 α and β , CXCL8, CCL2, 3 and 4 and IL-6, as can be seen in Figure 3. Stimulatory effects were obvious after 3 h and increased in a time dependent manner. These results, demonstrating increased secretion of chemokines and cytokines, were further supported by the large increase also seen in mRNA levels, determined by qRT-PCR (data not shown) for all these cytokines and chemokines, thereby confirming effects of LPS on both expression and secretion. Accordingly, the secretion pattern for serglycin differed from those of the chemokines and cytokines investigated, suggesting an early role of serglycin in inflammatory reactions. From these results we conclude that serglycin may be regarded as a part of the secretory repertoire of human monocytes, and thereby the innate immune defense. The increase in secretion after LPS stimulation suggests that serglycin has functions related to inflammatory reactions, possibly involving serglycin in secretion and transport of inflammatory mediators.

Early studies on PG secretion in monocyte cell lines did not allow for identification of serglycin, but was based on radiolabeling of GAG-chains with ³⁵S-sulfate. Activation with LPS increased ³⁵S-PG secretion twofold, whereas interferon- γ treatment attenuated the secretion [14], demonstrating that PG secretion in human monocytes is subject to different types of regulation depending on type of stimuli.

The increased secretion of inflammatory mediators from LPS-activated monocytes after stimulation coincides with an increase in serglycin secretion. This may reflect the importance of serglycin as a secretory vehicle—and thereby dampening or promoting effects on inflammation. This suggests that serglycin may be an important factor in monocyte defense mechanisms. We demonstrate that

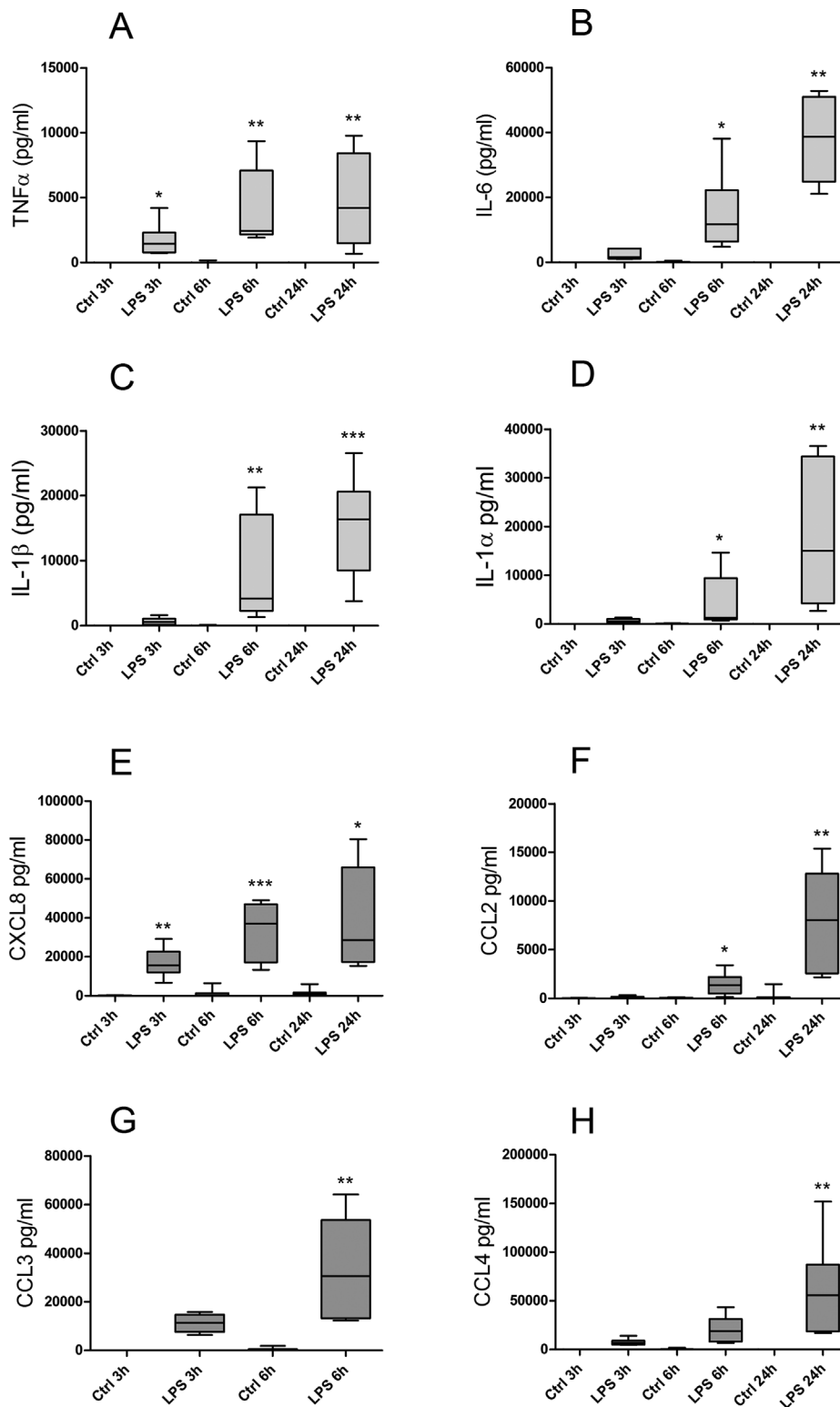


Figure 3. LPS-induced cytokine and chemokine release. Human adherent monocytes from seven separate donors were treated with saline or LPS (1 μ g/ml). After 3, 6, and 24 h of incubation at 37°C with 5% CO₂, media were harvested and analyzed for TNF α (A), IL-1 α (D), IL-1 β (C), IL-6 (B), CCL2 (F), CCL3 (G), CCL4 (H), and CXCL8 (E) with a multiplex antibody bead kit. Levels of CCL3 from LPS-stimulated monocytes at 24 h were above range in most donors at this time-point (hence, data not shown). Each LPS stimulation point is compared to its own control. * $P \leq 0.05$, ** $P \leq 0.005$, *** $P \leq 0.001$.

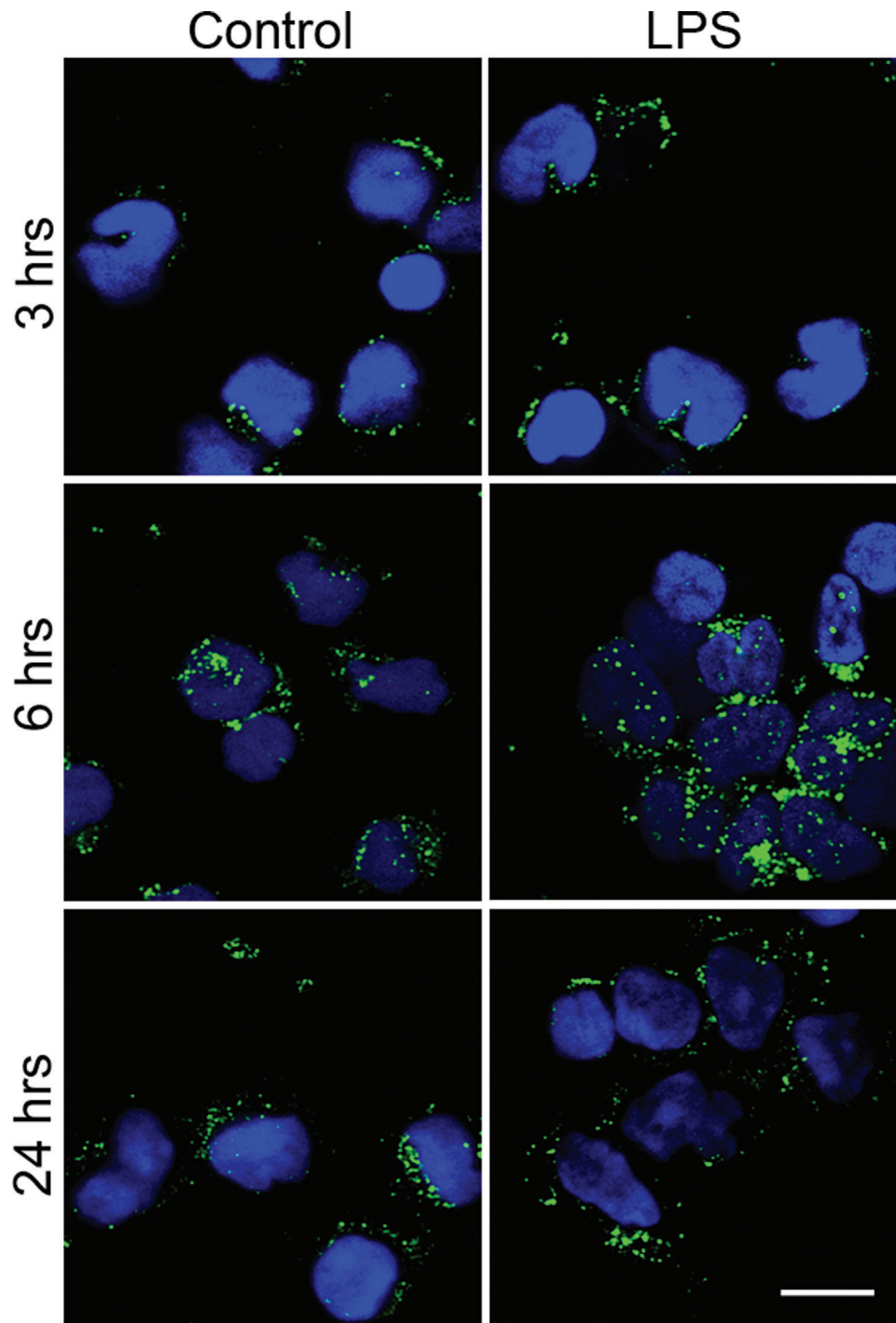


Figure 4. Immunostaining reveals intracellular vesicles containing serglycin in adherent human monocytes. The panels show adherent monocytes incubated in the presence (right) or absence (left) of LPS (1 $\mu\text{g/ml}$), for 3, 6, and 24 h. The cells were fixed, and stained for serglycin (green). Positive DAPI staining (blue) show the nucleus. Bar = 50 μM .

immediate secretion more than expression of serglycin, which is a later effect, is altered by an inflammatory stimulus.

In a study by Zernichow *et al.*, $\text{TNF}\alpha$ secretion from macrophages derived from serglycin^{-/-} mice increased when stimulated with LPS. The increased level of $\text{TNF}\alpha$ was

due to increased secretion, not synthesis [19]. In the same study, secretion of MMP-9, IL-1 α , and CCL3 was not altered [19]. A study performed on LPS-activated endothelial cells showed that secretion of CXCL8 was unaltered by loss of serglycin [20]. It is therefore possible that serglycin

selectively interact with some chemokines more than others and that such interactions may differ between cell types.

Serglycin is present in intracellular vesicles in monocytes

Serglycin secretion has not previously been studied in primary human monocytes in any great detail. To further investigate serglycin secretion in LPS activated monocytes, cells were fixed and subjected to immunocytochemistry. From Figure 4, it can be demonstrated that monocytes contained both large and small serglycin-positive vesicles at all three time points (3 h, 16 h, and 24 h—both in the presence and the absence of LPS. After 3 h of LPS stimulation, no significant differences in the distribution or sizes of the vesicles were observed. After 6 h however, LPS-stimulated cells showed stronger serglycin staining with an increased number of larger vesicles, compared to the unstimulated cells. In control cells, the vesicles were concentrated more closely to the plasma membrane. In LPS-stimulated monocytes serglycin containing vesicles tended to be more evenly distributed throughout the entire cytoplasm. After 24 h, however, the size and intracellular localization of serglycin positive vesicles were similar in control and LPS stimulated cells. The data presented on serglycin secretion using ELISA suggest that levels secreted after 24 h are still higher than in control cells, but at the same levels as after 3 h of stimulation. The lack of difference in serglycin staining after 24 h can, however, indicate that secretion reaches a peak after LPS stimulation and that the cells thereafter return to a state of basal level secretion, as in controls.

The immunocytochemical demonstration of serglycin in secretory vesicles, increasing in number and size after LPS stimulation, further supports the hypothesis that serglycin has functions related to the inflammatory response. One such function could be to regulate secretion of cytokines and chemokines, as has been demonstrated in other serglycin expressing hematopoietic cells [21] and endothelial cells [22].

The extracellular role(s) of serglycin

Another intriguing aspect of serglycin secretion is the possibility that it may have functions in the extracellular environment of activated monocytes *following* secretion. It has been demonstrated that perforin and granzyme B delivered from cytotoxic T-cells to target cells are found in complex with serglycin, suggesting functions for serglycin-related targeted extracellular transport of inflammatory mediators [26]. Moreover, in serglycin overexpressing cells it has been demonstrated that secretion of active proteases depend on the expression of serglycin [27]. In monocytes,

secreted ^{35}S -PGs rich in serglycin was purified and added back to fresh cultures of monocytes. The ^{35}S -PGs were not degraded to any great extent and remained in the culture medium. No cellular uptake or degradation could be demonstrated [28]. We have also demonstrated that CCL3 binds to serglycin [29] and that deletion of the GAG binding domain in CCL3 reduced its chemoattractant activity [30]. These data and the data presented here suggest that serglycin secreted from human monocytes has extracellular and inflammatory functions. An increased secretion of serglycin from human monocytes after LPS exposure suggests that serglycin can be involved in secretion, protection, and delivery of such partner molecules during inflammatory reactions.

Future aspects

It has been suggested that serglycin may participate in the formation of chemotactic gradients of secretory products from different types of hematopoietic cells. Serglycin has also been detected on cells surfaces [31, 32], including breast cancer cells, suggesting interactions with cell surface components [33]. These are fascinating new aspect of PG biology [34, 35] that deserves to be addressed in future studies. Moreover, serglycin may be secreted directly to the extracellular environment. It cannot be excluded that serglycin is retained within secretory vesicles or exosomes. Preliminary studies in our laboratory show the presence of serglycin in microparticles (Reine, unpublished data).

Possible interactions between intracellular serglycin and storage and secretion of inflammatory mediators should be studied in order to determine if serglycin has mainly proinflammatory or antiinflammatory abilities—or both. In order to explore the role of serglycin in immunological reactions, serglycin^{-/-} mice represent a useful *in vivo* model. Furthermore, secreted vesicles containing serglycin should be analyzed for possible complexes between inflammatory mediators and serglycin.

Concluding Remarks

The data presented show that primary CD16-positive monocytes from healthy donors secrete serglycin as part of their inflammatory response to LPS. We also demonstrate for the first time that serglycin is found in secretory vesicles in primary monocytes. Together, these results suggest a role for serglycin in the innate immune defense system.

Acknowledgments

This study was supported by grants from The Norwegian Extrafoundation for Health and Rehabilitation, The Norwegian Diabetes Association, and The Throne Holst

Foundation. We thank Marit Sandvik, Gabor Zcibik and Annicke Stranda for skilled technical assistance. We also thank Dr. Petter Risoe for assistance with statistics, and Confocal Microscopy Core Facility Gaustad, Department of Pathology, Oslo University Hospital, Rikshospitalet, for making the confocal imaging possible.

Conflict of Interest

None declared.

References

- Rittirsch, D., M. A. Flierl, and P. A. Ward. 2008. Harmful molecular mechanisms in sepsis. *Nat. Rev. Immunol.* 8:776–787.
- Tabas, I. and C. K. Glass. 2013. Anti-inflammatory therapy in chronic disease: challenges and opportunities. *Science* 339:166–172.
- McInnes, I. B. and G. Schett. 2011. The pathogenesis of rheumatoid arthritis. *N. Engl. J. Med.* 365:2205–2219.
- Tracey, K. J. 2002. The inflammatory reflex. *Nature* 420:853–859.
- Ziegler-Heitbrock, H. W. 1996. Heterogeneity of human blood monocytes: the CD14⁺ CD16⁺ subpopulation. *Immunol. Today* 17:424–428.
- Rossol, M., H. Heine, U. Meusch, D. Quandt, C. Klein, M. J. Sweet, and S. Hauschildt. 2011. LPS-induced cytokine production in human monocytes and macrophages. *Crit. Rev. Immunol.* 31:379–446.
- Ziegler-Heitbrock, L., P. Ancuta, S. Crowe, M. Dalod, V. Grau, D. N. Hart, P. J. Leenen, Y. J. Liu, G. MacPherson, and G. J. Randolph, et al. 2010. Nomenclature of monocytes and dendritic cells in blood. *Blood* 116:e74–e80.
- Kolseth, I. B., J. Agren, V. Sundvold-Gjerstad, S. P. Lyngstadaas, J. E. Wang, and M. K. Dahle. 2012. 9-cis retinoic acid inhibits inflammatory responses of adherent monocytes and increases their ability to induce classical monocyte migration. *J. Innate. Immun.* 4:176–186.
- Fingerle, G., A. Pforte, B. Passlick, M. Blumenstein, M. Strobel, and H. W. Ziegler-Heitbrock. 1993. The novel subset of CD14⁺/CD16⁺ blood monocytes is expanded in sepsis patients. *Blood* 82:3170–3176.
- Ziegler-Heitbrock, L. 2007. The CD14⁺ CD16⁺ blood monocytes: their role in infection and inflammation. *J. Leukoc. Biol.* 81:584–592.
- Heron, M., J. C. Grutters, H. van Velzen-Blad, M. Veltkamp, A. M. Claessen, and J. M. van den Bosch. 2008. Increased expression of CD16, CD69, and very late antigen-1 on blood monocytes in active sarcoidosis. *Chest* 134:1001–1008.
- Ulrich, C., G. H. Heine, E. Seibert, D. Fliser, and M. Girndt. 2010. Circulating monocyte subpopulations with high expression of angiotensin-converting enzyme predict mortality in patients with end-stage renal disease. *Nephrol. Dial. Transplant.* 25:2265–2272.
- Belge, K.U., F. Dayyani, A. Horelt, M. Siedlar, M. Frankenberger, B. Frankenberger, T. Espevik, and L. Ziegler-Heitbrock. 2002. The proinflammatory CD14⁺ CD16⁺ DR⁺⁺ monocytes are a major source of TNF. *J. Immunol.* 168:3536–3542.
- Uhlin-Hansen, L., T. Eskeland, and S. O. Kolset. 1989. Modulation of the expression of chondroitin sulfate proteoglycan in stimulated human monocytes. *J. Biol. Chem.* 264:14916–14922.
- Kolset, S.O., L. Kjellen, R. Seljelid, and U. Lindahl. 1983. Changes in glycosaminoglycan biosynthesis during differentiation in vitro of human monocytes. *Biochem. J.* 210:661–667.
- Uhlin-Hansen, L., T. Wik, L. Kjellen, E. Berg, F. Forsdahl, and S. O. Kolset. 1993. Proteoglycan metabolism in normal and inflammatory human macrophages. *Blood* 82:2880–2889.
- Oynebraten, I., B. Hansen, B. Smedsrod, and L. Uhlin-Hansen. 2000. Serglycin secreted by leukocytes is efficiently eliminated from the circulation by sinusoidal scavenger endothelial cells in the liver. *J. Leukoc. Biol.* 67:183–188.
- Winberg, J. O., E. Berg, S. O. Kolset, and L. Uhlin-Hansen. 2003. Calcium-induced activation and truncation of pro-matrix metalloproteinase-9 linked to the core protein of chondroitin sulfate proteoglycans. *Eur. J. Biochem.* 270:3996–4007.
- Zernichow, L., M. Abrink, J. Hallgren, M. Grujic, G. Pejler, and S. O. Kolset. 2006. Serglycin is the major secreted proteoglycan in macrophages and has a role in the regulation of macrophage tumor necrosis factor- α secretion in response to lipopolysaccharide. *J. Biol. Chem.* 281:26792–26801.
- Reine, T.M., T. T. Vuong, T. G. Jenssen, and S. O. Kolset. 2014. Serglycin secretion is part of the inflammatory response in activated primary human endothelial cells in vitro. *Biochim. Biophys. Acta* 1840:2498–2505.
- Kolset, S. O. and G. Pejler, 2011. Serglycin: a structural and functional chameleon with wide impact on immune cells. *J. Immunol.* 187:4927–4933.
- Meen, A. J., I. Oynebraten, T. M. Reine, A. Duelli, K. Svennevig, G. Pejler, T. Jenssen, and S. O. Kolset. 2011. Serglycin is a major proteoglycan in polarized human endothelial cells and is implicated in the secretion of the chemokine GRO α /CXCL1. *J. Biol. Chem.* 286:2636–2647.
- Frankenberger, M., T. Sternsdorf, H. Pechumer, A. Pforte, and H. W. Ziegler-Heitbrock. 1996. Differential cytokine expression in human blood monocyte subpopulations: a polymerase chain reaction analysis. *Blood* 87:373–377.
- Niemann, C. U., J. B. Cowland, P. Klausen, J. Askaa, J. Calafat, and N. Borregaard. 2004. Localization of serglycin in human neutrophil granulocytes and their precursors. *J. Leukoc. Biol.* 76:406–415.

25. Livak, K. J. and T. D. Schmittgen, 2001. Analysis of relative gene expression data using real-time quantitative PCR and the 2(-Delta Delta C(T)) Method. *Methods* 25:402–408.
26. Grujic, M., T. Braga, A. Lukinius, M. L. Eloranta, S. D. Knight, G. Pejler, and M. Abrink. 2005. Serglycin-deficient cytotoxic T lymphocytes display defective secretory granule maturation and granzyme B storage. *J. Biol. Chem.* 280:33411–33418.
27. Zernichow, L., K. T. Dalen, K. Prydz, J. O. Winberg, and S. O. Kolset. 2006. Secretion of proteases in serglycin transfected Madin-Darby canine kidney cells. *FEBS J.* 273:536–547.
28. Uhlin-Hansen, L. and S. O. Kolset. 1988. Cell density-dependent expression of chondroitin sulfate proteoglycan in cultured human monocytes. *J. Biol. Chem.* 263:2526–2531.
29. Kolset, S. O., D. M. Mann, L. Uhlin-Hansen, J. O. Winberg, and E. Ruoslahti, 1996. Serglycin-binding proteins in activated macrophages and platelets. *J. Leukoc. Biol.* 59:545–554.
30. Graham, G. J., P. C. Wilkinson, R. J. Nibbs, S. Lowe, S. O. Kolset, A. Parker, M. G. Freshney, M. L. Tsang, and I. B. Pragnell. 1996. Uncoupling of stem cell inhibition from monocyte chemoattraction in MIP-1alpha by mutagenesis of the proteoglycan binding site. *Embo. J.* 15:6506–6515.
31. Toyama-Sorimachi, N., F. Kitamura, H. Habuchi, Y. Tobita, K. Kimata, and M. Miyasaka. 1997. Widespread expression of chondroitin sulfate-type serglycins with CD44 binding ability in hematopoietic cells. *J. Biol. Chem.* 272:26714–26719.
32. Oldberg, A., E. G. Hayman, and E. Ruoslahti. 1981. Isolation of a chondroitin sulfate proteoglycan from a rat yolk sac tumor and immunochemical demonstration of its cell surface localization. *J. Biol. Chem.* 256:10847–10852.
33. Skliris, A., V. T. Labropoulou, D. J. Papachristou, A. Aletras, N. K. Karamanos, and A. D. Theocharis. 2013. Cell surface serglycin promotes myeloma cells' adhesion to collagen type I and affects the expression of matrix metalloproteinases. *FEBS J.*
34. Weber, M., R. Hauschild, J. Schwarz, C. Moussion, I. de Vries, D. F. Legler, S. A. Luther, T. Bollenbach, and M. Sixt. 2013. Interstitial dendritic cell guidance by haptotactic chemokine gradients. *Science* 339:328–332.
35. Massena, S., G. Christoffersson, E. Hjertstrom, E. Zcharia, I. Vlodavsky, N. Ausmees, C. Rolny, J. P. Li, and M. Phillipson. 2010. A chemotactic gradient sequestered on endothelial heparan sulfate induces directional intraluminal crawling of neutrophils. *Blood* 116:1924–1931.