

ARTICLE

DOI: 10.1038/s41467-018-06252-8

OPEN

Nordic Seas polynyas and their role in preconditioning marine productivity during the Last Glacial Maximum

Jochen Knies^{1,2}, Denizcan Köseoğlu³, Leif Rise¹, Nicole Baeten¹, Valérie K. Bellec¹, Reidulv Bøe¹, Martin Klug¹, Giuliana Panieri², Patrycja E. Jernas^{2,4} & Simon T. Belt³

Arctic and Antarctic polynyas are crucial sites for deep-water formation, which helps sustain global ocean circulation. During glacial times, the occurrence of polynyas proximal to expansive ice sheets in both hemispheres has been proposed to explain limited ocean ventilation and a habitat requirement for marine and higher-trophic terrestrial fauna. Nonetheless, their existence remains equivocal, not least due to the hitherto paucity of sufficiently characteristic proxy data. Here we demonstrate polynya formation in front of the NW Eurasian ice sheets during the Last Glacial Maximum (LGM), which resulted from katabatic winds blowing seaward of the ice shelves and upwelling of warm, sub-surface Atlantic water. These polynyas sustained ice-sheet build-up, ocean ventilation, and marine productivity in an otherwise glacial Arctic desert. Following the catastrophic meltwater discharge from the collapsing ice sheets at ~17.5 ka BP, polynya formation ceased, marine productivity declined dramatically, and sea ice expanded rapidly to cover the entire Nordic Seas.

¹Geological Survey of Norway, NO-7491, Trondheim, Norway. ²CAGE - Centre for Arctic Gas Hydrate, Environment and Climate; Department of Geosciences, UiT The Arctic University of Norway, NO-9037, Tromsø, Norway. ³Biogeochemistry Research Centre, School of Geography, Earth and Environmental Sciences, University of Plymouth, Plymouth PL4 8AA, UK. ⁴Department of Marine Geology, Institute of Oceanography, University of Gdańsk, Al. Piłsudskiego 46, 81-378 Gdynia, Poland. Correspondence and requests for materials should be addressed to J.K. (email: jochen.knies@ngu.no)

Coastal polynyas on Arctic and Antarctic shelves today are widely recognized to be sites of deep water formation^{1,2} and data from both hemispheres have illustrated their importance as a significant driver of the Atlantic meridional overturning circulation (AMOC)³. A major source of bottom waters is found along the East Antarctic coastline in a myriad of coastal polynyas that form in response to strong katabatic winds originating from the adjacent ice masses⁴. High rates of sea ice growth and consequential ejection of salt in these polynyas contribute to the production of dense shelf waters (brines), and thus deep water renewal in the global ocean. Although this model was proposed initially to explain persistent ocean convection during past cold phases (stadials) in the glacial Nordic Seas⁵, it was subsequently questioned, since brine-enriched shelf waters are isotopically indistinguishable from deep water generated by ocean convection^{6,7}. More recently, however, Keigwin and Swift⁸ found evidence for glacial deep water in the western North Atlantic that may have been formed through enhanced sea ice growth rates and brine rejection in the Labrador Sea, potentially associated with polynya formation. In the Nordic Seas, Thornalley, et al.⁹ also discussed the possibility of limited deep-water formation as a consequence of brine rejection from coastal polynyas. The existence and location of these polynyas, however, remain unresolved.

In Antarctica, coastal polynyas are inferred to have occurred beyond the glacial ice-sheet margin, with their formation probably enhanced by offshore katabatic winds and amplified further by diurnal tides during the last glacial period and the Holocene^{10–12}. The presence of the grounded ice sheet at the shelf edge maintained the formation of coastal polynyas between ca. 25 and 19 ka¹³, which then became inactive when the ice sheet retreated. Apart from their importance for deep water formation, coastal polynyas adjacent to expansive ice sheets are also regional moisture sources^{11,14–16}. Further, they are recognized as key sites for enhanced primary and secondary productivity associated with sea-ice controlled seasonal nutrient supply during advance and retreat, and thus represent oases for higher-trophic life in an otherwise glacial desert¹⁷.

Corroboration of coastal polynyas as suppliers of moisture to the build-up of adjacent ice sheets, and as potential sea-ice factories that facilitate regional ventilation and primary productivity in the glacial Nordic Seas, requires confirmation of their existence through multi-proxy evidence preserved in the sedimentary archive. Since the Barents Sea shelf was fully glaciated during the Last Glacial Maximum (LGM) between 26.5 and 19 ka^{18–20}, the margins were preconditioned for the formation of coastal polynyas. Previously, the dominance of planktic and benthic foraminifera and the occurrence of the seasonal sea ice biomarker IP₂₅ in LGM sediments from the northern Barents Sea margin have been used to propose the katabatic wind-driven formation of coastal polynyas supported by upwelling of Atlantic-derived water masses^{15,16}. Meanwhile, at the western margin, advection of Atlantic water (AW) and seasonally sea ice free conditions prevailed during the LGM^{21,22}. Although no direct inferences of polynya formation have been made so far in this region, Bauch, et al.¹⁴ postulated that sub-surface Atlantic water advection into the Nordic Seas was possibly facilitated by polynyas.

In the present study, we combine multi-biological proxy data with sedimentary physico-chemical characteristics to show that coastal polynyas indeed existed along the entire Svalbard-Barents Sea margin during the LGM, based on the evidence of a highly dynamic sea ice cover coupled with enhanced plankton productivity adjacent to a grounded ice sheet at the continental shelf. In contrast to previous studies, we propose the existence of an open water corridor in front of the NW Eurasian ice sheet that was controlled, primarily, by a combination of strong katabatic

winds blowing seaward off the ice shelves and upwelling of relatively warm intermediate Atlantic water masses. This polynya activity along the entire continental margin of the Barents Sea was the ultimate reason for weak (but constant) ocean convection and persistence of higher-trophic life in otherwise heavily sea-ice covered Nordic Seas during the LGM. The duration of this polynya scenario is closely tied to the stability of the marine-based Svalbard-Barents Sea ice sheet (SBIS). Thus, with the onset of the SBIS deglaciation at ~19.5 ka, biological activity in the polynyas ceased, and finally stopped when the ice sheet collapsed at ~17.5 ka, triggering the formation of perennial sea ice cover over the entire Nordic Seas as a consequence of extreme fresh-water modulation of the surface ocean and significant weakening of the AMOC.

Results

Physiogeography and geological setting. The study area (Fig. 1) was mapped using multibeam echosounder (Kongsberg Simrad EM 710, 70–100 kHz range) by the Norwegian Mapping Authority (NMA) and the Norwegian Defence Research Establishment (FFI) in 2008–2009 as part of the Norwegian offshore seabed mapping program MAREANO (www.mareano.no)²³. During two cruises with RV *G.O. Sars* in 2012 and 2014, a gravity core (33-GC08; hereafter GC08) and a giant piston core (GS14-190-01PC; hereafter referred to as GS14-190) were retrieved from the same location on the upper continental slope in ~949 m water depth (Fig. 1, Supplementary Table 1). While sediments from both cores are used to establish the chronological framework, paleoenvironmental inferences are made from piston core GS14-190 only. In this study, we present data from the upper 20–700 cm core depth (0–20 cm interval was not properly recovered), representing ca. 15 to 32 ka BP. Fig. 1 illustrates the glacial character of the SW Barents Sea shelf. It has been glaciated multiple times during the Quaternary^{24,25}. During the LGM, SBIS waxed and waned over the shelf, with major ice streams that operated in cross-shelf troughs, including the Bear Island Trough (Fig. 1)^{20,26,27}. Discharge of large volumes of sediment and meltwater occurred during the SBIS collapse along with associated climate and ocean warming. As a consequence, the continental slope in the southwestern Barents Sea is characterized by multiple gullies that document the prevalence of glacial debris flows and mass-movement activity during glacials, and meltwater discharge during deglacial periods (Fig. 1)^{23,28}. The modern oceanographic setting is dominated by the Norwegian Atlantic Current (NAC), which transports water of Atlantic origin northward through the Norwegian Sea²⁹. North Atlantic Water is characterized by high salinity (>35‰) and temperature (>6 °C) at the mid-Norwegian margin, and is typically found on the upper slope shallower than ~700 m water depth^{29,30}.

Lithology, chronology and sedimentation rates. Visual inspection, X-ray photography, grain size analyses and physical properties have been used to describe the sediments of GS14-190 (Fig. 2). We have identified two types of sediment facies: Facies (1) Hemipelagic, silty-clay mud intercalated with ice-rafted debris (IRD) or dropstones with occasional signs of lamination. Silty, clay-rich sediments have wet bulk density <2 g/cm³, water content between 40 and 60%, and low magnetic susceptibility (MS ~50 10⁻⁵ SI). Sequences enriched in IRD are slightly denser (~2.1 g/cm³) and/or characterized by elevated MS values. Facies (2) This facies is more heterogenous with higher amounts of coarse-sand, higher density (2.2 g/cm³) and lower water content (~25–30%). The two short intervals around 442 and 540 cm with Facies 2 characteristics are interpreted as mass flow deposits. The core top (ca. 20–30 core depth cm) is sandy-rich and most likely a

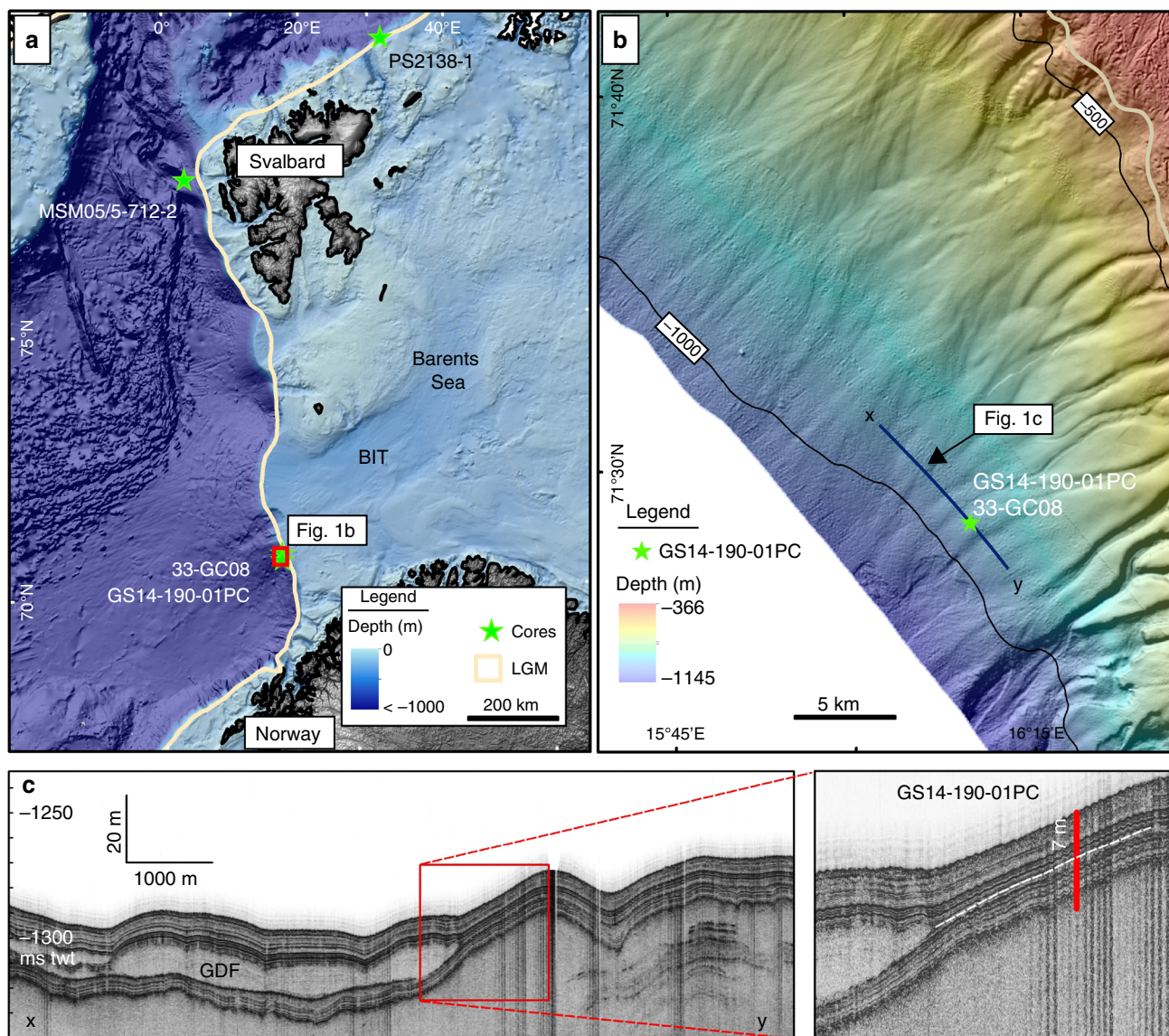


Fig. 1 Study area. **a** Present physiogeography with discussed sediment core locations. The outline of maximum extent of the Late Weichselian ice sheet is indicated¹⁸. **b** Site location with detailed bathymetry and shaded relief map with core positions GS14-190-01PC/33-GC08 and available seismic (TOPAS) line shown in **c**. Distinct morphological features of the slope are visible. Maximum ice sheet limit is shown (beige line). **c** High-resolution seismic data (TOPAS). Glacial Debris Flows (GDF) are interbedded with glaciomarine sediments. GDFs are characterized by acoustically uniform, transparent seismic signatures. Inset (red rectangle) shows position of piston core GS14-190-01PC penetrating the package of acoustically stratified sediments. The upper 700 cm of the core penetration is marked (stippled white line)

distal deposit of nearby reported sandwaves²³ (Fig. 2). This part of the core has not been sampled for this study, however.

The chronology of the upper section (20–700 cm) of GS14-190 is constrained by 6 accelerator mass spectrometry (AMS) radiocarbon datings obtained from tests of planktic or mixed benthic and planktic foraminifera (Table 1). The age model is further supported by 6 AMS radiocarbon datings of bivalve shells (*Thyasira* sp.) and mixed benthic and planktic foraminiferal assemblages from parallel core GC08 (Table 1). All AMS ¹⁴C dates were calibrated to calendar ages (cal. kyr BP) by applying the Calib7.1 program and the Marine13 calibration curve³¹. No local reservoir age ($\Delta R = 0$) was applied. We are aware of large uncertainties in reservoir ages in the Nordic Seas during the LGM and early deglaciation^{9,32} and the consequence of younger ages when applying local reservoir ages between $\Delta R = 0$ to 400–500. Here, we elected to use $\Delta R = 0$ to enable us to make a direct comparison to other key records from the North Atlantic and

Nordic Seas. To generate a common depth model for both cores, we used the XRF Ca records to identify several tie-points (0–5) (Fig. 3, Table 2) using the AnalySeries software³³, thus permitting the transfer of AMS ¹⁴C dates in GC08 into the age model of GS14-190 (Table 3). The age-depth model for core GS14-190 was generated using the Bayesian age-modeling (Bacon) approach on 12 AMS ¹⁴C dates (Bacon v2.2)³⁴ (Fig. 4).

Sedimentological and geochemical proxies. The stratigraphic framework of GS14-190 is supported further by the $\delta^{18}\text{O}$ record of planktic foraminifera *Neogloboquadrina pachyderma* sinistral (sin.). The LGM is characterized by the heaviest $\delta^{18}\text{O}$ values (ranging from 4.9‰ to 5.2‰) and rapid $\delta^{18}\text{O}$ depletion during the deglacial phase at ~17.5 ka BP (Fig. 5). The seasonal sea ice proxy IP₂₅ is particularly evident in all LGM and deglacial samples (Fig. 5). Biosynthesized by certain diatoms in the underside

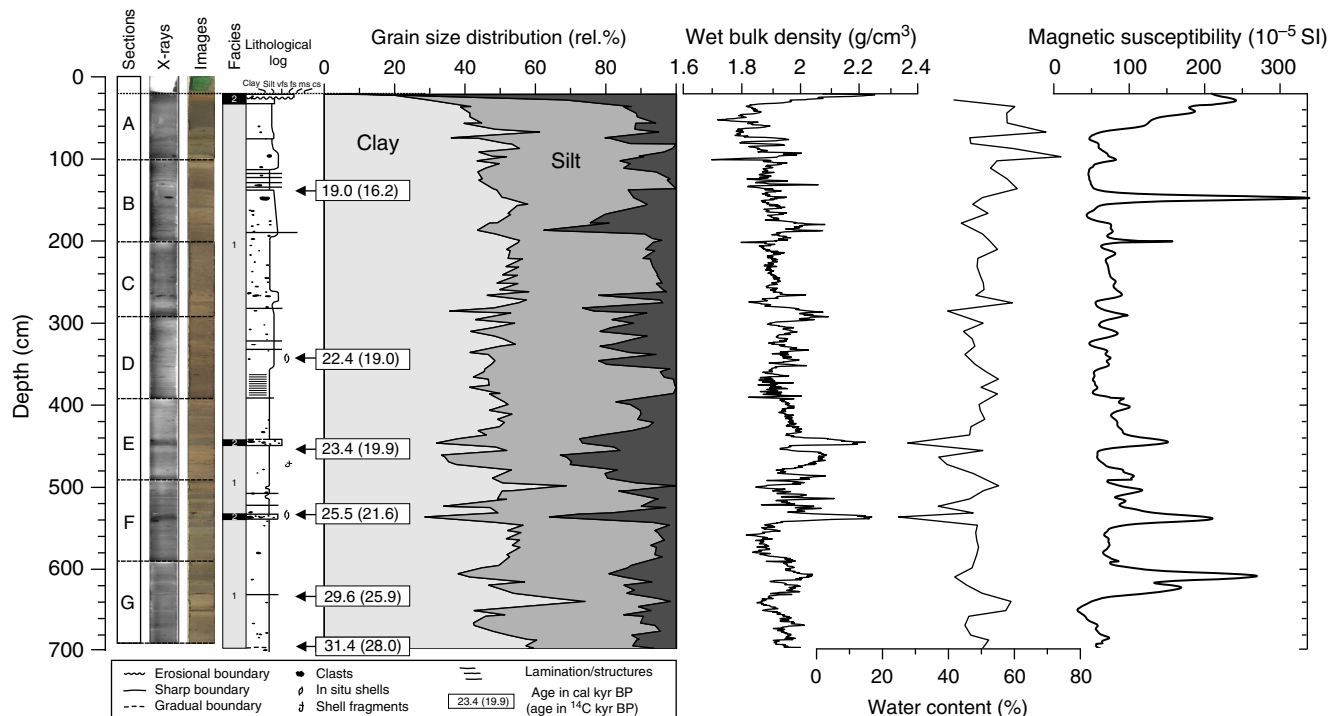


Fig. 2 Sedimentological and physical properties of GS14-190-01PC (20–700 cm). Available calibrated radiocarbon AMS ¹⁴C datings (uncalibrated ages in parenthesis) are displayed (Table 1)

Table 1 AMS ¹⁴C datings in cores 33-GC08 and GS14-190-01PC

Laboratory code	Core no.	Core depth original (cm)	Core depth converted (cm) ^a	¹⁴ C age (yrs BP)	Error	Carbon source	δ ¹³ C (‰)	2σ max. age (cal. yrs BP)	2σ min. age (cal. yrs BP)	Median (cal. yrs BP)	Error ± 1σ
UBA-21626	33-GC8	17.5	21.6	13007	±65	Mixed benthic/planktic	-2.5	15130	14314	14800	77
UBA-21157	33-GC8	35	41.8	13447	±49	<i>Thyasira</i> sp.	-9.5	15757	15273	15514	64
UBA-21627	33-GC8	64.5	75.9	15510	±82	Mixed benthic/planktic	-2	18521	18002	18272	92
UBA-30880	GS14-190, core B, 37.5 cm	137.6	137.6	16183	±108	Planktic forams	-6.1	18720	19258	18966	116
UBA21482	33-GC8	169	196.2	16516	±84	Mixed benthic/planktic	-2.2	19606	19074	19360	93
UBA-21624	33-GC8	227	268.7	17776	±94	Mixed benthic/planktic	-3.3	21193	20579	20870	103
UBA-21625	33-GC8	244	292.5	17990	±82	Mixed benthic/planktic	-3.6	21473	20868	21164	92
UBA-21639	GS14-190, core D, 46 cm	337.5	337.5	18950	±83	Mixed benthic/planktic	-0.4	22550	22051	22358	93
UBA-30879	GS14-190, core E, 63 cm	454.2	454.2	19879	±161	Mixed benthic/planktic	-3.8	22935	23811	23367	166
UBA-21638	GS14-190, core F, 41.5 cm	532.5	532.5	21607	±86	Mixed benthic/planktic	-0.5	25714	25222	25484	95
UBA-30878	GS14-190, core G, 42 cm	632.6	632.6	25939	±343	Planktic forams	-1.5	28805	30518	29611	345
UBA-30877	GS14-190, core H, 4 cm	694.4	694.4	27959	±428	Mixed benthic/planktic	-0.1	30801	32494	31407	430

^aIndicates converted core depth for GC08 outlined in Table 3

of seasonal Arctic sea ice³⁵, IP₂₅ is commonly used to reconstruct seasonal changes of Arctic sea ice coverage including during the LGM and earlier glacials/interglacials^{36,37}. Despite strong bottom current activity in the region during modern times, an

allochthonous IP₂₅ signal, potentially resulting from lateral sediment transport, can be ruled out since the occurrence of this biomarker in surface sediments from across the Barents Sea (and neighboring regions) reliably reflects the overlying sea ice

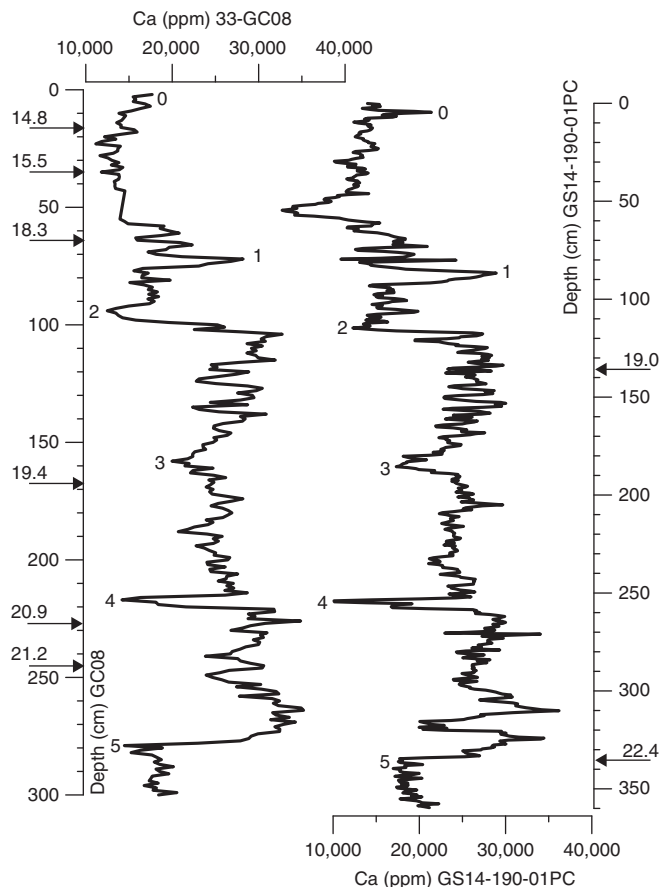


Fig. 3 X-ray fluorescence records of calcium (Ca) concentrations (ppm) in 33-GC08 and GS14-190-01PC against respective core depths (cm). AMS ¹⁴C (calibrated) datings for each core are shown (see Table 1). Numbers 1-5 indicate correlation tie points (Table 2) between the cores to establish a common depth scale

Table 2 Different depths of correlation tie points 1-5 in cores 33-GC08 and GS14-190-01PC based on XRF-Ca records		
Tie point number	Core GS14-190 depth (cmbfsf)	Core GC08 depth (cmbfsf)
0	0.1	2
1	87.1	72.2
2	115.2	94.8
3	185.9	160.0
4	253.8	216.0
5	333.9	278.7

conditions. Thus, absent IP₂₅ has been reported for sites of year-round ice free conditions (including those close to the GS14-190 core site). Relatively low concentrations are found close to the winter sea ice margin, with highest abundances in regions of more extensive seasonal sea ice cover, which are mainly >76°N³⁸ (Supplementary Figure 1). As such, vertical transport dominates the IP₂₅ sedimentary signal across the study region. In GS14-190, highest IP₂₅ concentrations occur during the LGM, with lower values before and after. The open marine biomarker dinosterol mainly follows the variability in the IP₂₅ record during the LGM (Fig. 5), while the number of planktic foraminifera is also highest during the LGM, consistent with the widely observed elevated biogenic calcite content in LGM sediments along the entire

Table 3 Age model based on available AMS ¹⁴C dates in cores 33-GC08 and GS14-190-01PC on one common depth scale (GS14-190-1PC)

Age × 1000 (cal yrs BP)	GC08 (depth cm)	GS14-190 (depth cm)	GS14-190 (correlated depth)
14.80	17.5		21.6
15.51	35		41.8
18.27	64.5		75.9
18.97		137.6	137.6
19.36	169		196.2
20.87	227		268.7
21.16	244		292.5
22.36		337.5	337.5
23.37		454.2	454.2
25.48		532.5	532.5
29.61		632.6	632.6
31.41		694.4	694.4

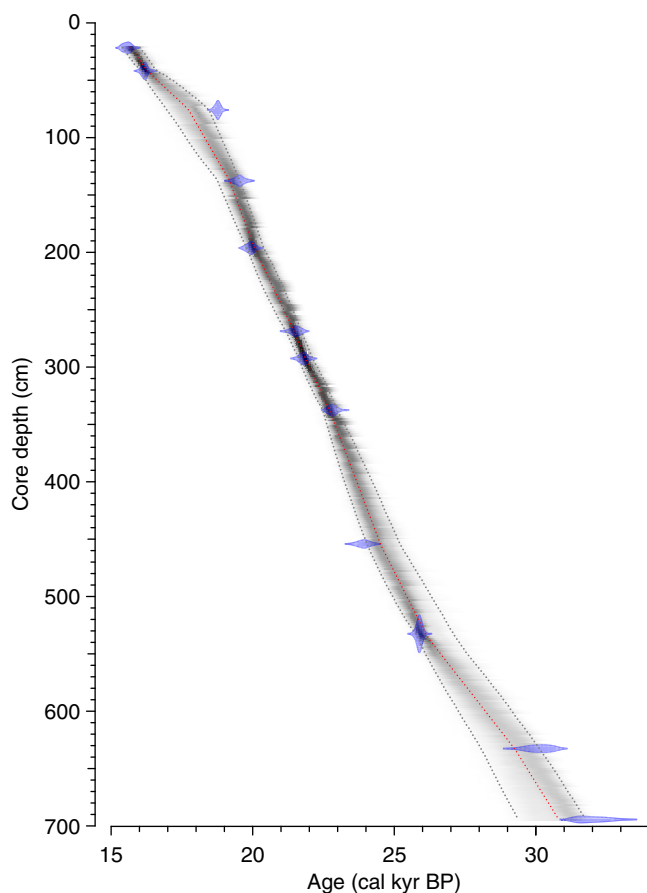


Fig. 4 Age model. Age-depth relationship of the upper 700 cm of sediment core GS14-190-01PC using a Bayesian age modeling (Bacon v2.2) approach³⁴ on 12 AMS ¹⁴C dates

Barents Sea continental margin^{21,39-41}. Both IP₂₅ concentration and planktic foraminifera drop to minimal values during the initial deglaciation (Fig. 5). A gradual increase in dinosterol and planktic foraminifera occurs towards the final deglacial phase. IRD supply is reflected by the coarse (> 250 μm) fraction and the high-resolution Zr/Al record. Higher proportions of IRD are observed during the middle to late LGM and the initial deglaciation. The most prominent IRD pulse is centered at ~19.0 ka BP (Fig. 5). All data are available in Supplementary Table 2.

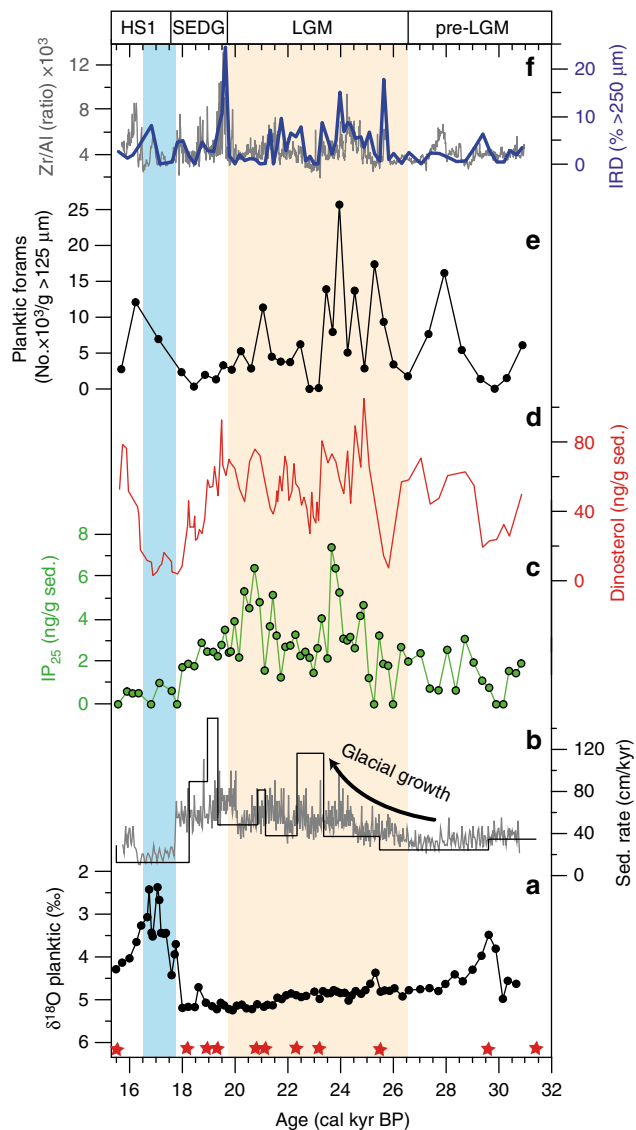


Fig. 5 Proxy data of sediment cores GC14-190-01PC for the late glacial period (ca. 31–15 cal. kyr BP). **a** Planktic $\delta^{18}\text{O}$ (‰) measured on *Neogloboquadrina pachyderma* sin. **b** Sedimentation rates (cm/kyr) inferred from Bayesian age-depth modeling (Bacon v2.2) (black line) and linear interpolation (gray line) between 11 AMS ^{14}C dates (red asterisks at bottom). **c** IP $_{25}$ concentration (ng/g Sed.) (green dots). **d** Dinosterol concentration (ng/g Sed.). **e** Number of planktic foraminifera in coarse fraction (>125 μm) in thousands. **f** Ice rafted debris (IRD) inferred from % of >250 μm coarse fraction (blue line) and XRF based Zr/Al ratio (gray line). HS1: Heinrich Stadial 1, SEDG: Shelf Edge Deglaciation, LGM: Last Glacial Maximum (beige colored)¹⁹. The bluish rectangle marks the freshwater release during Svalbard Barents Sea ice sheet collapse

Discussion

Full glaciation of the SW Barents Sea shelf during the LGM is illustrated by the presence of glacial debris flows along the continental margin²⁴. The synchronized age of these mass transport deposits with the occurrence of IRD layers in dated deep sea sediments reveal a western shelf edge position of the ice sheet at ~24–23 ka BP^{20,42}. Inception and progressive advance, however, remain poorly constrained and built largely upon the geomorphological footprint of the advancing ice sheet towards the shelf break²⁶. Our new data from the SW Barents Sea margin suggest a smooth pattern of gradual ice build-up. A fourfold

increase in sedimentation rates (20–80 cm kyr $^{-1}$) from glacial inception at ~30 ka BP to the LGM (~21 ka BP), superimposed by short events of maximum rates during first shelf edge glaciation (24–23 ka BP) and initial ice sheet collapse (~20–19 ka BP) indicate a slow, but continuous movement of the ice sheet towards the shelf break (Fig. 5). The latter is evident by enhanced IRD supply at the start of the LGM (~25 ka BP), suggesting increased iceberg calving rates close to the shelf edge (Fig. 5). The positioning of moderately abundant IP $_{25}$ concentrations in pre-LGM deposits indicate the presence of the polar front at the study area and, therefore, subduction of Atlantic water masses below seasonally sea ice covered surface waters. The accompanying high abundance of calcareous organisms^{21,39} would have resulted from the prevalence of sub-surface Atlantic water masses penetrating the eastern Nordic Seas below seasonal to perennial sea ice cover^{14,43}. In contrast, further north, and towards the Fram Strait, sea ice cover was more permanent and primary productivity significantly reduced between 28 and 26 ka BP⁴⁴.

With the grounded ice sheet approaching the shelf edge, as shown by the steadily increasing sedimentation rates and frequent IRD delivery, IP $_{25}$ and dinosterol concentrations both increase significantly (Fig. 5), however, with some excursions to lower values paralleled by a decline in planktic foraminifera (Fig. 5). The high abundance of IP $_{25}$, dinosterol and calcareous organisms indicates significant primary productivity along an active sea ice margin. The latter requires seasonal open water conditions, which we argue constrains the presence of a grounded ice sheet at the shelf edge to maintain formation of coastal polynyas. Short-term phases with lower sea ice diatom blooms and reduced phytoplankton growth reflect more extensive sea ice cover. Our proposal of widespread polynya occurrence in front of the SBIS is supported further by high IP $_{25}$ concentrations in marine biomarker- and calcareous-rich deposits along the western Svalbard margin (Fig. 6)⁴⁴. Along the entire western and northern Svalbard-Barents Sea margin (Fig. 7), opposing effects of katabatic winds—blowing sea ice westwards, away from the ice sheet—and an expanded polar front in the Nordic Seas—pushing sea ice limits eastwards towards the ice sheets—created a marginal ice zone that allowed for high production of sea ice diatoms, marine phyto- and zooplankton, and (limited) deep water formation. Coupled to this, polynya formation would also have been sustained by the aforementioned ongoing upwelling of inflowing warm sub-surface Atlantic water. The presence of a widespread sea ice-free corridor in front of the SBIS during the LGM was spatially constrained, however, with near perennial sea ice cover further west, as evident from poorly ventilated deep waters and decreased benthic $\delta^{13}\text{C}$ values in the Nordic Seas (Fig. 6)^{9,14}. This scenario contrasts earlier inferences of pulse-like heat transport by inflowing Atlantic water that controls eastern Nordic Seas sea ice dynamics^{21,44}.

In a new Eurasian ice sheet model for the last deglaciation, Patton, et al.⁴⁵ revealed the complexity of the asynchronous deglaciation pattern of the marine-based SBIS and its sensitivity to climate and oceanic forcing, as well as internal ice dynamics. However, uncertainties remain as the empirical records used by the model are fragmentary and poorly constrained, chronologically. To date, the most robust timing for the initial destabilization of the SBIS is established for the western Svalbard margin, with age control of IRD pulses and the onset of hemipelagic sedimentation on the shelf at ~20 ka BP^{46–48}. In the present study, we confirm this timing of regional ice sheet disintegration for the SW Barents Sea margin. Distinct pulses of IRD and highest linear sedimentation rates (~140 cm ka $^{-1}$) occur between ~20–19 ka BP and suggest enhanced iceberg calving and debris release from the retreating grounding line (Fig. 5). This

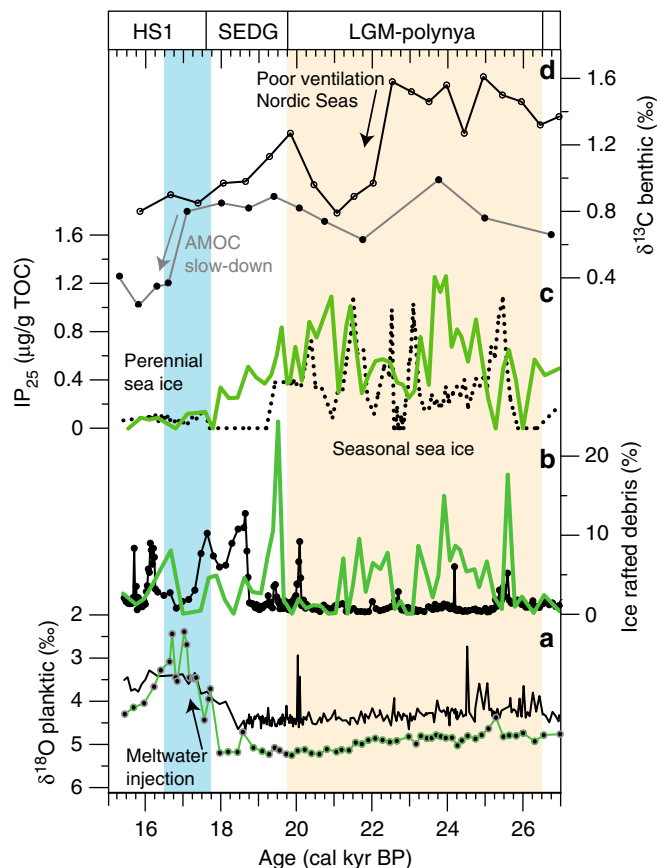


Fig. 6 Sea ice and ice sheet dynamics along the western/northern Barents Sea margin during the LGM. **a** Planktic $\delta^{18}\text{O}$ (in ‰) and **b** ice-rafted debris (% >250 μm) records from the southwestern (this study: green) and northern (PS2138-1: black) Barents Sea margin⁵². **c** IP_{25} in sediments off northwestern Svalbard (MSM05/5-712-2) (dotted line)⁴⁴ and southwestern Barents Sea (green line) (this study). **d** Benthic foraminifera $\delta^{13}\text{C}$ in the Norwegian Sea (PS1243; black)¹⁴ and the North Atlantic (ODP Site 980; gray)⁵⁹. Timing of ventilation changes in Nordic Seas and AMOC slow down is marked by arrows. See references for exact location of these cores. Legend of colored rectangles as in Fig. 5

observation agrees with previous inferences of an open corridor between the SBIS and Fennoscandian ice sheets at ~ 18.6 ka BP⁴⁹. This initial instability is likely induced by increasing northern summer insolation¹⁹ – a fact that has also been advocated for the ice sheet disintegration on the Antarctic Peninsula and East Antarctica in the southeastern Weddell Sea⁵⁰.

The commencement of ice sheet disintegration in the SW Barents Sea is not, however, followed by large-scale meltwater injections into the Norwegian Sea. Indeed, heavy $\delta^{18}\text{O}$ (~ 5 ‰), slightly reduced IP_{25} and dinosterol concentration, as well as moderately abundant planktic foraminifera do not support proximal water mass perturbations (Fig. 5). Although a conspicuous $\delta^{18}\text{O}$ depletion around 20–19 ka BP (Fig. 6) may be correlated to other records in the Nordic Seas⁵¹, minor meltwater injections had no impact on polynya stability. In contrast, further collapse of the northern SBIS, as documented by massive IRD pulses starting ~ 19 ka BP (Fig. 6)⁵², changed the physical conditions for perennial polynya activity in the northern region. Massive iceberg and freshwater export through the Fram Strait (Fig. 6) and sub-surface cooling west of Svalbard⁴¹ facilitated permanent sea ice cover between ~ 19 and 17.6 ka BP⁴⁴, preventing any polynya activity, as confirmed by the absence of IP_{25} (Fig. 6)⁴⁴ and reduced phyto- and zooplankton productivity

indicators⁴¹. In the SW Barents Sea, decreased ventilation of Atlantic intermediate waters and progressive surface cooling in the study area³⁹ between 18.3 and 17.7 ka BP may have increased the sea ice concentration, as indicated by a gradual decline in IP_{25} (Fig. 6). However, this climate deterioration was not severe enough to prevent polynya activity entirely. A likely explanation for the variability in sea ice conditions along the western Svalbard/Barents Sea margin could be the Atlantic water current-induced northward transport of iceberg armadas released by the southwestern SBIS in concert with increased iceberg export from the retreating northern SBIS southwards via Transpolar Drift through the Fram Strait. High densities of icebergs west of Svalbard likely facilitated sea ice growth as a result of lower sea-surface temperatures induced by latent heat of melting⁵³, which ultimately would have resulted in long-lasting permanent sea ice coverage in the Fram Strait^{44,54}. Nonetheless, intense IRD deposition due to massive iceberg calving along the SBIS margin between 20 and 17.5 ka confirms the significant contributions of IRD-rich sediments derived from the SBIS to the IRD belt in the North Atlantic prior to the Heinrich Stadial 1 (HS1; ~ 17.5 ka)^{55,56}.

Conditions changed dramatically when the marine-based SBIS collapsed. With gradually increasing summer insolation, and increases in atmospheric temperature and sea level¹⁹, the ice sheet disintegrated rapidly after ~ 17.6 ka, with a modeled rate of ~ 670 gigatonnes per year (Gt a^{-1})⁴⁵. This enhanced rate is reflected in a large $\delta^{18}\text{O}$ planktic anomaly in the study area⁵⁷ and indicates a massive meltwater injection into the eastern Nordic Seas⁵ and Arctic Ocean²² during the onset of HS1 (Fig. 6). The southwestern SBIS has often been discussed as a major source of freshwater perturbations in the Nordic Seas during HS1^{5,51,57,58}, however, until now, there has been a paucity of direct indication for such changes due to the prevalence of mass flow deposits along the margin. The data presented herein, however, constitute further evidence of massive meltwater injections in the eastern Nordic Seas likely being sourced from the collapsing southwestern SBIS. In addition, freshwater outburst from ice-dammed lakes in NW Russia associated with the SBIS collapse may have contributed to the freshwater $\delta^{18}\text{O}$ anomaly as well, which caused significant perturbations of the AMOC during the last deglaciation⁵⁹. Indeed, the response of the sea ice coverage to this freshwater outburst was immediate, with consistently low IP_{25} and dinosterol concentrations indicative of near-perennial sea ice cover and an inactive coastal polynya in front of the retreating SBIS (Fig. 5). IP_{25} concentration also remained consistently low along the entire western SBIS margin during HS1 (Fig. 6), implying mainly severe sea ice conditions relative to the LGM, which likely extended to the southern end of the Norwegian Sea⁶⁰, and a significant weakening of the AMOC during HS1^{9,59,61} illustrated by a considerable decrease in North Atlantic benthic $\delta^{13}\text{C}$ values (Fig. 6). Due to the perennial sea ice coverage throughout the Nordic Seas during HS1, basin-wide accumulation of heat – likely a result of subdued warm Atlantic water inflow⁶², and/or isolation of the deep Nordic Seas⁹ – was probably a crucial pre-requisite for the recovery of the climate system, as expressed by the gradual rise in phyto- and zooplankton in surface waters at the end of HS1 (Figs. 5 and 6).

From a broader perspective, the finding of large scale polynyas in front of LGM ice sheets in this study support recent inferences by Keigwin and Swift⁸ that formation of glacial bottom waters in the western North Atlantic may be derived from sea ice controlled brine rejections within polynyas facilitated by katabatic winds blowing off the Laurentide Ice Sheet. Moreover, the prevalence of large-scale polynyas in front of these growing ice sheets during the LGM presented an ideal moisture supply to sustain such growth. This information is crucial for validating numerical

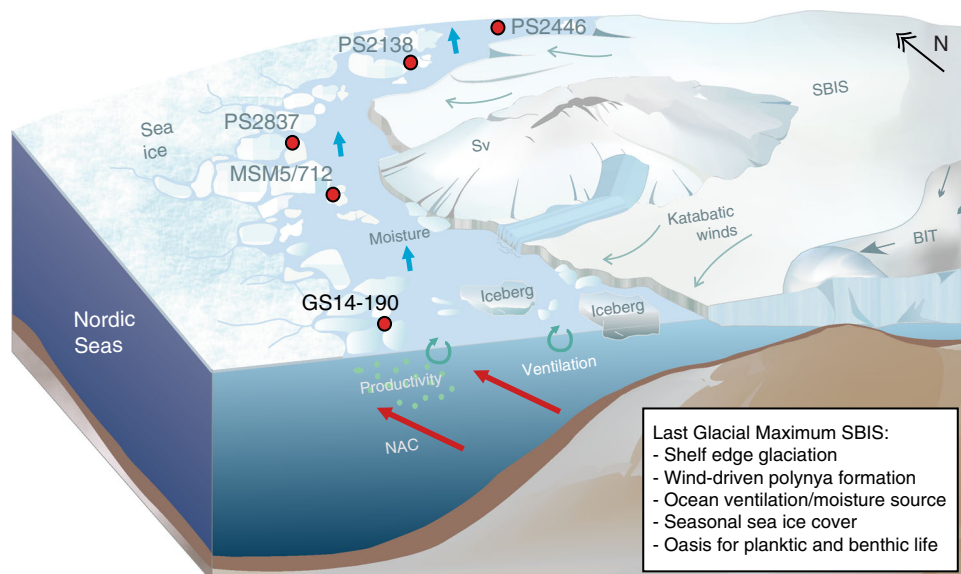


Fig. 7 Schematic illustration of the polynya activity in front of the western and northern Svalbard-Barents Sea ice sheet during the LGM as reconstructed from 5 sediment proxy records (Supplementary Table 1). Polynya activity is constrained by relatively high sea-ice diatom (IP_{25}), marine organic phytoplankton and calcareous zooplankton production in all displayed sediment cores (this study)^{16,44,54,69,70} supported by sub-surface/intermediate inflow of Atlantic-water-derived waters (NAC) and katabatic winds. Coastal polynyas along the entire Svalbard-Barents Sea margin provided a constant source of moisture that sustained build-up of glacial ice, ventilation of deeper waters in the glacial Nordic Seas, and remained a refuge for marine and higher trophic terrestrial life in a polar desert. Sv: Svalbard, SBIS: Svalbard-Barents Sea Ice Sheet, BIT: Bear Island Trough, NAC: North Atlantic Current

models on ice-sheet configuration²⁰ and provides an important baseline to test ice sheet dynamics during past glacial/interglacial cycles⁶³. Furthermore, the possibility that wind-driven polynyas in front of large-scale marine-based ice sheets are potential refuges for higher-trophic life in the Arctic during glacial times requires further attention, particularly after recent findings in Antarctica (i.e., the Ross Sea) where marine and terrestrial faunal changes were found to be highly correlated with sea ice dynamics in coastal polynyas¹². It has also been postulated that the existence of polynyas during glacial periods was essential for the survival of marine and terrestrial life¹⁷. Indeed, previous reports of unusually high abundances of the benthic foraminifer *Cassidulina neoteretis* and smaller-sized planktonic specimens of *Turborotalita quinqueloba* in LGM sediments off western Svalbard^{14,40,48,51} indicate the existence of a productive benthic oasis in an otherwise glacial desert at this time, with nutrient supply and organic matter production in a marginal ice zone supported by upwelling of nutrient-rich Atlantic-derived water masses.

Hence, we propose the presence of large-scale coastal polynyas in front of the extensive NW Eurasian ice sheets during the Last Glacial Maximum in an otherwise Arctic desert, characterized by a perennial sea-ice cover. This conclusion is built on the co-existence of high amounts of sea-ice algae, primary and secondary plankton producers, and a high diversity of benthic and planktic fauna^{14,40,48,51} in an environment that is characterized by a marginal sea ice zone in close proximity to the Svalbard-Barents Sea continental margin and upwelling of nutrient-rich, sub-surface flowing Atlantic waters during this period. Polynya activity likely collapsed when ice sheets disintegrated and freshwater injections to the eastern Nordic Seas caused rapid sea ice expansion in the entire Nordic Seas and AMOC weakening during Heinrich Stadial 1, reflected by a significant $\delta^{18}O$ anomaly and near complete cessation of sympagic and pelagic productivity. Overall, our findings confirm the crucial importance of coastal polynyas for survival of planktic and benthic species during otherwise harsh glacial conditions in the Arctic.

Methods

Sedimentological properties. Whole core measurements, i.e. wet bulk density (WBD) and magnetic susceptibility (MS) were conducted on the gravity and piston cores using the Standard MSCL-S core logger (GeoTek Ltd., UK) at 1 cm resolution with 5 s measurement time. MS measurements for whole cores were done with a Bartington MS2C loop sensor with 130 mm coil diameter. For control of the MS2C sensor, a certified sample piece with known magnetic susceptibility was measured. After lengthwise splitting and surface cleaning core surface images were taken with the GeoScan IV color line-scan camera. The camera was equipped with a Nikon AF Nikkor 50 mm f/1.8D lens and three detectors using three 2048 pixel charge-coupled device CCD arrays for red, green and blue light. The core surface was continuously imaged with 100 μ m down and cross core resolution. Each core section was measured with an X-rite ColorChecker as reference for basic color control.

X-ray images (XRI) of split cores were taken with the Geotek MSCL-XCT (Geotek Ltd., UK). The device is equipped with a Thermo Kevex PSX10-65W X-ray source (Thermo Fisher Scientific Inc., USA) and a Varian PAXScan 2520 V X-ray detector (Varian Medical Systems, Inc., USA). Voltages of 87 and 120 kV and electric currents of 125 and 140 μ A were used for imaging of both cores.

The grain size distribution (0.4 μ m – 250 μ m) was determined with a Coulter LS 200. To prevent charging and agglomeration of particles, de-carbonated samples were treated with 5% sodium pyrophosphate ($Na_4P_2O_7 \times 10H_2O$, MerckPA) and sonicated. To compensate for elevated silt contents compared to traditional methods (Pipette and Sedigraph), we applied the method published by Rise and Brendryen⁶⁴. Grain sizes >250 μ m were determined by dry sieving on a duplicate of each sample (relative error $\pm 10\%$) and identified as ice-rafted debris (IRD).

Inorganic and organic geochemistry. X-Ray fluorescence (XRF) core logging was carried out with the Standard MSCL (MSCL-S) core logger (GeoTek Ltd., UK) and an attached DELTA Handheld XRF sensor. The XRF sensor is equipped with a 4-W Rh Tube anode and Si drift detector. Prior to core measurements the XRF sensor was standardized and SRM 2710a Montana soil I standard sample⁶⁵ was stationary measured for sensor-control purposes. Down core XRF measurements were taken incrementally along the longest axis in the centre of the split core surfaces with 0.5 cm steps. Two measurements in succession with 40 keV and 10 keV currents and 10 s exposure time each provided spectra covering chemical elements from Mg to Pb, of which only the zirconium (Zr), aluminum (Al), and calcium (Ca) concentrations (ppm) were used for this study.

Analyses of total (TC) and organic carbon (C_{org}) were performed with a LECO SC-632. For TC determination subsamples of 300–400 mg were combusted at 1350 $^{\circ}C$ and the release of CO_2 determined. For C_{org} analysis, sub-samples of 400–450 mg were placed in carbon-free pervious ceramic combustion boats. These were placed on a heating plate at 50 $^{\circ}C$ (± 5 $^{\circ}C$) and treated with 10 vol.% hydrochloric acid (HCl) to remove inorganic carbon (carbonate) and subsequently rinsed with distilled water and dried in the drying oven prior to analysis. Results

are given in weight percentage (wt. %) and the standard deviation of the TC and C_{org} measurements based on the repeated measurement of a standard was ± 0.026 wt. % (1σ , $n = 8$) and ± 0.028 wt. % (1σ , $n = 11$), respectively.

The sea ice biomarker IP₂₅⁶⁶ was quantified following addition of an internal standard (9-octylheptadec-8-ene, 0.1 μ g) to freeze-dried sediments (ca. 1–3 g), extraction (2:1 v/v dichloromethane:methanol; 3 \times 2 mL) and purification of extracts using silica column chromatography (hexane, 6 mL). Further purification to remove saturated hydrocarbons was achieved using Ag-ion chromatography (Supelco Discovery[®] Ag-Ion; ca. 0.12 g; 1 mL of hexane), followed by separate elution of unsaturated hydrocarbons including IP₂₅ using acetone (2 mL). Sterol fractions were obtained following internal standard addition (5 α -androstane-3 β -ol, 10 μ L; 10 μ g mL⁻¹) to freeze-dried sediments, saponification (2 mL of 5% m/v KOH in 9:1 methanol:milliQ water; 60 min; 70 °C) and back extraction into hexane (3 \times 2 mL). Silica column chromatography was used to remove impurities, including hydrocarbons and long-chain ketones (7:3 DCM:hexane; 6 mL), and for sterol elution (4:1 hexane:methyl acetate; 6 mL). Partially purified IP₂₅- and sterol-containing fractions were analyzed using gas chromatography-mass spectrometry (GC-MS) according to established methods⁶⁷. IP₂₅ and sterols were identified by comparison of total ion current (TIC) mass spectra and retention indices to those of authentic standards or those presented previously⁶⁸. Biomarker quantification was carried out in Selective Ion Monitoring (SIM) mode by comparing the peak areas of molecular ions of individual biomarkers to those of the internal standards, followed by correction for sediment mass and ion fragmentation efficiency. In the current study, we confine the sterol analysis to that of dinosterol.

For planktic foraminiferal concentration/abundance the sediment core was sampled in ca. 20 cm intervals. Approximately 300 specimens from >125 μ m fraction were picked and identified per sample, using a micro-splitter if the number of foraminifera was higher. Only one sample contains less than 200 planktic foraminifera (depth 368 cm); one sample (depth 345 cm) is barren of foraminifera. For oxygen stable isotope analyses ($\delta^{18}O$), monospecific planktic foraminifera *Neogloboquadrina pachyderma* (sinistral (sin.)) were hand-picked from the >100 μ m size fraction. For each interval, 5–10 specimens were analyzed. $\delta^{18}O$ values were determined using a Thermo Scientific MAT253 mass spectrometer coupled to a Finnigan Gasbench II at UiT, The Arctic University of Norway in Tromsø. Results are reported relative to the Vienna Standard Mean Ocean Water (VSMOW) standards in per mil (‰) notation. External precision was $\pm 0.07\%$ based on analysis of NBS-19.

Data availability

All data are given in Supplementary Table 2.

Received: 26 March 2018 Accepted: 28 August 2018

Published online: 27 September 2018

References

- Foster, T. D. Abyssal water mass formation off the eastern Wilkes Land coast of Antarctica. *Deep-Sea Res. Part I-Oceanogr. Res. Pap.* **42**, 501–522 (1995).
- Orsi, A. H. & Wiederwohl, C. L. A recount of Ross Sea waters. *Deep-Sea Res. Part II Top. Stud. Oceanogr.* **56**, 778–795 (2009).
- Kuhlbrodt, T. et al. On the driving processes of the Atlantic meridional overturning circulation. *Rev. Geophys.* **45**, RG2001 (2007).
- Buffoni, G., Cappelletti, A. & Picco, P. An investigation of thermohaline circulation in Terra Nova Bay polynya. *Antarct. Sci.* **14**, 83–92 (2002).
- Dokken, T. M. & Jansen, E. Rapid changes in the mechanism of ocean convection during the last glacial period. *Nature* **401**, 458–461 (1999).
- Rasmussen, T. L. & Thomsen, E. Stable isotope signals from brines in the Barents Sea: Implications for brine formation during the last glaciation. *Geology* **37**, 903–906 (2009).
- Mackensen, A. & Schmiedl, G. Brine formation recorded by stable isotopes of Recent benthic foraminifera in Storfjorden, Svalbard: palaeoceanographical implications. *Boreas* **45**, 552–566 (2016).
- Keigwin, L. D. & Swift, S. A. Carbon isotope evidence for a northern source of deep water in the glacial western North Atlantic. *Proc. Natl Acad. Sci. USA* **114**, 2831–2835 (2017).
- Thornalley, D. J. R. et al. A warm and poorly ventilated deep Arctic Mediterranean during the last glacial period. *Science* **349**, 706–710 (2015).
- Griffiths, S. D. & Peltier, W. R. Modeling of polar ocean tides at the last glacial maximum: amplification, sensitivity, and climatological implications. *J. Clim.* **22**, 2905–2924 (2009).
- Smith, J. A., Hillenbrand, C. D., Pudsey, C. J., Allen, C. S. & Graham, A. G. C. The presence of polynyas in the Weddell Sea during the Last Glacial Period with implications for the reconstruction of sea-ice limits and ice sheet history. *Earth. Planet. Sci. Lett.* **296**, 287–298 (2010).
- Mezgec, K. et al. Holocene sea ice variability driven by wind and polynya efficiency in the Ross Sea. *Nat. Commun.* **8**, 1334 (2017).
- Weber, M. E. et al. Interhemispheric ice-sheet synchronicity during the last glacial maximum. *Science* **334**, 1265–1269 (2011).
- Bauch, H. A. et al. A multiproxy reconstruction of the evolution of deep and surface waters in the subarctic Nordic seas over the last 30,000 yr. *Quat. Sci. Rev.* **20**, 659–678 (2001).
- Kremer, A. et al. Changes in sea ice cover and ice sheet extent at the Yermak Plateau during the last 160 ka - Reconstructions from biomarker records. *Quat. Sci. Rev.* **182**, 93–108 (2018).
- Xiao, X. T., Stein, R. & Fahl, K. MIS 3 to MIS 1 temporal and LGM spatial variability in Arctic Ocean sea ice cover: Reconstruction from biomarkers. *Paleoceanography* **30**, 969–983 (2015).
- Thatje, S., Hillenbrand, C. D., Mackensen, A. & Larter, R. Life hung by a thread: Endurance of antarctic fauna in glacial periods. *Ecology* **89**, 682–692 (2008).
- Svendsen, J. I. et al. Late quaternary ice sheet history of northern Eurasia. *Quat. Sci. Rev.* **23**, 1229–1271 (2004).
- Clark, P. U. et al. The last glacial maximum. *Science* **325**, 710–714 (2009).
- Patton, H., Hubbard, A., Andreassen, K., Winsborrow, M. & Stroeven, A. P. The build-up, configuration, and dynamical sensitivity of the Eurasian ice-sheet complex to Late Weichselian climatic and oceanic forcing. *Quat. Sci. Rev.* **153**, 97–121 (2016).
- Hebbeln, D., Dokken, T., Andersen, E. S., Hald, M. & Elverhoi, A. Moisture Supply for northern ice-sheet growth during the Last Glacial Maximum. *Nature* **370**, 357–360 (1994).
- Norgaard-Pedersen, N. et al. Arctic ocean during the last glacial maximum: Atlantic and polar domains of surface water mass distribution and ice cover. *Paleoceanography* **18**, 1063 (2003).
- Bøe, R. et al. Sandwaves and sand transport on the Barents Sea continental slope offshore northern Norway. *Mar. Pet. Geol.* **60**, 34–53 (2015).
- Vorren, T. O. et al. The Norwegian Greenland Sea continental margins: Morphology and late Quaternary sedimentary processes and environment. *Quat. Sci. Rev.* **17**, 273–302 (1998).
- Knies, J. et al. The Plio-Pleistocene glaciation of the Barents Sea-Svalbard region: a new model based on revised chronostratigraphy. *Quat. Sci. Rev.* **28**, 812–829 (2009).
- Winsborrow, M. C. M., Andreassen, K., Corner, G. D. & Laberg, J. S. Deglaciation of a marine-based ice sheet: Late Weichselian palaeo-ice dynamics and retreat in the southern Barents Sea reconstructed from onshore and offshore glacial geomorphology. *Quat. Sci. Rev.* **29**, 424–442 (2010).
- Ottesen, D., Dowdeswell, J. A. & Rise, L. Submarine landforms and the reconstruction of fast-flowing ice streams within a large Quaternary ice sheet: The 2500-km-long Norwegian-Svalbard margin (57 degrees-80 degrees N). *Geol. Soc. Am. Bull.* **117**, 1033–1050 (2005).
- Rüther, D. C., Mattingdal, R., Andreassen, K., Forwick, M. & Husum, K. Seismic architecture and sedimentology of a major grounding zone system deposited by the Bjornoyrenna Ice Stream during Late Weichselian deglaciation. *Quat. Sci. Rev.* **30**, 2776–2792 (2011).
- Hopkins, T. S. The GIN Sea - A synthesis of its physical oceanography and literature review 1972-1985. *Earth-Sci. Rev.* **30**, 175–318 (1991).
- Hansen, B. & Østerhus, S. North Atlantic-Nordic Seas exchanges. *Progress. Oceanogr.* **45**, 109–208 (2000).
- Stuiver, M., Reimer, P. J. & Reimer, R. W. CALIB 7.1 [WWW program] <http://calib.org> (2018).
- Ezat, M. M. et al. Ventilation history of Nordic Seas overflows during the last (de)glacial period revealed by species-specific benthic foraminiferal C-14 dates. *Paleoceanography* **32**, 172–181 (2017).
- Pailard, D., Labeyrie, L. & Yiou, P. Macintosh program performs time-series analysis. *EOS Trans. AGU* **77**, 379 (1996).
- Blaauw, M. & Christen, J. A. Flexible paleoclimate age-depth models using an autoregressive gamma process. *Bayesian Anal.* **6**, 457–474 (2011).
- Brown, T. A., Belt, S. T., Tatarek, A. & Mundy, C. J. Source identification of the Arctic sea ice proxy IP₂₅. *Nat. Commun.* **5**, 4197 (2014).
- Berben, S. M. P., Husum, K., Navarro-Rodriguez, A., Belt, S. T. & Aagaard-Sørensen, S. Semi-quantitative reconstruction of early to late Holocene spring and summer sea ice conditions in the northern Barents Sea. *J. Quat. Sci.* **32**, 587–603 (2017).
- Jennings, A. E. et al. Ocean forcing of Ice Sheet retreat in central west Greenland from LGM to the early Holocene. *Earth. Planet. Sci. Lett.* **472**, 1–13 (2017).
- Köseoglu, D. et al. Complementary biomarker-based methods for characterising Arctic sea ice conditions: A case study comparison between multivariate analysis and the PIP₂₅ index. *Geochim. Cosmochim. Acta* **222**, 406–420 (2018).
- Rørvik, K. L., Rasmussen, T. L., Hald, M. & Husum, K. Intermediate water ventilation in the Nordic seas during MIS 2. *Geophys. Res. Lett.* **40**, 1805–1810 (2013).
- Dokken, T. M. & Hald, M. Rapid climatic shifts during isotope stages 2–4 in the Polar North. *Atl. Geol.* **24**, 599–602 (1996).

41. Zamelczyk, K., Rasmussen, T. L., Husum, K., Godtliessen, F. & Hald, M. Surface water conditions and calcium carbonate preservation in the Fram Strait during marine isotope stage 2, 28.8–15.4 kyr. *Paleoceanography* **29**, 1–12 (2014).
42. Laberg, J. S. & Vorren, T. O. Late Weichselian submarine debris flow deposits on the Bear Island trough mouth fan. *Mar. Geol.* **127**, 45–72 (1995).
43. Rasmussen, T. L. & Thomsen, E. The role of the North Atlantic Drift in the millennial timescale glacial climate fluctuations. *Palaeogeogr. Palaeoclimatol. Palaeoecol.* **210**, 101–116 (2004).
44. Müller, J. & Stein, R. High-resolution record of late glacial and deglacial sea ice changes in Fram Strait corroborates ice-ocean interactions during abrupt climate shifts. *Earth. Planet. Sci. Lett.* **403**, 446–455 (2014).
45. Patton, H. et al. Deglaciation of the Eurasian ice sheet complex. *Quat. Sci. Rev.* **169**, 148–172 (2017).
46. Hormes, A., Gjermundsen, E. F. & Rasmussen, T. L. From mountain top to the deep sea - Deglaciation in 4D of the northwestern Barents Sea ice sheet. *Quat. Sci. Rev.* **75**, 78–99 (2013).
47. Jessen, S. P., Rasmussen, T. L., Nielsen, T. & Solheim, A. A new Late Weichselian and Holocene marine chronology for the western Svalbard slope 30,000–0 cal years BP. *Quat. Sci. Rev.* **29**, 1301–1312 (2010).
48. Rasmussen, T. L. et al. Paleocceanographic evolution of the SW Svalbard margin (76 degrees N) since 20,000 C-14 yr BP. *Quat. Res.* **67**, 100–114 (2007).
49. Junttila, J., Aagaard-Sorensen, S., Husum, K. & Hald, M. Late Glacial-Holocene clay minerals elucidating glacial history in the SW Barents Sea. *Mar. Geol.* **276**, 71–85 (2010).
50. Weber, M. E. et al. Millennial-scale variability in Antarctic ice-sheet discharge during the last deglaciation. *Nature* **510**, 134–138 (2014).
51. Telesinski, M. M., Bauch, H. A., Spielhagen, R. F. & Kandiano, E. S. Evolution of the central Nordic Seas over the last 20 thousand years. *Quat. Sci. Rev.* **121**, 98–109 (2015).
52. Knies, J., Kleiber, H. P., Matthiessen, J., Muller, C. & Nowaczyk, N. Marine ice-rafted debris records constrain maximum extent of Saalian and Weichselian ice-sheets along the northern Eurasian margin. *Glob. Planet. Change* **31**, 45–64 (2001).
53. Wiersma, A. P. & Jongma, J. I. A role for icebergs in the 8.2 ka climate event. *Clim. Dyn.* **35**, 535–549 (2010).
54. Müller, J., Masse, G., Stein, R. & Belt, S. T. Variability of sea-ice conditions in the Fram Strait over the past 30,000 years. *Nat. Geosci.* **2**, 772–776 (2009).
55. Stanford, J. D. et al. A new concept for the paleocceanographic evolution of Heinrich event 1 in the North Atlantic. *Quat. Sci. Rev.* **30**, 1047–1066 (2011).
56. Grousset, F. E. et al. Patterns of ice-rafted detritus in the glacial North Atlantic (40-degrees-55 degrees N). *Paleoceanography* **8**, 175–192 (1993).
57. Bischof, J. F. The decay of the Barents Sea ice sheet as documented in Nordic Seas ice-rafted debris. *Mar. Geol.* **117**, 35–55 (1994).
58. Sarnthein, M. et al. Variations in Atlantic surface ocean paleocceanography, 50-degrees - 80 degrees N - A time slice record of the last 30,000 years. *Paleoceanography* **10**, 1063–1094 (1995).
59. McManus, J. F., Francois, R., Gherardi, J. M., Keigwin, L. D. & Brown-Leger, S. Collapse and rapid resumption of Atlantic meridional circulation linked to deglacial climate changes. *Nature* **428**, 834–837 (2004).
60. Hoff, U., Rasmussen, T. L., Stein, R., Ezat, M. M. & Fahl, K. Sea ice and millennial-scale climate variability in the Nordic seas 90 kyr ago to present. *Nat. Commun.* **7**, 12247 (2016).
61. Ritz, S. P., Stocker, T. F., Grimalt, J. O., Menviel, L. & Timmermann, A. Estimated strength of the Atlantic overturning circulation during the last deglaciation. *Nat. Geosci.* **6**, 208–212 (2013).
62. Marcott, S. A. et al. Ice-shelf collapse from subsurface warming as a trigger for Heinrich events. *Proc. Natl Acad. Sci. USA* **108**, 13415–13419 (2011).
63. Rohling, E. J. et al. Differences between the last two glacial maxima and implications for ice-sheet, delta O-18, and sea-level reconstructions. *Quat. Sci. Rev.* **176**, 1–28 (2017).
64. Rise, L. & Brendryen, J. *Leirinnhold i jordarter – en sammenlignende studie med vekt på metodene Coulter Laser 200 og Sedigraph, og forslag til beregning av ekvivalent leirinnhold i prosent*. Report No. 2013.012, 35 (NGU (Geological Survey of Norway), Trondheim, 2013).
65. Mackey, E. A. et al. Certification of three NIST renewal soil standard reference materials for element content: SRM 2709a San Joaquin Soil, SRM 2710a Montana soil I, and SRM 2711a Montana soil II. *Natl Inst. Stand. Technol. Spec. Publ.* **260-172**, 39 (2010).
66. Belt, S. T. et al. A novel chemical fossil of palaeo sea ice: IP₂₅. *Org. Geochem.* **38**, 16–27 (2007).
67. Belt, S. T. et al. A reproducible method for the extraction, identification and quantification of the Arctic sea ice proxy IP₂₅ from marine sediments. *Anal. Methods* **4**, 705–713 (2012).
68. Boon, J. J. et al. Black Sea sterol – a molecular fossil for dinoflagellate blooms. *Nature* **277**, 125–127 (1979).
69. Knies, J. & Stein, R. New aspects of organic carbon deposition and its paleocceanographic implications along the northern Barents Sea margin during the last 30,000 years. *Paleoceanography* **13**, 384–394 (1998).
70. Stein, R., Fahl, K. & Müller, J. Proxy reconstruction of Cenozoic Arctic Ocean sea-ice history - from IRD to IP₂₅. *Polarforschung* **82**, 37–71 (2012).

Acknowledgements

This research was supported by MAREANO (www.mareano.no), the Norwegian Deep-water Program (NDP) and the Norwegian Research Council (RCN grants 223259, 255150). We thank the captain and crew on RV *G.O. Sars* for cooperation during data acquisition and Irene Lundquist for the artwork.

Author contributions

The main idea was developed by J.K., and J.K., S.T.B. wrote most of the text. The IP₂₅ and dinosterol analyses were made by D.K., while stable isotope work and faunal counts were performed by G.P. and P.J. Lithological description and non-destructive XRF analyses were provided by N.B. and M.K. Geological and geophysical data acquisition was coordinated by R.B., L.R. and V.B. All authors discussed the results and commented on the manuscript.

Additional information

Supplementary Information accompanies this paper at <https://doi.org/10.1038/s41467-018-06252-8>.

Competing interests: The authors declare no competing interests.

Reprints and permission information is available online at <http://npg.nature.com/reprintsandpermissions/>

Publisher's note: Springer Nature remains neutral with regard to jurisdictional claims in published maps and institutional affiliations.



Open Access This article is licensed under a Creative Commons Attribution 4.0 International License, which permits use, sharing, adaptation, distribution and reproduction in any medium or format, as long as you give appropriate credit to the original author(s) and the source, provide a link to the Creative Commons license, and indicate if changes were made. The images or other third party material in this article are included in the article's Creative Commons license, unless indicated otherwise in a credit line to the material. If material is not included in the article's Creative Commons license and your intended use is not permitted by statutory regulation or exceeds the permitted use, you will need to obtain permission directly from the copyright holder. To view a copy of this license, visit <http://creativecommons.org/licenses/by/4.0/>.

© The Author(s) 2018