

1 **Effects of acute exposure to dispersed oil and burned oil residue on long-term**  
2 **survival, growth and reproductive development in polar cod (*Boreogadus saida*)**

3 ML Bender<sup>a,b</sup>, M Frantzen<sup>a</sup>, L Camus<sup>a</sup>, S LeFloch<sup>c</sup>, J Palerud<sup>a</sup>, J Nahrgang<sup>b</sup>

4 <sup>a</sup>Akvaplan-niva, Fram Centre, 9296 Tromsø, Norway

5 <sup>b</sup>Department of Arctic and Marine Biology, UiT-The Arctic University of Norway, 9037 Tromsø,  
6 Norway

7 <sup>c</sup> Centre de Documentation de Recherche et d'Expérimentations sur les Pollutions Accidentelles  
8 des Eaux (CEDRE), 715 rue Alain Colas, CS41836-F- 29218 Brest Cedex 2, France

9 **Abstract**

10 The present study investigates the potential long-term physiological effects on maturing  
11 polar cod (*Boreogadus saida*), an Arctic key species, after an acute exposure (48 h) to  
12 environmentally realistic concentrations of either mechanically dispersed oil (MDO),  
13 chemically dispersed oil (CDO) or burned oil residues (BO) (N=58-60 per treatment).  
14 Following exposure, fish were monitored in a common tank supplied with clean water for  
15 a seven-month period coinciding with the period of reproductive development. Females  
16 exposed to BO residues were more frequently found in an earlier phase of gonadal  
17 maturation compared to unexposed females while no effects of different oil spill response  
18 (OSR) actions were seen in the reproductive development of males. Mechanically and  
19 chemically dispersed oil induced a transient short-term reduction in growth in the first week  
20 post-exposure. Overall, no significant long-term effects of exposure were seen in growth  
21 or mortality. Ultimately, this study provides information for the assessment of population  
22 consequences of different OSR actions as part of a net environmental benefit analysis.

23 **Keywords:** Arctic, petroleum hydrocarbons, growth, reproductive cycle, sublethal effects,  
24 oil spill response

25 **1. Introduction**

26 Increasing anthropogenic activities related to petroleum in the Arctic elevates the risk of  
27 acute and chronic oil spills. Conditions inherent in the Arctic, e.g. weather, sea ice, limited  
28 infrastructure, remoteness, and lack of precedent for responses in areas under multinational  
29 governance, place specific requirements on operations including eventual oil spill response  
30 (OSR) (Harsem et al. 2011). Recent OSR actions have stressed the need for OSR decision  
31 making that is site- and situation-specific to adequately consider physical factors and  
32 environmental and societal resources at risk (Beyer et al. 2016; Fingas, 2016).

33

34 Polycyclic aromatic hydrocarbons (PAHs) are one group of toxic compounds in petroleum,

35 some of which are known to exhibit carcinogenic, genotoxic, and endocrine disrupting  
36 properties, even at low concentrations (Kime, 1995; Horng et al. 2014; Vignet et al. 2014).  
37 However, a large portion of the water-soluble fraction of crude oil is made up of poorly  
38 characterized mixtures of organic compounds, also classified as unresolved complex  
39 mixtures (UCM) (Melbye, 2009), with toxicological effects difficult to discern (Booth et  
40 al. 2007, 2008).

41 Mechanical recovery of spilled oil is often the first choice in an OSR and risk mitigation,  
42 however, chemical dispersants and *in situ* burning may be better suited in ice infested  
43 waters of the Arctic (Fritt-Rasmussen et al. 2015). Use of chemical dispersants as an OSR  
44 action is intended to increase the biodegradation potential of petroleum by forming oil-  
45 surfactant micelles (Lessard and DeMarco, 2000). The use of chemical dispersants thereby  
46 enhances the oil concentration in the water column for a time whilst reducing the surface  
47 slick, the risk for encapsulating the oil slick into the sea ice (Brandvik et al. 2006), and the  
48 exposure potential for birds and marine mammals (Fingas, 2011). Increased concentrations  
49 of small oil droplets in the water column may lead to increased bioavailability of PAHs  
50 (Ramachandran et al. 2004; Milinkovitch et al. 2012), which has been linked to adverse  
51 effects on behavior, growth, reproduction, and survival in several fish species (Gulec et al.  
52 1997; Yamada et al. 2003; Milikinovitch et al. 2011; Wu et al. 2012; Yu et al. 2015;  
53 Nwaizuzu et al. 2016).

54

55 *In situ* burning is a countermeasure technology that was first implemented in 1958 along  
56 the ice-covered Mackenzie River in Northwest Canada and since then has been used  
57 operationally in ice free areas during the 1989 Exxon Valdez oil spill in Alaska and  
58 extensively in the 2010 Deepwater Horizon oil spill in the Gulf of Mexico (Beyer et al.  
59 2016; Buist, 2004; Hunt, 2009). Burning is a quickly implemented OSR action that requires  
60 little infrastructure and, most significantly, is effective, leaving approximately 10% of the  
61 original hydrocarbon load (Guenette and Sveum, 1995; Buist, 2004; Buist et al. 2013;  
62 Fingas, 2016). Burning creates a burned oil residue (BO) that may sink depending on oil  
63 characteristics (Fritt-Rasmussen et al. 2015). A limited number of studies have investigated  
64 the potential effects of BO on biota and agreement on the low acute toxicity of BO  
65 applications has been reached (for reviews see Buist 2004; Buist et al. 2013; Fingas 2016).

66 Compared to untreated and chemically dispersed oil, burned oil was found to be less  
67 acutely toxic in rainbow trout (*Onchoryncus mykiss*), three-spined stickleback  
68 (*Gasterosteus aculeatus*) (Blenkinsopp et al. 1996), Australian bass (*Macquaria*  
69 *novemaculeata*) (Cohen and Nugegoda, 2000; 2006), amphipods and snails (Gulec and  
70 Holdway, 1999), and in copepods (Faksness et al. 2012). However, the long-term effects  
71 of acute exposure to burned oil residues has yet to be examined.

72

73 Polar cod (*Boreogadus saida*) is an endemic key species with a pan Arctic distribution  
74 (Bradstreet and Cross, 1982) that has been used as a sentinel species in Arctic environments  
75 to understand the effects and mechanisms of petroleum exposure (Christiansen and George,  
76 1995; Jonsson et al. 2010; Andersen et al. 2015; Nahrgang et al. 2010; 2016; Bender et al.  
77 2016). The geographical distribution of polar cod overlaps with oil and gas fields and  
78 transport areas in all Arctic seas and fish can therefore encounter petroleum products  
79 (Bailly, 2008; Bird et al. 2008; David et al. 2016). Gonadal development in polar cod  
80 begins in early autumn and final maturation and spawning takes place from January to  
81 March (Nahrgang et al. 2014; Mueter et al. 2016). Gonadal investment in polar cod is high  
82 with up to 87% of liver reserves metabolized during reproductive development (Hop et al.  
83 1995). Throughout the active gametogenesis period, male fish undergo more rapid  
84 development of gonadal tissue and an earlier increase in plasma sex steroid concentrations  
85 than female fish (Bender et al. 2016).

86

87 Acute toxicity data (e.g. LC<sub>50</sub>) using model organisms represents the majority of existing  
88 data on the effects of OSR actions while actual oil spills present the challenge of  
89 confounding factors (e.g. other sources of pollution or climate and fishing driven pressure),  
90 indirect effects, and missing background data when interpreting effects on biota (Beyer et  
91 al. 2016; Peterson et al. 2003). Expanding potential effects from short-term responses of  
92 biomarkers after acute exposure to a predictive indicator of long-term effects is challenging  
93 (Forbes et al. 2006; Claireaux et al. 2013). The objective of this study was to investigate  
94 long-term resilience of adult polar cod exposed to mechanically dispersed oil (MDO),  
95 chemically dispersed oil (CDO) or BO. To link acute exposure to long-term effects,  
96 survival, growth, and reproductive investment in polar cod were monitored for seven

97 months after an acute (48 h) exposure. Simulated wave and current energy in open exposure  
98 tanks ensured that acute exposures set up was dynamic whereby organisms were exposed  
99 to the whole dispersed oil solution (dissolved fractions and oil droplets) (Milinkovitch et  
100 al. 2011; Frantzen et al. 2015, 2016). We hypothesized that addition of chemical  
101 dispersants would increase the exposure of polar cod to crude oil resulting in reductions in  
102 growth and reduced investment in reproductive development compared to exposure to  
103 MDO and BO treatments. Growth and reproductive development are physiological  
104 endpoints that can provide an integrative measure of the effects of pollutants on whole  
105 organisms and are important to consider when evaluating the potential risks to populations.  
106 The aim of this study is to generate sound information on the sensitivity of adult polar cod  
107 to support the net environmental benefit analysis (NEBA) of OSR actions in the Arctic  
108 marine system.

## 109 *2. Material and Methods*

### 110 *2.1 Fish collection and husbandry*

111 Wild polar cod were collected in Svalbard fjords in September 2014 by bottom trawl during  
112 a cruise aboard the RV Helmer Hanssen and thereafter transported to the Akvaplan-niva  
113 marine laboratory in Tromsø, Norway. The fish were reared in a single common 5000 L  
114 tank for an eight-month acclimation and maintenance period and hand fed twice a week on  
115 a commercial marine fish feed (ration equal to 4% body weight per feeding; Skretting, 3-4  
116 mm dry pellets). The light regime was maintained on a simulated Svalbard light throughout  
117 acclimation, exposure and post-exposure periods. The seawater temperature in the tank  
118 followed the annual variation of Grøtsundet, the fjord outside the marine laboratory where  
119 seawater was collected from 50 m depth, with a high of  $8.6 \pm 0.1^\circ\text{C}$  in September and low  
120 of  $3.74 \pm 0.02^\circ\text{C}$  in February and yearly average of  $6.2 \pm 0.1^\circ\text{C}$ . Oxygen saturation was  
121 keep above 90% for acclimation and post-exposure period. On the 19<sup>th</sup> of May 2015, all  
122 fish (n=310) were anesthetized (Metacaine at 0.08 g/L seawater) and received a passive  
123 integrated transponder tag (Trovan®) inserted intraperitoneally with no mortality or  
124 negative effects observed in the first weeks post tagging.

## 125 *2.2 Exposure design*

126 Exposure to MDO, CDO or BO commenced in late June 2015, and growth was followed  
127 over a seven-month period (i.e. until January 2016) coincident with the active  
128 vitellogenesis/spermatogenesis period of polar cod (Bender et al. 2016). Goliat (Kobbe)  
129 crude oil, a sweet light crude oil with a density of 0.83 kg /L, an °API gravity of 40.3 and  
130 a sulphur content of 0.14% wet weight (Eni Norge, 2015) was used for the MDO and CDO  
131 treatments. For preparing BO, 40 L of Goliat (Kobbe) crude oil was added at the surface  
132 of a tank containing approximately 200 L sea water. The oil was set on fire and burned for  
133 3 minutes until the fire died out, leaving approximately 4 L burned residue in the tank (i.e.  
134 ~90 % of the fresh oil volume was burned off). The set-up consisted of four treatments and  
135 three replicates per treatment; control (no oil, Ctrl), MDO or CDO (premixed with  
136 dispersant FINASOL®; 5% w/w) and BO residue. The BO concentration equaled 10% of  
137 the nominal oil concentration used in the mechanically and chemically dispersed oil  
138 treatments (i.e. 90% burned off in BO compares to MDO and CDO). To be able to directly  
139 compare between dispersed oil toxicity (MDO, CDO) and BO toxicity, the same exposure  
140 protocol was used for all treatments.

141

142 The dispersant mixtures were generated according to Frantzen et al. (2015, 2016) following  
143 the protocol developed by Cedre, France for the DISCOBIOL project (e.g. Milinkovitch et  
144 al. 2011). Briefly, the oil treatments (MDO and CDO; nominal concentration of 67 mg/L)  
145 or BO (nominal concentration of 6.7 mg/L) were introduced to individual 120 L exposure  
146 tanks through a funnel fixed at the surface. A pump in the bottom of each tank provided  
147 continuous mixing energy in all tanks. In order to ensure a homogeneous exposure mixture  
148 in the tanks and to allow some weathering of the oil to take place prior to exposure start,  
149 water and oil/oil premixed with dispersant/BO were mixed for 24 hours before the  
150 introduction of fish to the system. The water system was static and oil exposures were  
151 conducted for 48 hours after the introduction of the animals (water temperature  $6.4 \pm 0.3$   
152 °C; O<sub>2</sub> saturation was held >80% with aide of aerators). In total, 236 specimens were  
153 exposed from the 26<sup>th</sup> to the 28<sup>th</sup> of June, 2015 with each replicate exposure tank (n=3 per  
154 treatment) containing 18-20 fish.

### 155 *2.2.1 THC and PAHs in seawater*

156 In order to monitor exposure concentrations, water samples (approximately 1L) were taken  
157 from all exposure tanks (n=3 per treatment) at the beginning of the experiment (t 0h), after  
158 24 hours (t 24h), and at the end of the 48h exposure (t 48h). Determination of total  
159 hydrocarbon content (THC; n-C10 – n-C35) was performed on isooctane extracts by Gas  
160 Chromatography-Flame Ionization Detector (GC-FID). Each sample extract was analyzed  
161 on the GC simultaneously with control solutions (reference oil EDC95/11; Norwegian  
162 Environment Agency M-408/2015) of three known concentrations of THC, covering the  
163 concentration range of the sample extracts (Frantzen et al. 2016). Analysis of 26 PAHs (16  
164 Environmental Protection Agency [EPA] priority parent PAHs and C1–C3-alkylated  
165 naphthalenes, phenanthrenes and dibenzothiophenes) concentrations was performed by  
166 GC–Mass Spectrometry (GC–MS) operated in selected ion monitoring mode. Single PAH  
167 concentrations were calculated by quantification of altered deuterated standards added  
168 prior to extraction, and development of a pre-determined calibration curve of five PAH-  
169 standards at different concentrations (Frantzen et al. 2016). The measured THC and PAH  
170 concentrations represent dissolved components as well as oil droplets. In the determination  
171 of  $\sum 26$  PAH concentrations, single components with values below the limit of detection  
172 (LOD) were assigned a value of zero. Due to a technical instrument failure, water samples  
173 from t0h at the start of the exposure gave unreliable results and were excluded from further  
174 analysis.

175

### 176 *2.3. Post-exposure monitoring and final sampling*

177 The 48h exposure period was followed by a 48h recovery period in 500 L flow-through  
178 tanks and subsequent growth registration (T1; see paragraph below) before the fish were  
179 transferred back to the common 5000 L rearing flow-through tank. The common tank  
180 ensured identical post-exposure rearing conditions for all treatment and replicate groups.  
181 The fish were fasted two days prior to exposure start, during the 48h exposure period, and  
182 two days prior to every growth measurement. Fish were, however, offered food  
183 immediately following exposure in clean water tanks even though it was less than 48 hours  
184 before the growth checkpoint.

185

186 Mortality was recorded daily over the entire experiment. Growth was recorded at monthly  
187 intervals by first anesthetizing, then measuring the total weight ( $\pm 0.01$  g) and total length  
188 ( $\pm 0.1$  cm) at the following time points: T0 (May 19<sup>th</sup>, pit tagging), T1 (June 30<sup>th</sup>, 2 days  
189 post-exposure), T2 (July 30<sup>th</sup>), T3 (September 3<sup>rd</sup>), T4 (October 5<sup>th</sup>), T5 (November 3<sup>rd</sup>),  
190 T6 (December 9<sup>th</sup>), and T7 (January 5<sup>th</sup>). An additional group of “unexposed” polar cod  
191 was included in the common rearing tank which consisted of the remaining acclimation  
192 fish that fell below (Unexp. 1) and above (Unexp. 2) the desired intermediate size range  
193 and were therefore not included the exposure experiment (n=74). These additional  
194 unexposed fish provided a control for experimental handling stress related to the exposure  
195 with growth measurements undertaken at T0, T2-T7 (excluded from T1 due to logistical  
196 limitations).

197

198 On the 5<sup>th</sup> of January, all remaining experimental fish and the unexposed fish were  
199 sacrificed by a sharp blow to the head and the following measurements were collected:  
200 total length ( $\pm 0.1$  cm), total weight ( $\pm 0.01$  g wet weight [wwt]), sex, gonad weight ( $\pm 0.01$   
201 g wwt), liver weight ( $\pm 0.01$  g wwt) and somatic weight (empty carcass weight,  $\pm 0.01$  g  
202 wwt). The middle section of the testis and ovaries were fixed in a buffered formaldehyde  
203 solution (4%) for later histological analysis. Otoliths were collected for age determination  
204 and read under a dissection microscope (Leica M205C).

205 Specific growth rate (SGR) for individual fish for the entire experimental period was  
206 determined according to the equation:

$$207 \text{ SGR} = [(\ln_t W_2 - \ln_t W_1) t^{-1}] 100$$

208 where SRG is % increase in body weight per day.  ${}_t W_1$  and  ${}_t W_2$  are the total weights of the  
209 fish recorded at times 1 and 2 respectively, and t is the number of days between weighting  
210 events.

211

212 Gonadosomatic index (GSI) and hepatosomatic index (HSI) were calculated according to  
213 the following equations:

$$214 \text{ GSI} = (\text{gonad weight} / \text{somatic weight}) * 100$$

$$215 \text{ HSI} = (\text{liver weight} / \text{somatic weight}) * 100$$

216

217 Condition factor for the different time points (T0-T7) was calculated:

$$218 \quad CF=(W/L^3)*100$$

219 where W is total weight in g and L is the total length in cm.

220

### 221 *2.5. Histological analysis*

222 Briefly, gonad tissues were rinsed of buffered formalin, dehydrated in a series of 70%  
223 ethanol baths and embedded in paraffin wax (Aldrich, USA) overnight using Histo-clear®  
224 as a clearing agent in a Shandon Citadel 1000 (Micron AS, Moss, Norway). Tissues were  
225 then embedded into paraffin and sliced at 5 µm (females) and 3 µm (males) thickness,  
226 using a Leica RM 2255 microtome before being stained with haematoxylin and eosin. Two  
227 slides were prepared for each fish. Gonad maturity stages in females were classified using  
228 the development stage of oocytes within the respective categories of immature, resting, and  
229 early and advanced stages of maturation. Immature and resting females had only primary  
230 growth (PG) oocytes while maturing females had vitellogenic oocytes present. Resting  
231 females were identified by the presence of residual oocytes from previous spawning events  
232 with otherwise only PG oocytes. Maturing females exhibited different phases of oocyte  
233 development with varying extents of vitellogenin derived oil droplets in the oocyte  
234 cytoplasm (Figure 4ab). Oil droplets were present but filling less than ½ of the cytoplasm  
235 in early maturing females while advanced maturing females had oocytes completely filled  
236 or nearly filled with oil droplets. Abnormal oocyte development was noted with regard to  
237 the location of cortical alveolar vesicles and oil droplet within the oocyte. Oocyte diameter  
238 ( $n \geq 6$  oocytes per female) was counted for oocytes in the most advanced cohort using the  
239 image processing software (Leica DFC 295 camera attached to a Leica DM 2000 LED  
240 microscope and Leica analysis software) and then averaged for each female. Oocyte stage  
241 frequency disruption was determined by classifying all oocytes with a nucleus in an area  
242 of 20 mm<sup>2</sup> placed randomly on the tissue slice. Frequency counts were averaged over both  
243 replicate slides. Presence of residue oocytes was noted and relative frequencies of atretic  
244 oocytes were semi-quantified using a 0-3 scale ranging from 0 (0% of oocytes were atretic);  
245 1 (1-2%); 2 (3-20%); and 3 (20-30% of oocytes were atretic) for each female. Male testes  
246 were classified into the four different maturity stages of immature, resting, and maturing  
247 with either late spermatocytes stage I (Figure S1a) or with late spermatocytes stage II



248 dominating (Figure S1b). Immature males were identified as those with testis containing  
249 only early stage spermatocytes (Figure S1c) and a low GSI while resting males had spent  
250 testis containing portions of early stage spermatocytes with otherwise empty lumen space  
251 (Figure S1d).

## 252 2.6 Statistical Analysis

253 All statistical analyses were performed with R 3.1.1 (R Core Team, 2014). A Levene's test  
254 was used to test for normality and homogeneity of variance. When homogeneity criteria  
255 were met, a one-way analysis of variance (ANOVA) was run, and when a significant  
256 treatment effect was found, the Tukey's HSD post hoc for unequal sample sizes was used  
257 to distinguish differences between treatment groups. In cases where homogeneity criteria  
258 were not met, a nonparametric Kruskal Wallis ANOVA was used, followed by a multiple  
259 comparison of mean rank of all group tests. Difference in SGR variance was tested using  
260 an F-test. Maturity stage frequency distributions were tested using a Fishers exact test with  
261 the null hypothesis that all treatments have similar maturity stage distributions. With a  
262 significant Fishers exact test result, a *chi* squared test was run comparing all treatment  
263 groups and control against one another. A probability level of  $p \leq 0.05$  was considered  
264 significant for all tests. All values are presented as mean  $\pm$  standard error of the mean (SE).

## 265 3. Results

### 266 3.1. Water chemistry

267 The total hydrocarbon content (THC) in water samples from the control treatment was not  
268 detectable throughout the exposure period, and remained relative stable throughout the  
269 last 24 h of exposure with values of  $0.9 \pm 0.5$ ,  $9.2 \pm 3.7$ ,  $22.5 \pm 3.7$  mg/L in BO, MDO and  
270 CDO, respectively (Fig. 1a). Average  $\sum 26$  PAH concentrations were highest after 24 h in  
271 all treatments and thereafter decreased by ca. 20 % at 48 h (Fig. 1b, Table S1). Highest  
272  $\sum 26$  PAH concentrations were found the CDO treatment ( $101.5 \pm 14.3$   $\mu\text{g/L}$ ) at 24 h  
273 followed by the MDO ( $62.4 \pm 20.7$   $\mu\text{g/L}$ ), BO ( $3.5 \pm 1.2$   $\mu\text{g/L}$ ) and Ctrl ( $1.05 \pm 0.0$   $\mu\text{g/L}$ )  
274 treatments. Dominating PAHs (>98 % of  $\sum 26$  PAH) in all treatments (BO, MDO and CDO)  
275 were parent and alkylated naphthalenes, phenanthrene/anthracenes and dibenzothiophenes,  
276 whereas only parent and C1, C2-naphthalenes were detected in the Control. In BO

277 treatment, the only high molecular weight PAHs measured above detection limits were  
278 benzo(b)fluoranthene (0.03 µg/L) and benzo(k)fluoranthene (0.01 µg/L), and these  
279 concentrations were comparable to measured concentrations in MDO and CDO (0.01 –  
280 0.10 µg/L and 0.01 - 0.013 µg/L, respectively; Table S1). Acenaphthylene was the only  
281 PAH with a higher concentration in BO (0.01 µg/L) compared to MDO and CDO (<0.004  
282 – 0.005 µg/L) (Table S1).

283

### 284 *3.2. The initial fish population*

285 Fish initially part of the exposure experiment ranged in size from 12.0 – 59.0 g total weight  
286 (mean  $34.7 \pm 0.6$  SE), 12.0 – 22.0 cm length (mean  $17.3 \pm 0.1$  SE) and age ranged between  
287 2 and 6 years (mean  $4.5 \pm 0.1$  SE) at T0 (Table 1). Fish used for the exposure experiment  
288 were all selected from the intermediate size group of the collected fish (size range 24.0 –  
289 47.5 g) with no significant difference in size between any of the groups (Ctrl, BO, MDO,  
290 CDO). The remaining unexposed polar cod were not included in any of the treatment  
291 groups and were classified by size as they exhibited a bimodal size range that was  
292 significantly smaller (Unexp1; size range 12-32 g) and bigger (Unexp2; size range 38-59  
293 g) than the exposed fish.

### 294 *3.3. Mortality*

295 Mortality was observed after the first month post collection, and in the period  
296 February/March 2015 following the natural spawning period before exposure took place  
297 (data not shown), after which mortality subsided. Fish were otherwise in good condition  
298 throughout the acclimation, exposure and post-exposure monitoring period. No mortality  
299 was registered in any treatments tanks during the 48h exposure period. Mortality was,  
300 however, observed during the post exposure period for all treatments independent of  
301 exposure. Mortality was most prevalent in the first month post-exposure (T1-T2 [June 30<sup>th</sup>  
302 – July 30<sup>th</sup>]) with 8-12% mortality occurring in all oil treatments and control. The mortality  
303 rate steadied to between 2 and 5 % per month until the final sampling in January for all  
304 treatments and control with no statistical difference in cumulative mortality (Fig. 2). The  
305 group of larger unexposed fish (Unexp 2.) exhibited the highest cumulative mortality  
306 (32%).

307

308 *3.4. Specific growth rate*

309 In general, there was a great variation in SGR within all treatment groups throughout the  
310 experiment ranging from -2.5 to 3.5 % change in body weight per day. Overall, growth  
311 rates (mean  $\pm$  SE) were lowest after tagging and during exposure (T0-T1 [May 19<sup>th</sup> - June  
312 30<sup>th</sup>], (-0.01 – 0.15 % increase in body weight per day) and highest in the consecutive time  
313 period (T1-T2 [June 30<sup>th</sup> – July 30<sup>th</sup>], 0.47 - 0.73 % increase in body weight per day). In the  
314 period from tagging to immediately after exposure (T0-T1), significant treatment effects  
315 on growth rates were observed with high rates in the BO compared to lower growth rates  
316 in the MDO ( $p < 0.01$ ) and CDO treatments ( $p < 0.01$ ) (Figure 3). In the following period  
317 (T1-T2) growth rates in the BO treatment were significantly reduced only when compared  
318 to the CDO treatment ( $p < 0.01$ ). No significant differences in SGR were seen between any  
319 treatment groups or unexposed fish for the entire period (T0-T7 [May 19<sup>th</sup> – Jan 5<sup>th</sup>]) or for  
320 any other growth periods beyond the first two periods. Female and male SGR were not  
321 significantly different at any time period, therefore both sexes were pooled for statistical  
322 analysis.

323 *3.5. Condition factor and hepatosomatic index*

324 At T0 (May 19<sup>th</sup>), males (exposed and unexposed combined) had a significantly higher  
325 condition factor compared to females at  $0.68 \pm 0.0$  and  $0.64 \pm 0.0$ , respectively. At T1 (June  
326 30<sup>th</sup>), the condition factor was significantly higher in females in the BO treatment ( $0.66 \pm$   
327  $0.0$ ) compared to females in the other groups (control [ $0.62 \pm 0.0$ ], MDO [ $0.62 \pm 0.0$ ] and  
328 CDO [ $0.60 \pm 0.0$ ]). At no other time point were there significant differences found between  
329 any of the treatment groups (including control) or sex. Furthermore, no significant  
330 difference in age, HSI, or condition factor was seen between any treatment or sex at the  
331 end of the experimental period in January (Table 1).

332 *3.6. Reproductive development*

333 *3.6.1. Females*

334 Histological analyses revealed that 56% of female fish had spawned previously as  
335 determined by presence of residual oocytes, while 22% exhibited first time maturation with  
336 no evidence of previous spawning and the remaining specimens were immature (6%) or  
337 resting (16%). From the maturing females, 68% revealed a leading oocyte cohort that had

338 reached the vitellogenic stage II (Vtg II) and were categorized as advanced maturing with  
339 mean oocyte diameter of  $547 \pm 8 \mu\text{m}$ , a centrally placed nucleus and the cytoplasm filled  
340 with vitellogenin derived oil droplets (Fig. 4). In 32 % of maturing females, however, the  
341 most advanced oocyte cohort was in an early vitellogenic stage (Vtg I) and was thus  
342 categorized as early maturing with an oocyte diameter of  $446 \pm 11\mu\text{m}$  and vitellogenin  
343 derived yolk droplets only at the periphery of the cytoplasm and persisting cortical alveolar  
344 vesicles, often in combination with atresia (Fig. 4). Abnormal oocyte development,  
345 characterized by partial inclusion of cortical alveolar vesicles into the cytoplasm, non-  
346 radial yolk globule orientation around nucleus, and few oocytes in the most advanced  
347 oocyte cohort, was observed in 35 % of early maturing females with no statistical  
348 significance of treatment. Significant differences in gonadal maturity stage was observed  
349 in the BO exposed females exhibited by a lower percentage of advanced maturing (35%)  
350 and higher percentage of early maturing females (38%) compared to other treatment groups  
351 (mean percentage in advanced maturing stage was 61%) ( $p=0.042$ ) and when tested against  
352 the control group only, the significance increased (X-squared = 7.99,  $df = 2$ ,  $p\text{-value} =$   
353  $0.018$ ) (Fig. 5a). No significant differences were found between treatments in mean oocyte  
354 diameter, the relative number of oocytes in the leading cohort, presence of residual oocytes  
355 or frequency of atresic oocytes. However, significantly greater variation in oocyte diameter  
356 was observed in early maturing females in the BO treatment ( $443.5 \pm 42 \mu\text{m}$ ,  $n=7$ )  
357 compared to the control ( $409.0 \pm 10.7 \mu\text{m}$ ,  $p= 0.015$ ,  $n=5$ ).

358

359 Gonadosomatic index (GSI) in females ranged between 0.6 and 11.5 with no significant  
360 difference between any of the treatments (Fig. 5b). GSI (Mean  $\pm$  SE) for immature, resting,  
361 advanced maturing and early maturing females was ( $0.9 \pm 0.0$ ), ( $2.6 \pm 0.8$ ), ( $5.7 \pm 0.3$ ) and  
362 ( $3.6 \pm 0.3$ ), respectively. Advanced maturing female GSI was significantly higher than all  
363 other maturity stages ( $p<0.001$ ).

364

### 365 3.6.2. Males

366 Testis development appeared normal for males in all treatments with no significant  
367 difference in the frequency of occurrence of different maturity stages among the treatments  
368 (Fig. 6a). GSI in males at the end of the experiment (T7) ranged between 0.0 and 33.3 with

369 no significant difference between any of the treatments (Fig. 6b). Immature and resting fish  
370 made up 5.9% and 2.9% of the sampled males respectively while 53.9% of males were in  
371 an early stage of maturation (late Sc I) and 37.3% of the males were in a later stage of  
372 development (late Sc II) (see Fig S1. for maturity stage representations). Immature and  
373 resting males had a low mean GSI ( $2.0 \pm 1.6$  and  $2.0 \pm 0.9$ , respectively). Maturing males  
374 with late spermatocytes stage I had a lower GSI ( $15.8 \pm 0.8$ ) compared to those with more  
375 developed late spermatocytes stage II ( $22.6 \pm 1.0$ ).

376

#### 377 4. Discussion

##### 378 4.1 Exposure to dispersed oil and burned oil residue

379 The present study simulates conditions in which dispersant (CDO treatment) or *in situ*  
380 burning (BO treatment) might be used to combat an oil spill in Arctic waters in comparison  
381 to no action (MDO treatment). THC and PAH water concentrations in both MDO and CDO  
382 reflected environmentally realistic concentrations reported from experimental field trials  
383 and dispersant operations during actual oil spills (i.e. THC concentrations of 30-50 mg/L  
384 below the spill just after treatment before decreasing to <1-10 mg/L, and  $\sum$ PAH  
385 concentrations of 6-115 mg/L the first days or weeks after accidental oil spills) (Law,  
386 1978; Humphrey et al. 1987; Lunel et al. 1995; Short and Harris, 1996; Kingston, 1999;  
387 Reddy and Quinn, 1999; Lessard and DeMarco, 2000; Sammarco et al. 2013). Reports of  
388 hydrocarbon concentrations in seawater after *in situ* burning operations are scarce. PAH  
389 and THC levels in the present study are below seawater concentrations measured after  
390 experimentally spilled and burned oil in the Newfoundland Oil Burn Experiment ( $3.78$   
391  $\mu\text{g/L}$   $\sum$ 16 EPA PAHs) (Daykin et al. 1994), and above THC concentration from an oil spill  
392 simulation and test burning experiment in the Barents Sea ( $13 \mu\text{g/L}$ ) (Brandvik et al. 2010).

393

394 The overall THC and  $\sum$ 26 PAH concentrations in the Ctrl, MDO and CDO treatments were  
395 in agreement with previous experiments using the same nominal oil concentrations and  
396 exposure set-up as in the present study (Frantzen et al. 2015, 2016), and confirms that the  
397 addition of chemical dispersant increases the efficiency of the dispersion process leading  
398 to significantly elevated THC and PAH concentrations in CDO compared to MDO.  
399 Measured BO concentrations were  $8 \pm 2$  % of the measured MDO concentrations,

400 indicating that mechanical dispersion of BO into the water column was equally efficient as  
401 for oil. In the present study, an identical exposure protocol was used for all treatments to  
402 allow for direct comparison of effects between the oil spill response measures investigated.  
403 Energy was added to the seawater to simulate a dynamic exposure with wave energy for  
404 the period of 4 tidal systems (48 hours) (Merlin, 2005; Milinkovitch et al. 2011), and the  
405 measured concentrations of hydrocarbons represented both the water-soluble fraction as  
406 well as BO residue particles/dispersed oil droplets. Adding mixing energy to simulate wave  
407 action to the BO residue exposure dispersing it in the water column is, however, novel as  
408 previous studies have exposed organisms only to the burned oil WSF (Faksness et al. 2012;  
409 Gulec and Holdway, 1999), and reported measurements are taken only of seawater  
410 hydrocarbon concentrations underneath burned areas (Brandvik et al. 2010).

411

412 Forming of short-term temporary oil slicks, variation in oil adherence to equipment and  
413 mixing by fish movements between replicate tanks may be a source of the individual  
414 variability in THC and PAHs concentrations between replicate water samples, and the  
415 increased PAH/THC concentration at T48h compared to T24h observed in two individual  
416 tanks (one MDO and one CDO tank, respectively). Inter- and intra-tank variations did  
417 however not influence the overall significant difference in THC/PAH concentrations  
418 between the OSR actions investigated. Low concentrations of naphthalene measured in the  
419 control water may be considered elevated background levels with no potential toxic effects  
420 to biota (Molvær et al. 1997) and are evidence of the ubiquity of PAHs, especially  
421 naphthalene, one of the most abundant PAHs in the marine environment (Latimer and  
422 Zheng, 2003).

423

#### 424 *4.2 Physiological and reproductive effects*

425 No relationship was found between treatment and mortality. The sustained mortality rate  
426 in seen in all groups (both exposed and unexposed) is most likely due to the post spawning  
427 physiological state of the mature fish as confirmed by the presence of residual oocytes in  
428 56% of females. Handling stress at the beginning of the experiment could have induced  
429 higher mortality at this early time point. The mortality rate seen in this experiment (~24%)  
430 was lower than the mortality observed (~56%) in a long-term crude oil exposure on adult

431 feral polar cod held in captivity (Bender et al. 2016). Fish were in a good state of health as  
432 evidenced by an unanimously high condition factor and HSI in all treatment groups at the  
433 final sampling in January, although the HSI values reported for fish in the present study  
434 (8.5 - 9.6 %) were lower than for polar cod of a similar size held in captivity at the same  
435 time of year (10.9-13.1%) (Bender et al. 2016). Fish in the latter study were fed a natural  
436 diet of *Calanus sp.* zooplankton whereas commercial feed was used in the present study  
437 and this difference in diet may have influenced the HSI. Higher condition factor in males  
438 compared to females at the start of the experiment is most likely due to the difference in  
439 the timing of reproductive investment, where males start gonadal investment earlier in the  
440 season than females (Hop et al. 1995; Nahrgang et al. 2014).

441

442 Growth rates observed in polar cod of the present study were within reported ranges from  
443 previous studies of mature fish (Jensen et al. 1991; Hop et al. 1997). Furthermore, the  
444 observed trends in growth rate did not indicate significant long-term effects by any of the  
445 OSR actions. The transient decrease in SGR for the MDO and the CDO treatments  
446 compared to BO treatment, may however, be due to a transient appetite depression in these  
447 two groups in the first days following the exposure. Low feeding activity was visually  
448 observed at this time. No effect of crude oil exposure on appetite has been observed in  
449 polar cod previously; however, exposure to crude oil contaminated food did lead to reduced  
450 growth in exposed fish (Christiansen and George, 1995). The SGR in July (T1-T2) was  
451 highest ( $0.6 \pm 0.0$  % body weight change per day) in all treatment groups compared to all  
452 other periods (0.1-0.2 % change per day) and may reflect some compensatory growth  
453 following handling and fasting during exposure (Ali et al. 2003). Reduced feeding and  
454 growth was also observed in African catfish (*Claris gariepinus*) for two months following  
455 exposure to crude oil and dispersed crude oil (Nwaizuzu et al. 2016).

456 Females likely to spawn in the coming winter season were in the late maturing (Vg II) stage  
457 with a GSI around  $5.7 \pm 0.3$  while it is unclear when or if the females in the early maturing  
458 stage would spawn. The timing of spawning from other laboratory polar cod populations  
459 in an analogous reproductive stage suggests that the late maturing females would be ready  
460 to spawn in March (Bender et al. 2016). The high frequency of early maturing females may  
461 be an evidence of stress resulting in reduced investment into reproductive development

462 (Rideout et al. 2005; Kime, 1995). However, with only a single histological sampling point  
463 it is not possible to resolve if the females in the early maturation stage initiated  
464 vitellogenesis at the same time as females in the late maturing phase and then paused  
465 further development or if vitellogenesis was ongoing at a reduced pace. Nevertheless,  
466 abnormal oocyte development observed in some early maturing females (i.e.  
467 nonconforming yolk globule orientation) may suggest that vitellogenesis was interrupted  
468 and that these oocytes may soon be reabsorbed through atresia (Rideout et al. 2005).  
469 Reabsorbing vitellogenic oocytes result in a lower fecundity and have been observed in  
470 Atlantic cod under environmental stressors like low temperature, poor nutritional, and  
471 pollution (Rideout et al. 2005). However, no increased incidence of atresia was observed  
472 in early maturing females at sampling. The increased frequency of early maturing females  
473 in the BO exposure group could indicate a reduced population fecundity compared to the  
474 unexposed and control groups. The large variation in oocyte size of early maturing females  
475 exposed to BO treatment may be early signs of reabsorption of vitellogenic oocytes or of  
476 some other disruption of oogenesis. PAHs have endocrine disrupting properties with  
477 potential to impair vitellogenesis in fish (Hylland et al. 2006; Aruwke and Goksøyr, 2003).  
478 Despite low tissue PAH concentrations, reproductive impairment was seen in Gulf killifish  
479 two months after the Deepwater Horizon oil spill (Whitehead et al. 2012). Similarly,  
480 depressed plasma 17 $\beta$ -estradiol concentrations were seen in dolly varden and yellowfin sol  
481 after the Exxon Valdez oil spill (Sol et al. 2000).

482

483 Although the overall THC/PAH concentration in BO was an order of magnitude lower than  
484 in MDO and CDO, differences in physical characteristics of the BO may have altered the  
485 exposure route and time exposed to the BO treatment and thus enhanced the toxicity of the  
486 BO residue compared to MDO and CDO. Burned oil residues have increased viscosity and  
487 stickiness compared to crude oils (Fritt-Rasmussen et al. 2015; Fingas, 2016). The size of  
488 oil droplets and BO particles were not measured in this experiment; however, BO particles  
489 were most likely larger than MDO and CDO oil droplets as they could be observed with  
490 the naked eye as “black dots” in the water column during the exposure. In contrast to BO  
491 particles, mechanically and chemically dispersed oil droplets are generally found to be in  
492 the size of  $\leq 100 \mu\text{m}$  and  $10\text{-}50 \mu\text{m}$ , respectively (Lessard and DeMarco, 2000; Lewis and



493 Daling, 2001), and could not be observed by eye. The BO residue may have clogged gills,  
494 adhered to skin, and/or been ingested and stick to the digestive tract of the fish and thereby  
495 increased the exposure time to PAHs and other compounds (including UCM) present in  
496 the BO residue compared to MDO and CDO. For instance, burned residues can be enriched  
497 in high molecular weight PAHs, pyrogenic PAHs, and metals (Buist 2004; Shigenaka et  
498 al. 2012; Fingas, 2016). Indeed, the UCM profiles of burned oil residues from DWH burns  
499 have an altered shape compared to unburned fresh oil with enrichment of more volatile *n*-  
500 alkanes (Stout and Payne, 2016). These compounds were not quantified in this study  
501 despite their potential contribution to adverse effects. Other studies investigating acute  
502 toxicity of BO residues have found non-toxic or little effects on snails and amphipods at  
503 concentrations below 1.46 mg/L THC or 5.83 µg/L total PAHs when exposed for 24 hours  
504 (Gulec & Holdway, 1999). No additional effect of the WSF after burning on *Calanus* spp.  
505 when exposed for 96 h at concentrations less than 1 mg/L THC compared to the WSF prior  
506 to burning (Faksness et al. 2012). Australian bass exposed to burned oil WAF for four days  
507 did express EROD activity levels, a biomarker of PAH exposure, similar to levels in fish  
508 exposed to mechanically dispersed oil WAF but significantly lower than fish exposed  
509 chemically dispersed WAF (Cohen et al. 2006) However, knowledge on the toxicokinetics  
510 of BO compared to other treatments is still lacking and there is a strong uncertainty when  
511 it comes to toxicity of UCM.

512

513 Gonadal investment occurred earlier in males compared to females in accordance with  
514 other studies investigating polar cod reproductive development (Bender et al. 2016;  
515 Nahrgang et al. 2014). No effect of any treatment on the timing, structure, or investment in  
516 male reproductive development indicated the relative resilience of this sex. Male polar cod  
517 invest less energy in reproductive development compared to females (Hop et al. 1997),  
518 which may allow for greater tolerance to xenobiotic exposure during the reproductive  
519 development period. Inclusion of the unexposed fish into the experimental design provided  
520 additional information on background physiological change due to size differences. The  
521 smaller unexposed fish (Unexp. 1) were generally younger and less likely to mature in the  
522 current season, with an increased prevalence of immature individuals and lower HSI  
523 compared to their larger unexposed counterparts (Unexp. 2). Maturing individuals in

524 Unexp. 1 had generally lower GSI values than maturing fish in larger size categories  
525 emphasising the importance of size in reproductive output (Nahrgang et al. 2014). The  
526 Unexp. 2 fish were of a similar age and larger size (both length and weight) than fish  
527 included in the exposure experiment but exhibited a higher mortality rate and no immature  
528 individuals further supporting the hypothesis that mortality is related to previous spawning  
529 events.

530

#### 531 4.4. Conclusion and Outlook

532 The transient effects observed on growth rate in the present study did not affect overall  
533 growth and survival of the polar cod during this 7-month experiment, demonstrating the  
534 robustness of adult polar cod. Early life stages of polar cod however have demonstrated  
535 increased sensitivity to crude oil (Nahrgang et al., 2016) and therefore are a major source  
536 of uncertainty when assessing population level impacts of a potential spill and response  
537 actions. The decreased frequency of maturing females exposed to the BO treatment is of  
538 importance with regard to potential reductions in population fecundity (Spromberg and  
539 Meador, 2006) and may reveal a sensitivity of polar cod when exposed to dispersed BO  
540 residues from this OSR countermeasure. This effect observed on the potential reproductive  
541 output of female polar cod exposed to BO is not explained by the relatively low THC and  
542 PAH levels measured in the BO treatment, therefore other hydrocarbon compounds, the  
543 UCM, physical properties and toxicokinetics of the BO residue warrants further  
544 investigation.

545

546 With increasing anthropogenic activity in the Arctic, polar cod are at risk for exposure to  
547 petroleum and OSR actions through accidental spills. The purpose of a NEBA is to aid in  
548 the decision making of an OSR and evaluate the environmental effects of an action or  
549 combination of actions *a priori*. However, no long-term effects on polar cod survival and  
550 growth were observed under acute dynamic exposure conditions to BO, MDO or CDO.  
551 Observed effects were overall limited. The physiological effects of BO need further  
552 investigation, including exposure method validation and additional chemical analysis. The  
553 reduction of overall oil by ~90% with *in-situ* burning will reduce the oil volume and the  
554 potential for organisms to come into contact with the oil and may still be a viable option

555 despite the potential adverse effects observed in this study. The NEBA process will help  
556 deciding what response strategy eventually will lead to the least environmental impact and  
557 fastest recovery. Overall, this study demonstrates the robustness of the adult life stage of  
558 polar cod to a variety of OSR actions. The final endpoints of reproduction, such as  
559 fecundity, fertilization success and survival and fitness of offspring of exposed polar cod,  
560 were not included in the present study, however these endpoints would provide valuable  
561 information on ecosystem sensitive for the NEBA in the Arctic marine system. This study  
562 provides new evidence to aid in OSR decision making on the sensitivities of the Arctic key  
563 species polar cod.

#### 564 *Ethics Statement*

565 Permission to carry out this experiment was granted by the Norwegian Animal Welfare Authority  
566 in 2015 (ID 7851).

#### 567 *Acknowledgements*

568 The authors would like to thank the members of the International Association of Oil and  
569 Gas Producers, Arctic Oil Spill Response Technology – Joint Industry Programme for  
570 funding this project. The Principals of the JIP are: BP Exploration Operating Company,  
571 Chevron Canada Limited, ConocoPhillips Corporation, Eni E & P, ExxonMobil Joint  
572 Research Limited, North Caspian Operating Company, Shell International Exploration and  
573 Production BV, Statoil Petroleum AS and Total E & P Recherche et Développement. The  
574 authors greatly appreciate the help from the crew of the RV Helmer Hanssen for collecting  
575 and transporting the fish and the technical staff at the Akvaplan-niva marine laboratory in  
576 Tromsø, Norway for their polar cod husbandry expertise. Additional funding was allocated  
577 by the flagship research programme "Environmental impact of industrial development in  
578 the north (MIKON)" of the Fram Centre and the NRC projects EWMA (grant number  
579 195160) and ARCEX (grant number 228107).

580

581 **References**

- 582 Ali, M. Nicieza, A. Wootton, R.J. 2003. Compensatory growth in fishes: a response to growth  
583 depression. *Fish. Fish.* 4, 147-190.
- 584 Andersen, Ø. Frantzen, M. Rosland, M. Timmerhaus, G. Skugor, A. Krasnov, A. 2015. Effects of  
585 crude oil exposure and elevated temperature on the liver transcriptome of polar cod  
586 (*Boreogadus saida*). *Aquat. Toxicol.* 165, 9–18. doi:10.1016/j.aquatox.2015.04.023
- 587 Arukwe, A. Goksøyr, A. 2003. Eggshell and egg yolk proteins in fish: hepatic proteins for the next  
588 generation: oogenetic, population, and evolutionary implications of endocrine disruption.  
589 *Comp. Hepatol.* 2, 1–21.
- 590 Bailly, N. 2008. *Boreogadus saida* (Lepechin, 1774). In: Froese, R. and D. Pauly. Editors. (2016).  
591 FishBase. Accessed through: World Register of Marine Species at  
592 <http://www.marinespecies.org/aphia.php?p=taxdetails&id=126433> on 2016-11-19
- 593 Bender, M.L. Frantzen, M. Vieweg, I. Falk-petersen, I. Kreutzer, H. Rudolfsen, G. Erik, K.  
594 Dubourg, P. Nahrgang, J. 2016. Effects of chronic dietary petroleum exposure on  
595 reproductive development in polar cod (*Boreogadus saida*). *Aquat. Toxicol.* 180, 196–208.  
596 doi:10.1016/j.aquatox.2016.10.005
- 597 Beyer, J. Trannum, H.C. Bakke, T. Hodson, P. V. Collier, T.K. 2016. Environmental effects of the  
598 Deepwater Horizon oil spill: A review. *Mar. Pollut. Bull.* 110, 28–51. doi:  
599 <http://dx.doi.org/10.1016/j.marpolbul.2016.06.027>
- 600 Bird, K.J. Charpentier, R.R. Gautier, D.L. Houseknecht, D.W. Klett, T.R. Pitman, J.K. Moore, T.E.  
601 Schenk, C.J. Tennyson, M.E. Wandrey, C.R. 2008. Circum-Arctic Resource Appraisal:  
602 Estimates of Undiscovered Oil and Gas North of the Arctic Circle (RPRT), Fact Sheet.
- 603 Blenkinsopp, S.A. Sergy, G. Doe, K. Wohlgeschaffent, G. Li, K. Fingas, M. 1996. Toxicity of the  
604 Weathered Crude Oil Used at the Newfoundland Offshore Burn Experiment (NOBE) and the  
605 Resultant Burn Residue. *Spill Sci. Technol. Bull.* 3, 277–280.
- 606 Booth, A.M. Scarlett, A.G. Lewis, C.A. Belt, S.T. Rowland, S.J. 2008. Unresolved complex  
607 mixtures (UCMs) of aromatic hydrocarbons: branched alkyl indanes and branched alkyl  
608 tetralins are present in UCMs and accumulated by and toxic to, the mussel *Mytilus edulis*.  
609 *Environ. Sci. Technol.* 42, doi: 8122e8126.
- 610 Booth, A.M. Sutton, P.A. Anthony Lewis, C. Lewis, A.C. Scarlett, A. Chau, W. Widdows, J.  
611 Rowland, S.J. 2007. Unresolved complex mixtures of aromatic hydrocarbons: thousands of  
612 overlooked persistent, bio-accumulative, and toxic contaminants in mussels. *Environ. Sci.*  
613 *Technol.* 41, doi: 457e464.
- 614 Bradstreet, M.S.W. Cross, W.E. 1982. Trophic Relationships at High Arctic Ice Edges. *Arctic* 35,  
615 1–12. doi:10.1016/0266-9838(93)90013-8
- 616 Brandvik, P.J. Faksness, L-G. Dickins, D. Bradford, J. 2006. Weathering of Oil Spills Under Arctic  
617 Conditions: Field Experiments with Different Ice Conditions Followed by In-situ Burning.

- 618 Presented at the 2006 Third Annual NATO/CCMS Oil Spill Response Workshop, Oct 11-13,  
619 Dartmouth, NS, Canada.
- 620 Brandvik, P.J. Fritt-Rasmussen, J. Reed, M. Bodsberg, N.R. 2010. Predicting ignitability for in situ  
621 burning of oil spills as a function of oil type and weathering degree. In: Proceedings of the  
622 33rd AMOP Seminar on Environmental Contamination and Response, Environment Canada,  
623 Ottawa, ON, pp. 773–786.
- 624 Buist, I.A. 2004. In Situ Burning for Oil Spills in Ice-Covered Waters, in: Interspill. pp. 1–24.
- 625 Buist, I.A. Potter, S.G. Trudel, B.K. Shelnut, S.R. Walker, A.H. Scholz, D.K. Brandvik, P.J. Fritt-  
626 Rasmussen, J. Allen, A.A. Smith, P. 2013. In Situ Burning in Ice-Affected Waters: State of  
627 Knowledge Report, Final report 7.1.1, Report from Joint Industry Programme.
- 628 Christiansen, J. George, S. 1995. Contamination of food by crude oil affects food selection and  
629 growth performance, but not appetite, in an Arctic fish, the polar cod (*Boreogadus saida*).  
630 Polar Biol. 15, 277–281. doi:10.1007/BF00239848
- 631 Claireaux, G. Théron, M. Prineau, M. Dussauze, M. Merline, F.-X. Le Floch, S. 2013. Effects of  
632 oil exposure and dispersant use upon environmental adaptation performance and fitness in the  
633 European sea bass, *Dicentrarchus labrax*. Aquat. Toxicol. 131, 160–170.  
634 doi:10.1016/j.aquatox.2013.01.004
- 635 Cohen, A.M. Nugegoda, D. 2000. Toxicity of Three Oil Spill Remediation Techniques to the  
636 Australian Bass *Macquaria novemaculeata*. Ecotoxicol. Environ. Saf. 47, 178–185.  
637 doi:10.1006/eesa.2000.1946
- 638 Cohen, A. Gagnon, M.M. Nugegoda, D. 2006. Oil Spill Remediation Techniques Can Have  
639 Different Impacts on Mixed Function Oxygenase Enzyme Activities in Fish. Bull. of Environ.  
640 Contam. and Toxicol. 76, 5, 855-862.
- 641 David, C. Lange, B. Krumpfen, T. Schaafsma, F. Andries, J. Hauke, V.F. David, C. 2015. Under-  
642 ice distribution of polar cod *Boreogadus saida* in the central Arctic Ocean and their  
643 association with sea-ice habitat properties. Polar Biol. doi:10.1007/s00300-015-1774-0
- 644 Daykin, M. Sergy, G. Aurand, D. Shigenaka, G. Wang, Z. Tang, A. 1994. Aquatic toxicity resulting  
645 from in-situ burning of oil- on-water. In: Proceedings of the Seventeenth Arctic and Marine  
646 Oil Spill Program Technical Seminar, Vancouver, British Columbia, Canada.
- 647 Eni Norge, 2015 “Goliat Crude oil Blend” accessed on May 30th 2017  
648 [http://www.eninorge.com/Documents/Goliat\\_blend.pdf](http://www.eninorge.com/Documents/Goliat_blend.pdf)
- 649 Faksness, L.G. Hansen, B.H. Altin, D. Brandvik, P.J. 2012. Chemical composition and acute  
650 toxicity in the water after in situ burning- A laboratory experiment. Mar Poll. Bull. 64, 49-55.  
651 doi:10.1016/j.marpolbul.2011.10.024
- 652 Fingas, M.F. 1995. Oil Spills and their cleanup. Chemistry and Industry, December, pp. 1005-1008.

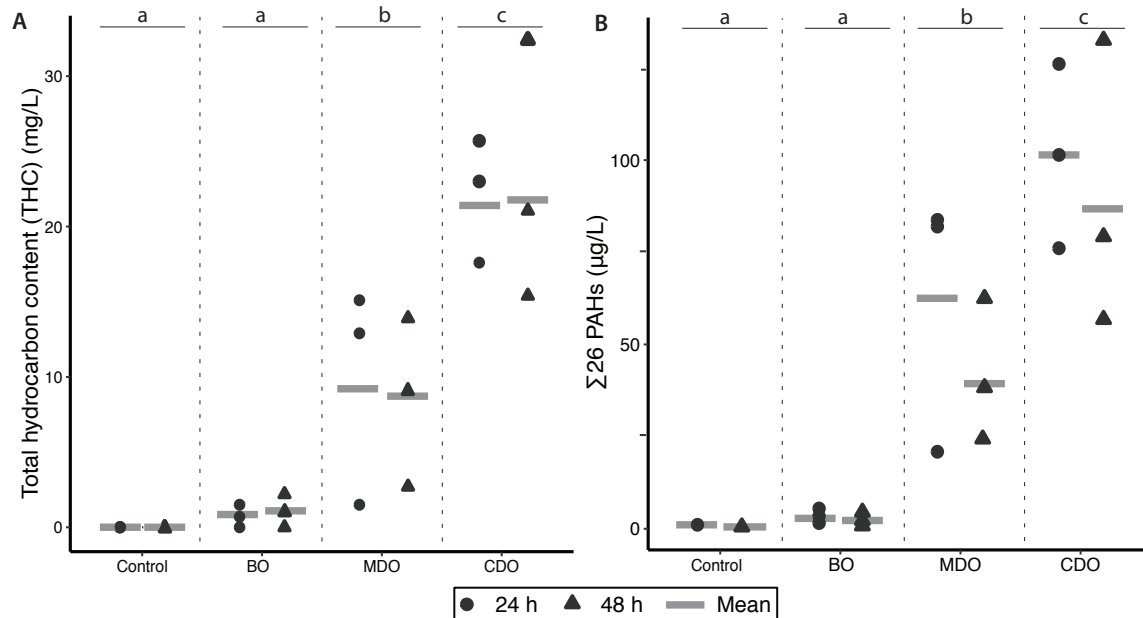
- 653 Fingas, M.F. 2011. Oil Spill Dispersants: A Technical Summary. In Oil Spill Science and  
654 Technology. Edited by M. Fingas. Gulf Professional Publishing, Boston. pp. 435–582
- 655 Fingas, M.F. 2016. Oil Spill Science and Technology (Second ed.). Gulf Professional Publishing,  
656 Boston. pp 1-1078. 978-0-12-809413-6
- 657 Forbes, V. Palmqvist, A. Bach, L. 2006. The use and misuse of biomarkers in ecotoxicology.  
658 Environ. Toxicol. Chem. 25, 272–280.
- 659 Frantzen, M. Henrik, H.B. Geraudie, P. Palerud, J. Falk-Petersen, I.-B. Olsen, G.H. Camus, L.  
660 2015. Acute and long-term biological effects of mechanically and chemically dispersed oil on  
661 lump sucker (*Cyclopterus lumpus*) Mar. Environ. Res. 105, 8–19.  
662 doi:10.1016/j.marenvres.2014.12.006
- 663 Frantzen, M. Regoli, F. Ambrose Jr. W.G. Nahrgang, J. Geraudie, P. Benedetti, M. Locke V, W.L.  
664 Camus, L. 2016. Biological effects of mechanically and chemically dispersed oil on the  
665 Icelandic scallop (*Chlamys islandica*). Ecotoxicol. Environ. Saf. 127, 95–107.  
666 doi:10.1016/j.ecoenv.2016.01.011
- 667 Fritt-Rasmussen, J. Wegeberg, S. Gustavson, K. 2015. Review on Burn Residues from In Situ  
668 Burning of Oil Spills in Relation to Arctic Waters. Water Air Soil Pollut. 226.  
669 doi:10.1007/s11270-015-2593-1
- 670 Guenette, C.C. Sveum, P. 1995. In Situ Burning of Emulsions R & D in Norway. Spill Sci. Technol.  
671 Bull. 2, 75–77.
- 672 Gulec, I. Holdway, D.A. 1999. The Toxicity of Laboratory Burned Oil to the Amphipod  
673 *Allorchestes compressa* and the Snail *Polinices conicus*. Spill Sci. Technol. Bull. 5, 135–139.
- 674 Gulec, I. Leonard, B. Holdway, D.A. 1997. Oil and Dispersed Oil Toxicity to Amphipods and  
675 Snails. Spill Sci. Technol. Bull. 4, 1–6.
- 676 Harsem, Ø. Eide, A. Heen, K. 2011. Factors influencing future oil and gas prospects in the Arctic.  
677 Energy Policy 39, 8037–8045. doi:10.1016/j.enpol.2011.09.058
- 678 Hop, H. Graham, M. Wordeau, V.L. 1995. Spawning energetics of Arctic cod (*Boreogadus saida*)  
679 in relation to seasonal development of the ovary and Plasma Sex Steroid Levels. Can. J. Fish.  
680 Aquat. Sci. 52, 541–550.
- 681 Hop, H. Welch, H.E. Crawford, R.E. Reynolds, J.B. 1997. Population structure and feeding ecology  
682 of Arctic cod schools in the Canadian High Arctic, in: Fish Ecology in Arctic North America.  
683 American Fisheries Society Symposium. Bethesda, Maryland, pp. 68–80.
- 684 Horng, C.Y. Lin, H.C. Lee, W. 2010. A reproductive toxicology study of phenanthrene in medaka  
685 (*Oryzias latipes*). Arch. Environ. Contam. Toxicol. 58, 131–139. doi:10.1007/s00244-009-  
686 9335-6

- 687 Humphrey, B. Green, D.R. Fowler, B.R. Hope, D. Boehm, P.D. 1987. The Fate of Oil in the Water  
688 Column Following Experimental Oil Spills in the Arctic Marine Nearshore. *Arctic* 40, 124–  
689 132. doi:10.14430/arctic1808
- 690 Hunt, J. 2009. Mission without a Map: The Politics and Policies of Restoration Following the  
691 Exxon Valdez Oil Spill (1989 - 2002). Exxon Valdez Oil Spill Trustee Council. Anchorage,  
692 Alaska.
- 693 Hylland, K. 2006. Polycyclic aromatic hydrocarbon (PAH) ecotoxicology in marine ecosystems. *J.*  
694 *Toxicol. Env. Health Part A* 69, 109–123.
- 695 Jonsson, H. Sundt, R.C. Aas, E. Sanni, S. 2009. The Arctic is no longer put on ice: Evaluation of  
696 Polar cod (*Boreogadus saida*) as a monitoring species of oil pollution in cold waters. *Mar.*  
697 *Pollut. Bull.* 60, 390–395. doi:10.1016/j.marpolbul.2009.10.014
- 698 Kime, D.E. 1995. The effects of pollution on reproduction in fish. *Rev. Fish Biol. Fish.* 5, 52–95.  
699 doi:10.1007/BF01103366
- 700 Kingston, P. 1999. Recovery of the marine environment following the Braer spill, Shetland, in:  
701 *International Oil Spill Conference*. pp. 103–109.
- 702 Latimer, J. S. and Zheng, J. 2003. The Sources, Transport, and Fate of PAHs in the Marine  
703 Environment, in *PAHs: An Ecotoxicological Perspective* (ed P. E. T. Douben), John Wiley &  
704 Sons, Ltd, Chichester, UK. doi: 10.1002/0470867132.ch2
- 705 Law, R.J. 1978. Determination of Petroleum Hydrocarbons in Water, Fish and Sediments  
706 Following the Ekofisk Blow-Out. *Mar. Pollut. Bull.* 9, 321–324.
- 707 Lessard, R.R. and Demarco, G. 2000. The Significance of Oil Spill Dispersants. *Spill Sci. Technol.*  
708 *Bull.* 6, 59–68.
- 709 Jensen, T. Ugland, K.I. Anstensrud, M. 1991. Aspects of growth in Arctic cod, *Boreogadus saida*  
710 (Lepechin 1773). *Polar Res.* 10, 547–552. doi:10.1111/j.1751-8369.1991.tb00672.x
- 711 Lewis A. and Daling P. S. 2001. Oil Spill Dispersants, SINTEF report, Trondheim.
- 712 Lunel, T.I.M. Swannell, R. Rusin, J.A.N. Wood, P. Bailey, N. Halliwell, C. Davies, L.  
713 Sommerville, M. Dobie, A. Mitchell, D. Mcdonagh, M. Lee, K. 1995. Monitoring the  
714 Effectiveness of Response Operations During the Sea Empress Incident: a Key Component  
715 of the Successful Counter-pollution Response. *Spill Sci. Technol. Bull.* 2, 99–112.
- 716 Melbye, A.G. Brakstad, O.G. Hokstad, J.N. Gregersen, I.K. Hansen, B.H. Booth, A.M. Rowland,  
717 S.J. Tollefsen, K.E. 2009. Chemical and toxicological characterization of an unresolved  
718 complex mixture-rich biodegraded crude oil. *Environ. Toxicol. Chem.* 28, 1815–1824.  
719 doi:10.1897/08-545.1
- 720 Merlin, F.X. 2005. Traitement aux dispersants des nappes de pétrole en mer. CEDRE (Centre de  
721 Documentation de Recherche et d'expérimentations sur les pollutions accidentelles des eaux),  
722 Brest, France.

- 723 Milinkovitch, T. Ndiaye, A. Sanchez, W. Le Floch, S. Thomas-Guyon, H. 2011. Liver antioxidant  
724 and plasma immune responses in juvenile golden grey mullet (*Liza aurata*) exposed to  
725 dispersed crude oil. *Aquat. Toxicol.* 101, 155–164. doi:10.1016/j.aquatox.2010.09.013
- 726 Milinkovitch, T. Lucas, J. Le Floch, S. Thomas-Guyon, H. Lefrançois. 2012. Effect of dispersed  
727 crude oil exposure upon the aerobic metabolic scope in juvenile golden grey mullet  
728 (*Liza aurata*). *Mar. Poll. Bull.* 64, 4, 865–871. doi: 10.1016/j.marpolbul.2012.01.023
- 729 Molvær J. J. Knutzen, J. Magnusson, B. Rygg, J. Skei og J. Sørensen 1997. Klassifisering av  
730 miljøkvalitet i fjorder og kystfavann. SFT's veiledning 97:03. TA nr.1467/1997. 36 s
- 731 Mueter, F.J. Nahrgang, J. Nelson, R.J. Berge, J. 2016. The ecology of gadid fishes in the  
732 circumpolar Arctic with a special emphasis on the polar cod (*Boreogadus saida*). *Polar Biol.*  
733 doi:10.1007/s00300-016-1965-3
- 734 Nahrgang, J. Camus, L. Carls, M.G. Gonzalez, P. Jönsson, M. Taban, I.C. Bechmann, R.K.  
735 Christiansen, J.S. Hop, H. 2010. Biomarker responses in polar cod (*Boreogadus saida*)  
736 exposed to the water soluble fraction of crude oil. *Aquat. Toxicol.* 97, 234–242.  
737 doi:10.1016/j.aquatox.2009.11.003
- 738 Nahrgang, J. Varpe, Ø. Korshunova, E. Murzina, S. Hallanger, I.G. Vieweg, I. Berge, J. 2014.  
739 Gender Specific Reproductive Strategies of an Arctic Key Species (*Boreogadus saida*) and  
740 Implications of Climate Change. *PLoS One* 9, e98452. doi:10.1371/journal.pone.0098452
- 741 Nahrgang, J. Dubourg, P. Frantzen, M. Storch, D. Dahlke, F. Meador, J. 2016. Early life stages of  
742 an arctic keystone species (*Boreogadus saida*) show high sensitivity to a water-soluble  
743 fraction of crude oil. *Environ. Pollut.* doi:10.1016/j.envpol.2016.07.044
- 744 Nwaizuzu, C. Joel, O.F., Sikoki, F.D. 2016 . Synergistic Effects of Dispersed Bonny Light Crude  
745 Oil on Selected Aquatic Organism. In proceedings from the Society of Petroleum Engineers  
746 Nigeria Annual International Conference and Exhibition, Lagos, Nigeria, 2–4 August 2016.
- 747 Peterson, C. Rice, S. Short, J. Esler, D. Bodkin, J. Ballachey, B. Irons, D. 2003. Long-term  
748 ecosystem response to the Exxon Valdez oil spill. *Science* 80. 302, 2082–2086.  
749 doi:10.1126/science.1084282
- 750 R Development Core Team, 2014. R: A Language and Environment for Statistical Computing. R  
751 Foundation for Statistical Computing, Vienna, Austria.
- 752 Ramachandran, S.D. Hodson, P. V, Khan, C.W. Lee, K. 2004. Oil dispersant increases PAH uptake  
753 by fish exposed to crude oil. *Ecotoxicol. Environ. Saf.* 59, 300–308.  
754 doi:10.1016/j.ecoenv.2003.08.018
- 755 Reddy, C.M. Quinn, J.G. 1999. GC-MS analysis of total petroleum hydrocarbons and polycyclic  
756 aromatic hydrocarbons in seawater samples after the North Cape oil spill. *Mar. Pollut. Bull.*  
757 38, 126-135.
- 758 Rideout, R.M. Rose, G.A. Burton, M.P.M. 2005. Skipped spawning in female iteroparous fishes.  
759 *Fish Fisheries.* 6, 50–72.



- 760 Sammarco, P.W. Kolian, S.R. Warby, R.A.F. Bouldin, J.L. Subra, W.A. Porter, S.A. 2013.  
761 Distribution and concentrations of petroleum hydrocarbons associated with the BP/Deepwater  
762 Horizon Oil Spill, Gulf of Mexico. Mar. Poll. Bull. 73, 129-143. doi:  
763 10.1016/j.marpolbul.2013.05.029
- 764 Shigenaka, G. Overton, E. Meyer, B. Gao, H. Miles, S. 2015. Physical and chemical characteristics  
765 of in-situ burn residue and other environmental oil samples collected during the Deepwater  
766 Horizon spill response. pp. 1–11.
- 767 Short, J.W. Harris, P.M. 1996. Petroleum hydrocarbons in caged mussels deployed in Prince  
768 William sound after the Exxon Valdez oil spill. Am. Fish. Soc. Symposium 18, 29-39.
- 769 Sol, S.Y. Johnson, L.L. Horness, B.H. Collier, T.K. 2000. Relationship between oil exposure and  
770 reproductive parameters in fish collected following the Exxon Valdez oil spill. Mar. Pollut.  
771 Bull. 40, 1139–1147. doi:10.1016/S0025-326X(00)00074-6
- 772 Spromberg, J.A. and Meador, J.P. 2006. Relating chronic toxicity responses to population- level  
773 effects: A comparison of population-level parameters for three salmon species as a function  
774 of low-level toxicity. Ecol. Modell. 199, 240–252. doi:10.1016/j.ecolmodel.2006.05.007
- 775 Stout, S.A. and Payne, J.R. 2016. Chemical composition of floating and sunken in-situ burn  
776 residues from the Deepwater Horizon oil spill. Mar Poll Bull. 108,186-202.  
777 <http://dx.doi.org/10.1016/j.marpolbul.2016.04.031>
- 778 Vignet, C. Le Menach, K. Mazurais, D. Lucas, J. Perrichon, P. Le Bihanic, F. Devier, M.-H.  
779 Lyphout, L. Frère, L. Bégout, M.-L. Zambonino-Infante, J.-L. Budzinski, H. Cousin, X. 2014.  
780 Chronic dietary exposure to pyrolytic and petrogenic mixtures of PAHs causes physiological  
781 disruption in zebrafish - part I: Survival and growth. Environ. Sci. Pollut. Res. 21, 13804–  
782 13817. doi:10.1007/s11356-014-2629-x
- 783 Whitehead, A. Dubansky, B. Bodinier, C. Garcia, T.I. Miles, S. Pilley, C. Raghunathan, V. Roach,  
784 J.L. Walker, N. Ronald, B. Rice, C.D. Galvez, F. 2012. Genomic and physiological footprint  
785 of the Deepwater Horizon oil spill on resident marsh fishes. Proc. Natl. Acad. Sci. 109,  
786 20298–20302. doi:10.1073/pnas.1109545108
- 787 Wu, D. Wang, Z. Hollebone, B. McIntosh, S. King, T. Hodson, P. V. 2012. Comparative  
788 toxicity of four chemically dispersed and undispersed crude oils to rainbow trout  
789 embryos. Environ. Toxicol. Chem. 31, 754–765. doi:10.1002/etc.1739
- 790 Yamada, M. Takada, H. Toyoda, K. Yoshida, A. Shibata, A. Nomura, H. Wada, M. Nishimura, M.  
791 Okamoto, K. Ohwada, K. 2003. Study on the fate of petroleum-derived polycyclic aromatic  
792 hydrocarbons (PAHs) and the effect of chemical dispersant using an enclosed ecosystem,  
793 mesocosm. Mar. Pollut. Bull. 47, 105–113. doi:10.1016/S0025-326X(03)00102-4
- 794 Yu, X. Xu, C. Liu, H. Xing, B. Chen, L. Zhang, Q. 2015. Effects of Crude Oil and  
795 Dispersed Crude Oil on the Critical Swimming Speed of Puffer Fish , *Takifugu*  
796 *rubripes*. Bull. Environ. Contam. Toxicol. 94, 549–553. doi:10.1007/s00128-015-  
797 1507-7



1  
 2 Figure 1. (a) THC and (b)  $\Sigma 26$  PAH concentrations at t24 (circles) and t48 (triangles) for  
 3 all treatment groups with mean concentrations illustrated by black bars. Treatment mean  
 4 concentrations that do not share a letter are significantly different ( $p < 0.01$ ).

5

6 **Table 1.** Summary of polar cod sampled in January after a 7-month monitoring period  
 7 following 48 h exposure to *in situ* burned oil residues [BO], mechanically dispersed oil  
 8 [MDO], and chemically dispersed oil [CDO] treatment, and a control group. Unexposed  
 9 fish have size distributions which fall outside the intermediate range included in the  
 10 exposure experiment. Age, as determined by otoliths, total length, total weight,  
 11 hepatosomatic index (HSI), and condition factor were calculated for all fish. All values  
 12 are mean  $\pm$  SE.

| Treatment | Number of fish sampled |       |       | Age           | Length (cm)    | Total Weight (g) | HSI (%)       | Condition factor |
|-----------|------------------------|-------|-------|---------------|----------------|------------------|---------------|------------------|
|           | Females                | Males | Total |               |                |                  |               |                  |
| Control   | 27                     | 20    | 48    | 4.7 $\pm$ 0.1 | 20.0 $\pm$ 0.2 | 56.5 $\pm$ 2.0   | 9.3 $\pm$ 0.3 | 0.53             |
| BO        | 26                     | 22    | 49    | 4.7 $\pm$ 0.1 | 19.8 $\pm$ 0.2 | 56.4 $\pm$ 2.4   | 9.3 $\pm$ 0.3 | 0.53             |
| MDO       | 20                     | 19    | 40    | 4.4 $\pm$ 0.1 | 19.7 $\pm$ 0.2 | 54.3 $\pm$ 2.1   | 9.5 $\pm$ 0.4 | 0.53             |
| CDO       | 25                     | 18    | 46    | 4.5 $\pm$ 0.1 | 19.9 $\pm$ 0.2 | 56.2 $\pm$ 2.1   | 9.6 $\pm$ 0.3 | 0.54             |
| Unexp. 1  | 12                     | 18    | 30    | 3.8 $\pm$ 0.2 | 17.5 $\pm$ 0.2 | 38.0 $\pm$ 1.8   | 8.5 $\pm$ 0.3 | 0.55             |
| Unexp. 2  | 17                     | 6     | 23    | 4.6 $\pm$ 0.2 | 22.3 $\pm$ 0.3 | 80.0 $\pm$ 2.8   | 9.4 $\pm$ 0.4 | 0.54             |

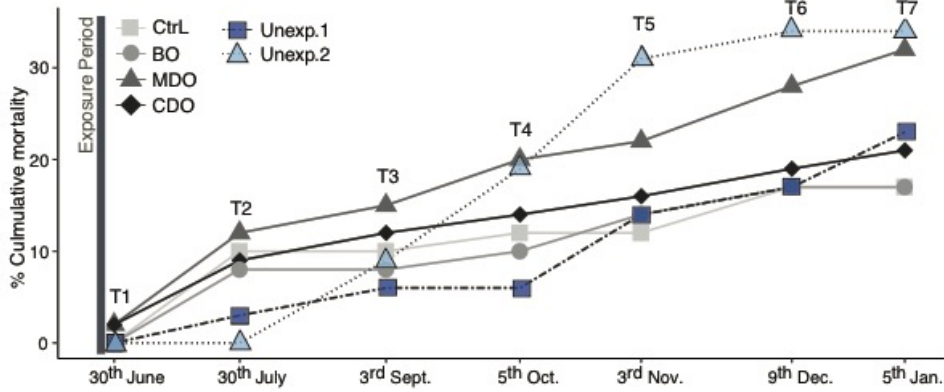
13

14

15

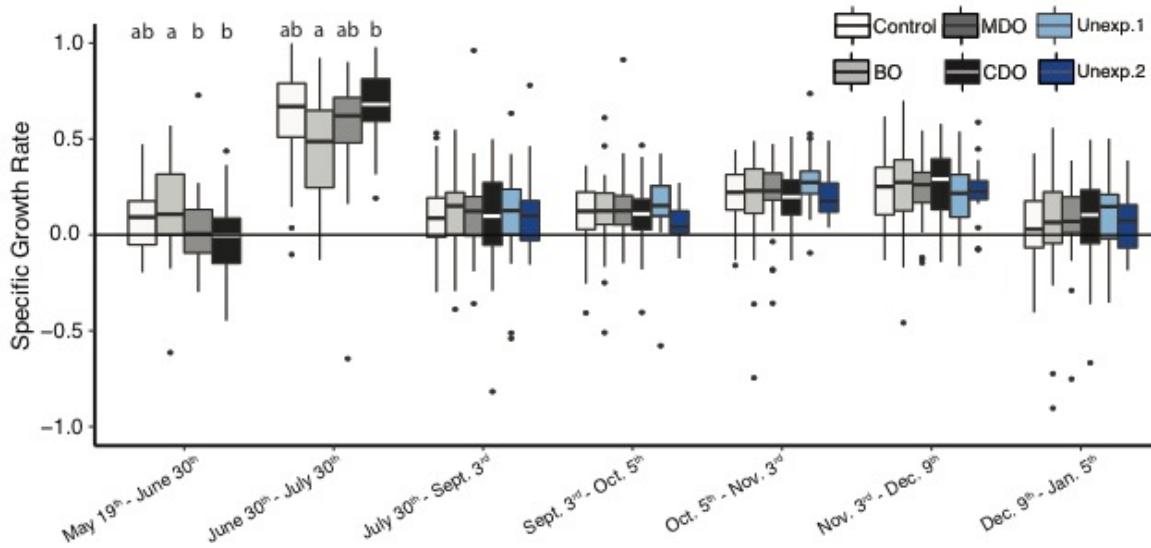
16

17



18

19 Figure 2. Cumulative mortality (% of overall mortality) of polar cod during the course of  
 20 the exposure and post exposure period (June 2015 – January 2016) for each treatment  
 21 group. No significant difference in % mortality was found between treatment groups,  
 22 control or unexposed groups.

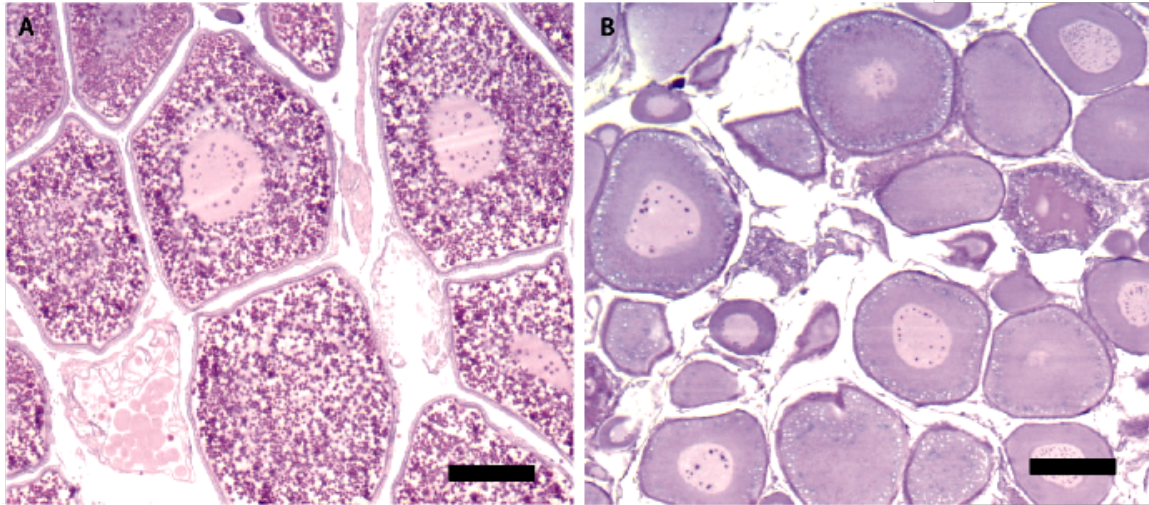


23

24

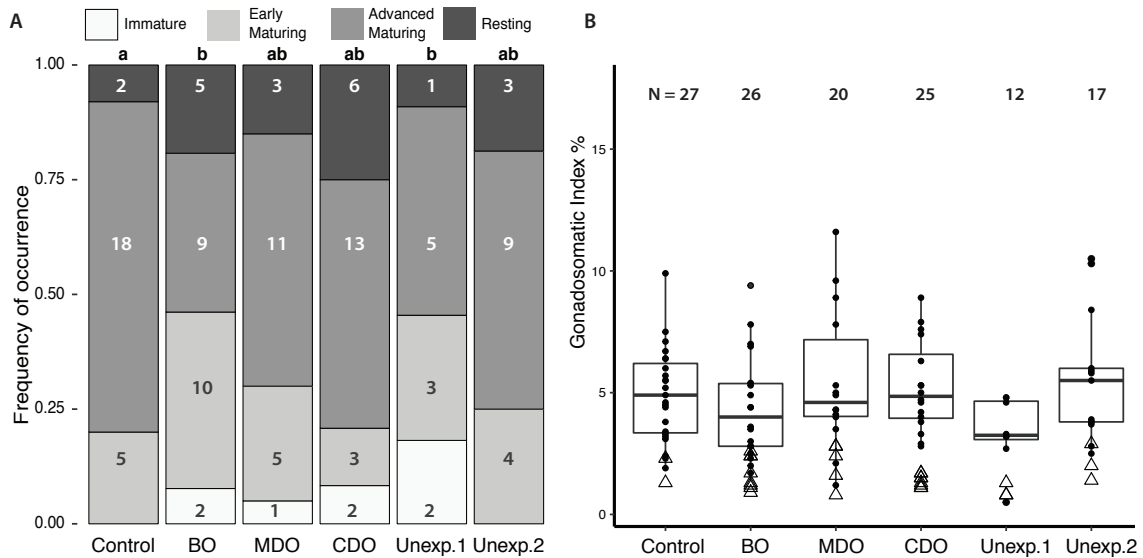
25

26 Figure 3. Specific growth rate (SGR; % change in body weight per day) of different post-  
 27 exposure time periods (n=40-49 per treatment [Unexp. n is 23-30 fish]). The box ranges  
 28 from the first (Q1) to the third quartile (Q3) of the data and represents the interquartile  
 29 range (IQR). The line across the box indicates the median while the extreme data  
 30 (outliers) outside  $Q1 - 1.5 \times IQR$  and  $Q3 + 1.5 \times IQR$  are displayed as individual points.  
 31 Limits of displayed data are only for SGR values from 1 to -1 excluding values outside  
 32 that range. Different letters indicate significant differences between treatment groups.



33

34 Figure 4. Histological representation of an (a) early maturing female with cortical alveoli  
 35 vesicles and early signs of vitellogenesis with yolk globules present in oocyte periphery;  
 36 (b) advanced maturing female with vitellogenic oocytes. Scale bare is 200 μm in both  
 37 pictures.

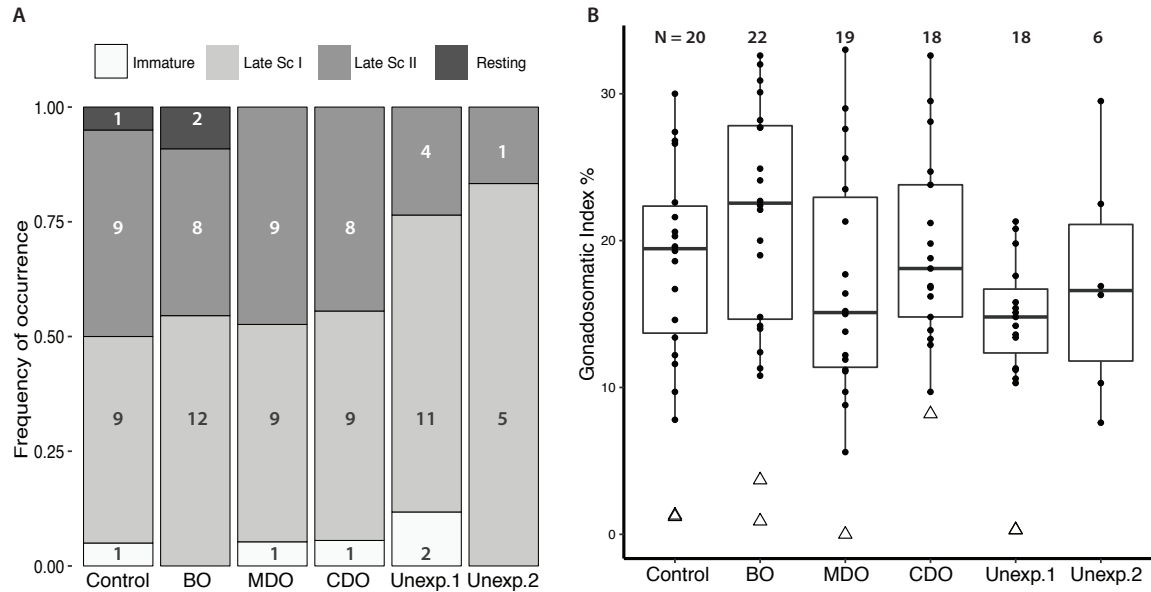


38

39

40 Figure 5. (A) Maturity stage frequency distribution of females from all treatments; (B)  
 41 boxplots of GSI of female fish in different treatment groups, maturing females are plotted  
 42 in the boxplots and immature and resting females are indicated at triangles. Different  
 43 letters above treatment groups indicate significant differences between treatment groups,  
 44 those with letters in common are not significantly different from one another. The  
 45 number in each box refers to the number of fish in that category.

46



47  
48  
49  
50  
51  
52  
53  
54

Figure 6. (A) Maturity stage frequency distribution of males from all treatments; (B) boxplot of GSI of male fish in different treatment groups, maturing males are plotted in the boxplots and immature and resting males are indicated at triangles. No significant differences were found between treatments groups. The number in each box refers to the number of fish in that category.