
Review

App Features for Type 1 Diabetes Support and Patient Empowerment: Systematic Literature Review and Benchmark Comparison

Antonio Martinez-Millana^{1*}, PhD; Elena Jaronas^{1*}, BSc Biomedical Engineering; Carlos Fernandez-Llatas^{1*}, PhD; Gunnar Hartvigsen^{2*}, Prof Dr; Vicente Traver^{1*}, PhD

¹ITACA, Universitat Politècnica de València, Valencia, Spain

²Department of Computer Science, University of Tromsø, Tromsø, Norway

* all authors contributed equally

Corresponding Author:

Antonio Martinez-Millana, PhD

ITACA

Universitat Politècnica de València

Camino de Vera s/n

Valencia, 46022

Spain

Phone: 34 963877606

Email: anmarmil@itaca.upv.es

Abstract

Background: Research in type 1 diabetes management has increased exponentially since the irruption of mobile health apps for its remote and self-management. Despite this fact, the features affect in the disease management and patient empowerment are adopted by app makers and provided to the general population remain unexplored.

Objective: To study the gap between literature and available apps for type 1 diabetes self-management and patient empowerment and to discover the features that an ideal app should provide to people with diabetes.

Methods: The methodology comprises systematic reviews in the scientific literature and app marketplaces. We included articles describing interventions that demonstrated an effect on diabetes management with particular clinical endpoints through the use of mobile technologies. The features of these apps were gathered in a taxonomy of what an ideal app should look like to then assess which of these features are available in the market.

Results: The literature search resulted in 231 matches. Of these, 55 met the inclusion criteria. A taxonomy featuring 3 levels of characteristics was designed based on 5 papers which were selected for the synthesis. Level 1 includes 10 general features (Personalization, Family support, Agenda, Data record, Insulin bolus calculator, Data management, Interaction, Tips and support, Reminders, and Rewards) Level 2 and Level 3 included features providing a descriptive detail of Level 1 features. Eighty apps matching the inclusion criteria were analyzed. None of the assessed apps fulfilled the features of the taxonomy of an ideal app. Personalization (70/80, 87.5%) and Data record (64/80, 80.0%) were the 2 top prevalent features, whereas Agenda (5/80, 6.3%) and Rewards (3/80, 3.8%) where the less predominant. The operating system was not associated with the number of features ($P=.42$, $F=.81$) nor the type of feature ($P=.20$, $\chi^2=11.7$). Apps were classified according to the number of level 1 features and sorted into quartiles. First quartile apps had a regular distribution of the ten features in the taxonomy whereas the other 3 quartiles had an irregular distribution.

Conclusions: There are significant gaps between research and the market in mobile health for type 1 diabetes management. While the literature focuses on aspects related to gamification, rewarding, and social communities, the available apps are focused on disease management aspects such as data record and appointments. Personalized and tailored empowerment features should be included in commercial apps for large-scale assessment of potential in the self-management of the disease.

(*JMIR Mhealth Uhealth* 2018;6(11):e12237) doi:[10.2196/12237](https://doi.org/10.2196/12237)

KEYWORDS

mHealth; type 1 diabetes mellitus; patient empowerment; apps; diabetes self-management

Introduction

Diabetes mellitus is a metabolic syndrome, which comprises an impaired insulin production and action [1]. Type 1 diabetes mellitus (T1DM) prevalence is rapidly rising throughout the world [2]. Supporting T1DM patients is a major health care challenge, as it involves many aspects of daily routine activities (eg, food intake, physical activity, motivation) and specific knowledge of disease mechanisms (eg, blood glucose regulation, insulin intake) [3,4].

Despite the promise of mobile health (mHealth) in the specific field of diabetes [5,6] and the explosion of diabetes-related apps in markets, T1DM management is yet undertaken on a routine care basis, in which glycemic levels (blood glucose and hemoglobin A_{1c} (HbA_{1c}) among others) and other health-related outcomes are supervised by general practitioners, endocrinologists, and nurses. This type of care has shown limited effects on empowering patients to control blood sugar levels [7].

In their review from 2011, Chomutare et al [8] compared the recommendations from evidence-based guidelines and the features of mobile apps. The evaluation of features was analyzed for 6 types of functionalities: (1) self-monitoring, (2) education, (3) alerts, (4) reminders, (5) social media, and (6) personal health records synchronization. The authors concluded that apps did not include education structural elements from the empowerment of patients other than including functionalities for routine management (record of lifestyle and measurements). The lack of core recommendations compromised the effectiveness of mobile health in diabetes clinical management [9].

Since then, several studies have been conducted to test the effectiveness of apps in reduced samples of patients. In such studies, researchers evaluate apps with different approaches and patient groups, yielding conflicting conclusions due to the different methodology of the interventions [10].

This study aimed to assess whether app manufacturers adopted the findings from mHealth evidence-based interventions in diabetes. The rationale is to mind the gap between research and the market to identify the features that are not available in commercial apps. The methodology comprises 2 systematic reviews using the PRISMA methodology, one in the scientific literature (without meta-analysis) and the other in app marketplaces. The systematic review of scientific literature is focused on interventions with apps on patients with T1DM into randomized controlled trials (RCTs). In the first stage, we built the schema of what could be an ideal diabetes app (including all the features which have shown a positive effect on diabetes management) and to then analyze the characteristics of available apps and their distance to the ideal app.

Methods

Selection Criteria

The primary objective of this study was to review scientific literature using the PRISMA methodology to enumerate evidence-based features that have demonstrated a positive effect

in the management of T1DM in RCTs. Inclusion criteria were defined as (1) a mHealth intervention on T1DM patients using an app for remote and self-management of the disease and (2) the intervention was performed in an RCT and reports on clinical outcomes (HbA_{1c}, in-range time or self-monitoring blood glucose). Exclusion criteria included (1) gray literature, (2) studies not reporting RCTs on T1DM (eg, type 2 diabetes, gestational diabetes), and (3) studies not using an app (eg, text messages, manual notes) or not describing the app's functionality. The secondary objective was to compare the evidence-based features with the characteristics of the available apps.

Recruitment Strategy

The source of the literature review were online journal databases and indexers (PubMed, Medline, Google Scholar, and Cochrane Trials). We searched a combination of keywords including type 1 diabetes mellitus, mobile health, RCTs and self-management. The complete search strategy, combination of keywords in the queries and results for PubMed are described in [Multimedia Appendix 1](#). The search included all the parts of the manuscript (title, abstract, keywords, and text). The review was conducted in July 2018, and we focused our review on recently published papers (January 2012-July 2018). Only publications in English were considered for inclusion.

Subsequently, the approach for recruiting apps was twofold. First, a web search was conducted by using keywords of 3 different groups: (1) "diabetes mellitus 1 AND apps AND (android OR iPhone) AND self-management," (2) "diabetes mellitus," and (3) "diabetes apps AND self-management." A second search was conducted in Google Play and the App Store to recruit a greater number of apps. In this case, we introduced 2 keywords: "diabetes AND management." After collecting all the available apps, the screening and selection were done in the same way as with the publications (using a PRISMA flow diagram). Subsequently, the selected apps were downloaded and tested to know which of the characteristics obtained with the systematic literature review were available in the apps.

Data from the literature review and the apps assessment was extracted by 2 of the authors (AMM and EJP) using a structured data form. For the literature review, we extracted data related to the study (year of publication, sample size, the age of participants, methodology, intervention, clinical endpoints, features, usability, and satisfaction). Studies were assessed using the Cochrane Collaboration's tool to assess the risk of bias of included (selection, reporting, performance, and attrition) [11]. For the app review, we extracted the type of features each app offered, the operative system, language, icon, and link.

Statistical Analysis

A descriptive analysis of the features in the apps was done before association analytics. Association of the type of features and the type of operative system was evaluated with a two-way analysis of variance, in which we assessed the *P* value and the *F* statistic. Association of the number of features and the operative system was assessed using Kruskal-Wallis tests at 95% CI, in which we calculated the *P* value and the chi-square value. A value of *P* < .05 was considered as significant. The

Feature Factor (FF) was defined as the polynomial formula (Equation 1) $FF = N_{L1}^3 + N_{L2}^2 + N_{L3}$ where N_{Lx} is the number of features in level 1, level 2, and level 3 respectively. We used MATLAB 2017Ra framework under Academic License to conduct the statistical analysis.

Results

Systematic Literature Review of Features

Figure 1 shows the cascade flow of search process for the literature review. A total of 449 scientific publications were found in the selected search engines with the chosen keywords and the date constraints. After excluding 216 duplicated entries, we obtained a total of 233 original publications. In the second screening of these 233 articles, 176 were not related to the objective of this study and were eliminated. A big part of the

remaining 51 articles was not matching the inclusion criteria. Ten of the 51 (19.6%) did not refer to T1DM, 5/51 (9.8%) were not related to mHealth, 11/51 (21.6%) were reviews, 17/51 (33.3%) were not in the scope of our study, 3/51 (5.9%) did not allow full-text publication accessibility, and 5/51 (9.8%) did not provide relevant data for the synthesis. Finally, once read and analyzed, 6/57 (11.8%) scientific publications were included for the synthesis [12-17].

These 6 studies reported on the results evaluating the benefits of apps in the management of T1DM (Table 1). These studies consisted of 266 participants (as we only considered intervention groups) in RCTs and lasted from 3 to 12 months. Only studies with a clear clinical endpoint were considered (eg, HbA_{1c} improvement, self-monitoring blood glucose (SMBG) daily rate).

Figure 1. Selection of the literature for evidence-based features of mobile apps for type 1 diabetes management and empowerment.

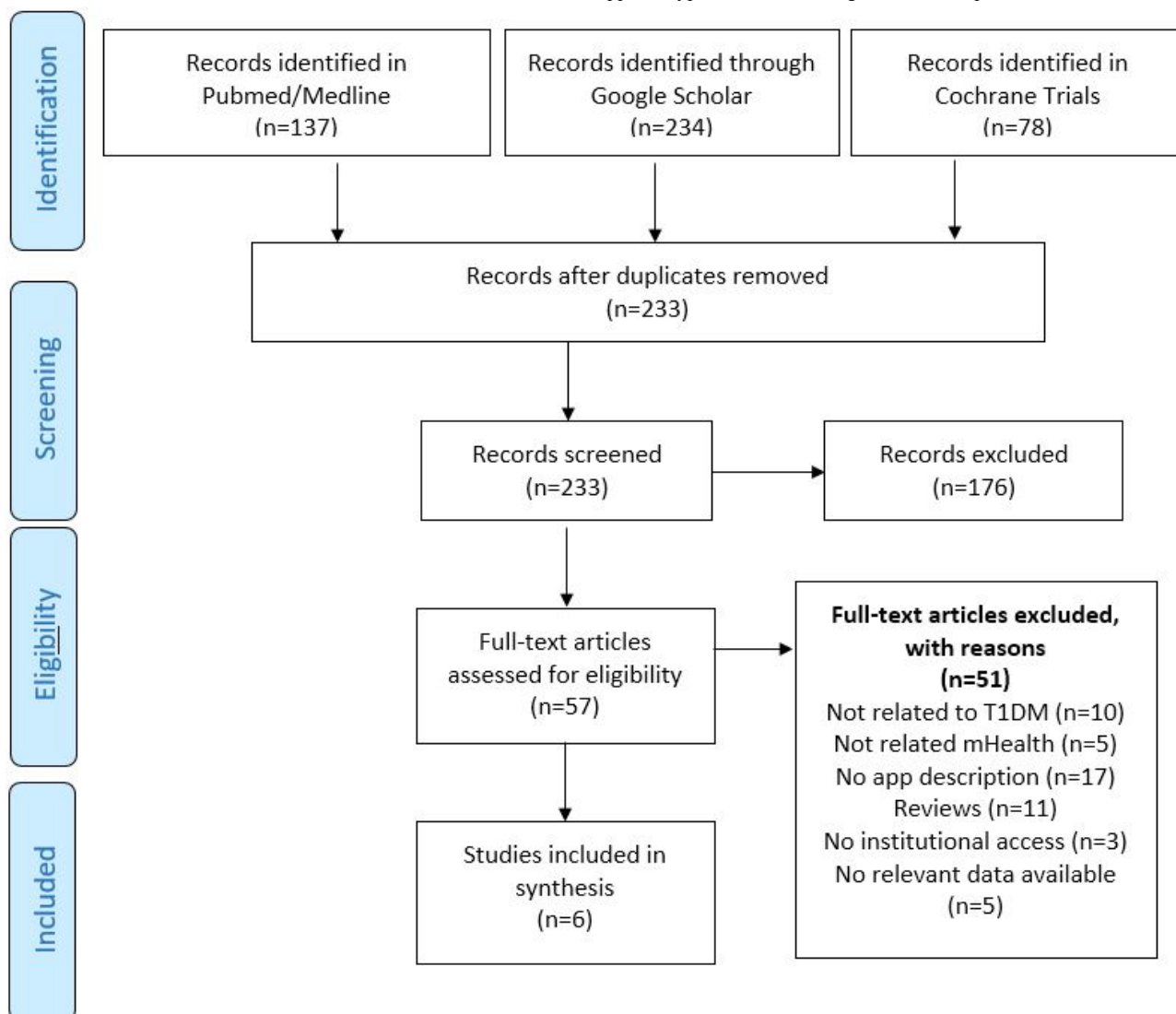


Table 1. Characteristics of the studies evaluating mobile apps for type 1 diabetes mellitus management and empowerment.

Characteristics	Castensøe-Seidenfaden [12]	Cafazzo [13]	Goyal [14]	Kirwan [15]	Clemens [16]	Ryan [17]
Publication year	2018	2012	2017	2013	2017	2017
Intervention, n	76	20	46	25	81	18
Age (years), mean (SD)	17.6 (2.6)	14.9 (1.3)	14.1 (1.7)	35.9 (10.6)	14.0 (10.4-15.9) ^a	40 (13.9)
Time ^b (years), mean (SD)	8.0 (4.5)	NS ^c	7.1 (3.2)	19.7 (9.6)	4.9 (2.7-7.5) ^a	27.3 (14.9)
Duration (months)	12	3	12	6	3.6	4
Intervention type	Usual care App	App	Usual care App	App Feedback	Retrospective analysis	Usual care App
App name	Young with Diabetes	Bant	Bant	Glucose Buddy	NS	NS
HbA _{1c} ^d outcome	No significant change	No significant change	Decrease by 0.58% ($P=0.02$)	Decrease in mean (SD) from 9.08% (1.18%) to 7.8% (0.75%)	No significant change	Decrease in median (9.1% to 7.8%)
SMBG ^e outcome	—	Increased mean daily frequency (2.4 to 3.6, $P=0.006$, $n=12$)	—	No significant change	Increased 2.3 times	—
App perceived usefulness ^f	Chat Room (among young people)	Reminders, blood glucose regulation, insulin and food regulation, emergency readiness, exercise	Trending feature, logbook, and home menu (statistics)	NA ^g ; texting extensively used	Data synchronization	Bolus calculator and glucose control. Badges used by 17%
User satisfaction	>80% would recommend	88% would continue to use	76% “satisfied/very satisfied” 96% would continue using app	NA	NA	NA

^aMedian and interquartile range.

^bSince diagnosis.

^cNS: not specified.

^dHbA_{1c}: hemoglobin A_{1c}.

^eSMBG: self-monitoring blood glucose.

^fEither a 5-point or 10-point Likert scale was used to score.

^gNA: not assessed.

Overall, the included trials adequately achieved a low level of risk of bias (Table 2). Three of the studies did not report on random sequence generation, and 2 did not adequately report concealing the allocation sequence to determine if the group could have been foreseen. Only 2 trials blinded the outcome assessment. Besides, all trials except 1 adequately described data completeness (including exclusion and drops out) and did not perform selective outcome description.

The majority of these studies assessed the features of the app which had a higher perceived usefulness or a good adoption among study subjects. Castensøe-Seidenfaden et al [12] found the Chat Room as the most rated feature, a virtual space for user

communication in which users posted comments about alcohol and sex. Cafazzo et al [13] report the user-centered design and evaluation in 12 subjects of the Bant app; a mobile app that's focused on the simple and automated transfer of glucometer readings, a social community and rewards for healthy behavior adherence (average 8 rewards per user in a three-month trial). An updated version of the Bant app was tested by Goyal et al [14] in a 12-months trial involving 46 subjects, pointing out the trends, logbook, and homepage as the preferred features of the app. Kirwan et al [15] examined the effectiveness of Glucose Buddy, a free app combined with texting from a certified diabetes educator in 25 subjects.

Table 2. Cochrane Collaboration's tool risk-of-bias assessment for the clinical outcomes (hemoglobin A_{1c} and self-monitoring blood glucose changes) of the included study papers.

	Castensøe-Seidenfaden [12]	Cafazzo [13]	Goyal [14]	Kirwan [15]	Clemens [16]	Ryan [17]
Random sequence generation	Low	High	Low	Low	High	High
Allocation concealment	Low	High	Low	Low	High	Low
Blinding of participants and personnel	N/A ^a	N/A	N/A	N/A	N/A	N/A
Blinding of outcome assessment	Low	High	High	Low	High	Unclear
Incomplete outcome data	Low	Low	Low	High	Low	Low
Selective reporting	Low	Low	Low	High	Low	Low
Other bias	Low	Unclear	Low	Unclear	Unclear	Low

^aN/A: not applicable (both patient and doctors know the group they are allocated).

Clemens and Staggs [16] reported a retrospective study on 81 youth T1DM patients who used a mobile app connected to a glucose meter, showing that data synchronizations were associated with an increased rate of SMBG but not with HbA_{1c} or mean glucose values. Beyond data synchronization, no more app features were provided by authors in this paper. Finally, Ryan et al [17] developed and evaluated Intelligent Diabetes Management, an app for insulin bolus calculation and an electronic diabetes diary in clinical visits. The app included a "badge" feature for motivational accolades based on the reported measurements. The 18 subjects, who completed the study, rated the insulin calculator with 8 in a 10-point Likert scale and only 17% of subjects used the "badges" feature regularly.

Three of these studies evaluated the user satisfaction in terms of willingness to use the app after the trial and willingness to recommend its use to peers. Each showed a high percentage of subjects willing to continue using the app and willing to recommend the app to peers [12-14]. In our study, we analyzed the features available in the mobile apps (rated or not) and gathered in a hierarchical map of functionalities.

Features Taxonomy of an Ideal App

The qualitative study of the apps used in the studies allowed us to extract the characteristics of the apps that users rated as key and researchers considered of value. These features were sorted into functional areas beyond the traditional 4 clinical areas of diabetes management taxonomy (glycemic control, carbohydrate intake, insulin and exercise) [18]. The new proposed taxonomy (Figure 2) had 3 hierarchical levels, the first of which had 10 areas: (1) Personalization, (2) Family support, (3) Agenda, (4) Data record, (5) Insulin bolus calculation, (6) Data management, (7) Interaction, (8) Tips and support, (9) Reminders, and (10) Rewards. In this area, we included all the functions and settings that users can adjust to customize the app interface, the behavior, and calculations (if any). The basic feature was building a user profile for the social community of app users, with the capability of adding a picture or avatar. The second feature in Personalization was the possibility of configuring the blood glucose diary (or record), adjusting personalized thresholds for supporting the patient, and product recommendation. The third feature was the configuration of the user mood. The fourth feature was the self-adjustment of goals of any type (glucose goals, carbs intake, weight loss). The fifth feature was setting

up the type of insulin, the brand, and the intake method. The sixth feature was configuring tailored advices (eg, topic selection, when to show the advice). The seventh feature was the personalization of the measurements reporting, instead of having a default form for data introduction, for all the relevant variables (Figure 2). The last feature of personalization was the customization of physical activity reporting.

Family support was a feature in which relatives can perform a follow-up of the data introduced by the patient in which we have identified read access and read-and-write access. This feature also contains literature support for relatives in the management of T1DM through web links and books. The Agenda feature was a common factor in the apps analyzed in the review, and it was mainly devoted for scheduling medical and personal appointments. Another recurrent feature was the storage of measurements and reports related to food intake, insulin intake, and physical activity, which are under the Data record feature. In this feature, we made a distinction between the apps that had manual data entry (eg, forms, pictures, voice recognition, avatar) and the automatic entry of data using wireless sensors, mobile phone sensors (such as an accelerometer for physical activity) and smartwatches and wearables. The last feature (right side in Figure 2) was the Insulin bolus calculator, which provided calculations for exogenous insulin injection for fast action (bolus) or slow action (basal), and for the insulin pump device (bolus and basal).

The Data management feature involved the capability of the app of exporting, storing, and analyzing the data collected in the app. In the review, one of the top-rated features was the graphical representation of measurements and the calculation of statistics based on these measurements. The second feature in the right side of Figure 2 refers to the ability of the app to interact with other subjects beyond the T1DM user (clinicians, parents, and other app users). This interaction was generic and involves social communities, participation in forums, and data sharing. All the analyzed apps had a feature for Tips and support, which involved a user manual of the app. Some of them also included generic information related to diet and physical activity. Only 1 had online 24/7 medical support and emergency management. The Reminders feature enabled users to set up alerts for measuring and recording blood glucose tests, insulin intakes, insulin and glucometer strip purchasing, and attending medical or personal appointments scheduled in the Agenda.

Finally, the Reward feature contained the motivation mechanisms that the app implements for control and therapy adherence. Rewarding strategies in the review were related for providing credit in virtual markets, premium access to the app (rewards for enhanced functionalities) and other types of credit for online stores (Amazon, eBay vouchers).

Systematic Review of Commercial Diabetes Management Apps

We evaluated the available apps through an online search, the App Store (Apple) and Google Play (Android) for diabetes management and support. Following the PRISMA methodology approach (Figure 3), we obtained 93 single apps devoted to T1DM (20/93 (21.5%) from the online search and 73/93 (78.5%) from the previously mentioned app markets). Five of the 93 apps (5.4%) were excluded because the links for downloading the software were unavailable. Of the remainder, 8/87 (91.9%)

apps were excluded from the detailed analysis: 2/87 (2.3%) because they were not tailored to T1DM, 2/87 (2.3%) because they focused on healthcare professionals, 2/87 (2.3%) because the access was secured with a password (corporate use), 1/87 (1.1%) because it was not free and 1 (1.1%) because it was a copy of another app with different name and icon. Finally, 80 apps (Figure 4) were assessed to discover the extent to which these apps fulfilled the feature schema of an ideal app taxonomy.

Android and iOS apps were tested during a month since many apps needed control over a longer period to provide data (graphics, statistics) to the user. A mHealth expert analyzed the apps and collected all the features which matched the taxonomy of the ideal diabetes management app. Features were flagged with a Boolean value depending on whether the app provided the analyzed feature. Occasionally, the mHealth expert was provided with clarification to ensure that the analysis was more precise.

Figure 2. Taxonomy of the features of an ideal app according to the evidence-based effectiveness of mobile health in diabetes support and empowerment.

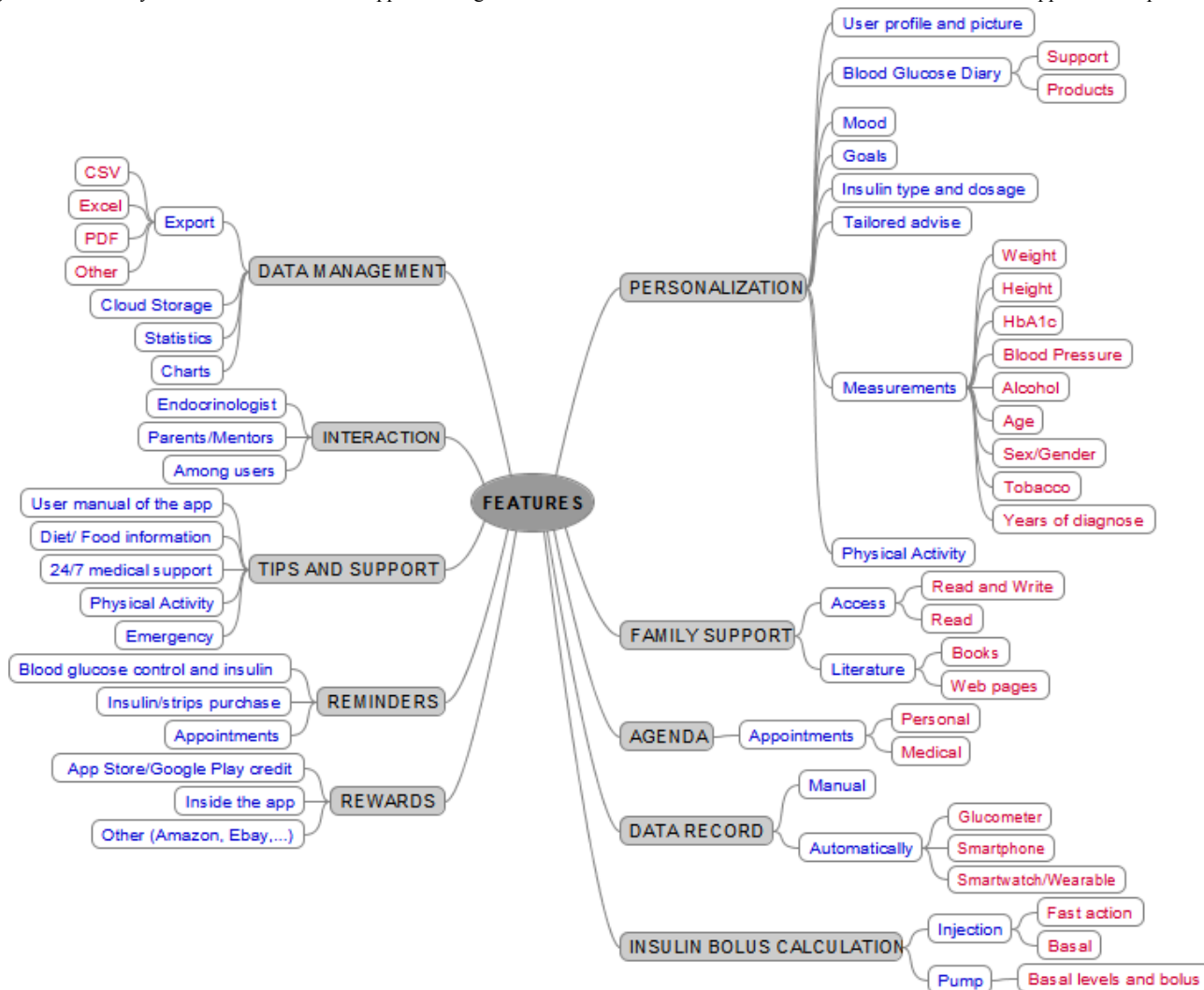


Figure 3. Selection of the available apps for type 1 diabetes management and empowerment.

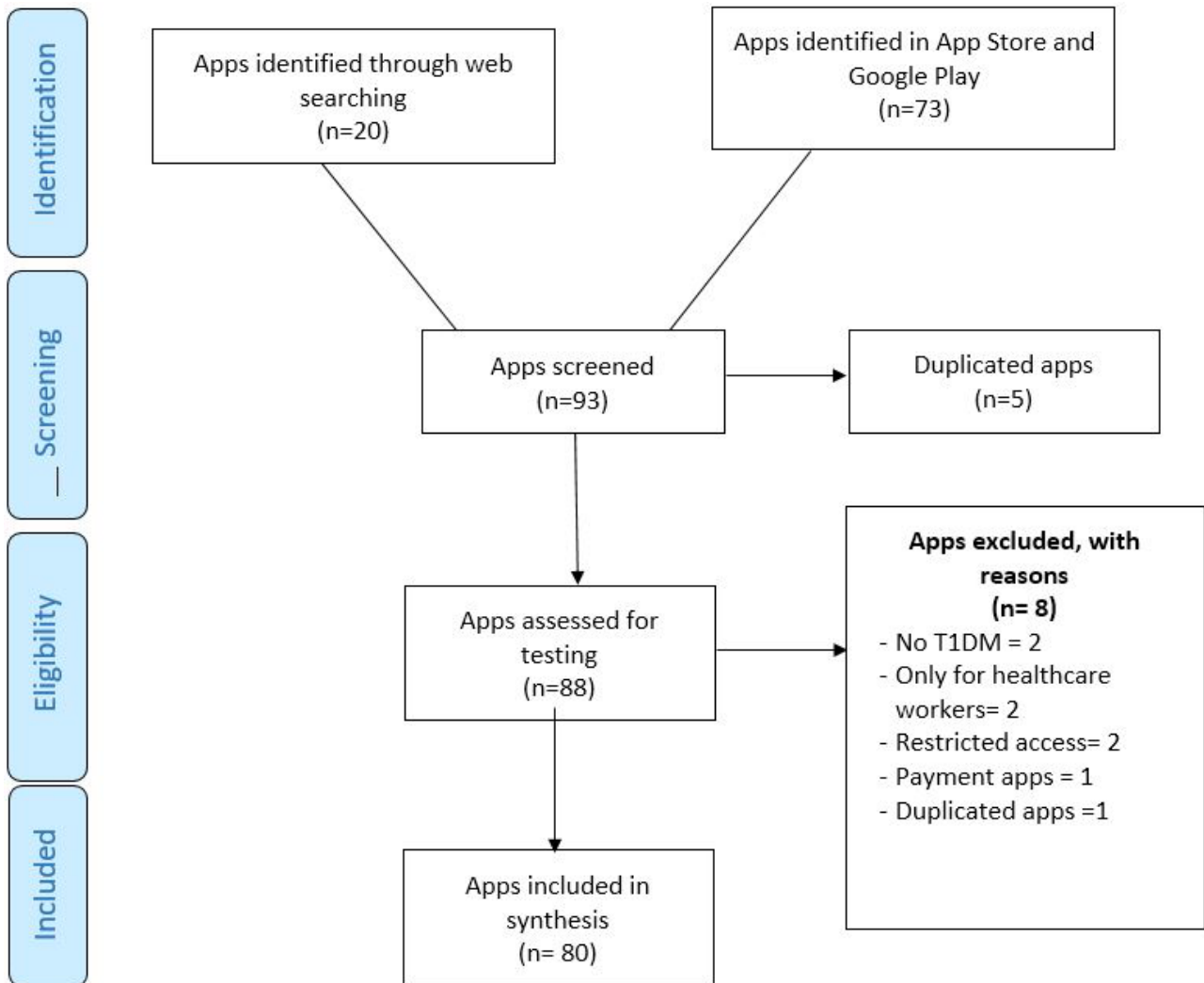
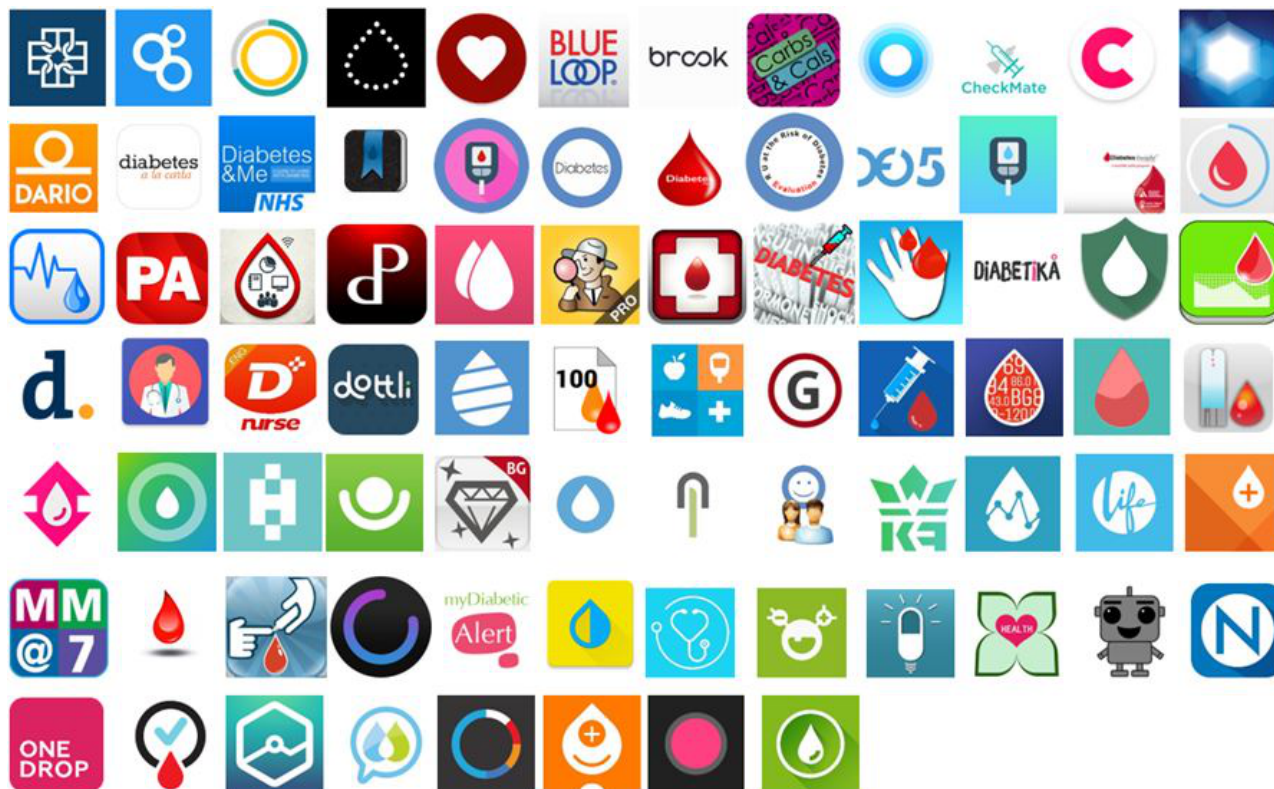


Figure 4. Apps included in the analysis. From top-down left-right: Balansio, Bant, BeatO, Beyond type 1 diabetes, Blood glucose tracker, BlueLoop, Brook, Carbs & Cals, Center health, Checkmate diabetes, Chron, Contour diabetes, Dario, Diabetes a la carta, Diabetes & Me, Diabetes connect, Diabetes diary, Diabetes diet and management, Diabetes digest, Diabetes evaluation, Diabetes experience day, Diabetes ID, Diabetes insight, Diabetes kit blood, Diabetes metrics, Diabetes PA, Diabetes pal, Diabetes parent, Diabetes passport, Diabetes pilot pro, Diabetes plus, Diabetes treatment, Diabetes vue, Diabetika, Diaguard, Diario de sangre, Diasend, DMI from zero to hero, Dnurse, Dottli, Dr. Diabetes, Easy diabetes, Glooko, Glucool diabetes, Glucosa compañero, Glucose buddy, Glucose wiz, Uright, Glucosio, GluQUO, Health2sync, Helparound, iFora, Inrange, Insulclock, Kids and teens diabetes, Kingfit, La diabetes M, Life in control, MedM diabetes, Meet me, Mi glucemia, Monitor de glucosa, Mumoactive, My diabetic alert, Nagbot, Neptun, One drop, Ontrack diabetes, PredictBGL, Social diabetes, SOS diabetes, Sugar sense, Sugarmate, Track3lite.



The Gap Between Literature and Apps in Diabetes Management

None from the 80 analyzed apps fulfilled the criteria of the taxonomy of an ideal app. Only BlueLoop had 9 out of the 10 ideal features in level 1. Table 3 describes the distribution of features amongst the analyzed apps. Sixteen of the 80 (19.7%) apps were only for Android, 15/80 (18.5%) only for iOS, and 50/80 (62.7%) for both operative systems. The mean for the number of level 1 features in the analyzed apps was 4.6 (SD 1.7) with interquartile range 3-6 and range 2-9. Based on the

taxonomy of an ideal app, the predominant category of features was Personalization (70/80, 87.5%), followed by Data record (64/80, 80.0%), Tips and support and Data management (60/80, 75.0%). Reminders were featured in less than a half (33/80, 40.7%), Family support in 37.5% (30/80), and Agenda in 36.3% (29/80). Less than a third (23/80, 28.7%) featured Interaction and 25.0% (20/80) had Insulin bolus calculation. The least predominant feature was Rewards (3/80, 3.8%). The number of level 1 features was not associated with the operative system ($P=.42$, $F=.81$). In the same way, the level 1 type of feature was not associated with the operative system ($P=.20$, $X^2_{29}=11.7$).

Table 3. Feature frequency in the reviewed diabetes management apps for the 3 hierarchy levels.

Level hierarchy	Apps containing the feature, n (%)
Personalization (n=70)	70 (100.0)
User profile and picture	40 (57.1)
Blood glucose diary	64 (91.4)
Mood	14 (20.0)
Goals	33 (47.1)
Insulin type and dosage	21 (30.0)
Tailored advice	8 (11.4)
Measurements	24 (34.3)
Weight	24 (34.3)
Height	14 (20.0)
Hemoglobin A _{1c}	17 (24.3)
Blood pressure	15 (21.4)
Alcohol	1 (0.1)
Age	6 (8.6)
Gender	14 (0.2)
Tobacco	1 (0.1)
Years with type 1 diabetes mellitus	12 (17.1)
Physical activity	35 (50.0)
Family support (n=30)	30 (100.0)
Access	30 (100.0)
Read and write	8 (26.7)
Read	22 (73.3)
Literature	7 (23.3)
Books	12 (40.0)
Web pages	7 (23.3)
Agenda (n=29)	29 (100.0)
Appointments	29 (100.0)
Data record (n=64)	64 (100.0)
Manual	62 (96.9)
Automatically	30 (46.9)
Glucometer	27 (42.2)
Mobile phone	17 (26.6)
Smartwatch/wearable	1 (1.6)
Insulin bolus calculation (n=20)	20 (100.0)
Injection	17 (85.0)
Bolus	9 (45.0)
Pump	7 (35.0)
Basal	9 (45.0)
Data management (n=60)	60 (100.0)
Export	34 (56.7)
Comma-separated values	16 (26.7)
Excel	6 (10.0)

Level hierarchy	Apps containing the feature, n (%)
PDF	10 (16.7)
Other	20 (33.3)
Cloud storage	28 (46.7)
Statistics	18 (30.0)
Charts	51 (85.0)
Interaction (n=23)	23 (100.0)
Endocrinologists	16 (69.6)
Parents/mentors	14 (60.9)
Among users	9 (39.1)
Tips and support (n=60)	60 (100.0)
User manual of the app	46 (76.7)
Diet/food information	28 (46.7)
24/7 medical support	7 (11.7)
Emergency	11 (18.3)
Reminders (n=33)	33 (100.0)
Blood glucose control and insulin	33 (100.0)
Insulin/strips purchase	28 (84.8)
Appointments	29 (87.9)
Rewards (n=3)	3 (100.0)
App Store/Google Play credit	0 (0.0)
Inside the app	3 (100.0)
Other (Amazon, eBay, etc.)	1 (33.3)

Level 2 features in Personalization were dominated by the Blood glucose diary (64/70, 91.4%), whereas Tailored advice was only present in 11.4% (8/70). If we look into level 3 Measurements in Personalization, only 0.1% (1/70) of the apps included Tobacco and Alcohol, and 17.1% (12/70) included a field for Years of diagnosis. With regards to Family support, 100.0% (30/30) featured Read access, and 26.7% (8/30) included Writing access to relatives.

Fifty-one of 60 apps (85.0%) featuring Data management had the possibility of drawing charts with the stored measurements, and more than a half (34/60, 56.7%), offered the possibility of data exportation in several formats. Nearly a half (28/60, 46.7%) offered the possibility of storing data in the Cloud, and only 30.0% (18/60) had the option of calculating statistics.

Level 2 features of Tips and support showed that not all the apps have a user manual (46/60, 76.7%), less than a half (28/60, 46.7%) provided Diet/food information, only 11.67% (7/60) had 24/7 Medical support specific for diabetes, and 18.3% (11/60) had Emergency support.

All the Reminders (33/33, 100%) were for blood glucose and insulin schedule. A majority were for purchasing fungibles

(28/33, 84.8%) and Appointments (29/33, 87.9%). Three of 3 (100%) provided Rewards inside the app, and only 1/3 (33.3%) gave Rewards in online markets.

Figure 5 shows the relationship between level 1 features and the FF as defined in Equation 1. The size and color of the point indicates the level of feature completeness according to the ideal app taxonomy. The yellow point refers to the app which had 9 of the 10 level 1 features, which is surpassed by 2 apps with 8 level 1 features, but which also implement more level 2 features.

Apps were classified according to the number of level 1 features they offered. Figure 6 shows the distribution of these features in a quartile classification of the number of level 1 features variable. First quartile (>75% in Figure 6) shows a regular distribution of the features, except to Agenda and Rewards. Second and third quartile apps (25%-75% in Figure 6) have a heterogeneous distribution of features, with an increased presence of Reminders, Personalization and Data management, and a lower presence of Insulin calculation, Agenda, Family support, and Rewards. First quartile (<25% in Figure 6) shows fewer features (4 versus 10 in the other quartiles), which are dominated by Family support and Tips and support features, completed by Data record and Personalization.

Figure 5. The relationship among the number of level 1 features and the Feature Factor.

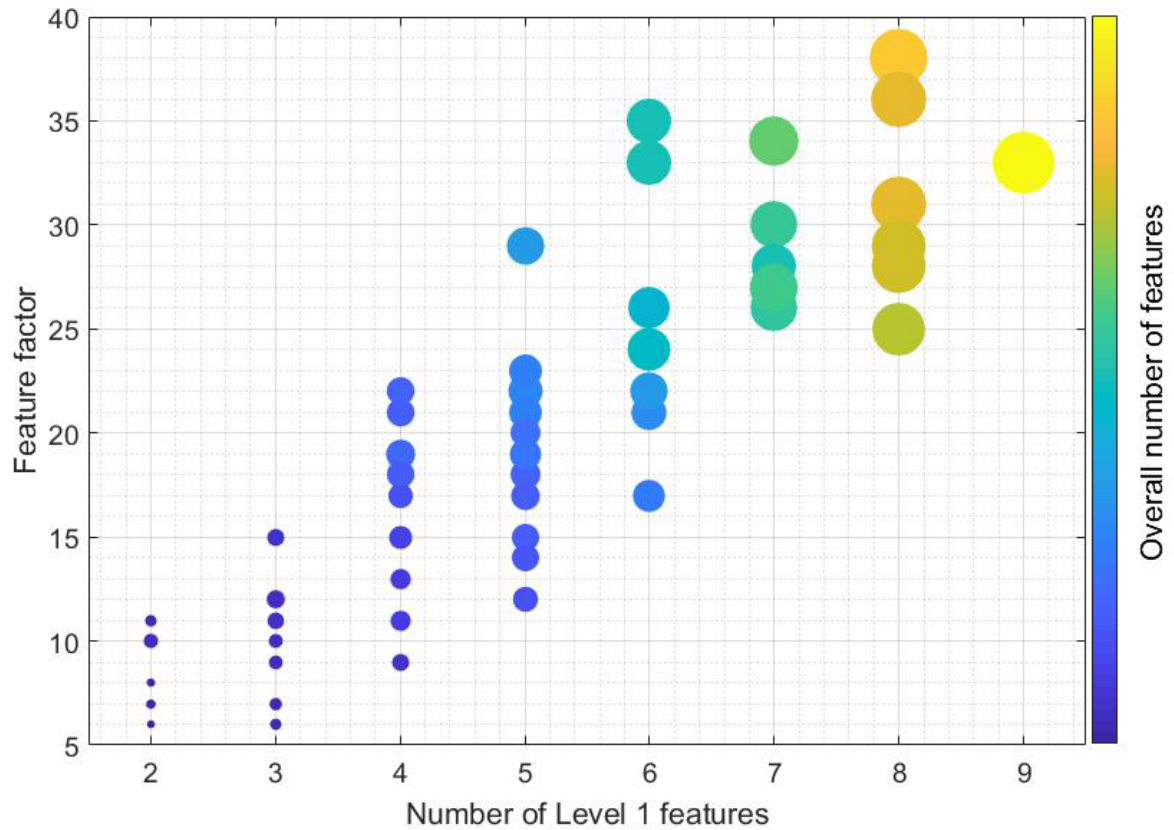
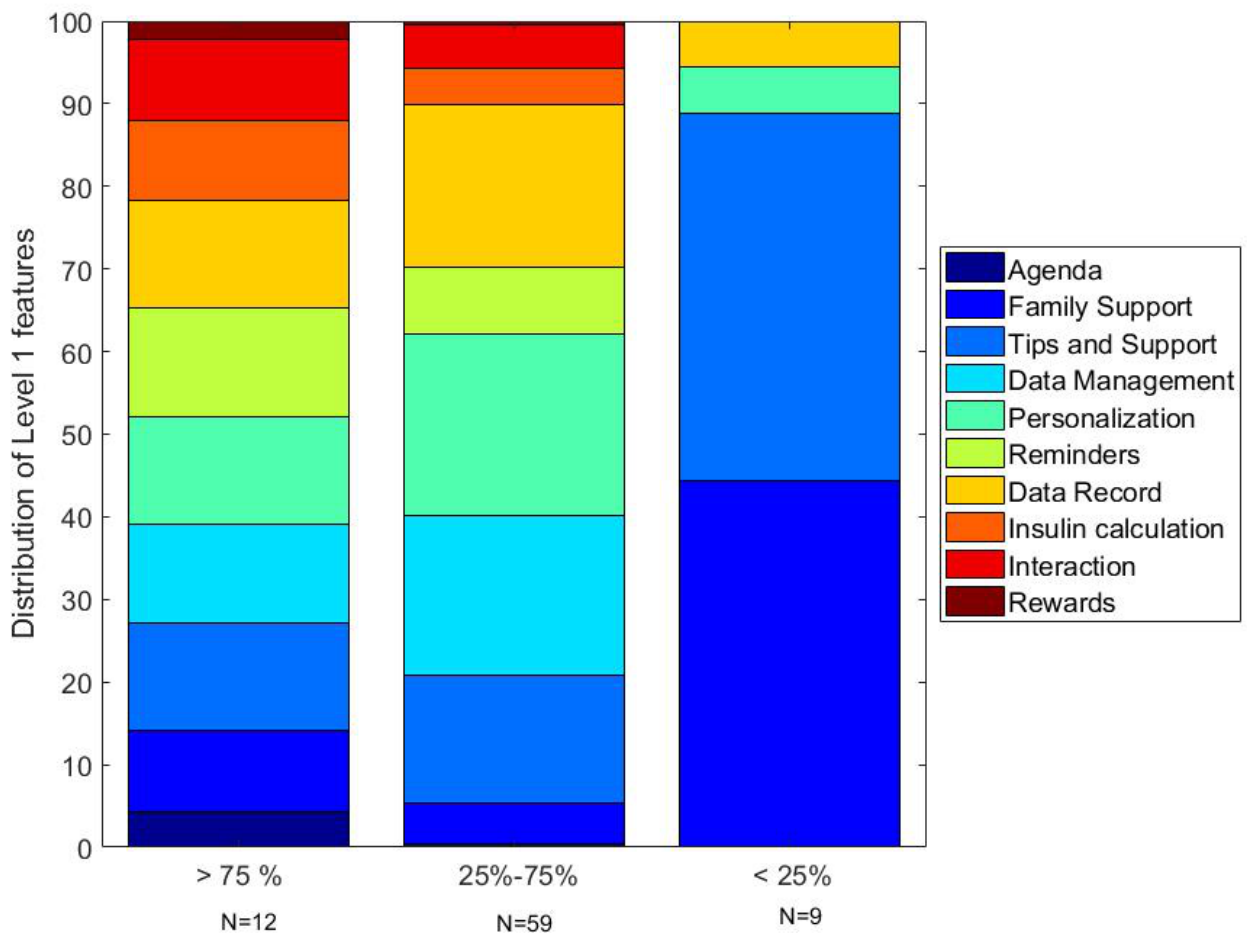


Figure 6. Distribution of level 1 features classified according to the number of level 1 features in the apps divided into quartiles.



Discussion

Principal Results

We conducted a systematic review to discover the features of the apps that had shown an effect in T1DM management. We found a big gap between research and market in the apps for supporting and empowering T1DM patients. While research is currently testing the effectiveness of mHealth in the improvement of clinical outcomes related to T1DM and therapy adherence, the characteristics of such apps are heterogeneous and not consistently justified. The systematic search discovered 6 studies consisting of mHealth interventions on 266 participants with a study duration ranging from 3 to 12 months. Studies described the app and assessed the user perceived usefulness of the app characteristics. Three of the 6 (50%) studies also reported on user satisfaction. Features of the apps were categorized and merged into a taxonomy of what would be an ideal app for T1DM management and patient empowerment (Figure 2).

The newly proposed taxonomy featured 3 hierarchical levels, the first of which has 10 areas. Subsequent level 2 and level 3 features are embedded into level 1 features, enabling us to detail what type of feature is offered to the app user (eg, Personalization: setting up a user profile). Regarding the interaction of patients and health care professionals, we discovered apps including contact to and support from endocrinologists and diabetes educators (Figure 2). We think that a general practitioner should also be considered as a reference contact point for some cases. Moreover, information about current trends might also be of interest (eg, blood glucose is increasing or decreasing) for patients having a continuous blood glucose monitoring system, or by interpolating self-reported measurements.

Moreover, this study explored systematically the features that are present in apps available at zero cost for users on the internet and mobile apps markets. Following the PRISMA approach, we found 80 apps which were analyzed in detail for 30 days. None of the assessed apps fulfilled the features of the taxonomy of an ideal app, but 1 featured 9 characteristics (BlueLoop). Personalization (70/80, 87.5%) and Data record (64/80, 80.0%) were the 2 top prevalent features, whereas Rewards (3/80, 3.8%) was the less predominant. We did not find an association on the number of features ($P=.42$, $F=.81$) nor the type of feature ($P=.20$, $X^2_{29}=11.7$) with the app operative system. Level 2 features were highly heterogeneous, but we highlight the Blood glucose diary featured in 91.4% (64/70) of apps and the low rate of Tailored advice only present in 11.4% (8/70). Level 2 features of Tips and support showed that not all the apps included a user manual (46/60, 76.7%), less than a half (28/60, 46.7%) provided Diet/food information. Only 11.67% (7/60) offered 24/7 medical support specific for diabetes, and 18.3% (11/60) offered Emergency support. To our knowledge, this is the first comprehensive taxonomy specific definition of features and the first review exploring the availability of such features in commercial apps for mHealth interventions in T1DM.

In a secondary analysis apps were classified according to the number of level 1 features and sorted into quartiles (Figure 5).

First quartile apps had a regular distribution of the 10 features in the taxonomy, expect Agenda and Rewards. Second and third quartile did not follow this distribution, having a greater frequency of Data record, Personalization, and Data management. The fourth quartile featured Family support and Tips and support.

Comparison with Prior Work

Patient empowerment is essential for T1DM management and control [19]. Interventions for T1DM with mobile applications are mainly used for managing measurements, reminders and charting data, instead of promoting the self-management of the disease with a comprehensive strategy of skills development. Gamification and social communities have been observed as a key factor for empowering patients, though in our review we confirm these to features as a testimonial.

This research stresses the fact that there is a need to consider the key features to be included in an app for T1DM. This consideration is straightforward related to the ultimate objective of the app. Is it for recording and storing measurements? Is it for managing other aspects as the disposables or the appointments? Is it targeted to empower the user? Is it to build a social community? Goyal and colleagues argued that the design of an app for T1DM young patients had to consider 3 factors: (1) relationship to technology, (2) how this relationship might make a difference to users, and (3) considering when it might not be a suitable mechanism to use [14]. There is a ring to rule them all, but there should not be a T1DM app to rule them all. Patients and relatives will experience an intense evolution since disease onset until blood glucose control. This means that there can be an app for each type of T1DM patient depending on their momentum with the disease and their own context.

The taxonomy of features was designed based on previous clinical interventions [12-17] which have shown a clinical effect on the management of diabetes with mHealth. However, more evidence is needed to correlate specific improvements with the types of features. Many studies revealed the clinical effectiveness of diabetes management based on the definition of the American Association of Diabetes Educators 7 Self-Care Behaviors (AADE7) [20]. The AADE7 defines 7 key areas for conducting and effective management of diabetes: (1) monitoring, (2) healthy eating, (3) taking medication, (4) being active, (5) problem solving, (6) healthy coping, and (7) reducing risks. Recently Ye et al [21] reviewed 137 apps for diabetes management based on AADE7 guidelines, concluding that many of the apps were designed for supporting healthy behaviors and a few were for supporting patients at problem-solving, risk reduction, and facing health from a holistic perspective. Our findings support that the current apps are suited for basic management instead of promoting the long-term empowerment of patients.

In 2017, Holtz et al [22] reported the development of a T1DM app with a patient-centered approach. One of the desirable app features that the adolescents mentioned in the evaluation of this study was to be part of a community. Although researchers and clinicians are focusing on intervention based on social networks and mobile apps [23], we do not see such progress when these

apps are used for improving clinical endpoints nor in the apps already available to users. Gamification and rewarding are the least prevalent of the features, a reality that should encourage researchers to design new gamification strategies to engage T1DM patients on the importance of self-management.

Gamification and coaching techniques are also a promising feature of mobile health apps for diabetes management. Sannino et al [24] introduced the concept of a constant follow-up of the patient's performance along with continuous feedback and reward system according to the user behavior and disease control. Although this app was only tested in a pilot set up for assessing usability and satisfaction, some of the features could be introduced in future RCTs to discern which gamification approaches fit better for each type of T1DM user.

The review of apps allowed us to conclude that level 1 features in apps have a balanced distribution (Figure 6). However, rather than focusing on the number of features in an app, research should investigate which of the features contribute to achieving goals effectively. A better understanding of the disease mechanism and treatment effects lead to an improvement of health outcomes [25]. This suggests that small changes in patient environments can have more significant effects on behavior and can be utilized in the self-management of diseases. The mHealth solutions are a promising alternative enabling context-awareness and personalization, but these solutions must be designed integrating evidence-based behavioral change theoretical foundations to be effective [26].

In this study, we have discovered Data record and Personalization as the most prevalent features in mHealth diabetes apps. This finding should be further explored to know how many of these apps that also offer a dashboard for professional management. A recent study has discovered a decrease of the consultation time in type 2 diabetes management by using artificial intelligence and predictive modeling [27,28], and moreover, a review has proved these methods are being progressively established as suitable for use in daily clinical practice [29]. Future research should tap into the application of these methods for supporting both T1DM patients and healthcare

professionals on the follow-up and control of this complex disease.

Finally, for the main purpose of disease management apps, rather than investigating the number of app features, we should investigate what kind of features could achieve the goal effectively. In our study, we were not able to distinguish which feature (or combination of features) was helping patients to achieve their goals. Acceptability and usability studies may help to identify the features that have a higher impact on the self-management of the disease, but further research should be conducted to critically identify the sets of features valuable for patients.

Limitations

A limitation of this study is the set of papers and apps selected for the literature review and the app review. The authors may have omitted significant contributions for both searches due to the incompleteness of the query commands and mismatch in the searches. We have focused our research on apps tested in RCTs with significant clinical end-points. Authors are aware of the relevant research done in the past and conducted in the present in the design of T1DM apps, which do not involve clinical endpoints nor RCTs, which may also contribute to the taxonomy of an ideal app defined in this paper. Another limitation is that the graphical user interface (GUI) of the apps are not evaluated or studied. If the GUI is not appropriate, many features might be less accessible and thus less used.

Conclusions

This study assessed the existing gap between research and market in mobile health apps for the management of T1DM and the empowerment of patients. The mHealth has potential to support the management of T1DM, to catalyze the information exchange between patients, parents, and caregivers, and to empower and educate patients in the management of T1DM. The current landscape of apps for T1DM does not seem to be close to what researchers promote from RCTs and user-centered design. A majority of the apps mainly support the collection of measurements, and only a few of them offer a wide range of features for a personalized self-management. Rewards and social communities are not yet well adopted in market environments.

Acknowledgments

The authors wish to acknowledge the ITACA Institute (Universitat Politècnica de València) for making possible the publication of this paper through the Excellence Support program for the publication in high-impact international journals.

Conflicts of Interest

None declared.

Multimedia Appendix 1

Search Strategy and results in PubMed (MEDLINE).

[[PDF File \(Adobe PDF File\), 35KB - mhealth_v6i11e12237_app1.pdf](#)]

References

1. American Diabetes Association. Classification and Diagnosis of Diabetes. *Diabetes Care* 2017 Dec;40(Suppl 1):S11-S24. [doi: [10.2337/dc17-S005](https://doi.org/10.2337/dc17-S005)] [Medline: [27979889](https://pubmed.ncbi.nlm.nih.gov/27979889/)]
2. Guariguata L, Whiting DR, Hambleton I, Beagley J, Linnenkamp U, Shaw JE. Global estimates of diabetes prevalence for 2013 and projections for 2035. *Diabetes Res Clin Pract* 2014 Feb;103(2):137-149. [doi: [10.1016/j.diabres.2013.11.002](https://doi.org/10.1016/j.diabres.2013.11.002)] [Medline: [24630390](https://pubmed.ncbi.nlm.nih.gov/24630390/)]
3. Diabetes Control/Complications Trial/Epidemiology of Diabetes Interventions/Complications (DCCT/EDIC) Research Group, Nathan DM, Zinman B, Cleary PA, Backlund JC, Genuth S, et al. Modern-day clinical course of type 1 diabetes mellitus after 30 years' duration: the diabetes control and complications trial/epidemiology of diabetes interventions and complications and Pittsburgh epidemiology of diabetes complications experience (1983-2005). *Arch Intern Med* 2009 Jul 27;169(14):1307-1316 [FREE Full text] [doi: [10.1001/archinternmed.2009.193](https://doi.org/10.1001/archinternmed.2009.193)] [Medline: [19636033](https://pubmed.ncbi.nlm.nih.gov/19636033/)]
4. Martinez-Millana A, Fico G, Fernández-Llatas C, Traver V. Performance assessment of a closed-loop system for diabetes management. *Med Biol Eng Comput* 2015 Dec;53(12):1295-1303. [doi: [10.1007/s11517-015-1245-3](https://doi.org/10.1007/s11517-015-1245-3)] [Medline: [25667016](https://pubmed.ncbi.nlm.nih.gov/25667016/)]
5. Lim S, Kang SM, Shin H, Lee HJ, Won Yoon J, Yu SH, et al. Improved glycemic control without hypoglycemia in elderly diabetic patients using the ubiquitous healthcare service, a new medical information system. *Diabetes Care* 2011 Feb 19;34(2):308-313 [FREE Full text] [doi: [10.2337/dc10-1447](https://doi.org/10.2337/dc10-1447)] [Medline: [21270188](https://pubmed.ncbi.nlm.nih.gov/21270188/)]
6. Wang J, Wang Y, Wei C, Yao NA, Yuan A, Shan Y, et al. Smartphone interventions for long-term health management of chronic diseases: an integrative review. *Telemed J E Health* 2014 Jun;20(6):570-583. [doi: [10.1089/tmj.2013.0243](https://doi.org/10.1089/tmj.2013.0243)] [Medline: [24787747](https://pubmed.ncbi.nlm.nih.gov/24787747/)]
7. Ashurst EJ, Jones RB, Abraham C, Jenner M, Boddy K, Besser RE, et al. The diabetes app challenge: user-led development and piloting of internet applications enabling young people with diabetes to set the focus for their diabetes consultations. *Med 2 0* 2014 Nov 07;3(2):e5 [FREE Full text] [doi: [10.2196/med20.3032](https://doi.org/10.2196/med20.3032)] [Medline: [25654312](https://pubmed.ncbi.nlm.nih.gov/25654312/)]
8. Chomutare T, Fernandez-Luque L, Arsand E, Hartvigsen G. Features of mobile diabetes applications: review of the literature and analysis of current applications compared against evidence-based guidelines. *J Med Internet Res* 2011 Sep 22;13(3):e65 [FREE Full text] [doi: [10.2196/jmir.1874](https://doi.org/10.2196/jmir.1874)] [Medline: [21979293](https://pubmed.ncbi.nlm.nih.gov/21979293/)]
9. Chavez S, Fedele D, Guo Y, Bernier A, Smith M, Warnick J, et al. Mobile Apps for the Management of Diabetes. *Diabetes Care* 2017 Dec;40(10):e145-e146 [FREE Full text] [doi: [10.2337/dc17-0853](https://doi.org/10.2337/dc17-0853)] [Medline: [28774944](https://pubmed.ncbi.nlm.nih.gov/28774944/)]
10. Castensøe-Seidenfaden P, Reventlov Husted G, Teilmann G, Hommel E, Olsen BS, Kensing F. Designing a Self-Management App for Young People With Type 1 Diabetes: Methodological Challenges, Experiences, and Recommendations. *JMIR Mhealth Uhealth* 2017 Oct 23;5(10):e124 [FREE Full text] [doi: [10.2196/mhealth.8137](https://doi.org/10.2196/mhealth.8137)] [Medline: [29061552](https://pubmed.ncbi.nlm.nih.gov/29061552/)]
11. Higgins J. *Cochrane Handbook for Systematic Reviews of Interventions Version 5.:* The Cochrane Collaboration; 2011. URL: <https://training.cochrane.org/handbook> [accessed 2018-10-29] [WebCite Cache ID [73XCJzC9A](https://www.webcitation.org/73XCJzC9A)]
12. Castensøe-Seidenfaden P, Husted GR, Jensen AK, Hommel E, Olsen B, Pedersen-Bjergaard U, et al. Testing a Smartphone App (Young with Diabetes) to Improve Self-Management of Diabetes Over 12 Months: Randomized Controlled Trial. *JMIR Mhealth Uhealth* 2018 Jun 26;6(6):e141 [FREE Full text] [doi: [10.2196/mhealth.9487](https://doi.org/10.2196/mhealth.9487)] [Medline: [29945861](https://pubmed.ncbi.nlm.nih.gov/29945861/)]
13. Cafazzo JA, Casselman M, Hamming N, Katzman DK, Palmert MR. Design of an mHealth app for the self-management of adolescent type 1 diabetes: a pilot study. *J Med Internet Res* 2012 May 08;14(3):e70 [FREE Full text] [doi: [10.2196/jmir.2058](https://doi.org/10.2196/jmir.2058)] [Medline: [22564332](https://pubmed.ncbi.nlm.nih.gov/22564332/)]
14. Goyal S, Nunn CA, Rotondi M, Couperthwaite AB, Reiser S, Simone A, et al. A Mobile App for the Self-Management of Type 1 Diabetes Among Adolescents: A Randomized Controlled Trial. *JMIR Mhealth Uhealth* 2017 Jun 19;5(6):e82 [FREE Full text] [doi: [10.2196/mhealth.7336](https://doi.org/10.2196/mhealth.7336)] [Medline: [28630037](https://pubmed.ncbi.nlm.nih.gov/28630037/)]
15. Kirwan M, Vandelanotte C, Fenning A, Duncan MJ. Diabetes self-management smartphone application for adults with type 1 diabetes: randomized controlled trial. *J Med Internet Res* 2013 Nov 13;15(11):e235 [FREE Full text] [doi: [10.2196/jmir.2588](https://doi.org/10.2196/jmir.2588)] [Medline: [24225149](https://pubmed.ncbi.nlm.nih.gov/24225149/)]
16. Clements MA, Staggs VS. A Mobile App for Synchronizing Glucometer Data: Impact on Adherence and Glycemic Control Among Youths With Type 1 Diabetes in Routine Care. *J Diabetes Sci Technol* 2017 Dec;11(3):461-467 [FREE Full text] [doi: [10.1177/1932296817691302](https://doi.org/10.1177/1932296817691302)] [Medline: [28745097](https://pubmed.ncbi.nlm.nih.gov/28745097/)]
17. Ryan EA, Holland J, Stroulia E, Bazelli B, Babwik SA, Li H, et al. Improved A1C Levels in Type 1 Diabetes with Smartphone App Use. *Can J Diabetes* 2017 Feb;41(1):33-40. [doi: [10.1016/j.jcjd.2016.06.001](https://doi.org/10.1016/j.jcjd.2016.06.001)] [Medline: [27570203](https://pubmed.ncbi.nlm.nih.gov/27570203/)]
18. Sun C, Malcolm JC, Wong B, Shorr R, Doyle M. Improving Glycemic Control in Adults and Children With Type 1 Diabetes With the Use of Smartphone-Based Mobile Applications: A Systematic Review. *Can J Diabetes* 2018 Mar 27. [doi: [10.1016/j.jcjd.2018.03.010](https://doi.org/10.1016/j.jcjd.2018.03.010)] [Medline: [30026048](https://pubmed.ncbi.nlm.nih.gov/30026048/)]
19. Chen L, Chuang L, Chang C, Wang C, Wang I, Chung Y, et al. Evaluating self-management behaviors of diabetic patients in a telehealthcare program: longitudinal study over 18 months. *J Med Internet Res* 2013 Dec 09;15(12):e266 [FREE Full text] [doi: [10.2196/jmir.2699](https://doi.org/10.2196/jmir.2699)] [Medline: [24323283](https://pubmed.ncbi.nlm.nih.gov/24323283/)]
20. Tomky D, Cypress M, Dang D, Maryniuk M, Peyrot M, Mensing C. *AADE7 Self-Care Behaviors*. In: *Diabetes Educ. Diabetes Educ SAGE Publications Sage CA: Los Angeles, CA; 2008:445-449.*
21. Ye Q, Khan U, Boren SA, Simoes EJ, Kim MS. An Analysis of Diabetes Mobile Applications Features Compared to AADE7: Addressing Self-Management Behaviors in People With Diabetes. *J Diabetes Sci Technol* 2018 Jul;12(4):808-816. [doi: [10.1177/1932296818754907](https://doi.org/10.1177/1932296818754907)] [Medline: [29390917](https://pubmed.ncbi.nlm.nih.gov/29390917/)]

22. Holtz BE, Murray KM, Hershey DD, Dunneback JK, Cotten SR, Holmstrom AJ, et al. Developing a Patient-Centered mHealth App: A Tool for Adolescents With Type 1 Diabetes and Their Parents. *JMIR Mhealth Uhealth* 2017 Apr 19;5(4):e53 [[FREE Full text](#)] [doi: [10.2196/mhealth.6654](https://doi.org/10.2196/mhealth.6654)] [Medline: [28428167](https://pubmed.ncbi.nlm.nih.gov/28428167/)]
23. Gabarron E, Årsand E, Wynn R. Social Media Use in Interventions for Diabetes: Rapid Evidence-Based Review. *J Med Internet Res* 2018 Aug 10;20(8):e10303 [[FREE Full text](#)] [doi: [10.2196/10303](https://doi.org/10.2196/10303)] [Medline: [30097421](https://pubmed.ncbi.nlm.nih.gov/30097421/)]
24. Sannino G, Forastiere M, De Pietro G. A Wellness Mobile Application for Smart Health: Pilot Study Design and Results. *Sensors (Basel)* 2017 Mar 17;17(3) [[FREE Full text](#)] [doi: [10.3390/s17030611](https://doi.org/10.3390/s17030611)] [Medline: [28304332](https://pubmed.ncbi.nlm.nih.gov/28304332/)]
25. Adams RJ. Improving health outcomes with better patient understanding and education. *Risk Manag Healthc Policy* 2010;3:61-72 [[FREE Full text](#)] [doi: [10.2147/RMHP.S7500](https://doi.org/10.2147/RMHP.S7500)] [Medline: [22312219](https://pubmed.ncbi.nlm.nih.gov/22312219/)]
26. Giunti G. 3MD for Chronic Conditions, a Model for Motivational mHealth Design: Embedded Case Study. *JMIR Serious Games* 2018 Aug 24;6(3):e11631 [[FREE Full text](#)] [doi: [10.2196/11631](https://doi.org/10.2196/11631)] [Medline: [30143476](https://pubmed.ncbi.nlm.nih.gov/30143476/)]
27. Dagliati A, Sacchi L, Tibollo V, Cogni G, Teliti M, Martinez-Millana A, et al. A dashboard-based system for supporting diabetes care. *J Am Med Inform Assoc* 2018 May 01;25(5):538-547. [doi: [10.1093/jamia/ocx159](https://doi.org/10.1093/jamia/ocx159)] [Medline: [29409033](https://pubmed.ncbi.nlm.nih.gov/29409033/)]
28. Martinez-Millana A, Bayo-Monton J, Argente-Pla M, Fernandez-Llatas C, Merino-Torres JF, Traver-Salcedo V. Integration of Distributed Services and Hybrid Models Based on Process Choreography to Predict and Detect Type 2 Diabetes. *Sensors (Basel)* 2017 Dec 29;18(1) [[FREE Full text](#)] [doi: [10.3390/s18010079](https://doi.org/10.3390/s18010079)] [Medline: [29286314](https://pubmed.ncbi.nlm.nih.gov/29286314/)]
29. Contreras I, Vehi J. Artificial Intelligence for Diabetes Management and Decision Support: Literature Review. *J Med Internet Res* 2018 May 30;20(5):e10775 [[FREE Full text](#)] [doi: [10.2196/10775](https://doi.org/10.2196/10775)] [Medline: [29848472](https://pubmed.ncbi.nlm.nih.gov/29848472/)]

Abbreviations

AADE7: American Association of Diabetes Educators 7 Self-Care Behaviors

CSV: comma-separated values

FF: Feature Factor

GUI: graphical user interface

HbA_{1c}: hemoglobin A_{1c}

mHealth: mobile health

RCT: randomized controlled trial

SMBG: self-monitoring blood glucose

T1DM: type 1 diabetes mellitus

Edited by G Eysenbach; submitted 17.09.18; peer-reviewed by A Fioravanti, TW Ho; comments to author 07.10.18; revised version received 12.10.18; accepted 01.11.18; published 21.11.18

Please cite as:

Martinez-Millana A, Jarones E, Fernandez-Llatas C, Hartvigsen G, Traver V

App Features for Type 1 Diabetes Support and Patient Empowerment: Systematic Literature Review and Benchmark Comparison
JMIR Mhealth Uhealth 2018;6(11):e12237

URL: <http://mhealth.jmir.org/2018/11/e12237/>

doi: [10.2196/12237](https://doi.org/10.2196/12237)

PMID: [30463839](https://pubmed.ncbi.nlm.nih.gov/30463839/)

©Antonio Martinez-Millana, Elena Jarones, Carlos Fernandez-Llatas, Gunnar Hartvigsen, Vicente Traver. Originally published in *JMIR Mhealth and Uhealth* (<http://mhealth.jmir.org>), 21.11.2018. This is an open-access article distributed under the terms of the Creative Commons Attribution License (<https://creativecommons.org/licenses/by/4.0/>), which permits unrestricted use, distribution, and reproduction in any medium, provided the original work, first published in *JMIR mhealth and uhealth*, is properly cited. The complete bibliographic information, a link to the original publication on <http://mhealth.jmir.org/>, as well as this copyright and license information must be included.