


ORIGINAL ARTICLE

Plasma procoagulant phospholipid clotting time and venous thromboembolism risk

Cathrine Ramberg PhD¹ | Line Wilsgård BSc¹ | Nadezhda Latysheva PhD¹ |
 Sigrid K. Brækkan PhD^{1,2} | Kristian Hindberg PhD¹ | Timofey Sovershaev MD, PhD¹ |
 Omri Snir PhD¹  | John-Bjarne Hansen MD, PhD^{1,2}

¹Thrombosis Research Centre (TREC), Department of Clinical Medicine, UiT - The Arctic University of Norway, Tromsø, Norway

²Division of Internal Medicine, University Hospital of North Norway, Tromsø, Norway

Correspondence

Cathrine Ramberg, Thrombosis Research Centre, Department of Clinical Medicine, UiT - The Arctic University of Norway, N-9037 Tromsø, Norway.
 Email: cathrine.c.ramberg@uit.no

Handling Editor: Dr Suzanne Cannegieter

Abstract

Background: Negatively charged procoagulant phospholipids, phosphatidylserine (PS) in particular, are vital to coagulation and expressed on the surface membrane of extracellular vesicles. No previous study has investigated the association between plasma procoagulant phospholipid clotting time (PPL_{CT}) and future risk of venous thromboembolism (VTE).

Objectives: To investigate the association between plasma PPL_{CT} and the risk of incident VTE in a nested case-control study.

Methods: We conducted a nested case-control study in 296 VTE patients and 674 age- and sex-matched controls derived from a general population cohort (The Tromsø Study 1994–2007). PPL_{CT} was measured in platelet-free plasma using a modified factor Xa-dependent clotting assay. Logistic regression was used to estimate odds ratio (OR) with 95% confidence intervals (CI) for VTE with PPL_{CT} modelled as a continuous variable across quartiles and in dichotomized analyses.

Results: There was a weak inverse association between plasma PPL_{CT} and risk of VTE per 1 standard deviation increase of PPL_{CT} (OR 0.93, 95% CI 0.80–1.07) and when comparing those with PPL_{CT} in the highest quartile (OR 0.89, 95% CI 0.60–1.30) with those in the lowest quartile. Subjects with PPL_{CT} >95th percentile had substantially lowered OR for VTE (OR 0.35, 95% CI 0.13–0.81). The inverse association was stronger when the analyses were restricted to samples taken shortly before the event. The risk estimates by categories of plasma PPL_{CT} were similar for deep vein thrombosis and pulmonary embolism.

Conclusion: Our findings suggest that high plasma PPL_{CT} is associated with reduced risk of VTE.

KEYWORDS

clotting, extracellular vesicles, phosphatidylserines, phospholipids, venous thromboembolism

This is an open access article under the terms of the Creative Commons Attribution-NonCommercial-NoDerivs License, which permits use and distribution in any medium, provided the original work is properly cited, the use is non-commercial and no modifications or adaptations are made.

© 2021 The Authors. *Research and Practice in Thrombosis and Haemostasis* published by Wiley Periodicals LLC on behalf of International Society on Thrombosis and Haemostasis (ISTH).

Essentials

- Plasma procoagulant phospholipid (PPL) activity can be measured as PPL clotting time (PPL_{CT}).
- We investigated the association between PPL_{CT} and risk of VTE in a nested case-control study.
- PPL_{CT} above the 95th percentile was associated with lower risk of future VTE.
- The association was stronger in analyses restricted to samples taken shortly before the VTE.

1 | INTRODUCTION

Venous thromboembolism (VTE), encompassing deep vein thrombosis (DVT) and pulmonary embolism (PE), is a common disease with an annual incidence of 1–2 per 1000 individuals.^{1,2} VTE is associated with severe short- and long-term complications, such as recurrent events,³ postthrombotic syndrome,⁴ post-PE syndrome,⁵ and death.⁶ The incidence of VTE has been stable⁷ or slightly increased during the past 2 decades,^{8,9} and VTE has become a major economic burden and challenge to health care systems.^{10,11} Therefore, there is a great need to identify novel biomarkers to improve risk stratification and unravel disease mechanisms to tailor preventive and treatment strategies with the long-term goal to lower the incidence of the disease.

Phosphatidyl serine (PS) is a negatively charged phospholipid with procoagulant potential expressed at the surface of activated platelets and extracellular vesicles (EVs).¹² The presence of PS on the membrane surface facilitates the assembly of coagulation factors VII (FVII), FIX, and FX and prothrombin (FII),¹³ and accelerates the activity of the tissue factor (TF):FVIIa complex by several orders of magnitude.¹⁴ Furthermore, a strong relationship between plasma levels of PS-positive EVs and procoagulant phospholipid (PPL) activity has been reported.¹⁵ Hence, plasma PPL clotting time (PPL_{CT}) may be considered as a measure of the potential to facilitate coagulation activation when blood is exposed to triggers of the coagulation system. Plasma PPL_{CT} is the time to clot formation in seconds measured in platelet-free plasma using a factor Xa-dependent clotting assay. A high PPL_{CT} indicates a low PPL activity.

Because most,^{16–19} but not all²⁰ observational studies have reported elevated plasma levels of EVs in VTE, implying short plasma PPL_{CT}, we hypothesized that prolonged PPL_{CT} was associated with lowered risk of VTE. We therefore aimed to investigate the association between plasma PPL_{CT}, measured by a modified factor Xa-dependent clotting assay, and the risk of incident VTE in a nested case-control study derived from the general population. In addition, we studied the effect of plasma procoagulant phospholipids on thrombin generation using the calibrated automated thrombinoscope (CAT) assay.

2 | MATERIAL AND METHODS

2.1 | Study population

The Tromsø Study is a large prospective single-center population-based cohort study with repeated health surveys of inhabitants of Tromsø, Norway.²¹ The study participants were recruited from the

fourth survey (1994–1995) of the Tromsø Study. All inhabitants aged 25 years and older living in the municipality of Tromsø were invited to participate, and 77% of those invited participated ($n = 27,158$). The participants were followed from the date of inclusion until an adjudicated incident VTE event, migration, death, or end of follow-up (September 1, 2007). All first lifetime events of VTE occurring among the participants in this period were identified using the hospital discharge diagnosis registry, the autopsy registry, and the radiology procedure registry from the University Hospital of North Norway, which is the sole provider of diagnostic radiology and treatment of VTE in the Tromsø area. Trained personnel adjudicated and recorded each VTE by extensively reviewing medical records. The identification and adjudication process of VTEs has previously been described in detail.²² In short, the adjudication criteria for VTE were presence of signs and symptoms of DVT or PE combined with objective confirmation by radiological procedures, which resulted in initiation of treatment (unless contraindications were specified). A VTE occurring in the presence of one or more provoking factors was classified as provoked. Provoking factors were: surgery or trauma (within 8 weeks before the event), acute medical condition (acute myocardial infarction, acute ischemic stroke, acute infections), immobilization (bed rest >3 days or confinement to wheelchair within the past 8 weeks, or long-distance travel ≥ 4 h within the past 14 days), or other factors specifically described as provoking by a physician in the medical record (e.g., intravascular catheter).

There were 462 individuals who experienced a VTE event during the follow-up period (1994–2007). For each case, two age- and sex-matched controls, who were alive at the index date of the corresponding VTE case, were randomly sampled from the source cohort ($n = 924$). In total, 349 (140 cases and 209 controls) lacked plasma samples and 67 (26 VTE cases and 41 controls) had plasma samples of insufficient quality (e.g., hemolysis). Hence, our study population consisted of 296 subjects with incident VTE and 674 age- and sex-matched controls. The regional committee for medical and health research ethics approved the study, and all participants provided informed written consent.

2.2 | Baseline measurements

At inclusion in Tromsø 4 (1994–1995), baseline information was collected by physical examinations, blood samples, and self-administered questionnaires. All participants had their height (to the nearest centimeter) and weight (to the nearest 0.5 kg) measured, wearing light clothing and no shoes. Body mass index (BMI) was calculated using weight in kilograms divided by height

in meters squared (kg/m^2). Information on previous cardiovascular disease and cancer was collected from the self-administered questionnaires.

2.3 | Handling of blood samples

Nonfasting blood samples were collected at baseline inclusion in Tromsø 4 (1994–1995) by venipuncture of an antecubital vein, with minimal stasis, into blood collection tubes containing ethylenediaminetetraacetic acid ($\text{K}_3\text{-EDTA}$ 40 μL , 0.37 mol/L per tube) (Becton Dickinson, Meylan Cedex). Cell counts were performed using a Coulter Counter (Coulter Electronics). Platelet poor plasma (PPP) was prepared by centrifugation at 3000g for 10 min at room temperature. Plasma aliquots of PPP were transferred to 1-ml cryovials (Greiner Laboratechnik, Nürtingen, Germany) and stored at -80°C .

2.4 | Measurement of PPL_{CT} in plasma

PPL clotting time was measured in platelet free (PFP) EDTA plasma using a modified factor Xa-dependent clotting assay.²³ In short, PPP samples were thawed and centrifuged at 13,500g for 2 min to generate PFP. Phospholipid-depleted plasma (PPLDP) used as a reagent in the assay was prepared from pooled citrated PFP ($n = 18$) centrifuged at 100,000g for 60 min at 16°C (Beckman Optima LE-80K Ultracentrifuge, rotor SW40TI; Beckman Coulter). PPLDP was aliquoted and stored at -80°C until use. Twenty-five microliters of sample PFP was mixed with 25 μL of PPLDP and incubated for 2 minutes at 37°C , before the reaction was initiated by the addition of 100 μL prewarmed factor Xa reagent containing bovine factor Xa (0.1 U/ml) in 15 mM calcium chloride, 100 mM sodium chloride, and 20 mM HEPES buffer (pH 7.0). Clotting tests were carried out in duplicate on a StarT4 instrument from Diagnostica Stago (Asnières sur Seine Cedex, France) and measured in seconds of clotting time. The variation between runs were adjusted for by an internal standard. The technician carrying out the measurements was blinded to the identity and case-control status of the samples. The PPL assay displayed low intra- and inter-series coefficients of variation (CV) ranging from 2.8% to 4.1%.

2.5 | Measurements of thrombin generation in plasma

Thrombin generation was assessed using a calibrated automated thrombinoscope and was performed as described by Hemker et al²⁴ and manufacturer's instructions (Thrombinoscope BV). Thrombin generation was measured in a Fluoroscan Ascent Fluorometer (Thermolabsystems OY) equipped with a dispenser. Fluorescence intensity was detected at wavelengths of 355 nm (excitation filter) and 460 nm (emission filter). Briefly, 40 μL of plasma was mixed with

40 μL Hepes buffer (20 mM Hepes and 140 mM NaCl) and pipetted into the wells of round bottom 96-well microtiter plates (Immulon, Lab Consult, Lillestrøm, Norway). Ten microliters of TF solution (final concentration of 3 pM) (Innovin; Bode Behring) and 10 μL of a standardized phospholipid in solution (diluted 1:20) (UPTT; BioData Corporation) was added as triggers. Both TF and UPTT were diluted to the stated concentrations in Hepes buffer. The plasma samples measured were a combination of pooled citrated PFP and PPLDP added in ratios of 100:0, 80:20, 60:40, 40:60, 20:80, 10:90, and 0:100, respectively. For each experiment, a fresh mixture of 2.5 mM fluorogenic substrate (Z-Gly-Gly-Arg-AMC from Bachem, Bubendorf, Switzerland), 0.1 M CaCl_2 , 20 mM Hepes (Sigma Aldrich), and 60 mg/ml BSA (A-7030, Sigma Aldrich) with pH 7.35 was prepared. Each dilution of PFP/PPLDP was assigned its own calibrator (Thrombinoscope BV, Maastricht, The Netherlands). The computer software calculated lag time (min), the time to peak (min), the peak of thrombin generation (nM), and the area under the thrombin generation curve ($\text{nM} \cdot \text{min}$) and endogenous thrombin potential (ETP). Plasma samples were run in duplicate and each experiment was repeated three times.

2.6 | Statistical analysis

Statistical analyses were performed using R (version 4.0.4. for Windows; R Foundation). Unconditional logistic regression models were used to estimate odds ratios (ORs) for VTE with 95% confidence intervals (CIs) with plasma PPL_{CT} used as a continuous variable, discretized to quartiles, and dichotomized according to $\text{PPL}_{\text{CT}} \leq 25\text{th}$ percentile versus $\text{PPL}_{\text{CT}} > 95\text{th}$ percentile. We applied three adjustment models: model 1 included age and sex, model 2 included model 1 + BMI, and model 3 included model 2 + history of cardiovascular disease (CVD), history of cancer and platelet count. The PPL_{CT} quartile cutoffs were determined using the control group.

Because the follow-up time in the source cohort was long (>12 years for many persons), the results based on baseline PPL_{CT} measurements could be influenced by regression dilution bias.²⁵ To investigate this, we performed analyses in which we restricted the maximum time from blood sampling in Tromsø 4 to the VTE events, while keeping all controls in the analyses. The logistic regression analyses on time restrictions were set to require at least 10 VTE events, and ORs were generated every time a VTE event occurred and plotted as a function of time from blood sampling to VTE.

Finally, generalized additive regression plots were generated to visualize the association over the continuum of PPL_{CT} values by modelling PPL_{CT} with a smoothing spline fit in a logistic model adjusted for age, sex, and BMI. We created a plot for the full follow-up, as well as plots restricted to the first 3 and 6 years of follow-up, respectively. We transformed PPL_{CT} values to follow a perfect standard normal distribution (i.e., mean value of 0 and standard deviation of 1) before entering the analyses.

	Clotting time (s)			
	Q1 (26.5–51.7)	Q2 (51.7–60.0)	Q3 (60.0–71.5)	Q4 (71.5–148.5)
Subjects, n	252	243	230	245
Age, y	59 ± 14	61 ± 13	61 ± 14	61 ± 14
Sex, % men (n)	42.9 (108)	47.7 (116)	46.5 (107)	47.8 (117)
BMI, kg/m ²	26.1 ± 4.5	26.6 ± 4.0	26.6 ± 4.4	26.5 ± 4.1
CVD ^a , % (n)	13.5 (34)	16.0 (39)	15.2 (35)	18.8 (46)
Cancer ^a , % (n)	7.1 (18)	6.2 (15)	5.2 (12)	2.9 (7)
WBC, 10 ⁹ /L	7.2 ± 1.9	7.1 ± 3.3	6.8 ± 1.7	6.8 ± 1.9
Platelet count, 10 ⁹ /L	259 ± 57	247 ± 53	240 ± 47	230 ± 52
Hematocrit, %	41.5 ± 3.3	41.7 ± 3.6	41.4 ± 3.0	41.5 ± 3.4

Note: Values are mean ±1 standard deviation or percentage with absolute numbers in parentheses.

Abbreviations: BMI, body mass index; CVD, cardiovascular disease (myocardial infarction, angina, stroke); WBC, white blood cell count.

^aSelf-reported history of disease.

TABLE 1 Baseline characteristics of the study population (n = 970) across quartiles of PPL clotting time

TABLE 2 Characteristics of the VTE patients (n = 296)

Age at VTE, y	68 ± 14
Sex, % men	47.0 (139)
Deep vein thrombosis	58.8 (174)
Pulmonary embolism	41.2 (122)
Unprovoked VTE	39.9 (118)
Provoked VTE	60.1 (178)
Active cancer	27.7 (82)
Surgery/trauma	21.3 (63)
Immobilization	18.2 (54)
Acute medical condition	15.9 (47)
Other factors	4.1 (12)

Note: Values are mean ±1 standard deviation or percentage with absolute numbers in parenthesis.

Abbreviation: VTE, venous thromboembolism.

3 | RESULTS

The distribution of characteristics of the study population at baseline across quartiles of plasma PPL_{CT} is presented in Table 1. The mean age and BMI were similar, whereas the percentage of men (42.9% in Q1–47.8% in Q4) and the proportion of individuals with self-reported CVD (13.5% in Q1–18.8% in Q4) increased across quartiles. In contrast, the proportion of individuals with self-reported cancer decreased (7.1% in Q1–2.9% in Q4) across quartiles of PPL_{CT}.

Characteristics of patients at VTE diagnosis are shown in Table 2. The mean age at the time of VTE was 68 years, 47% were men, and 59% of the events were DVT. The majority of the VTE events were provoked (60.1%), and the leading provoking factors were active cancer (27.7%), surgery or trauma (21.3%), and immobilization (18.2%).

The ORs of VTE across categories (quartiles and >95th percentile) and per 1 standard deviation (i.e., 14.5 s) increase in plasma PPL_{CT}

are shown in Table 3. There was a weak inverse association between plasma PPL_{CT} and risk of VTE per 1 standard deviation increase of PPL_{CT} (OR 0.93, 95% CI 0.80–1.07), and in subjects with PPL_{CT} in the highest quartile (OR 0.89, 95% CI 0.60–1.30) compared with those in the lowest quartile, in analyses adjusted for age, sex, and BMI. However, subjects with particularly prolonged PPL_{CT} (>95th percentile) had lower ORs for VTE (OR 0.35, 95% CI 0.13–0.81) than those with PPL_{CT} ≤25th percentile in analyses adjusted for age, sex, and BMI. Similar results were found for DVT and PE (Table 3), but the OR for PE (OR 0.14, 95% CI 0.01–0.69) was lower than for DVT (OR 0.50, 95% CI 0.17–1.25) in analyses comparing individuals with PPL_{CT} >95th percentile versus ≤25th percentile. Further adjustment for history of CVD, history of cancer, and platelet count had negligible influence on the results (Table 3, model 3). The ORs for unprovoked and provoked VTE, DVT, and PE were similar to those found in the overall analyses (data not shown).

To consider the possibility of underestimating ORs because of regression dilution bias, we estimated ORs for VTE among subjects with the highest (highest quartile) versus lowest (lowest quartile) plasma PPL_{CT} as a function of time between blood sampling and the VTE events (Figure 1). The inverse association between high plasma PPL_{CT} and VTE was stronger with shortened time between the blood sampling and the VTE events. The ORs for DVT and PE as a function of time between blood sampling and events showed similar patterns as the ORs for overall VTE (data not shown).

The ORs of VTE over the continuum of PPL_{CT} are visualized in Figure 2. When analyses were performed with full follow-up time, it was clear that the inverse association occurred at the upper extreme of the PPL_{CT} values (Figure 2A). In analyses restricted to the first 6 (Figure 2B) and 3 years of follow-up (Figure 2C), the association was stronger and showed a more linear pattern.

To study the effect of plasma procoagulant phospholipids on thrombin generation, mixtures of pooled PFP and PPLDP were analyzed using the CAT assay. As shown in Figure 3A, thrombin

TABLE 3 Odds ratios (OR) with 95% confidence intervals (CI) for venous thromboembolism (VTE), deep vein thrombosis, and pulmonary embolism, per standard deviation (SD) increase and across increasing quartiles of procoagulant phospholipid (PPL) clotting time (s)

PPL clotting time (s)	Cases n	Controls n	Model 1 OR (95% CI)	Model 2 OR (95% CI)	Model 3 OR (95% CI)
Venous thromboembolism					
Per SD	296	674	0.94 (0.81–1.08)	0.93 (0.80–1.07)	0.95 (0.82–1.10)
Q1 (26.5–54.3)	83	169	1 (ref)	1 (ref)	1 (ref)
Q2 (54.3–63.5)	74	169	0.89 (0.61–1.30)	0.87 (0.59–1.27)	0.84 (0.57–1.24)
Q3 (63.5–74.5)	63	167	0.77 (0.52–1.13)	0.75 (0.51–1.12)	0.77 (0.51–1.15)
Q4 (74.5–148.5)	76	169	0.92 (0.63–1.34)	0.89 (0.60–1.30)	0.94 (0.64–1.40)
≤25% (26.5–54.3)	83	169	1 (ref)	1 (ref)	1 (ref)
>95% (89.9–148.5)	6	34	0.36 (0.13–0.83)	0.35 (0.13–0.81)	0.32 (0.10–0.78)
Deep vein thrombosis					
Per 1 SD increase	174	674	0.98 (0.83–1.17)	0.97 (0.82–1.15)	0.98 (0.82–1.18)
Q1 (26.5–54.3)	50	169	1 (ref)	1 (ref)	1 (ref)
Q2 (54.3–63.5)	32	169	0.64 (0.39–1.05)	0.63 (0.38–1.03)	0.57 (0.34–0.94)
Q3 (63.5–74.5)	47	167	0.96 (0.61–1.51)	0.95 (0.60–1.49)	0.90 (0.59–1.51)
Q4 (74.5–148.5)	45	169	0.91 (0.57–1.43)	0.87 (0.55–1.38)	0.90 (0.56–1.45)
≤25% (26.5–54.3)	50	169	1 (ref)	1 (ref)	1 (ref)
>95% (89.9–148.5)	5	34	0.50 (0.16–1.25)	0.50 (0.16–1.25)	0.43 (0.12–1.15)
Pulmonary embolism					
Per 1 SD increase	122	674	0.88 (0.71–1.06)	0.87 (0.71–1.06)	0.90 (0.73–1.11)
Q1 (26.5–54.3)	33	169	1 (ref)	1 (ref)	1 (ref)
Q2 (54.3–63.5)	42	169	1.26 (0.76–2.09)	1.22 (0.73–2.04)	1.23 (0.74–2.08)
Q3 (63.5–74.5)	16	167	0.49 (0.25–0.90)	0.48 (0.25–0.89)	0.51 (0.26–0.95)
Q4 (74.5–148.5)	31	169	0.92 (0.54–1.58)	0.89 (0.52–1.54)	0.98 (0.56–1.71)
≤25% (26.5–54.3)	33	169	1 (ref)	1 (ref)	1 (ref)
>95% (89.9–148.5)	1	34	0.15 (0.01–0.72)	0.14 (0.01–0.69)	0.15 (0.01–0.76)

Note: Model 1: adjusted for age and sex. Model 2: adjusted for age, sex, and body mass index. Model 3: age, sex, body mass index, history of cardiovascular disease, cancer, and platelet count. 1 standard deviation (SD) of PPL_{CT} = 14.5 s.

generation declined in a dose-dependent manner with declining percentage of PFP added (i.e., declining levels of PPL). A clear dose-response relationship was observed between plasma PPL levels and parameters of the CAT assay (i.e., lag-time and ETP) (Figure 3B and 3C). The PPL_{CT} correlated strongly with both lag time ($r = 0.99$, $p \leq 0.0001$, Figure 3D) and ETP ($r = -0.98$, $p \leq 0.0001$, Figure 3E).

4 | DISCUSSION

We investigated the association between plasma PPL_{CT} and future risk of VTE in a population-based nested case-control study. Prolonged PPL_{CT} displayed a modest inverse association with VTE risk both when PPL_{CT} were used as a continuous and as a categorized variable in the logistic regression models. However, extremely prolonged PPL_{CT} (above the 95th percentile) was associated with lowered risk of VTE (OR 0.35) compared with PPL_{CT} in the lowest quartile. Similar results were observed in subgroup analysis for PE and DVT. The results appeared to be influenced by regression

dilution bias because the ORs for VTE by plasma PPL_{CT} decreased substantially with shortened time between blood collection and the VTE events. Our findings support the hypothesis of an inverse association between plasma PPL_{CT} and VTE risk.

Our study is, to the best of our knowledge, the first to investigate the association between plasma PPL_{CT} and future risk of VTE in the general population. In a recent cross-sectional study including 100 patients referred to the emergency department under suspicion of VTE, plasma PPL_{CT}, assessed by the STA Procoag PPL assay (Diagnostica Stago), did not discriminate between patients with ($n = 31$) and without VTE.²⁶ The lack of discriminatory diagnostic power by the PPL assay may have been diluted by other conditions associated with shortened PPL_{CT} among patients without VTE. However, this does not exclude the potential association between plasma PPL_{CT} and future risk of VTE. Further, plasma levels of modifiable biomarkers, such as PPL_{CT}, are expected to change over time. Fluctuations in the exposure variable during follow-up will lead to the phenomenon called regression dilution bias,²⁵ which usually results in an underestimation of the true association

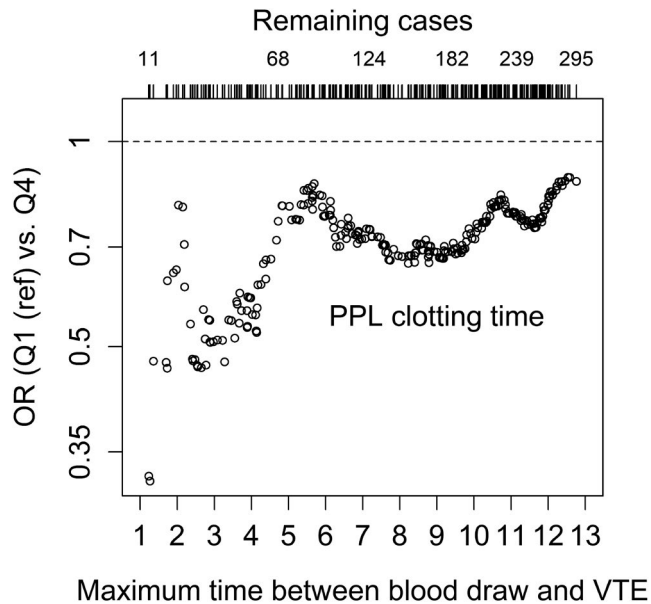


FIGURE 1 Estimated odds ratios (OR) for venous thromboembolism (VTE) by procoagulant phospholipid clotting time (PPL_{CT}) quartile 4 compared with quartile 1. Each circle represents an analysis for a given maximum time between blood draw and VTE. At each time restriction, only VTE cases with a time below this maximum were included in the analysis, whereas all controls were included. The analysis is adjusted for age, sex, and body mass index

between exposure and outcome. Accordingly, we found that the risk estimates for VTE declined substantially with shortened time between measurement of plasma PPL_{CT} and the VTE events.

Circumstantial evidence supports an association between plasma PPL_{CT} and the risk of future VTE. First, the PPL_{CT} is inversely associated with annexin V-positive EVs^{15,27} and high plasma levels of EVs are associated with VTE risk in most,¹⁶⁻¹⁹ but not all studies.^{20,28} Second, in a cross-sectional study including plasma samples from 100 healthy individuals and patients with obstructive sleep apnea, plasma PPL_{CT} showed strong and inverse correlations to parameters of thrombin generation, such as ETP and peak thrombin concentration, using the CAT assay with the addition of minimal amounts of phospholipids and tissue factor (1 pM) to trigger thrombin generation.²⁷ Accordingly, we demonstrated a clear dose-response relationship between plasma PPL_{CT} and parameters of the CAT assay. In addition, several studies have shown that parameters of the CAT assay, particularly lag time and ETP, are associated with incident²⁹⁻³³ and recurrent³⁴⁻³⁶ VTE. Third, carriers of rare (e.g., deficiencies of antithrombin, protein C and S)³⁷ and common (e.g., factor V Leiden and the prothrombin mutation G20210A)^{38,39} prothrombotic genotypes had significantly shorter plasma PPL_{CT} than noncarriers, providing indirect evidence for lower risk of VTE with prolonged plasma PPL_{CT}.

Although we observed an inverse association of PPL_{CT} with both DVT and PE, the OR for PE (0.14) was lower than that of DVT (0.50).

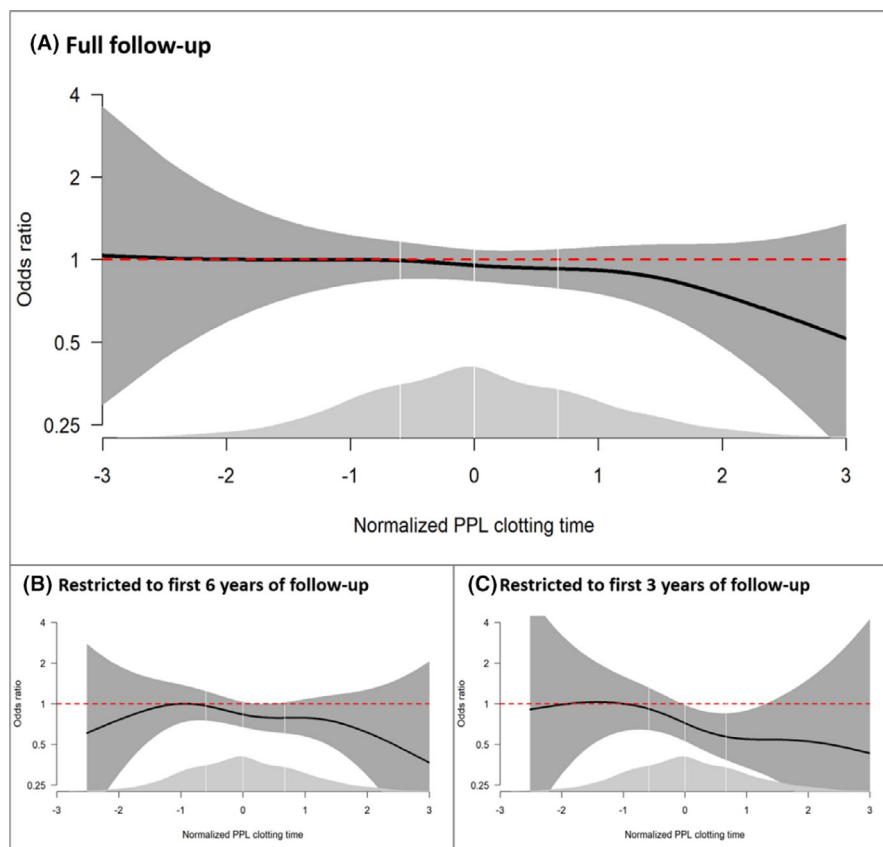
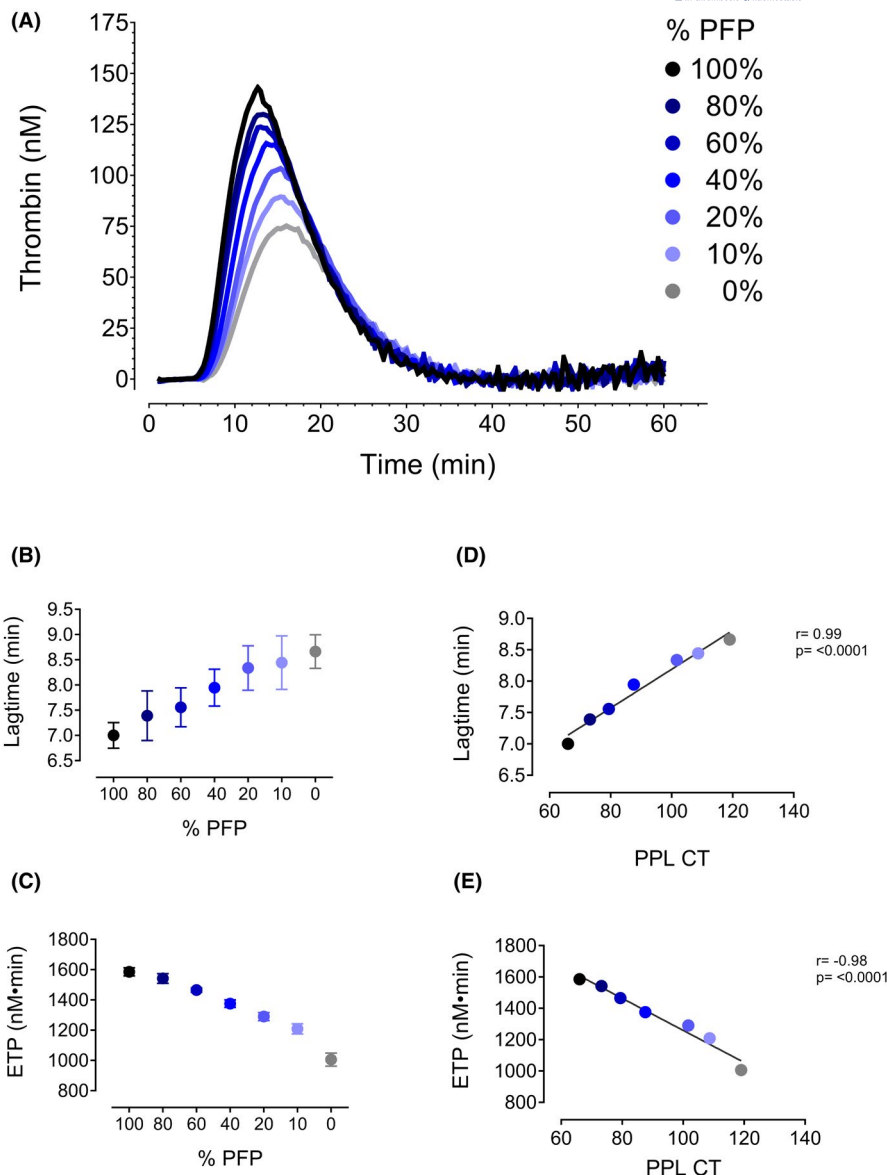


FIGURE 2 Odds ratios (ORs) of venous thromboembolism (VTE) as a function of procoagulant phospholipid clotting time (PPL_{CT}) in a generalized additive regression model adjusted for age, sex, and body mass index. Panel A shows the results for the full follow-up, whereas panels B and C show the results of analyses restricted to the first 6 and 3 years of follow-up, respectively. The solid lines indicate ORs, and the surrounding shaded areas show the 95% confidence intervals. PPL_{CT} values were transformed to follow a perfect standard normal distribution (mean value of 0 and standard deviation of 1) before entering the analyses. The distribution of PPL_{CT} is shown as density plots (light gray) at the bottom; white vertical lines indicate quartile cutoffs

FIGURE 3 Pooled platelet-free plasma (PFP) was mixed in varying ratios (100%, 80%, 60%, 40%, 20%, 10%; and 0%) with phospholipid-depleted plasma (PPLDP) and run on the CAT assay. (A) Thrombin generation curves. A dose-dependent relationship was observed for both (B) lag time and (C) ETP and % PFP added to the reaction. PPL clotting time (PPL_{CT}) correlates strongly with both (D) lag time and (E) ETP



The potential biological mechanism for this difference is not known. Because only 50% of PEs originate from DVTs,⁴⁰ this may suggest that prolonged PPL_{CT} was accompanied by less thrombus formation at other anatomical sites vulnerable for embolization (e.g., right atrium associated with atrial fibrillation⁴¹) or *in situ* thrombus formation within the lungs. However, the apparent effect difference could also be a chance finding because the subgroups are small.

Strengths of our study include recruitment of VTE patients from a population-based cohort with age- and sex-matched controls from the same source population in which blood samples were collected before the VTE event. This allows assumptions on the direction of the observed association between plasma PPL_{CT} and VTE. Further, the modified FXa-dependent PPL clotting assay is highly sensitive and displayed a low CV of $\leq 4\%$. A limitation with our study is that plasma samples used were collected in 1994–1995 and stored at -80°C until analysis >20 years later. The long storage time, as well as freezing and thawing, might possibly affect the plasma PPL_{CT}. However, it is unlikely that it would affect our end results because

the potential effects would be similar for both cases and controls. Moreover, the PPL levels were only measured in baseline samples, whereas potential changes during follow-up were not accounted for. This might lead to an underestimation of the true association between plasma levels of PPL_{CT} and VTE risk because of regression dilution bias.²⁵ In our study, some plasma samples were excluded due to either missing samples or poor plasma quality. The plasma samples were missing completely at random; hence, there was no selection bias.

In conclusion, results from our nested case-control study indicate an inverse association between plasma PPL_{CT} (measured by a modified FXa-dependent PPL clotting assay) and the risk of future VTE. Moreover, we demonstrated a clear relationship between plasma PPL_{CT} and thrombin generation parameters. Subjects with PPL_{CT} above the 95th percentile had particularly low risk of future VTE, and the results were strongly influenced by regression dilution bias. Further studies are needed to validate our findings and unravel the mechanisms behind this observation.

ACKNOWLEDGMENTS

Thrombosis Research Center (TREC) was supported by an independent grant from Stiftelsen Kristian Gerhard Jebsen.

RELATIONSHIP DISCLOSURE

The authors state that they have no conflict of interests.

AUTHOR CONTRIBUTIONS

C. Ramberg planned experiments, analyzed data, and wrote and revised the manuscript. L. Wilsgård and N. Latysheva planned and performed experiments and revised the manuscript. S.K. Brækkan analyzed data and revised the manuscript. K. Hindberg performed statistical analysis and revised the manuscript. O. Snir planned experiments, analyzed data, and revised the manuscript. T. Sovershaev revised the manuscript. J.-B. Hansen conceived and designed the study, analyzed data, and participated in writing and revision of the manuscript.

ORCID

Omri Snir  <https://orcid.org/0000-0001-5322-0021>

REFERENCES

- Rosendaal FR. Causes of venous thrombosis. *Thromb J*. 2016;14:24. doi:10.1186/s12959-016-0108-y
- Silverstein MD, Heit JA, Mohr DN, Petterson TM, O'Fallon WM, Melton LJ 3rd. Trends in the incidence of deep vein thrombosis and pulmonary embolism: a 25-year population-based study. *Arch Intern Med*. 1998;158:585-593.
- Heit JA. Epidemiology of venous thromboembolism. *Nat Rev Cardiol*. 2015;12:464-474. doi:10.1038/nrcardio.2015.83
- Prandoni P, Kahn SR. Post-thrombotic syndrome: prevalence, prognostication and need for progress. *Br J Haematol*. 2009;145:286-295. doi:10.1111/j.1365-2141.2009.07601.x
- Klok FA, van der Hulle T, den Exter PL, Lankeit M, Huisman MV, Konstantinides S. The post-PE syndrome: a new concept for chronic complications of pulmonary embolism. *Blood Rev*. 2014;28:221-226. doi:10.1016/j.blre.2014.07.003
- Arshad N, Bjori E, Hindberg K, Isaksen T, Hansen JB, Braekkan SK. Recurrence and mortality after first venous thromboembolism in a large population-based cohort. *J Thromb Haemost*. 2017;15:295-303. doi:10.1111/jth.13587
- Heit JA, Ashrani A, Crusan DJ, McBane RD, Petterson TM, Bailey KR. Reasons for the persistent incidence of venous thromboembolism. *Thromb Haemost*. 2017;117:390-400. doi:10.1160/TH16-07-0509
- Huang W, Goldberg RJ, Anderson FA, Kiefe CI, Spencer FA. Secular trends in occurrence of acute venous thromboembolism: the Worcester VTE study (1985-2009). *Am J Med*. 2014;127(9):829-839.e5. doi:10.1016/j.amjmed.2014.03.041
- Arshad N, Isaksen T, Hansen JB, Braekkan SK. Time trends in incidence rates of venous thromboembolism in a large cohort recruited from the general population. *Eur J Epidemiol*. 2017;32:299-305. doi:10.1007/s10654-017-0238-y
- Raskob GE, Angchaisuksiri P, Blanco AN, et al.; ISTH Steering Committee for World Thrombosis Day. Thrombosis: a major contributor to the global disease burden. *J Thromb Haemost*. 2014;12:1580-1590. doi:10.1111/jth.12698
- Grosse SD, Nelson RE, Nyarko KA, Richardson LC, Raskob GE. The economic burden of incident venous thromboembolism in the United States: a review of estimated attributable healthcare costs. *Thromb Res*. 2016;137:3-10. doi:10.1016/j.thromres.2015.11.033
- Owens AP 3rd, Mackman N. Microparticles in hemostasis and thrombosis. *Circ Res*. 2011;108:1284-1297. doi:10.1161/CIRCRESAHA.110.233056
- Zwaal RF, Comfurius P, Bevers EM. Lipid-protein interactions in blood coagulation. *Biochim Biophys Acta*. 1998;1376:433-453.
- Ruf W, Rehemtulla A, Morrissey JH, Edgington TS. Phospholipid-independent and -dependent interactions required for tissue factor receptor and cofactor function. *J Biol Chem*. 1991;266:2158-2166.
- Connor DE, Exner T, Ma DD, Joseph JE. Detection of the procoagulant activity of microparticle-associated phosphatidylserine using XACT. *Blood Coagul Fibrinolysis*. 2009;20:558-564. doi:10.1097/MBC.0b013e32832ee915
- Chirinos JA, Heresi GA, Velasquez H, et al. Elevation of endothelial microparticles, platelets, and leukocyte activation in patients with venous thromboembolism. *J Am Coll Cardiol*. 2005;45:1467-1471.
- Campello E, Spiezia L, Radu CM, et al. Endothelial, platelet, and tissue factor-bearing microparticles in cancer patients with and without venous thromboembolism. *Thromb Res*. 2011;127:473-477. doi:10.1016/j.thromres.2011.01.002
- Bucciarelli P, Martinelli I, Artoni A, et al. Circulating microparticles and risk of venous thromboembolism. *Thromb Res*. 2012;129:591-597. doi:10.1016/j.thromres.2011.08.020
- Jamaly S, Basavaraj MG, Starikova I, Olsen R, Braekkan SK, Hansen JB. Elevated plasma levels of P-selectin glycoprotein ligand-1-positive microvesicles in patients with unprovoked venous thromboembolism. *J Thromb Haemost*. 2018;16(8):1546-1554. doi:10.1111/jth.14162
- Ye R, Ye C, Huang Y, Liu L, Wang S. Circulating tissue factor positive microparticles in patients with acute recurrent deep venous thrombosis. *Thromb Res*. 2012;130:253-258. doi:10.1016/j.thromres.2011.10.014
- Jacobsen BK, Eggen AE, Mathiesen EB, Wilsgaard T, Njolstad I. Cohort profile: the Tromso study. *Int J Epidemiol*. 2012;41:961-967. doi:10.1093/ije/dyr049
- Braekkan SK, Borch KH, Mathiesen EB, Njolstad I, Wilsgaard T, Hansen JB. Body height and risk of venous thromboembolism: the Tromso Study. *Am J Epidemiol*. 2010;171:1109-1115. doi:10.1093/aje/kwq066
- Ramberg C, Jamaly S, Latysheva N, et al. A modified clot-based assay to measure negatively charged procoagulant phospholipids. *Sci Rep*. 2021;11:9341. doi:10.1038/s41598-021-88835-y
- Hemker HC, Giesen P, Al Dieri R, et al. Calibrated automated thrombin generation measurement in clotting plasma. *Pathophysiol Haemost Thromb*. 2003;33:4-15. doi:10.1159/000071636
- Hutcheon JA, Chioloro A, Hanley JA. Random measurement error and regression dilution bias. *BMJ*. 2010;340:c2289. doi:10.1136/bmj.c2289
- Riva N, Vella K, Hickey K, et al. Biomarkers for the diagnosis of venous thromboembolism: D-dimer, thrombin generation, procoagulant phospholipid and soluble P-selectin. *J Clin Pathol*. 2018;71:1015-1022. doi:10.1136/jclinpath-2018-205293
- Ayers L, Harrison P, Kohler M, Ferry B. Procoagulant and platelet-derived microvesicle absolute counts determined by flow cytometry correlates with a measurement of their functional capacity. *J Extracell Vesicles*. 2014;3(1):25348. doi:10.3402/jev.v3.25348
- Owen BA, Xue A, Heit JA, Owen WG. Procoagulant activity, but not number, of microparticles increases with age and in individuals after a single venous thromboembolism. *Thromb Res*. 2011;127:39-46. doi:10.1016/j.thromres.2010.10.018
- van Hylckama VA, Christiansen SC, Luddington R, Cannegieter SC, Rosendaal FR, Baglin TP. Elevated endogenous thrombin potential

- is associated with an increased risk of a first deep venous thrombosis but not with the risk of recurrence. *Br J Haematol*. 2007;138:769-774. doi:10.1111/j.1365-2141.2007.06738.x
30. Hoiland II, Liang RA, Hindberg K, et al. Associations between complement pathways activity, mannose-binding lectin, and odds of unprovoked venous thromboembolism. *Thromb Res*. 2018;169:50-56. doi:10.1016/j.thromres.2018.06.019
 31. Lutsey PL, Folsom AR, Heckbert SR, Cushman M. Peak thrombin generation and subsequent venous thromboembolism: the Longitudinal Investigation of Thromboembolism Etiology (LITE) study. *J Thromb Haemost*. 2009;7:1639-1648. doi:10.1111/j.1538-7836.2009.03561.x
 32. Segers O, van Oerle R, ten Cate H, Rosing J, Castoldi E. Thrombin generation as an intermediate phenotype for venous thrombosis. *Thromb Haemost*. 2010;103:114-122. doi:10.1160/TH09-06-0356
 33. Besser M, Baglin C, Luddington R, van Hylckama VA, Baglin T. High rate of unprovoked recurrent venous thrombosis is associated with high thrombin-generating potential in a prospective cohort study. *J Thromb Haemost*. 2008;6:1720-1725. doi:10.1111/j.1538-7836.2008.03117.x
 34. Eichinger S, Hron G, Kollars M, Kyrle PA. Prediction of recurrent venous thromboembolism by endogenous thrombin potential and D-dimer. *Clin Chem*. 2008;54:2042-2048. doi:10.1373/clinchem.2008.112243
 35. van Hylckama VA, Baglin CA, Luddington R, MacDonald S, Rosendaal FR, Baglin TP. The risk of a first and a recurrent venous thrombosis associated with an elevated D-dimer level and an elevated thrombin potential: results of the THE-VTE study. *J Thromb Haemost*. 2015;13:1642-1652. doi:10.1111/jth.13043
 36. Hron G, Kollars M, Binder BR, Eichinger S, Kyrle PA. Identification of patients at low risk for recurrent venous thromboembolism by measuring thrombin generation. *JAMA*. 2006;296:397-402. doi:10.1001/jama.296.4.397
 37. Campello E, Spiezia L, Radu CM, et al. Circulating microparticles and the risk of thrombosis in inherited deficiencies of antithrombin, protein C and protein S. *Thromb Haemost*. 2016;115:81-88. doi:10.1160/TH15-04-0286
 38. Campello E, Spiezia L, Radu CM, et al. Circulating microparticles in carriers of factor V Leiden with and without a history of venous thrombosis. *Thromb Haemost*. 2012;108:633-639. doi:10.1160/TH12-05-0280
 39. Campello E, Spiezia L, Radu CM, et al. Circulating microparticles in carriers of prothrombin G20210A mutation. *Thromb Haemost*. 2014;112:432-437. doi:10.1160/TH13-12-1006
 40. van Langevelde K, Sramek A, Vincken PW, van Rooden JK, Rosendaal FR, Cannegieter SC. Finding the origin of pulmonary emboli with a total-body magnetic resonance direct thrombus imaging technique. *Haematologica*. 2013;98:309-315. doi:10.3324/haematol.2012.069195
 41. Enga KF, Rye-Holmboe I, Hald EM, et al. Atrial fibrillation and future risk of venous thromboembolism: the Tromso study. *J Thromb Haemost*. 2015;13:10-16. doi:10.1111/jth.12762

How to cite this article: Ramberg C, Wilsgård L, Latysheva N, et al. Plasma procoagulant phospholipid clotting time and venous thromboembolism risk. *Res Pract Thromb Haemost*. 2021;5:e12640. doi:[10.1002/rth2.12640](https://doi.org/10.1002/rth2.12640)