

**TITLE**

***Brucella melitensis* biovar 1 isolation in a captive wildlife population in the United Arab Emirates. First isolation in the Scimitar-horned Oryx (*Oryx dammah*)**

**RUNNING TITLE**

*Brucella melitensis* in Scimitar-horned oryx in the United Arab Emirates

Louis LIGNEREUX<sup>1,2</sup>, Anne-Lise CHABER<sup>2</sup>, David FRETIN<sup>3</sup>, Jacques GODFROID<sup>4</sup>,  
Claude SAEGERMAN<sup>1</sup>

<sup>1</sup>Faculty of Veterinary Medicine, Research Unit in Epidemiology and Risk Analysis Applied to Veterinary Sciences (UREAR-ULiège), Fundamental and Applied Research for Animals and Health (FARAH) Center, University of Liège, Liège, Belgium.

<sup>2</sup>School of Animal and Veterinary Sciences, University of Adelaide, Adelaide, SA, Australia

<sup>3</sup>Scientific Service Veterinary Bacteriology, Sciensano, Brussels, Belgium

<sup>4</sup>Department of Arctic and Marine Biology, Faculty of Biosciences, Fisheries and Economics, Tromsø, Norway.

**Corresponding authors:** Louis Lignereux (louis.lignereux@adelaide.edu.au)

**Keywords**

Brucellosis, wildlife, United Arab Emirates, *Brucella melitensis*, Scimitar-horned Oryx (*Oryx dammah*), MLVA-VNTR

## **ABSTRACT**

In 2013, *Brucella melitensis* biovar 1 was recovered from the stomach contents of a scimitar-horned Oryx - SHO (*Oryx dammah*) aborted foetus, and from the articular fluid of a sand gazelle (*Gazella marica*) in a captive wildlife collection near Abu Dhabi, United Arab Emirates. Other evidence of exposure to the pathogen was collected through serological testing (Rose Bengal test) and *B. melitensis*-specific PCR of samples from captive wildlife kept in six different enclosures. A Multiple Locus Variable Number of Tandem Repeats (VNTR) Analysis (MLVA) using 15 markers showed that the two strains isolated in animals kept in enclosures, located 1300m apart from each other, shared an identical genotype. The phylogenetic analysis of MLVA-15 profiles retrieved from the public database suggested that these strains belong to the African clade, clustering regionally in the UAE, Oman and Qatar. This is the first confirmed case of *B. melitensis* in a SHO, an African antelope extinct in the wild and warrants further investigation.

## **INTRODUCTION**

Human brucellosis or Malta fever poses a serious health hazard always associated to an animal reservoir. It is caused by small non-encapsulated non-motile, facultative intracellular Gram-negative coccobacilli, that belong to the *Brucella* genus. *Brucella melitensis*, the main causative agent for brucellosis in goat and sheep, is the main cause of human brucellosis (Young, 1995). Importantly, *Brucella melitensis* infections are also found in other farmed species, like camels (Gwida et al., 2012) and in wildlife (Dadar et al., 2021).

In the United Arab Emirates, brucellosis surveys of wildlife have been conducted in the past (Ofner et al., 2007). The disease has been documented in livestock (Mohammed et al., 2013) in a Nubian Ibex (*Capra ibex nubiana*) (Wazed Ali Mollah and McKinney, 2002), in a gazelle

(Gyuranecz et al., 2016) and in humans; between 2010 and 2015, 3.3 cases of human brucellosis /100,000 inhabitants were diagnosed yearly in the Abu Dhabi emirate (Al Shehhi et al., 2016).

The Scimitar-horned Oryx (*Oryx dammah*) (SHO) is a large Sahelian antelope that is now extinct in the wild. Global conservation efforts rely heavily on captive stocks for possible re-introduction. Such programs involve conducting wildlife disease risk analysis (Jakob-Hoff et al., 2014).

The aim of this rapid communication is to describe a first confirmed case of *B. melitensis* in SHO.

## **MATERIAL AND METHODS**

The study site was a 5km long animal holding facility constituted of more than 50 fenced enclosures (Lignereux et al., 2020) located (location: 24.219° N, 54.793° E) 45km east to Abu Dhabi, the capital city of the UAE.

The study site was populated with six different species of wild ungulates after they were translocated from a private island (location: 24.322° N, 52.598° E) in 2008. In November 2012, there were 7931 indian blackbucks (*Antelope cervicapra*), 3894 SHO, 1300 sand gazelles (*Gazella marica*), 258 mountain (*Gazella gazella*) and Indian (*Gazella bennetti*) gazelles and 11 Urial sheep (*Ovis orientalis*). Species were separated from each other, and they were all breeding within species groups.

There was no history of testing or vaccination against brucellosis and the health status was unknown. Late 2012, brucellosis was suspected due to observation of enlarged testicles and hygromas, which are external clinical signs compatible with the disease (Garin-Bastuji et al., 1998). To confirm this, animals that presented those signs were restrained (Medetomidine, 0.6mg and Ketamine, 100mg per SHO, injected remotely and intramuscularly) and euthanized

whenever their condition was detrimental to their welfare (mixture of Embutramide, Mebezonium and Tetracaine injected intravenously). Blood and testes from two males SHO, and blood and articular fluid from a male sand gazelle were collected and sent to a local veterinary laboratory to perform serological screening (RBT) and diagnostic (*Brucella melitensis*-specific PCR) tests for brucellosis. Histopathology was not performed. In addition, the RBT was also performed on blood collected from one aborted foetus and four dead newborn SHO.

Once the presence of *Brucella* was confirmed, another batch of fourteen samples consisting in different organs (SHO foetal spleen, lung, or stomach contents, or sand gazelle articular fluid) was collected randomly and aseptically in different enclosures in November and December 2013 from dead animals. They were sent under controlled temperature to Sciensano (ex. CODA-CERVA), Belgium for culture and biotyping using classical procedures described elsewhere (Alton et al., 1988).

The genotyping analysis was performed by Multiple Locus Variable Number of Tandem Repeats (VNTR) Analysis (MLVA) using 15 markers as described in (Le Flèche et al., 2006). Those markers were divided in three panels: 1, 2A and 2B, with eight, two and five microsatellites, respectively. Band sizes of tandem repeat units longer than 600pb were analysed on a 2% agarose gel. The remaining PCR products were analysed by capillary electrophoresis in a CEQ 8000 automatic DNA Analysis System (Beckman-Coulter) using a commercial kit (GenomeLab™ DTCS-Quick Start Kit, Beckman-Coulter) according to the manufacturer' instructions. Band size and peak numbers were converted to number of units using the *B. melitensis* 16M reference strain (ATCC 23456) (Le Flèche et al., 2006).

*Brucella melitensis* alleles profiles were retrieved from the public database MLVA Bank (<http://mlva.u-psud.fr/mlvav4/genotyping/index.php>) as well as from the literature. The genotypes of all the *B. melitensis* strains isolated in Africa, the Middle East and Asia were

included in our analysis (Garofolo et al., 2016; Georgi et al., 2017; Gopaul et al., 2014; Gyuranecz et al., 2016; Le Flèche et al., 2006; Menshawy et al., 2014; Mustafa et al., 2017; Osman et al., 2015; Schulze zur Wiesch et al., 2010; Tiller et al., 2009; Vergnaud et al., 2018). A total of 2729 profiles, including our profile, were then imported to Excel (Microsoft, USA) for sorting and cleaning. Loci with incomplete or missing information were not used. The columns presenting values for panel 1, 2A and 2B were copied 10, five and one time to increase their respective weight in the hierarchical analysis performed with PHYLOViZ 2.0 software (Francisco et al., 2012). The phylogenetic tree was constructed using the Unweighted Pair-Group Method with Arithmetic mean (UPGMA) algorithm.

## **RESULTS and DISCUSSION**

Similarly to observations made during a brucellosis outbreak in Dorcas gazelles, (*Gazella dorcas*) (Wieckowski, 2017) and sable antelope (*Hippotragus niger*) (Glover et al., 2020), hygromas, i.e. distension of the tibio-tarsal and metacarpo/tarso-phalangeal joints were observed in sand gazelles (**Figure 1-B**). The presence of hygroma motivated the sampling of one adult male which elicited a positive RBT on serum and a positive *B.melitensis*-specific PCR result on articular fluid collected from the hygroma. Reluctance to move and loss of body condition possibly contributing to death were observed in gazelles.

On November 13, 2013, the carpometacarpal joint synovial fluid collected on another sand gazelle provided a positive culture (with only one colony seen) of *B. melitensis* biovar 1, followed two weeks later by another positive culture performed on the stomach contents of an aborted SHO and in an enclosure located 1300m away from the gazelle.

In SHO, the clinical picture contrasted from what was observed in gazelles, and was more comparable to lesions described in sheep (Garin-Bastuji et al., 1998), goat (Poester et al., 2013)

or alpine ibex (Mick et al., 2014). The uni- or bilateral testicular enlargement triggered the decision to sample the two SHO which appeared otherwise in excellent body condition (**Figure 1-A**). The affected testicle(s) had undergone important gross lesions with distension due to a caseous purulent material replacing the seminal tissue and separated by thickened septa (**Figure 1-E and F**). Positive *B.melitensis*-specific PCR results were obtained from the testicular tissues of both animals.

Out of the one aborted SHO foetus and the four dead newborns collected on a single day, the foetus and one newborn were positive to the RBT. None of the four newborns had a stomach content compatible with colostral intake, limiting the transfer of maternal immunity.

The isolation of *B.melitensis* from the stomach content of an aborted foetus (**Figure 1-C**) reveals the transplacental transmission of the pathogen already reported in sheep (Grilló et al., 1997).

Females SHO did not exhibit obvious external signs and we find no particular external signs were observed in Indian blackbucks from both sexes.

The two isolates showed an identical MLVA-15 profile (**Appendix**) not described in the MLVA databank. This illustrates the clonal expansion of the bacteria usually observed during brucellosis outbreaks (Dorneles et al., 2014) and suggests a unique origin. They clustered with the genotype of strains previously isolated from the region and belonging to the African cluster (**Figure 2**).

The phylogenetically most closely related strains were isolated from goats sampled in the UAE (Le Flèche et al., 2006) and Oman (Vergnaud et al., 2018) and another closely related strain was isolated from a sand gazelle in Abu Dhabi (Gyuranecz et al., 2016). Four strains recovered

previously in the UAE from “Sudanese” camels (Gyuranecz et al., 2016) clustered with the strains isolated during this study. Together these strains constitute a cluster coherent with geographical data and limited to Oman, UAE and Qatar.

This study documents the presence of *Brucella melitensis* in at least two species and six enclosures in this wildlife collection. We suggest integrating brucellosis in wildlife disease risk assessment associated with possible reintroduction programs of those species. An effort to limit the risk of transmission to humans and the spread to neighbouring livestock farms should be initiated. Our study highlights the gap in our knowledge in brucellosis and its pathobiology in different wildlife of high conservation value.

## **ACKNOWLEDGMENTS**

The authors would like to thank the Environment Agency - Abu Dhabi (EAD) and the Ministry of Climate Change and Environment (MOCCA) of the UAE for their support.

## **CONFLICT OF INTEREST STATEMENT**

The authors declared that they have no conflict of interest.

## **ETHICS STATEMENT**

The animal collection health management provided the data presented in this study and this work was not performed primarily for research purposes.

## **REFERENCES**

- Al Shehhi, N., Aziz, F., Al Hosani, F., Aden, B., & Blair, I. (2016). Human brucellosis in the Emirate of Abu Dhabi, United Arab Emirates, 2010–2015. *BMC Infectious Diseases*, *16*. <https://doi.org/10.1186/s12879-016-1900-9>
- Alton, G. G., Jones, L. M., Angus, R., Verger, J., & others. (1988). *Techniques for the brucellosis laboratory*. Institut National de la recherche Agronomique (INRA).
- Dadar, M., Shahali, Y., Fakhri, Y., & Godfroid, J. (2021). The global epidemiology of Brucella infections in terrestrial wildlife: A meta-analysis. *Transboundary and Emerging Diseases*, *68*(2), 715–729. <https://doi.org/10.1111/tbed.13735>
- Dorneles, E. M. S., Santana, J. A., Alves, T. M., Pauletti, R. B., da Silva Mol, J. P., Heinemann, M. B., & Lage, A. P. (2014). Genetic stability of Brucella abortus isolates from an outbreak by multiple-locus variable-number tandem repeat analysis (MLVA16). *BMC Microbiology*, *14*(1), 1–8.
- Francisco, A. P., Vaz, C., Monteiro, P. T., Melo-Cristino, J., Ramirez, M., & Carriço, J. A. (2012). PHYLOViZ: Phylogenetic inference and data visualization for sequence based typing methods. *BMC Bioinformatics*, *13*(1), 87. <https://doi.org/10.1186/1471-2105-13-87>
- Garin-Bastuji, B., Blasco, J. M., Grayon, M., & Verger, J. M. (1998). Brucella melitensis infection in sheep: Present and future. *Veterinary Research*, *29*(3–4), 255–274.
- Garofolo, G., Fasanella, A., Di Giannatale, E., Platone, I., Sacchini, L., Persiani, T., Boskani, T., Rizzardi, K., & Wahab, T. (2016). Cases of human brucellosis in Sweden linked to Middle East and Africa. *BMC Research Notes*, *9*(1), 277. <https://doi.org/10.1186/s13104-016-2074-7>
- Georgi, E., Walter, M. C., Pfalzgraf, M.-T., Northoff, B. H., Holdt, L. M., Scholz, H. C., Zoeller, L., Zange, S., & Antwerpen, M. H. (2017). Whole genome sequencing of Brucella melitensis isolated from 57 patients in Germany reveals high diversity in



- strains from Middle East. *PLOS ONE*, 12(4), e0175425.  
<https://doi.org/10.1371/journal.pone.0175425>
- Glover, B., Macfarlane, M., Bengis, R., O'Dell, J., Steyl, J., van Heerden, H., & Abernethy, D. (2020). Investigation of *Brucella melitensis* in Sable Antelope (*Hippotragus niger*) in South Africa. *Microorganisms*, 8(10), 1494.  
<https://doi.org/10.3390/microorganisms8101494>
- Gopaul, K. K., Dainty, A. C., Muchowski, J. K., Dawson, C. E., Stack, J. A., & Whatmore, A. M. (2014). Direct molecular typing of *Brucella* strains in field material. *Veterinary Record*, 175(11), 282.2-282. <https://doi.org/10.1136/vr.102674>
- Grilló, M. J., Barberán, M., & Blasco, J. M. (1997). Transmission of *Brucella melitensis* from sheep to lambs. *Veterinary Record*, 140(23), 602–605.  
<https://doi.org/10.1136/vr.140.23.602>
- Gwida, M., El-Gohary, A., Melzer, F., Khan, I., Rösler, U., & Neubauer, H. (2012). Brucellosis in camels. *Research in Veterinary Science*, 92(3), 351–355.  
<https://doi.org/10.1016/j.rvsc.2011.05.002>
- Gyuranecz, M., Wernery, U., Kreizinger, Z., Juhász, J., Felde, O., & Nagy, P. (2016). Genotyping of *Brucella melitensis* strains from dromedary camels (*Camelus dromedarius*) from the United Arab Emirates with multiple-locus variable-number tandem repeat analysis. *Veterinary Microbiology*, 186, 8–12.  
<https://doi.org/10.1016/j.vetmic.2016.02.009>
- Jakob-Hoff, R. M., Kock, R., Lees, C., MacDiarmid, S. C., Miller, P. S., & Travis, D. (2014). *Manual of procedures for wildlife disease risk analysis*. World Organization for Animal Health (OIE) Published in association with the International Union for Conservation of Nature (IUCN) and the Species Survival Commission (SSC).

- Le Flèche, P., Jacques, I., Grayon, M., Al Dahouk, S., Bouchon, P., Denoeud, F., Nöckler, K., Neubauer, H., Guilloteau, L. A., & Vergnaud, G. (2006). Evaluation and selection of tandem repeat loci for a Brucella MLVA typing assay. *BMC Microbiology*, 6(1), 9. <https://doi.org/10.1186/1471-2180-6-9>
- Lignereux, L., Chaber, A.-L., Saegerman, C., Heath, L., Knowles, N. J., Wadsworth, J., Mioulet, V., & King, D. P. (2020). Foot-and-mouth disease outbreaks in captive scimitar-horned oryx (*Oryx dammah*). *Transboundary and Emerging Diseases*. <https://doi.org/10.1111/tbed.13502>
- Menshawy, A. M. S., Perez-Sancho, M., Garcia-Seco, T., Hosein, H. I., García, N., Martinez, I., Sayour, A. E., Goyache, J., Azzam, R. A. A., Dominguez, L., & Alvarez, J. (2014). Assessment of Genetic Diversity of Zoonotic Brucella spp. Recovered from Livestock in Egypt Using Multiple Locus VNTR Analysis. *BioMed Research International*, 2014, 1–7. <https://doi.org/10.1155/2014/353876>
- Mick, V., Carrou, G. L., Corde, Y., Game, Y., Jay, M., & Garin-Bastuji, B. (2014). Brucella melitensis in France: Persistence in Wildlife and Probable Spillover from Alpine Ibex to Domestic Animals. *PLOS ONE*, 9(4), e94168. <https://doi.org/10.1371/journal.pone.0094168>
- Mohammed, M. A., Shigidy, M. T., & Al juboori, A. Y. (2013). Sero-prevalence and epidemiology of brucellosis in camels, sheep and goats in Abu Dhabi emirate. *International Journal of Animal and Veterinary Advances*, 5(2), 82–86. <https://doi.org/10.19026/ijava.5.5581>
- Mustafa, A. S., Habibi, N., Osman, A., Shaheed, F., & Khan, M. W. (2017). Species identification and molecular typing of human Brucella isolates from Kuwait. *PLOS ONE*, 12(8), e0182111. <https://doi.org/10.1371/journal.pone.0182111>

- Ofner, W., Bailey, T., O'Donovan, D., Wernery, U., & Zachariah, R. (2007). Absence of antibodies against *Brucella* sp. in different species of semi free-ranging bovidae in the Emirate of Dubai, United Arab Emirates. *Veterinary Medicine Austria / Wiener Tierärztliche Monatsschrift*, *94*, 180–183.
- Osman, A. E. F., Hassan, A. N., Ali, A. E., Abdoel, T. H., & Smits, H. L. (2015). *Brucella melitensis* Biovar 1 and *Brucella abortus* S19 Vaccine Strain Infections in Milkers Working at Cattle Farms in the Khartoum Area, Sudan. *PLOS ONE*, *10*(5), e0123374. <https://doi.org/10.1371/journal.pone.0123374>
- Poester, F. P., Samartino, L. E., & Santos, R. L. (2013). Pathogenesis and pathobiology of brucellosis in livestock. *Revue Scientifique Et Technique (International Office of Epizootics)*, *32*(1), 105–115. <https://doi.org/10.20506/rst.32.1.2193>
- Schulze zur Wiesch, J., Wichmann, D., Sobottka, I., Rohde, H., Schmooch, G., Wernery, R., Schmiedel, S., Dieter Burchard, G., & Melzer, F. (2009). Genomic Tandem Repeat Analysis Proves Laboratory-Acquired Brucellosis in Veterinary (Camel) Diagnostic Laboratory in the United Arab Emirates. *Zoonoses and Public Health*, *57*(5), 315–317. <https://doi.org/10.1111/j.1863-2378.2009.01258.x>
- Tiller, R. V., De, B. K., Boshra, M., Huynh, L. Y., Ert, M. N. V., Wagner, D. M., Klena, J., Mohsen, T. S., El-Shafie, S. S., Keim, P., Hoffmaster, A. R., Wilkins, P. P., & Pimentel, G. (2009). Comparison of Two Multiple-Locus Variable-Number Tandem-Repeat Analysis Methods for Molecular Strain Typing of Human *Brucella melitensis* Isolates from the Middle East. *Journal of Clinical Microbiology*, *47*(7), 2226–2231. <https://doi.org/10.1128/JCM.02362-08>
- Vergnaud, G., Hauck, Y., Christiany, D., Daoud, B., Pourcel, C., Jacques, I., Cloeckert, A., & Zygmunt, M. S. (2018). Genotypic expansion within the population structure of classical *Brucella* species revealed by MLVA16 typing of 1404 *Brucella* isolates from

different animal and geographic origins, 1974–2006. *Frontiers in Microbiology*, 9.  
<https://doi.org/10.3389/fmicb.2018.01545>

Wazed Ali Mollah, M., & McKinney, P. (2002). Brucellosis and suspected paratuberculosis in a nubian ibex (*Capra ibex nubiana*)-a case report. *Proceedings of the World Association of Wildlife Veterinarians Wildlife Sessions at the 27th World Veterinary Congress in Tunisia*. <http://wmenews.com/Information/Other/Section1Wazedpp19-22pdf1.pdf>

Wieckowski, T. (2017). *Brucella melitensis* infection in dorcas gazelles (*Gazella dorcas*) in isolated semi free range zoological collection in the UAE. 170–174.

Young, E. J. (1995). An Overview of Human Brucellosis. *Clinical Infectious Diseases*, 21(2), 283–290. <https://doi.org/10.1093/clinids/21.2.283>

## CAPTIONS

### **Figure 1. Brucellosis gross lesions in the wildlife collection**

A: adult male scimitar-horned Oryx (SHO) presenting a bilateral testicular enlargement; B: sand gazelles with distended joints (arrows). Note the poor body condition of the affected gazelles; C: aborted and dead newborn SHO; Picture E: enlarged testicle of a Rose Bengal test positive SHO; F: same testicle after sagittal cut and content left in place. Note the size of the contralateral testicle in the upper left corner; G: the same testicle after removal of the caseous purulent material to visualise the thickened *septa testis*. The contralateral testicle is cut in half for comparison. The same scale is used for pictures D, E and F. The bar represents 5cm.

### **Figure 2. Cluster analysis based on UPGMA phylogenetic tree inferred from 2729 *Brucella melitensis***

Legend: On the left, a detail of the overall tree showing the cluster (red box) to which our two isolates belong. On the right, this cluster (with country of origin, host, reference). A different

colour represents each country of origin. † : Origin of the host as mentioned in the referenced paper. ‡: The host originated from Sudan but brucellosis was diagnosed in the U.A.E.

**Appendix: MLVA 15 profiles of the two *Brucella melitensis* isolates**

Figure 1

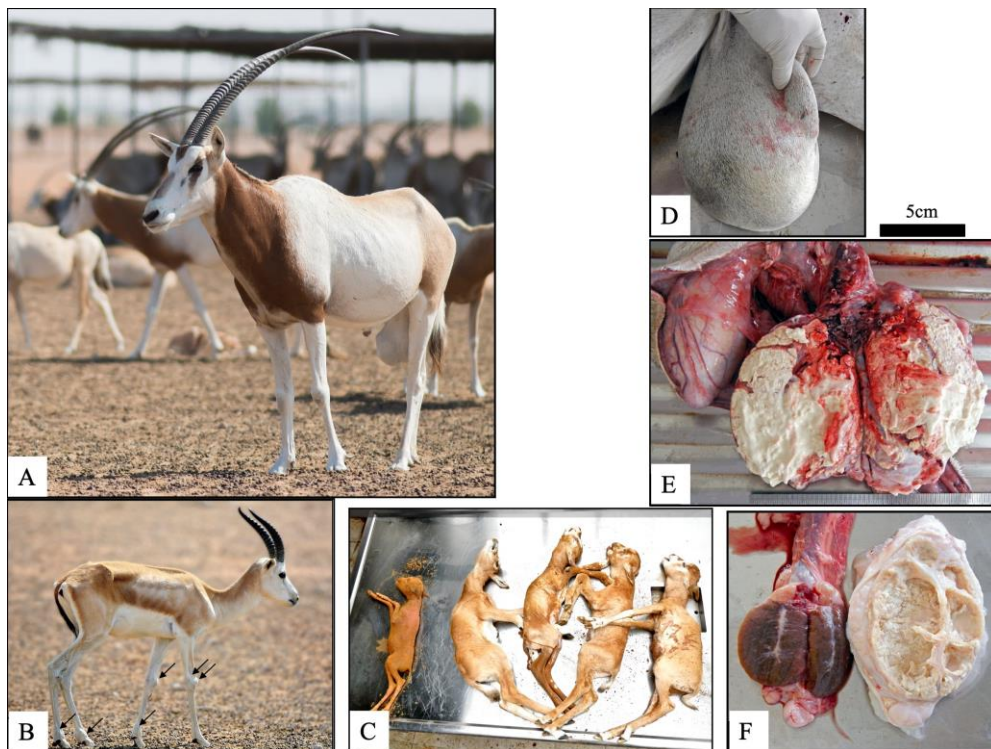


Figure 2

