

RESEARCH ARTICLE

Open Access

Survival on antiretroviral treatment among adult HIV-infected patients in Nepal: a retrospective cohort study in far-western Region, 2006–2011

Laxmi Bhatta^{1*}, Elise Klouman¹, Keshab Deuba², Rachana Shrestha³, Deepak Kumar Karki⁴, Anna Mia Ekstrom⁵ and Luai Awad Ahmed⁶

Abstract

Background: Though financial and policy level efforts are made to expand antiretroviral treatment (ART) service free of cost, survival outcome of ART program has not been systematically evaluated in Nepal. This study assesses the mortality rates and determinants among adult HIV-infected patients on ART in Far-western region of Nepal.

Methods: This retrospective cohort study included 1024 (51.2% men) HIV-infected patients aged ≥ 15 years, who started ART between May 15th 2006 and May 15th 2011 in five ART sites in the Far-western region, Nepal. Follow-up time was calculated from the date of ART initiation to date of death or censoring (loss to follow-up, transferred out, or 15 November 2011). Mortality rates (per 100 person-years) were calculated. Kaplan-Meier and Cox-regression models were used to estimate survival and explore determinants of mortality.

Results: The median follow-up time was 19.1 months. The crude mortality rate was 6.3 (95% confidence interval (CI) 5.3-7.6) but more than three-times higher in first 3 months after ART initiation (21.9 (95% CI 16.6- 28.8)). About 12% (83% men) of those newly initiated on ART died during follow-up. The independent determinants of mortality were male sex (hazard ratio (HR) 4.55, 95% CI 2.43-8.51), poor baseline performance scale (bedridden <50% of the day during the past month, HR 2.05, 95% CI 1.19-3.52; bedridden >50% of the day during the past month, HR 3.41, 95% CI 1.67-6.98 compared to normal activity), one standard deviation decrease in baseline bodyweight (HR 1.04, 95% CI 1.01-1.07), and poor WHO clinical stage (stage III, HR 2.96, 95% CI 1.31-6.69; stage IV, HR 3.28, 95% CI 1.30-8.29 compared to WHO clinical stage I or II).

Conclusions: High mortality was observed within the first 3 months of ART initiation. Patients with poor baseline clinical characteristics had higher mortality, especially men. Earlier initiation of ART through expanded testing and counselling should be encouraged in HIV-infected patients.

Keywords: HIV, Antiretroviral treatment (ART), Mortality, Determinants, Far-western region, Nepal, Asia

Background

It has been estimated that antiretroviral treatment (ART) has averted 300,000 HIV-related deaths in Asia [1]. Although it is well established that ART reduces mortality and prevent opportunistic infection among HIV patients in high-income countries and in generalized epidemics in Africa, mortality rates and mortality determinants among ART-recipients in countries with concentrated epidemics

in the South Asian region have not been well-covered [2-6]. There is reason to believe that there are large regional variations in terms of treatment outcomes due to poor access to services in particular among most at risk of HIV-infection and minority populations with stigmatized risk behaviours [4,7,8].

Nepal is among the poorest countries in the world and health programs, especially HIV programs are heavily donor dependent [7]. Nepal has a concentrated HIV epidemic with a low estimated HIV prevalence of 0.30% among adults (15–49 years) in the general population but over 5-fold higher rates among populations at higher

* Correspondence: lax_b1@yahoo.com

¹Department of Community Medicine, Faculty of Health Sciences, University of Tromsø, Tromsø, Norway

Full list of author information is available at the end of the article

risk including male labour migrants (particularly to India where they often visit sex workers), men who have sex with men, female sex workers, people who inject drugs [7,9]. These population groups are considered important bridging populations for HIV transmission between high-risk and low-risk shares of the populations [7,10].

Since the introduction of free ART services in Nepal in 2004 with a primary aim to reduce mortality among HIV-infected patients, there have been improvements in service delivery and utilization. In addition to the free-of-cost highly affective antiretroviral therapy, HIV-infected patients are offered care package including clinical follow-up monitoring, TB screening and Isoniazid preventive therapy, and community and home-based care (CHBC), which includes primary care of patients by trained CHBC workers at homes and community settings aiming for positive living, reducing stigma and discrimination if any, and supporting for sanitation and hygiene, continuity and adherence to ART. Moreover, medical, nutritional, psychosocial, legal support is provided by CHBC, and in addition financial support is provided to newly enrolled patients by community care centers nearby ART sites [11,12]. However, the ART coverage of people eligible to treatment is still low despite a doubling from 10% in 2007 to 24% of those in need (having a CD4 count <350 cells/mm³) in 2011 [9,13]. No previous systematic review has been done in Nepal, but it is needed to better understand the most important determinants of mortality among patients initiated on ART in order to identify those at the highest risk of preventable death. This cohort study explores the mortality rates and determinants among all known ART patients in one of the five development regions of Nepal, the Far-western region, in a thorough retrospective assessment including the most recent available data since the start of ART in this area, i.e. from 2006 to 2011.

Methods

Study setting

The Far-western region (population 2.5 million [14]) is a remote and developmentally challenged region of Nepal [15]. There are seven ART sites in the Far-western region of Nepal. All the ART sites in the region are run by government hospitals except Bayalpata hospital in Achham district that is run by a non-governmental organization. Five ART sites (Seti Zonal Hospital and Tikapur Hospital, Kailali district; Mahakali Zonal Hospital, Kanchanpur district; Achham District Hospital, Achham district; Doti District Hospital, Doti district) in the region have treatment initiation capabilities, while two ART sites (Baitadi District Hospital, Baitadi district; Bayalpata Hospital, Achham district) only offer treatment follow-up for transferred-in HIV-positive patients who were tested and started the treatment at other ART sites

within or outside the region. Patients were transferred to these two sites in order to ease their access to treatment near their place of residence. These two sites were ineligible for this study due to lack or incomplete baseline information and ART initiation date.

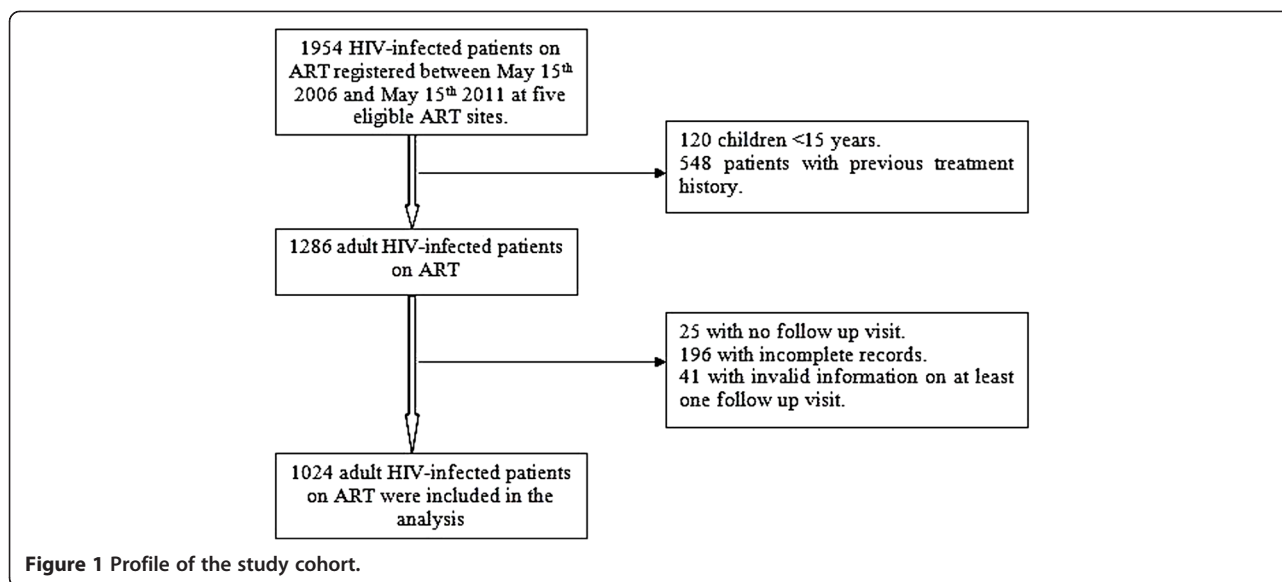
Study population

The study population consisted of all adult HIV-infected patients (15 years of age and older) on ART, who started the treatment between May 15th 2006 (first recipient recorded in ART site of Far-western region) and May 15th 2011 at any of the five eligible ART sites in the Far-western region. All patients with history of previous treatment, and children aged 0–14 years -as defined by the National Centre for AIDS and STD control (NCASC), Ministry of Health and Population (MoHP), Nepal [9] were excluded from the study. The total eligible population was 1286 adult HIV-infected patients and they were followed-up with respect to death until 15 November 2011 (Figure 1).

Data collection and study variables

Data were collected from standard medical record registers at ART sites adopted by the NCASC, Nepal. There were three available registers. The first register was the Pre-ART register where all confirmed HIV-positive clients who visit ART site were registered. Then, all the patients who started ART regimen were transferred to an ART register at the date of treatment initiation. The third register was patient's follow-up form. For every patient, the first follow-up visit was scheduled two weeks after treatment initiation and then on a monthly basis, where medical records were updated for every patient during each follow-up visit. Data collection approval was obtained from all ART sites. Confidentiality and anonymity of data was maintained during data collection. Ethical approval was obtained from the Nepal Health Research Council (NHRC), Kathmandu, Nepal.

Patients' baseline demographic and clinical characteristics data were collected. Baseline demographic characteristics included place of ART site, age (in years), sex, and education. Clinical characteristics at the time of ART initiation included performance scale, bodyweight (kg), World Health Organization (WHO) clinical stage, CD4 count (cells/mm³), ART regimen, drug toxicity/side effects, and active tuberculosis (TB) during treatment. Performance scale was categorized and recorded into three groups: normal activity, bedridden $<50\%$ of the day during the past month, bedridden $>50\%$ of the day during the past month [16]. The clinical stage of the HIV-infected patient was assessed and recorded using the WHO clinical stage guidelines [16] based on load of clinical symptoms and infections reported by the health professionals at ART sites. The WHO clinical stage was categorized into four groups (stage I, stage II, stage III,



and stage IV), where stage IV is considered as the worst health condition [16]. The first line ART regimens in adults and adolescent are ZDV/3TC/NVP, ZDV/3TC/EFV, d4T/3TC/NVP, d4T/3TC/EFV, TDF/3TC/NVP, and TDF/3TC/EFV. In case of treatment failure, it is recommended to change to second line combination regimen. The second line regimens in adults and adolescent are TDF + 3TC + LVP/r and ZDF + 3TC + LVP/r [16].

The date of death was recorded for all HIV-infected patients, who died from all causes during the study period while on antiretroviral treatment. Patients missing their follow-up visits for more than 3 months were counted as loss to follow-up and the date of the last registered follow-up visit was recorded as date of loss to follow-up. ART using HIV-infected patient, who were transferred to another ART site, were recorded as transferred-out cases and their dates of transferred-out were also recorded.

Data analysis

Adult HIV-infected patients who had no follow-up visits ($n = 25$) and, patients without date of ART initiation and date of occurrence of events (i.e. death, loss to follow up, and transferred out) ($n = 196$) were excluded from study. An additional 41 patients were excluded due to invalid follow-up information on at least one follow-up visit (for example, transferred out date earlier than first follow-up visit date). A total of 1024 adult HIV-infected patients were included in the present analysis (Figure 1).

Follow-up time (in months) was calculated from the date of ART initiation to the date of death or censoring (loss to follow-up, transferred out, or 15 November 2011). Kaplan-Meier (KM) models were used to estimate survival probability after ART initiation. All the baseline

demographic and clinical characteristics were used as independent variables in the analysis. Proportional hazard assumption was assessed and all the independent variables satisfied the assumption. The Cox-proportional hazard model was used to assess the relationship between the independent variables and mortality. The univariate Cox-regression analysis was used to estimate the unadjusted Hazard Ratios (HRs), and the stepwise (backward LR) multivariate Cox-regression analysis (including all independent variables) was performed to estimate the adjusted hazard ratios. The probability for the stepwise regression was 0.05 for entry of the variables and 0.10 for removal of the variables from model. All the tests were two-sided and the criterion for statistical significance was set at $p < 0.05$. A worst-case-scenario analysis was performed assuming all lost to follow-up patients were dead immediately after the last date of contact. Data were analysed using the statistical software STATA version 12.0 and SPSS version 16.0.

Results

Among the 1024 adult HIV-infected patients, 14 (1.4%) were lost to follow-up, 198 (19.3%) were transferred-out to other ART site within Far-western region or outside the region, 120 (11.7%) died, and 692 (67.6%) were still alive by the 15 November 2011. Among 120 patients who died, 51 (42.5%) died within 3 months after start of treatment. There was inadequate information regarding the causes of deaths among adult HIV-infected patients on ART.

The overall median follow-up time of all the patients was 19.1 months or 1.6 years (Interquartile range 0.6 – 2.9 years). The median follow-up time of the deceased (3.6 months) and lost to follow-up patients (13.2 months)

was lower than median follow-up time of survivors (29.5 months). The overall survival probability among adult HIV-infected patients declined over follow-up time (Figure 2). The survival probability of patients at 3 month, 6 month, 1 year, 2 year, and at 5 year was 94.7%, 91.4%, 89.7%, 86.5% and 82.9% respectively.

The study cohort contributed a total of 1895 person-years of follow-up. The total mortality rate was 6.3 per 100 person-years at risk. The mortality rate was highest in the first three months after ART initiation (21.9 per 100 person-years (95% CI 16.6-28.8)) (Table 1).

The baseline demographic and clinical characteristics of adult HIV-infected patients on ART are summarized in Table 2. The median age of the patients at start of ART was 35 years (Interquartile range 30–42 years), and male patients constitute 51.2% of the total sample size. About 1 out of 11 patients were bedridden for >50% of the day during the past month. The median baseline bodyweight was 45 kg (Interquartile range 40–50). The median baseline CD4 count was 149 cells/mm³ (Interquartile range was 80–210). About 17% of patients were in WHO clinical stage IV, where one out of four died. The proportions of deaths varied between the ART sites (*p*-value for χ^2 test was 0.001).

Table 3 shows the hazard ratios from the univariate and multivariate analysis of the association between the possible determinants of mortality and risk of death. In univariate analysis, place of ART site, sex, age, baseline performance scale, bodyweight, WHO clinical stage, CD4 count, active TB during treatment, and ART regimen had statistically significant relation with the mortality in adult HIV-infected patients.

However, in the multivariate analysis, only sex, baseline performance scale, bodyweight, and WHO clinical stage were independent significant determinants of mortality.

The risk of death increased 4.6-fold (95% CI: 2.43- 8.51) in male compared to female patients. Patients with baseline performance scale of bedridden <50% were two times more likely to die compared to patients with normal performance scale at start of treatment (HR 2.05; 95% CI: 1.19- 3.52). However, the risk of mortality increased 3.4 times when the patients had baseline performance scale of bedridden >50% compared to patients with normal baseline performance scale (HR 3.41; 95% CI: 1.67- 6.98). For each kilogram decrease in baseline bodyweight, the risk of mortality increased by 4% (HR 1.04; 95% CI: 1.01- 1.07). HIV-infected patients with WHO clinical stage III had 3-fold increased risk of death compared to patients with stage I or II (HR 2.96; 95% CI: 1.31- 6.69), and the risk of death among WHO clinical stage IV patients was even higher- compared to stage I or II patients (HR 3.28; 95% CI: 1.30- 8.29).

In stepwise (backward LR) multivariate analysis, categorizing baseline CD4 count (into three groups: ≤ 50 cells/mm³, 51–200 cells/mm³, and >200 cells/mm³) and place of ART site (into two groups: Hill district (Doti district and Achham district) and Plain/Terai district (Kailali district and Kanchanpur district)) showed no statistical significant relation with mortality among adult HIV-infected patients on ART (*data not shown*).

Discussion

This 5-year retrospective cohort study showed high mortality within 3 months of ART initiation among HIV-infected patients in Nepal. The major independent determinants of mortality among adult HIV-infected patients on ART were male sex, poor baseline performance scale, low baseline bodyweight, and worse baseline WHO clinical stage.

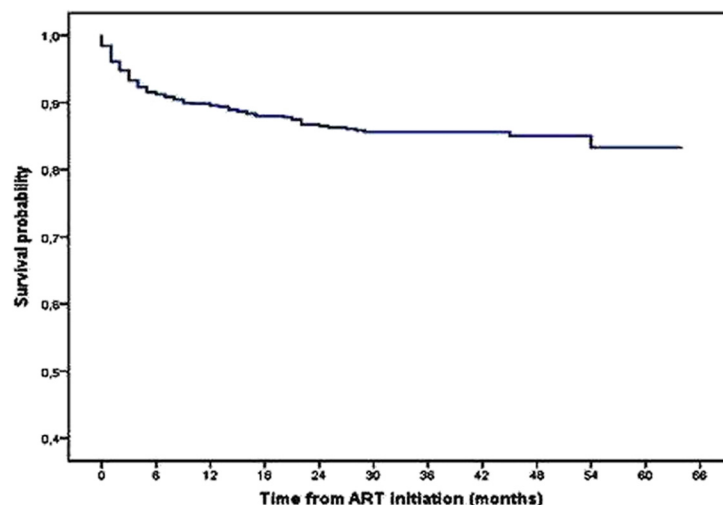


Figure 2 Kaplan-Meier survival curve of 1024 adult HIV-infected patients on ART.

Table 1 Mortality rates (per 100 person-years) of HIV-infected patients over different follow-up time intervals

Follow-up time intervals	Mortality rate per 100 person-years at risk (95% CI) (N = 1024)
0 – 3 months	21.9 (16.6 – 28.8)
0 – 6 months	18.2 (14.6 – 22.6)
0 – 1 year	11.9 (9.7 – 14.5)
0 – 2 years	8.5 (7.1 – 10.3)
0 – 5 years	6.3 (5.3 – 7.6)
Over the study period	6.3 (5.3 – 7.6)

N = total number of patients.

In this study, 11.7% of the adult HIV-infected patients on ART died, similar with the overall deaths (11.8%) on ART program in Nepal by July 2011 [13]. The causes of deaths were not investigated in this study; however, it is well known that opportunistic infections (OIs) are the major causes of mortality among HIV-infected patients. In Nepal, the most prevalent OIs among HIV-infected patients are tuberculosis, candidiasis and cryptosporidiosis [17,18].

The overall mortality in this study is quite higher than in high-income [19], but in line with low-income countries [6,20]. This could indicate poor ART program initiatives and low coverage of the program in Nepal. Similar to other studies [5,6,21], the first 3 months mortality after ART initiation was the highest. The poor outcome in the first few months after ART initiation might be due to delayed diagnosis and/or treatment and explained by the fact that 70.7% patients had advanced disease (CD4 count ≤ 200 cells/mm³) and 65.7% patients had advanced clinical symptoms (WHO clinical stage III or IV) at the time of treatment initiation. Some factors such as stigma and discrimination related to HIV [10], limited availability and access to HIV testing and counseling (HTC) and ART services in most areas might have played role in delayed diagnosis and/or treatment. Moreover, lack of proper screening of OIs, limited availability of prophylaxis and diagnostic facility of OIs might also have increased the mortality [20,22]. Advanced clinical stage (stage IV) is strongly associated with high mortality during the first months of treatment [23].

The variations in the mortality rates across different countries indicate that effectiveness of ART to reduce the mortality and increase the survival among HIV-infected patients could depend on the adherence, quality of service, and characteristics of patients [4,24].

In Nepal, male HIV-infected patients reported through HTC by July 2012 were double than female [25]. However, the proportion of male ART receivers was only 10% more than female in Nepal [26]. This indicates that female patients tend to enrol more frequently in ART service than

Table 2 Baseline demographic and clinical characteristics of 1024 patients on ART

Characteristics	Number of patients (%) ^a	Number of deaths (%) ^b
Sex		
Female	500 (48.8%)	21 (4.2%)
Male	524 (51.2%)	99 (18.9%)
Age (years)		
15 – 32 years	338 (33.0%)	27 (8.0%)
33 – 40 years	401 (39.2%)	52 (13.0%)
>40 years	285 (27.8%)	41 (14.4%)
Education		
Illiterate	650 (73.5%)	69 (10.6%)
Literate	234 (26.5%)	35 (15.0%)
Missing data	140 (13.6%)	
Baseline performance scale		
Normal	732 (73.1%)	45 (6.1%)
Bedridden <50%	182 (18.2%)	44 (24.2%)
Bedridden >50%	87 (8.7%)	28 (32.2%)
Missing data	23 (2.2%)	
Baseline bodyweight (kg)		
< 45 Kg	484 (49.1%)	58 (12.0%)
45 – 60 Kg	479 (48.6%)	49 (10.2%)
>60 Kg	23 (2.3%)	2 (8.7%)
Missing data	38 (3.7%)	
Baseline WHO clinical stage		
Stage I or II	320 (34.2%)	10 (3.1%)
Stage III	455 (48.6%)	63 (13.8%)
Stage IV	161 (17.2%)	41 (25.5%)
Missing data	88 (8.6%)	
Baseline CD4 count (cells/mm³)		
≤ 50 cells/mm ³	127 (13.6%)	19 (15.0%)
51- 200 cells/mm ³	533 (57.1%)	69 (13.0%)
>200 cells/mm ³	274 (29.3%)	14 (5.1%)
Missing data	90 (8.8%)	
Drug toxicity/side effects		
No	788 (80.9%)	83 (10.5%)
Yes	186 (19.1%)	31 (16.7%)
Missing data	50 (4.9%)	
Active TB during treatment		
No	856 (83.6%)	89 (10.4%)
Yes	168 (16.4%)	31 (18.5%)
Baseline ART regimen[#]		
d4T/3TC/NVP	151 (14.8%)	26 (17.2%)
d4T/3TC/EFV	44 (4.3%)	7 (16.0%)
ZDV/3TC/NVP	702 (69.0%)	64 (9.1%)
ZDV/3TC/EFV	118 (11.6%)	20 (17.0%)

Table 2 Baseline demographic and clinical characteristics of 1024 patients on ART (Continued)

TDF/3TC/EFV	3 (0.3%)	0
Missing data	6 (0.6%)	
Baseline ART regimen change		
No	760 (74.2%)	78 (10.3%)
Yes	264 (25.8%)	42 (16.0%)
ART centre/sub centre		
Seti Zonal hospital	590 (57.6%)	51 (8.6%)
Kanchanpur Zonal hospital	70 (6.8%)	13 (18.6%)
Achham District hospital	176 (17.2%)	24 (13.6%)
Doti district hospital	176 (17.2%)	32 (18.2%)
Tikapur hospital	12 (1.2%)	0

^acolumn percentage (missing data was excluded);

^brow percentage;

[#]all regimen were first line ART regimen.

Note: missing data refers to incomplete/missing recorded characteristics of patients.

men, and they would have early initiation of treatment due to the linkage between the community-based prevention of mother-to-child transmission (CB-PMTCT) and treatment and care program. Taking PMTCT service through community level had dramatically increased its utilization by pregnant mothers and it might have effectively encouraged females to get to know their HIV status and start early treatment through awareness and counseling services [27,28].

This study showed that male adult HIV-infected patients had higher risk of mortality and this is similar to several [4,5,24], but not all previous studies [20,21], where the latter showed no significant relationship between sex and mortality. These differences between several studies might be due to differences in accessibility and utilization of health services offered and differences in study setting explaining cultural differences. Moreover, late reporting to treatment centre unless experiencing worst HIV related symptoms might be more prevalent among male patients [24]. In Mid-and Far-western region of Nepal, the HIV prevalence is about 5% among male labor migrants [29]. The high prevalence of HIV among male labor migrants, especially in the Far-western region of Nepal is associated both with poor knowledge about HIV, stigmatized risk behaviours delaying health care seeking and poorly developed health services [29-31]. About 50% - 80% of households in some communities of Far-western region have at least one family member working in India, and most of these migrants (mainly male) especially from Doti, Achham, Kailali, and Kanchanpur districts seasonally return home [32]. These migrants are usually the economic pillars of their families and most of the time of the year they stay outside of their homes, mainly in India for work [29]. Nevertheless, stigma and discrimination, risky behaviours

(alcohol drinking), economic responsibility, guilt about going to brothels and acquiring HIV-infection when working abroad, and masculine thought of being strong and healthy might hinder them to come forward for early testing and treatment.

The association between low baseline bodyweight and mortality shown in this study is similar to several other studies, where low bodyweight or body mass index (BMI) was significantly associated with higher mortality [4,5,21,24]. Lower bodyweight is a proxy indicator of advanced disease (low CD4 and worst clinical stage) and risk factor of opportunistic infections like TB [24,33]. Malnutrition, poor immunity, and poor living standards, which are associated with low bodyweight, could also be responsible for the increased risk of mortality.

Adult HIV-infected patients who were bedridden for <50% or >50% of the days during the past month had higher risk of mortality compared to the patients with normal baseline performance status at treatment initiation. A study in Ethiopia showed similar findings, where bedridden performance status (not able to perform activities of daily living) was significantly associated with mortality [34]. Another study found no significant association, but when lost to follow-up patients were counted as death cases significant association was found [35]. Patients with advanced clinical diseases (WHO stage III or IV) had higher mortality compared to patients with WHO stage I or II. This finding was supported by several other studies done in Cameroon [4], Zambia [5], Ethiopia [20], Tanzania [24], and in other low-income countries [36]. The bedridden performance scale and clinical stage III or IV at ART initiation reflects the worst health condition of patients. Therefore, the significant effects of these conditions of patients on mortality indicate that patients died mostly because of their late initiation of ART when they had the worst health conditions.

The baseline CD4 count was not significantly associated with mortality in this study and this finding is consistent with one previous study [20]. However, most of the previous studies had contrast findings, where mortality varied significantly with baseline line CD4 count among HIV-infected patients. A study in India [6] showed that patients with CD4 count ≤ 50 had about three times higher mortality compared to >50 CD4 count. Another study in Tanzania [24] found higher mortality among patients with CD4 count <50 or $50-199$ compared to >200 CD4 count. One more study in low-income countries found that HIV-infected patients with CD4 count less than 25 died about three times more than patients with ≥ 50 CD4 count [36]. In the present study most of the patients (86.4%) had CD4 count of >50 cells/mm³, which could have made the comparison with higher CD4 count statistically unstable. However, examining CD4 count as continuous variable did not show a significant

Table 3 Hazard ratios (HR) of mortality in 1024 patients on ART

Determinants	Univariate analysis		Multivariate analysis ^f	
	HR (95% CI)	P value	HR (95% CI)	P value
Place of ART^a				
Kailali Distric ^b (ref.)	1.00			
Kanchanpur District ^b	2.03 (1.10 – 3.73)	0.023		
Doti District ^c	1.93 (1.24 – 3.00)	0.004		
Achham District ^c	1.71 (1.05 – 2.78)	0.031		
Sex				
Female (ref.)	1.00		1.00	
Male	5.40 (3.37 – 8.65)	<0.001	4.55 (2.43 – 8.51)	<0.001
Age groups (years)				
15- 32 years (ref.)	1.00			
33- 40 years	1.66 (1.04 – 2.64)	0.033		
>40 years	1.93 (1.19 – 3.14)	0.008		
Education				
Illiterate (ref.)	1.00			
Literate	1.45 (0.96 – 2.17)	0.075		
Performance scale				
Normal (ref.)	1.00		1.00	
Bedridden <50%	4.54 (2.99 – 6.88)	<0.001	2.05 (1.19 – 3.52)	0.010
Bedridden >50%	5.53 (3.45 – 8.87)	<0.001	3.41 (1.67 – 6.98)	0.001
Bodyweight (Kg)^d				
	1.02(1.01 – 1.05) ^g	0.048	1.04(1.01 – 1.07) ^g	0.010
WHO clinical stage				
Stage I or II (ref.)	1.00		1.00	
Stage III	4.39 (2.25- 8.55)	<0.001	2.96 (1.31- 6.69)	0.009
Stage IV	8.85 (4.43-17.66)	<0.001	3.28 (1.30- 8.29)	0.012
CD4 count (cells/mm³)^d				
	0.99 (0.98- 0.99)	<0.001		
Drug toxicity/side effects				
No (ref.)	1.00			
Yes	1.45 (0.96- 2.19)	0.078		
Active TB during treatment				
No (ref.)	1.00			
Yes	1.73 (1.15- 2.61)	0.009		
ART regimen^e				
d4T/3TC/NVP (ref.)	1.00			
d4T/3TC/EFV	0.90 (0.39- 2.07)	0.803		
ZDV/3TC/NVP	0.49 (0.31- 0.77)	0.002		
ZDV/3TC/EFV	0.97 (0.54- 1.73)	0.907		
ART regimen change				
No (ref.)	1.00			
Yes	1.37 (0.94- 2.00)	0.10		

^aKailali District (Seti Zonal Hospital and Tikapur Hospital), Kanchanpur District (Kanchanpur Zonal Hospital), Doti District (Doti District Hospital), and Achham District (Achham District Hospital). ^bplain/terai district, ^chill district. ^dContinuous variables. ^eTDF/3TC/EFV regimen was not included. ^fCox proportional hazards model adjusted for all variables in the table. ^gHR for 1 kg decrease in bodyweight.
ref.: reference group.

association. Adjustment for the clinical stage and performance scale might have affected the association of CD4 count with mortality in multivariate analysis. Similarly, the adjustment for sex, and clinical characteristics (clinical stage, CD4 count, performance scale, and body-weight) might have affected the independent effects of other variables (place of ART, age, active TB, ART regimen) which had significant effects on mortality in univariate analysis. Nonetheless, the variations in mortality rates across different ART sites, particularly the lower rates in Seti Zonal Hospital, could be attributed to the high rate (22.5%) of transfer-out at this site.

The main strength of this study is that it covers whole region. This study depicts the ART program outcome of diverse cultural and ecological regions (hill-difficult topography and plain/terai-easy access to health facility) of Nepal. This study could be applicable to other region within or outside Nepal with similar cultural and ecological context. The follow-up time was long enough to estimate survival and its determinants. This study used the routine treatment program data, which is cost effective and the findings would probably give a crucial insight to develop an effective and efficient HIV treatment, care, and support program and carved a sustainable way to respond HIV epidemic in Nepal. A limitation of this study is the lack of specific information on the causes of death. Another limitation is the lack of adequate information about Cotrimoxazole prophylaxis. Although it is routinely provided in Nepal, we were unable to include use of Cotrimoxazole prophylaxis in the analysis due to its incomplete information in the ART registers. Moreover, the mortality outcome of loss to follow-up patients in this study was unknown. Lost to follow-up patients might be at higher risk of death as shown in a meta-analysis performed in resource-limited settings that on average 46% of traced loss to follow-up patients on ART died [37]. However, a worst-case-scenario analysis was performed, where the mortality rate over the study period was estimated at 7.1 per 100 person-years at risk and the same determinants of mortality kept their significant association with increased mortality.

Conclusions

Over the study period, mortality rate among HIV-infected patients was high. Majority of deaths were observed within 3 months of ART initiation. Higher mortality among adult HIV-infected patients was associated with male sex and poor baseline clinical characteristics i.e. bedridden baseline performance status, lower baseline bodyweight, advanced baseline clinical disease (WHO clinical stage III or IV). Patients (mainly male labour migrants in Far-western region) should be encouraged to come forward for early HIV testing and counseling, and to initiate early treatment.

HIV-infected patients should to be given proper counseling on nutritional feeding.

Competing interests

The authors declare that they have no competing interests.

Authors' contributions

LB, EK & LAA conceived and designed the study. LB, KD, RS & DKK participated in acquisition of data. LB analysed the data. LB, EK, KD, RS, DKK, AME & LAA interpreted the data and drafted the manuscript. All authors critically revised the manuscript and approved the final version. LB is the guarantor and takes responsibility for the integrity of the work as a whole.

Acknowledgement

We thank Asim Acharya for his support and all the ART personnel in Far-western region, Nepal for their cooperation during data collection.

Funding

Department of Community Medicine, University of Tromsø, Norway had provided financial support for this research but had no role in study design, data collection or analysis, report writing or decision to publish this research data in peer-reviewed journal.

Author details

¹Department of Community Medicine, Faculty of Health Sciences, University of Tromsø, Tromsø, Norway. ²Department of Public Health Sciences, Karolinska Institutet, Stockholm, Sweden. ³Centre for International Health, Faculty of Medicine and Dentistry, University of Bergen, Bergen, Norway. ⁴National Centre for AIDS and STD Control, Kathmandu, Nepal. ⁵Division of Global Health (IHCAR), Department of Public Health Sciences, Karolinska Institutet, Stockholm, Sweden. ⁶Department of Health and Care Sciences, Faculty of Health Sciences, University of Tromsø, Tromsø, Norway.

Received: 28 June 2013 Accepted: 19 December 2013

Published: 26 December 2013

References

1. WHO/UNAIDS/UNICEF: *Global HIV/AIDS Response: Epidemic update and health sector progress towards universal access*. Geneva: UNAIDS; 2011.
2. Palella FJ Jr, Delaney KM, Moorman AC, Loveless MO, Fuhrer J, Satten GA, et al: *Declining morbidity and mortality among patients with advanced human immunodeficiency virus infection. HIV Outpatient Study Investigators*. *N Engl J Med* 1998, **338**(13):853–860.
3. Bor J, Herbst AJ, Newell ML, Barnighausen T: *Increases in adult life expectancy in rural South Africa: valuing the scale-up of HIV treatment*. *Science* 2013, **339**(6122):961–965.
4. Sieleunou I, Souleymanou M, Schonenberger AM, Menten J, Boelaert M: *Determinants of survival in AIDS patients on antiretroviral therapy in a rural centre in the Far-North Province, Cameroon*. *Trop Med Int Health* 2009, **14**(1):36–43.
5. Stringer JS, Zulu I, Levy J, Stringer EM, Mwango A, Chi BH, et al: *Rapid scale-up of antiretroviral therapy at primary care sites in Zambia: feasibility and early outcomes*. *JAMA* 2006, **296**(7):782–793.
6. Bachani D, Garg R, Rewari BB, Hegg L, Rajasekaran S, Deshpande A, et al: *Two-year treatment outcomes of patients enrolled in India's national first-line antiretroviral therapy programme*. *Natl Med J India* 2010, **23**(1):7–12.
7. NCASC: *Nepal Country Progress Report*. Kathmandu: National Centre for AIDS and STD Control; 2012.
8. Mojumdar K, Vajpayee M, Chauhan NK, Mendiratta S: *Late presenters to HIV care and treatment, identification of associated risk factors in HIV-1 infected Indian population*. *BMC Public Health* 2010, **10**:416.
9. NCASC: *National estimates of HIV infections in Nepal*. Kathmandu: National Centre for AIDS and STD Control; 2012.
10. Deuba K, Ekstrom AM, Shrestha R, Ionita G, Bhatta L, Karki DK: *Psychosocial health problems associated with increased HIV risk behavior among men who have sex with men in Nepal: a cross-sectional survey*. *PLoS one* 2013, **8**(3):e58099.
11. NCASC: *National HIV/AIDS Strategy 2011–2016*. Kathmandu: National Centre for AIDS and STD Control; 2012.

12. NSCB: *Resource inflow for the HIV & AIDS Programmes in Nepal*. Kathmandu: HIV AIDS and STI Control Board; 2010.
13. NCASC: *Factsheet N4: Antiretroviral Therapy (ART) services in Nepal, as of July, 2011*. Kathmandu: National Centre for AIDS and STD Control; 2011.
14. CBS: *National population and housing census 2011*. Kathmandu: Central Bureau of Statistics; 2012.
15. UNFCO: *An overview of Far Western Region of Nepal*. Dadelhdura: United Nations Field Coordination Office; 2010.
16. NCASC: *National Guidelines for Antiretroviral Therapy*. Kathmandu: National Centre for AIDS and STD Control, Apr; 2012.
17. Dhungel BA, Dhungel KU, Easow JM, Singh YI: **Opportunistic infection among HIV seropositive cases in ManiPal Teaching Hospital, Pokhara, Nepal**. *Kathmandu Univ Med J (KUMJ)* 2008, **6**(23):335–339.
18. Mishra BN, Sinha ND, Shukla SK, Das RN: **The epidemiology of opportunistic infections in HIV/AIDS cases in Nepal**. *Indian J Prev Soc Med* 2009, **40**(1):96–100.
19. Hasse B, Ledergerber B, Furrer H, Battegay M, Hirschel B, Cavassini M, et al: **Morbidity and aging in HIV-infected persons: the Swiss HIV cohort study**. *Clin Infect Dis* 2011, **53**(11):1130–1139.
20. Alemu AW, Sebastian MS: **Determinants of survival in adult HIV patients on antiretroviral therapy in Oromiyaa, Ethiopia**. *Glob Health Action* 2010, **3**:10.3402/gha.v3i0.5398.
21. Johannessen A, Naman E, Ngowi BJ, Sandvik L, Matee MI, Aglen HE, et al: **Predictors of mortality in HIV-infected patients starting antiretroviral therapy in a rural hospital in Tanzania**. *BMC Infect Dis* 2008, **8**:52.
22. Wasti SP, Simkhada P, Tejljingen ER: **Antiretroviral treatment programmes in Nepal: problems and barriers**. *Kathmandu Univ Med J (KUMJ)* 2009, **7**(27):306–314.
23. Jerene D, Endale A, Hailu Y, Lindtjorn B: **Predictors of early death in a cohort of Ethiopian patients treated with HAART**. *BMC Infect Dis* 2006, **6**:136.
24. Mageda K, Leyna GH, Mmbaga EJ: **High Initial HIV/AIDS-related mortality and -its predictors among patients on antiretroviral therapy in the Kagera Region of Tanzania: a five-year retrospective cohort study**. *AIDS Res Treat* 2012, **2012**:10.1155/2012/843598.
25. NCASC: *Factsheet N3: HIV Testing and Counseling service in Nepal, As of July, 2012*. Kathmandu: National Centre for AIDS and STD Control; 2012.
26. NCASC: *Factsheet N4: Antiretroviral Therapy (ART) services in Nepal, As of July, 2012*. Kathmandu: National Centre for AIDS and STD Control; 2012.
27. Alibhai A, Kipp W, Saunders LD, Senthilselvan A, Kaler A, Houston S, et al: **Gender-related mortality for HIV-infected patients on highly active antiretroviral therapy (HAART) in rural Uganda**. *Int J Womens Health* 2010, **2**:45–52.
28. Shafique N: *editor Preventing mother-to-child HIV transmission through community-based approach in Nepal*. Washington DC: XIX International AIDS Conference; 2012.
29. NCASC: *IBBS Report 2010: Integrated Biological and Behavioral Surveillance survey among male labor migrants; Round III, Mid and Far-Western Regions of Nepal*. Kathmandu: National Centre for AIDS and STD Control; 2010.
30. Nepal B: **Population mobility and spread of HIV across the Indo-Nepal border**. *J Health Popul Nutr* 2007, **25**(3):267–277.
31. Poudel KC, Okumura J, Sherchand JB, Jimba M, Murakami I, Wakai S: **Mumbai disease in far western Nepal: HIV infection and syphilis among male migrant-returnees and non-migrants**. *Trop Med Int Health* 2003, **8**(10):933–939.
32. Vaidya NK, Wu J: **HIV epidemic in Far-Western Nepal: effect of seasonal labor migration to India**. *BMC Public Health* 2011, **11**:310.
33. CDC: *Latent Tuberculosis Infection: A guide for primary health care providers*. Atlanta: Centre for Disease Control and Prevention; 2010.
34. Biadgilign S, Reda AA, Digaffe T: **Predictors of mortality among HIV infected patients taking antiretroviral treatment in Ethiopia: a retrospective cohort study**. *AIDS research and therapy* 2012, **9**(1):15.
35. Worku A: *Pattern and determinants of survival in adult HIV patients on antiretroviral therapy, Ethiopia*. Umeå: Umeå University; 2009.
36. Brinkhof MW, Dabis F, Myer L, Bangsberg DR, Boulle A, Nash D, et al: **Early loss of HIV-infected patients on potent antiretroviral therapy programmes in lower-income countries**. *Bull World Health Organ* 2008, **86**(7):559–567.
37. Brinkhof MW, Pujades-Rodriguez M, Egger M: **Mortality of patients lost to follow-up in antiretroviral treatment programmes in resource-limited settings: systematic review and meta-analysis**. *PLoS one* 2009, **4**(6):e5790.

doi:10.1186/1471-2334-13-604

Cite this article as: Bhatta et al.: Survival on antiretroviral treatment among adult HIV-infected patients in Nepal: a retrospective cohort study in far-western Region, 2006–2011. *BMC Infectious Diseases* 2013 **13**:604.

Submit your next manuscript to BioMed Central and take full advantage of:

- Convenient online submission
- Thorough peer review
- No space constraints or color figure charges
- Immediate publication on acceptance
- Inclusion in PubMed, CAS, Scopus and Google Scholar
- Research which is freely available for redistribution

Submit your manuscript at
www.biomedcentral.com/submit

