

Complete mitochondrial genome sequences of the Arctic Ocean codfishes *Arctogadus glacialis* and *Boreogadus saida* reveal oriL and tRNA gene duplications

Ragna Breines · Anita Ursvik · Marianne Nymark ·
Steinar D. Johansen · Dag H. Coucheron

Received: 4 December 2007 / Revised: 16 April 2008 / Accepted: 5 May 2008 / Published online: 27 May 2008
© The Author(s) 2008

Abstract We have determined the complete mitochondrial genome sequences of the codfishes *Arctogadus glacialis* and *Boreogadus saida* (Order Gadiformes, Family Gadidae). The 16,644 bp and 16,745 bp mtDNAs, respectively, contain the same set of 37 structural genes found in all vertebrates analyzed so far. The gene organization is conserved compared to other Gadidae species, but with one notable exception. *B. saida* contains heteroplasmic rearrangement-mediated duplications that include the origin of light-strand replication and nearby tRNA genes. Examination of the mitochondrial control region of *A. glacialis*, *B. saida*, and four additional representative Gadidae genera identified a highly variable domain containing tandem repeat motifs in *A. glacialis*. Mitogenomic phylogeny based on the complete mitochondrial genome sequence, the concatenated protein-coding genes, and the derived protein sequences strongly supports a sister taxa affiliation of *A. glacialis* and *B. saida*.

Keywords Arctic cod · DNA rearrangement · Gadidae · Heteroplasmy · mtDNA · Polar cod

Introduction

More than 375 complete sequenced mitochondrial genomes from ray-finned fishes have so far (December 2007) been submitted to the database (<http://www.ncbi.nlm.nih.gov>), and many of these sequences have contributed considerably to resolving phylogenetic relationships among fishes. Evolutionary relationships at different taxonomic levels have been addressed, including Division (Inoue et al. 2003; Miya et al. 2003), Subdivision (Ishiguro et al. 2003), Genus (Doiron et al. 2002; Minegishi et al. 2005), and Species (Yanagimoto et al. 2004; Ursvik et al. 2007).

The circular mitochondrial genomes from ray-finned fishes are usually small (ca. 17,000 bp), compactly organized, and encode only a subset of the mitochondrial gene products (13 protein genes, 22 tRNA genes, 2 rRNA genes) (Boore 1999). The mitochondrial gene order is invariable among the ray-finned fishes, except some notable examples of tRNA gene duplications and rearrangements at three different mitogenomic sites. The tRNA-gene IQM cluster located between the NADH dehydrogenase subunit 1 (ND1) and ND2 genes is the most frequently observed rearrangement site (Miya et al. 2001, 2003; Mabuchi et al. 2004; Satoh et al. 2006). The second rearrangement site includes the tRNA-Glu (E) gene usually located between ND6 and cytochrome B (CytB) genes, but occasionally transposed into a position between CytB and the control region (CR) (Miya and Nishida 1999; Inoue et al. 2001; Satoh et al. 2006). Interestingly, codfishes belonging to the family Macrouridae (the grenadiers) frequently harbor tRNA gene rearrangements at both mitogenomic sites (Satoh et al. 2006). A third rearrangement site was recently reported in WANCY tRNA gene cluster of the blackspot seabream, including

R. Breines · A. Ursvik · M. Nymark · S. D. Johansen (✉) ·
D. H. Coucheron
Department of Molecular Biotechnology,
Institute of Medical Biology, University of Tromsø,
9037 Tromsø, Norway
e-mail: steinar.johansen@fagmed.uit.no

S. D. Johansen
Marine Molecular Biology and Genomics Group,
Faculty of Biosciences and Aquaculture,
Bodo University College, 8049 Bodo, Norway

oriL disruption and heteroplasmic tRNA gene duplications (Ponce et al. 2008).

The complete mtDNA genomes have so far only been reported for a few Gadidae species, a family harboring commercially and ecologically important codfish species. These include Atlantic cod (*Gadus morhua*, Johansen and Bakke 1996; Ursvik et al. 2007), walleye pollock (*Theragra chalcogramma*, Yanagimoto et al. 2004), Norwegian pollock (*Theragra finnmarchica*, Ursvik et al. 2007), haddock (*Melanogrammus aeglefinus*, Roques et al. 2006; Ursvik et al. 2007), and whiting (*Merlangius merlangus*, Roques et al. 2006). In addition, extensive partial mtDNA sequences were reported recently by Carr and coworkers for an additional five Gadidae species (Coulson et al. 2006). Several of the Gadidae species have been investigated in phylogenetic (Carr et al. 1999; Møller et al. 2002; Bakke and Johansen 2002, 2005; Coulson et al. 2006; Teletchea et al. 2006; Ursvik et al. 2007) or population studies (Shields and Gust 1995; Sigurgislason and Arnason 2003; Arnason 2004; Yanagimoto et al. 2004) based on mtDNA sequences. These reports show that the Gadidae fishes are typically characterized by a monophyletic evolutionary origin and a low-level geographic structuring of mitochondrial genotypes.

The Arctic cod (*Arctogadus glacialis*) and Polar cod (*Boreogadus saida*) are endemic to the Arctic Ocean, and considered key species in Arctic ecosystems (Smetacek and Nicol 2005). Both are important for commercial fisheries in the production of fishmeal and fish oil (Cohen et al. 1990). Only two reported studies have included both these species in mtDNA-based phylogeny. Møller and coworkers analyzed approximately 400 nt positions of the CytB gene, and concluded that *A. glacialis* and *B. saida* apparently have to be considered as sister taxa, but this clustering was not well supported in their statistical tests (Møller et al. 2002). Recently, a phylogenetic analysis based on almost complete mitochondrial genome sequences of several Gadidae species, including *A. glacialis* and *B. saida*, was reported. This study corroborated the findings by Møller and coworkers, but with improved statistical support (Coulson et al. 2006). In an attempt to further approach the Gadidae taxonomy, we have determined the complete mitochondrial genome sequences of *A. glacialis* and *B. saida* and performed phylogenetic analysis based on both the nucleotide and the derived amino acid sequences. Sister taxa affiliation of *A. glacialis* and *B. saida* was strongly supported. Interestingly, the sequencing analyses identified a novel gene arrangement within the mitochondrial genome of *B. saida* that involves duplications of tRNA genes and the origin of light strand replication (oriL).

Materials and methods

Fish samples and DNA extraction

The *B. saida* specimens (Bs1 and Bs2) and the *A. glacialis* specimen (Ag1) were collected from the Arctic Ocean, and DNA was extracted from muscle tissue by using the mtDNA Extractor CT Kit from Wako as previously reported (Ursvik et al. 2007).

PCR amplification, cloning, and DNA sequencing

The PCR and sequencing primers (Table 1) were designed from the published Atlantic cod mtDNA sequence (X99772; Johansen and Bakke 1996) and used to amplify the mitochondrial genomes in 1–4 kb fragments. Each PCR reaction (25 µl) included the total DNA sample as well as 0.2 mM dNTPs, 0.2 µM of each primer, and 0.6 U of Expand HiFidelity polymerase and buffer (Roche). The PCR reactions were performed in a Peltier 200 Thermal cycler with the following cycling parameters: 94°C initial denaturation for 2 min., 30 cycles with 94°C denaturation for 15 s, 53°C annealing for 30 s, 68°C elongation for 2–3 min, and a final extension at 72°C for 7 min. The total amplified reactions were run on 0.8 or 1% agarose gels containing ethidium bromide, and bands were excised and purified with Qiagen gel extraction kit. PCR products from the control region were inserted into the p-Drive vector (Qiagen) and transformed in *E. coli* EZ competent cells. Positive clones were verified with plasmid isolation (Wizard plasmid purification kit) and EcoRI restriction cutting followed by agarose gel electrophoresis. Direct sequencing was performed on the remaining PCR products on both strands using the BigDye version 3.1 kit (Applied Biosystems) with the same primers as in the PCR and internal primers. The sequencing reaction mixture included 10–60 ng of the PCR-template, 0.35 µM primer, 2 µl BigDye mix, 1 µl 5× reaction buffer in a 10 µl volume. The sequencing products were analyzed in an ABI genetic analyzer (Applied Biosystems).

Data analyses

Computer analyses of DNA sequences were performed using software from DNASTAR Inc. The phylogenetic analyses were based on two sets of multiple alignments of nucleotide sequences derived from the complete mitochondrial genomes of 16 specimens representing eight closely related species within the Gadidae family. One alignment set was constructed from 16,783 nucleotide positions covering the complete mitochondrial genomes except the

Table 1 PCR and DNA sequencing primers

Primer	Sequence (5', 3')
L42	GAT GGA CCC TAG AAA GTC C
H171	AGA TGT GCC TGA TAC CTG CT
L290	GAA AGC TTG ACT TAG TTA AG
H414	TGA CTT CGG ATG CGT ATA AC
H617	TAG AAC AGG CTC CTC TAG
L985	GAG GCA AGT CGT AAC AT
L1223	CGC AAG GGA ACG CTG AAA
H1275	AGG TAC GAG TAG AAA ACT CTG
L1757	CTT ACC AGG CTG TCT TAT GC
H1805	GTC CGT TCC GAC TTA CAC
L2222	ATT ACA TAA GAC GAG AAG AC
L2776	TGT GTT AGA GTG GCA GAG CC
H3069	AGT GCA AGT ACT GGC AA
H3562	AGC CCA GAA ATA GTA CAG CT
L3760	TGG CAC TAG TGA TTT GAC AT
H4559	AGC CAA GAT GTG CGA TTG AT
L4876	TAA GCC TTT ACT TTT ATC T
L5232	CTC TTA GTT AAC AGC TAA GC
H5475	AGG GTG CCA ATG TCT TTG TG
L5572	TCG AGC AGA GCT AAG TCA AC
L6604	ATG TAT AGG AGC TGT CTT TG
H6880	TCA ACT GCT ATT ACT TCC CG
L7208	ATC ACC CGT AAT AGA AGA GT
H7790	TCA AAG TGT TCT AGA GGA AC
L7901	TGG AAG CAG GTG ACT CCC AA
H8439	ATG ACC TAG TGC ATG AGT TG
L8575	TTA CAG CTA ATC TTA CAG CA
H8764	GTG GTA TGC ATG AGC TTG GT
L9302	TTC AAG GAC TGG AGT ACT AT
L9859	TCC CAT GAG GAG ATC AAC TG
H10545	TGA CTT GCA AGG AGT ATT AG
L10603	TAT AAA CCG CCA ACG TA
L10923	CTG ATG AGC TGC TTG GCA TG
L11407	GAC CAC ATG ATG ATT TAT TG
H11887	ACT TGG AGT TGC ACC AAG AG
L12121	TAT AGA GGC TGT AAC TTC TT
H12608	TCA TGG GTG AAG TCC AAA CT
L12760	TCA GAC TGC ACT AAC TCT CT
H13913	GTG AGT ACC TGT AGA TGA GT
L14068	AGC TAA AGC TGC ACA ATA AG
L14331	CCA CCG TTG TTA TTC AAC T
H14746	AAT TAC GGT AGC TCC TCA GAA TGA TAT TTG TCC TCA
L15250	CTC GAT TCT AGT CCT CAT GG
L15498	GAA ACT GCC CTA GTA GCC A
L15500	ACT GAG CTA CTA GGG CAG TTT C
H15666	GTT TAA TTT AGA ATT CTA GCT TTG G
H16390	AAC CGA GGA CTA GCT CCA CC
SP6	GATTTAGGTGACACTATAG
T7	AATACGACTCACTATAG

Note: primers are numbered and named according to the Atlantic cod sequence X99772

highly variable ETAS (extended termination associated sequence) domain within the control region. The second alignment set was constructed by aligning the 11,400 nucleotide positions (3,800 amino acids) of the 13 concatenated protein-coding gene excluding the stop codons. This nucleotide alignment set was translated to amino acids and used in phylogenetic analysis. The multiple alignments were constructed using ClustalX version 1.81 (Thompson et al. 1997) and manual refinements. Molecular phylogenies were reconstructed by using the tree-building methods of minimum evolution (ME) and maximum parsimony (MP) in MEGA version 3.1 (Kumar et al. 2004) and MEGA version 4.0 (Tamura et al. 2007), as well as maximum likelihood (ML) in PAUP* (version 4.0b10) (Swofford 2002). ME trees were built from all the nucleotides present in both nucleotide alignment sets. Furthermore, ME trees were built from the alignment of the nucleotides of the 13 concatenated protein-coding genes by using synonymous substitutions, codon positions 1 and 2, and translated amino acids. For all the ME analyses, different models of nucleotide or amino acid substitutions were used. MP trees were built from both alignment sets using all nucleotides, and from the alignment of the nucleotides of the 13 concatenated protein-coding genes using codon nucleotide positions 1 and 2, as well as translated amino acids. Analyses that include nucleotides were performed by heuristic searches using close-neighbor-interchange (CNI) search level 3 and production of initial trees by random addition of sequences (100 replications), while the max-mini branch and bound tree search option was used for construction of trees from the translated amino acid alignment. ML trees

were built from the alignment covering the near complete mt genome were based on the sequence evolution model HKY + I+ G selected by the computer program WinModel-test version 4b (Posada and Crandall 1998), while trees built from the alignment of the nucleotides (all nt positions, and codon positions 1 and 2) of the 13 concatenated protein-coding genes used the evolution model GTR + I+ G selected by WinModeltest. The reliabilities of tree branching points of the ME, MP, and ML trees were evaluated by bootstrap analyses (2,000 replications).

Results and discussion

Gene content and organization of *A. glacialis* and *B. saida* mitochondrial genomes

The complete mitochondrial genome sequences of *A. glacialis* (isolate Ag1) and *B. saida* (isolate Bs1) were determined by a primer walking approach and found to be 16,644 and 16,745 bp, respectively. These sizes are similar to those of other known Gadidae species (Johansen and Bakke 1996; Yanagimoto et al. 2004; Roques et al. 2006; Ursvik et al. 2007). The circular mtDNA genomes contain the same set of 13 protein coding genes, 22 transfer RNA genes, and 2 ribosomal RNA genes found in all sequenced vertebrate mtDNA to date, and in an overall organization similar to most bony fish mitochondrial genomes (Fig. 1a). Furthermore, GC contents, base compositions, and codon usages were found to be very similar to other sequenced Gadidae mitochondrial genomes (see Roques et al. 2006).

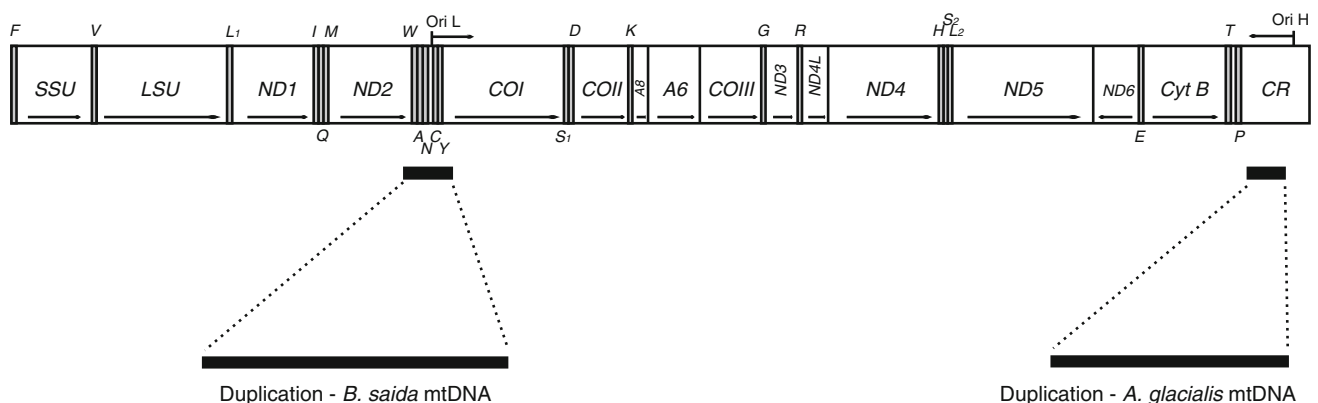


Fig. 1 Gene content and organization of *A. glacialis* and *B. saida* mitochondrial genomes. A linear map of the circular mtDNA is presented. All genes, except ND6 and eight of the transfer RNA genes (indicated by the standard one-letter symbols for amino acids), are encoded by the H-strand. Transfer RNA genes encoded by the L-strand are indicated below the diagram. Abbreviations: *SSU* and *LSU* mitochondrial small- and large-subunit ribosomal RNA genes, *ND1*–*6* NADH dehydrogenase subunits 1–6, *COI*–*III* cytochrome c oxidase

subunits I–III, *A6* and *A8* ATPase subunits 6 and 8, *CytB* cytochrome B, *oriH* and *oriL* origin of H-strand and L-strand replication; *CR* control region containing the D-loop. The mtDNA regions containing sequence duplications in *A. glacialis* (*CR*) and *B. saida* (*WANCY* tRNA cluster) are indicated below the mt-genome organization map. The complete mitochondrial genomes of *B. saida* and *A. glacialis* have been assigned the accession numbers AM919428 and AM919429, respectively, in the EMBL Database

Rearrangements and heteroplasmic duplications of oriL and flanking tRNA genes in *B. saida*

Initial analysis indicated the DNA sequencing heterogeneity within the tRNA gene cluster flanking the origin of light-strand replication (oriL) in *B. saida*. A PCR-amplification and DNA sequencing approach was included to study this region in more detail. The tRNA gene cluster and some flanking sequences were amplified from DNA isolated from two specimens of *B. saida* as well as from one *A. glacialis* (Fig. 2a) and subsequently separated by agarose electrophoresis (Fig. 2b). Although *A. glacialis* generated a product (DNA I) consistent with the typical vertebrate organization (see Fig. 2a), the two *B. saida* specimens generated larger products (DNA II and DNA III). Interestingly, one of the *B. saida* specimens (Bs2) appears heteroplasmic in the tRNA gene/oriL cluster, since both the DNA II and DNA III products were observed (Fig. 2b).

Four of the amplified DNA fragments (DNA I from Ag1, DNA II from Bs1 and Bs2, and DNA III from Bs2) were

eluted from the gel, cloned into a plasmid vector, and subsequently DNA-sequenced. The results are summarized in Fig. 2c and confirmed rearrangement-mediated duplications and insertions that include oriL and nearby tRNA genes in *B. saida*. In the DNA II product oriL and tRNA-Asn gene (N) were perfectly duplicated, but oriL was followed by a 40-bp unique noncoding (NC) sequence. Furthermore, a truncated tRNA-Ala gene (ψA) was located between the NC region and the duplicated tRNA-Asn gene. The DNA III product was identical to DNA II, but with a duplicated insertion (Fig. 2c).

An extensive partial mitochondrial genome sequence was reported from *B. saida* (Coulson et al. 2006). Unfortunately, the tRNA gene cluster sequence in this specimen was not well resolved, and probably the insertion escaped notice. Related tRNA gene rearrangements to those we observe in *B. saida* have been reported in another vertebrate system, the mitochondrial genomes of lungless salamanders (Mueller and Boore 2005). Duplication of the oriL region and flanking tRNA genes was observed, as well as the presence of

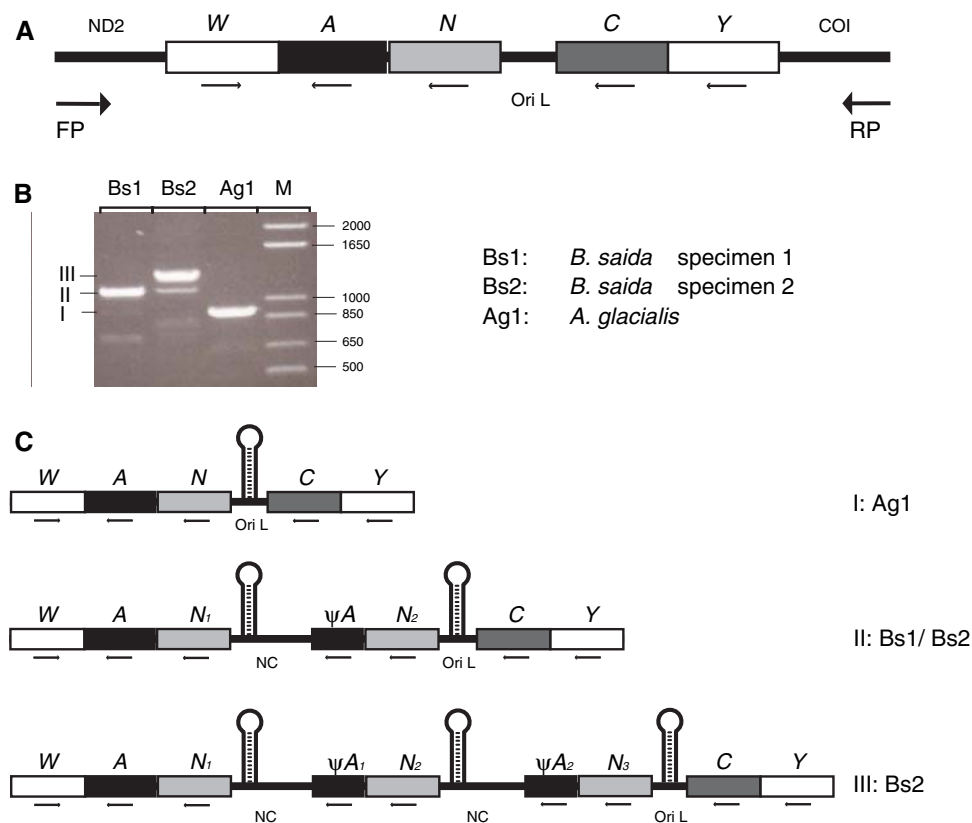


Fig. 2 Duplication of oriL and flanking tRNA genes in *B. saida*. **a** Schematic map of the analyzed mtDNA region (WANCY tRNA gene cluster). The cluster was amplified using a forward primer (FP; L4876) and a reverse primer (RP; H5785). **b** Separation of amplified products in a 0.8% agarose gel. M, the size marker 1 Kb Plus DNA Ladder from Invitrogen (right). Analyzed amplified DNA bands named I, II, and III are indicated (left). Two specimens of *B. saida* (Bs1 and Bs2) were analyzed in addition to the *A. glacialis* specimen (Ag1). Both Bs1 and

Bs2 appear heteroplasmic in the WANCY tRNA gene cluster. The additional smaller DNA bands (less than 800 bp) are due to unspecific primer bindings to sequences present in the total DNA preparations. **c** Schematic summary of sequence analyses of the fragments I, II, and III. The multiple copies of oriL (presented as a hairpin structure), tRNA-Asn (N), and truncated tRNA-Ala (ψA) present in *B. saida* are identical in sequence. NC noncoding sequence

truncated tRNA genes. Interestingly, all these mitochondrial gene rearrangements appear closely linked to the origin of replication, and the authors suggest that imprecise biochemical processes during mtDNA replication may contribute to such rearrangements (Mueller and Boore 2005). Recently, a heteroplasmic rearrangement was reported at the same tRNA gene cluster of the fish blackspot seabream (Ponce et al. 2008). Our finding of DNA replication-induced mtDNA rearrangements in *B. saida* supports this arrangement as a widespread, but sporadic, molecular feature within vertebrates. The molecular implication in mtDNA replication of multiple oriL copies has not yet been investigated.

Direct repeat motifs in the control region of *A. glacialis*

The major noncoding region noted within *A. glacialis* and *B. saida* mitochondrial genomes is located between the

tRNA-Pro (P) and tRNA-Phe (F) genes. This region, named the control region (CR), constitutes about 7% of vertebrate mitochondrial genomes and commonly contains the displacement loop (D-loop), the promoters for heavy and light strand transcription, the heavy-strand replication origin (oriH), and several binding sites of specific protein factors (Falkenberg et al. 2007). The CRs of *A. glacialis* and *B. saida* (Fig. 3a) are divided into three domains, namely, the extended termination-associated sequence (ETAS) domain, the central conserved (CC) domain, and the conserved sequence block (CSB) domain. Although the vertebrate CSB domain contains important functional sequences involved in oriH replication (CSB-2 and CSB-3) and transcription initiation (Foran et al. 1988; Sbisà et al. 1997), the CC domain still lacks functional assignment. The ETAS domain is highly variable among the Gadidae and harbors heteroplasmic tandem repeats (40 nt HTR motif) in *G. morhua*

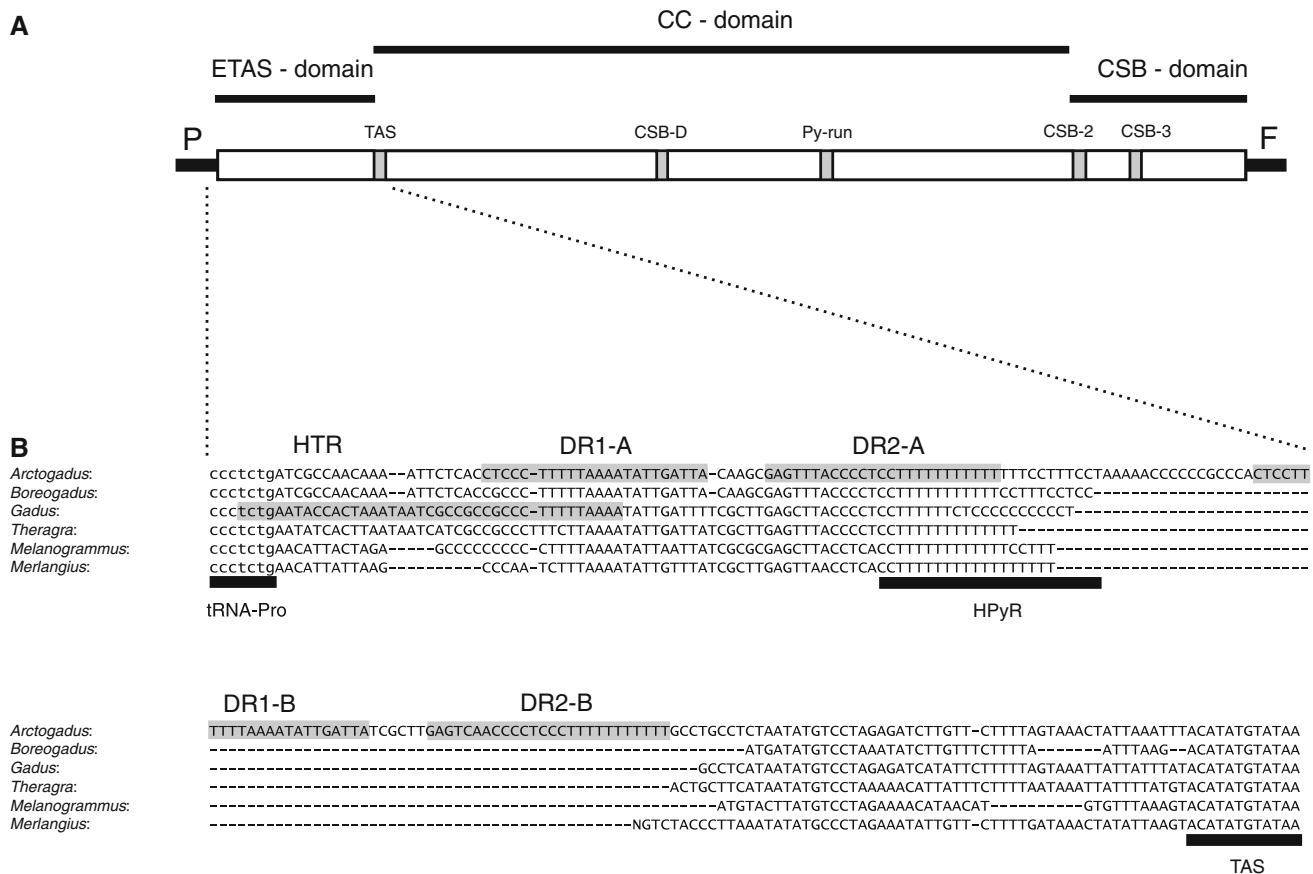


Fig. 3 Organization and variability of the control region in Gadidae species. **a** Schematic organization of the mitochondrial control region (CR) in *A. glacialis* and *B. saida*. CR is located between the tRNA genes Pro (P) and Phe (F), and contains the highly conserved termination association sequence (TAS), the conserved sequence box D (CSB-D), the pyrimidine sequence run (Py-run) in the CC-domain, and the two conserved sequence boxes in the CSB-domain associated with oriH (CSB-2 and CSB-3). **b** Detailed view of the highly variable extended termination association sequence (ETAS-domain) in completely sequenced mitochondrial genomes representing six Gadidae

genera (*Arctogadus*, *A. glacialis* AM919429; *Boreogadus*, *B. saida* AM919428; *Gadus*, *G. morhua* X99772; *Theragra*, *T. finnmarchica* AM489718; *Melanogrammus*, *M. aeglefinus* AM489717; *Merlangius*, *M. merlangus* DQ020496). The 40-bp heteroplasmic tandem repeat (HTR) motif present in *G. morhua*, and the A and B copies of the two direct repeat motifs (DR1, 23 bp; DR2, 26 bp) in *A. glacialis*, are boxed. The 5' end of the tRNA-Pro gene, TAS, and the heteroplasmic pyrimidine run (HPyR) are indicated below the sequence alignment. HPyR is heterogenic both within and between Gadidae specimens (Yanagimoto et al. 2004; Ursvik et al. 2007)

(Johansen et al. 1990; Arnason and Rand 1992; Johansen and Bakke 1996) at the RS1 site (nomenclature by Savolainen et al. 2000). Interestingly, the *A. glacialis* ETAS domain contains two direct repeat motifs (DR1 and DR2) present in two copies each (Fig. 3b). While the 23 bp DR1 motif partly overlaps the *G. morhua* HTR, the 26 bp DR2 motif contains the pyrimidine run (HPyR) known to be heteroplasmic in Gadidae (Yanagimoto et al. 2004; Ursvik et al. 2007). These functional unassigned *A. glacialis* sequence motifs are apparently conserved among the Gadidae fishes, but are present in single copy in most species investigated except *A. glacialis*.

Mitogenomic phylogeny strongly supports sister taxa affiliation of *A. glacialis* and *B. saida*

Several mtDNA-based reports have included *A. glacialis* and/or *B. saida* in phylogenetic analysis (e.g., Carr et al., 1999; Møller et al. 2002; Bakke and Johansen 2005; Teletchea et al. 2006; Coulson et al. 2006). A common finding is that *Arctogadus* and *Boreogadus* appear more related to *Gadus* and *Theragra* than to any other genera within the Gadidae family. Møller and coworkers reported parsimony clustering of *Arctogadus* and *Boreogadus*, but without significant statistical support (Møller et al. 2002). Similarly, both parsimony and likelihood analyses based on near complete mitochondrial genome data sets support sister taxa affiliation of *A. glacialis* and *B. saida*, but with some statistical restrictions (Coulson et al. 2006). In an attempt to further investigate the taxonomy of *A. glacialis* and *B. saida*, we performed mitogenomic-based phylogeny that included two specimens of each taxa. Thus, eight species representing five closely related Gadidae genera (*Arctogadus*, *Boreogadus*, *Gadus*, *Theragra*, and *Melanogrammus*) were included. Phylogenetic analyses were performed on datasets based on the alignment of the almost complete mitochondrial genome (16,783 nucleotide positions) and on the alignment of the nucleotides of the 13 concatenated protein-coding genes (all 11,400 positions, synonymous substitutions, or only first and second codon positions), and on the derived protein sequences (3,800 amino acid positions). All trees resulted in essentially identical tree topologies. A representative ML tree is presented in Fig. 4, and supports the conclusions by Møller et al. (2002) and Coulson et al. (2006) that *A. glacialis* and *B. saida* are closely related to the genera *Gadus* and *Theragra*. These analyses could not conclusively resolve some of the internal relationships between the *Gadus* and *Theragra* species, but strongly support the notions that *G. macrocephalus*/*G. ogac* and *T. chalcogramma*/*T. finnmarkica* have to be considered as only two, not four, distinct Gadidae species (Coulson et al. 2006; Ursvik et al. 2007). Finally, we conclude that *A. glacialis* and *B. saida* represent sister taxa with a more recent

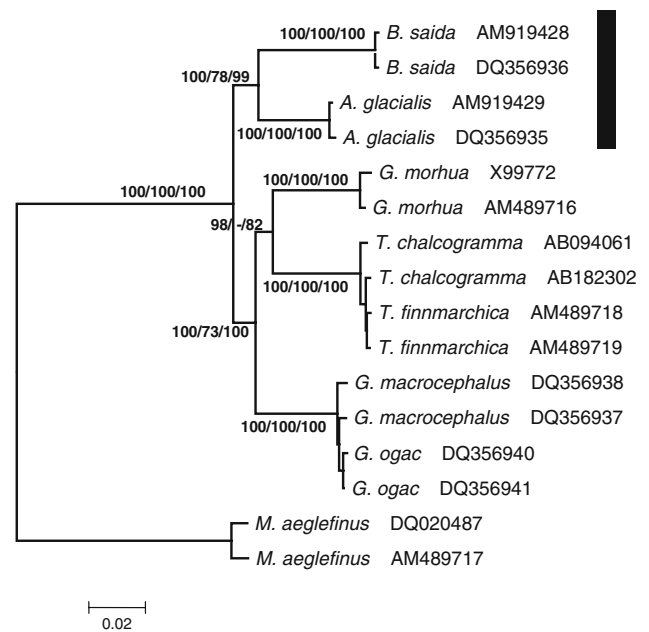


Fig. 4 Maximum-likelihood (ML) phylogenetic tree based on the alignment of 16,783 nucleotide positions of the mitochondrial genomes from 16 specimens representing eight Gadidae species (accession numbers are indicated). The evolution model is HKY + G + I. Tree reconstruction using maximum parsimony (MP) or minimal evolution (ME) resulted in essentially identical tree topologies. Bootstrap values (%) of 2,000 replication are shown at the internal nodes (ML/MP/ME). *M. aeglefinus* was used as an out-group. The sister taxa affiliation of *B. saida* and *A. glacialis* is indicated by black bar

common evolutionary origin compared to the other Gadidae species investigated. This conclusion was further supported in our analyses by high bootstrap values in all trees reconstructed by ME, MP, and ML.

Acknowledgments We thank Svein-Erik Fevolden at the Norwegian College of Fishery Science, University of Tromsø, for providing fish samples. This work was supported by grants from the MABIT (Marine Biotechnology in Northern Norway) program, the Norwegian Research Council by the GenoFish Consortium, the Bodø University College, and the University of Tromsø.

Open Access This article is distributed under the terms of the Creative Commons Attribution Noncommercial License which permits any noncommercial use, distribution, and reproduction in any medium, provided the original author(s) and source are credited.

References

- Arnason E (2004) Mitochondrial cytochrome B DNA variation in the high-fecundity Atlantic cod: trans-Atlantic clines and shallow gene genealogy. *Genetics* 166:1871–1885
- Arnason E, Rand DM (1992) Heteroplasmy of short tandem repeats in mitochondrial DNA of Atlantic cod, *Gadus morhua*. *Genetics* 132:211–220
- Bakke I, Johansen S (2002) Characterization of mitochondrial ribosomal RNA genes in gadiformes: sequence variations, secondary

- structural features, and phylogenetic implications. *Mol Phylogenet Evol* 25:87–100
- Bakke I, Johansen SD (2005) Molecular phylogenetics of gadidae and related gadiformes based on mitochondrial DNA sequences. *Mar Biotechnol* 7:61–69
- Boore JL (1999) Animal mitochondrial genomes. *Nucleic Acids Res* 27:1767–1780
- Carr SM, Kivlichan DS, Pepin P, Crutcher DC (1999) Molecular systematic of gadid fishes: implications for the biogeographic origins off Pacific species. *Can J Zool* 77:19–26
- Cohen DM, Inada T, Iwamoto T, Scialabba N (1990) Gadiform fishes of the world (order Gadiformes): an annotated and illustrated catalogue of cods, hakes, grenadiers and other gadiform fishes known to date. *FAO Species Catalogue* 10:1–442
- Coulson MW, Marshall HD, Pepin P, Carr SM (2006) Mitochondrial genomics of gadine fishes: implications for taxonomy and biogeographic origins from whole-genome data sets. *Genome* 49:1115–1130
- Doiron S, Bernatchez L, Blier PU (2002) A comparative mitogenomic analysis of the potential adaptive value of Arctic charr mtDNA introgression in brook charr populations (*Salvelinus fontinalis* Mitchell). *Mol Biol Evol* 19:1902–1909
- Falkenberg M, Larsson NG, Gustafsson CM (2007) DNA replication and transcription in mammalian mitochondria. *Annu Rev Biochem* 76:679–699
- Foran DR, Hixson JE, Brown WM (1988) Comparisons of ape and human sequences that regulate mitochondrial DNA transcription and D-loop DNA synthesis. *Nucleic Acids Res* 16:5841–5861
- Inoue JG, Miya M, Tsukamoto K, Nishida M (2001) Complete mitochondrial DNA sequence of Conger myriaster (Teleostei: Anguilliformes): novel gene order for vertebrate mitochondrial genomes and the phylogenetic implications for Anguilliform families. *J Mol Evol* 52:311–320
- Inoue JG, Miya M, Tsukamoto K, Nishida M (2003) Basal actinopterygian relationships: a mitogenomic perspective on the phylogeny of the “ancient fish”. *Mol Phylogenet Evol* 26:110–120
- Ishiguro NB, Miya M, Nishida M (2003) Basal euteleostean relationships: a mitogenomic perspective on the phylogenetic reality of the “Protacanthopterygii”. *Mol Phylogenet Evol* 27:476–488
- Johansen S, Bakke I (1996) The complete mitochondrial DNA sequence of Atlantic cod (*Gadus morhua*): relevance to taxonomic studies among codfishes. *Mol Mar Biol Biotechnol* 5:203–214
- Johansen S, Guddal PH, Johansen T (1990) Organization of the mitochondrial genome of Atlantic cod, *Gadus morhus*. *Nucleic Acids Res* 18:411–419
- Kumar S, Tamura K, Nei M (2004) Integrated software for molecular evolutionary genetics analysis and sequence alignment. *Brief Bioinform* 5:150–163
- Mabuchi K, Miya M, Satoh TP, Westneat MW, Nishida M (2004) Gene rearrangements and evolution of tRNA pseudogenes in the mitochondrial genome of parrotfish (Teleostei: Perciformes: Scaridae). *J Mol Evol* 59:287–297
- Minegishi Y, Aoyama J, Inoue JG, Miya M, Nishida M, Tsukamoto K (2005) Molecular phylogeny and evolution of the freshwater eels genus *Anguilla* based on the whole mitochondrial genome sequences. *Mol Phylogenet Evol* 34:134–146
- Miya M, Kawaguchi A, Nishida M (2001) Mitogenomic exploration of higher teleostean phylogeny: a case study for moderate-scale evolutionary genomics with 38 newly determined complete mitochondrial DNA sequences. *Mol Biol Evol* 18:1993–2009
- Miya M, Nishida M (1999) Organization of the mitochondrial genome of a deep-sea fish, *Gonostoma gracile* (Teleostei: Stomiiformes): first example of transfer RNA gene rearrangements in bony fishes. *Mar Biotechnol* 1:416–426
- Miya M, Takeshima H, Endo H, Ishiguro NB, Inoue JG, Mukai T, Satoh TP, Yamaguchi M, Kawaguchi A, Mabuchi K, Shirai SM, Nishida M (2003) Major patterns of higher teleostean phylogenies: a new perspective based on 100 complete mitochondrial DNA sequences. *Mol Phylogenet Evol* 26:121–38
- Mueller RL, Boore JL (2005) Molecular mechanisms of extensive mitochondrial gene rearrangement in plethodontid salamanders. *Mol Biol Evol* 22:2104–2112
- Møller PR, Jordan AD, Gravlund P, Steffensen JF (2002) Phylogenetic position of the cryopelagic codfish genus *Arctogadus* Drjagin, 1932, based on partial mitochondrial cytochrome b sequences. *Polar Biol* 25:342–349
- Ponce M, Infante C, Jimenez-Cantizano RM, Perez L, Manchado M (2008) Complete mitochondrial genome of the blackspot seabream, *Pagellus bogaraveo* (Perciformes: Sparidae), with high levels of length heteroplasmy in the WANCY region. *Gene* 409:44–52
- Posada D, Crandall KA (1998) Modeltest: testing the model of DNA substitution. *Bioinformatics* 14:817–881
- Roques S, Fox CJ, Villasana MI, Rico C (2006) The complete mitochondrial genome of the whiting, *Merlangius merlangius*, and the haddock, *Melanogrammus aeglefinus*: a detailed genomic comparison among closely related species of the Gadidae family. *Gene* 383:12–23
- Satoh TP, Miya M, Endo H, Nishida M (2006) Round and pointed-head grenadier fishes (Actinopterygii: Gadiformes) represent a single sister group: evidence from complete mitochondrial genome sequences. *Mol Phylogenet Evol* 40:129–138
- Savolainen P, Arvestad L, Lundeberg J (2000) mtDNA tandem repeats in domestic dogs and wolves: mutation mechanism studied by analysis of the sequence of imperfect repeats. *Mol Biol Evol* 17:474–488
- Sbisa E, Tanzariello F, Reyes A, Pesole G, Saccone C (1997) Mammalian mitochondrial D-loop region structural analysis: identification of new conserved sequences and their functional and evolutionary implications. *Gene* 205:125–140
- Shields GF, Gust JR (1995) Lack of geographic structure in mitochondrial DNA sequences of Bering Sea walleye pollock, *Theragra chalcogramma*. *Mol Mar Biol Biotechnol* 4:69–82
- Sigurgislason H, Arnason E (2003) Extent of mitochondrial DNA sequence variation in Atlantic cod from the Faroe Island: a resolution of gene genealogy. *Heredity* 91:557–564
- Smetacek V, Nicol S (2005) Polar ocean ecosystems in a changing world. *Nature* 437:362–368
- Swofford DL (2002) PAUP*. Phylogenetic analysis using parsimony (and other methods). Version 4. Sinauer and Associates, Sunderland
- Tamura K, Dudley J, Nei M, Kumar S (2007) MEGA4: molecular evolutionary genetics analysis (MEGA) software version 4.0. *Mol Biol Evol* 24:1596–1599
- Teletchea F, Laudet V, Hanni C (2006) Phylogeny of the Gadidae (sensu Svetovidov, 1948) based on their morphology and two mitochondrial genes. *Mol Phylogenet Evol* 38:189–199
- Thompson JD, Gibson TJ, Plewniak F, Jeanmougin F, Higgins DG (1997) The ClustalX windows interface: flexible strategies for multiple sequence alignment aided by quality analysis tools. *Nucleic Acids Res* 24:4876–4882
- Ursvik A, Breines R, Christiansen JS, Fevolden S-E, Coucheron DH, Johansen SD (2007) A mitogenomic approach to the taxonomy of pollocks: *Theragra chalcogramma* and *T. finnmarkica* represent one single species. *BMC Evol Biol* 7:87
- Yanagimoto T, Kitamura T, Kobayashi T (2004) Complete nucleotide sequence and variation of mitochondrial DNA from 10 individuals of walleye Pollock, *Theragra chalcogramma*. *Fish Sci* 70:885–895